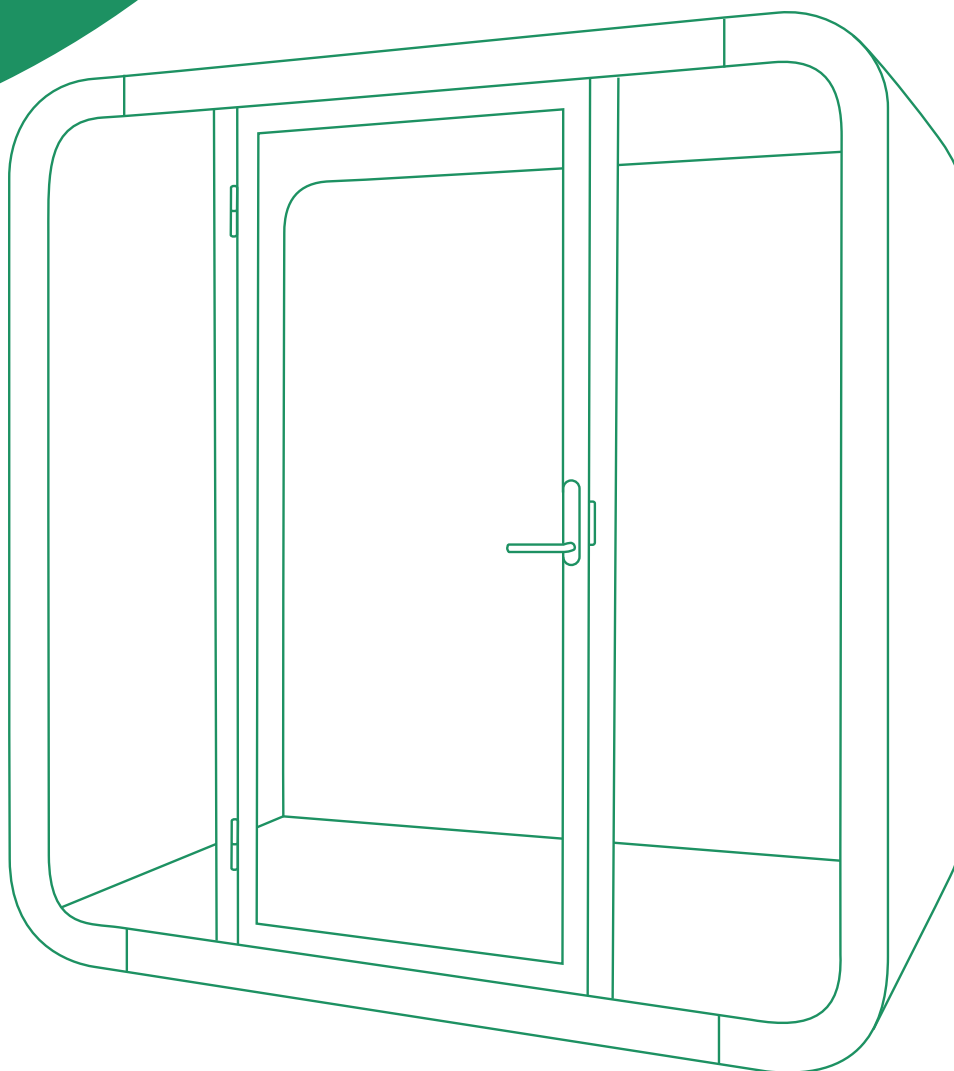


framery

SERIOUS ABOUT HAPPINESS



Framery Q Monitor Arm

Installation instructions

English
Version 1.0

Tampere, Finland 7.5.2021

Contents

- 1 Monitor Arm Meeting Maggie..... 5**
 - 1.1 Measure the center glass.....5
 - 1.2 Install the display bracket.....5
 - 1.3 Install the monitor arm to the display bracket.....7
 - 1.4 Install the display to the monitor arm.....9
 - 1.5 Connect the display power cord to the power unit.....10

- 2 Monitor Arm Working With PAL.....13**
 - 2.1 Measure the center glass.....13
 - 2.2 Install the display bracket.....13
 - 2.3 Install the monitor arm to the display bracket.....15
 - 2.4 Install the display to the monitor arm.....17
 - 2.5 Connect the display power cord to the power unit.....18

1 Monitor Arm Meeting Maggie

1.1 Measure the center glass

- ⚠ **Note:** Make sure that the center glass is installed before installing the display bracket.

Measure the center glass to make sure that the glass is installed correctly.

- ⚠ **Note:** The measurement accuracy is $\pm 1\text{mm}/0.04''$

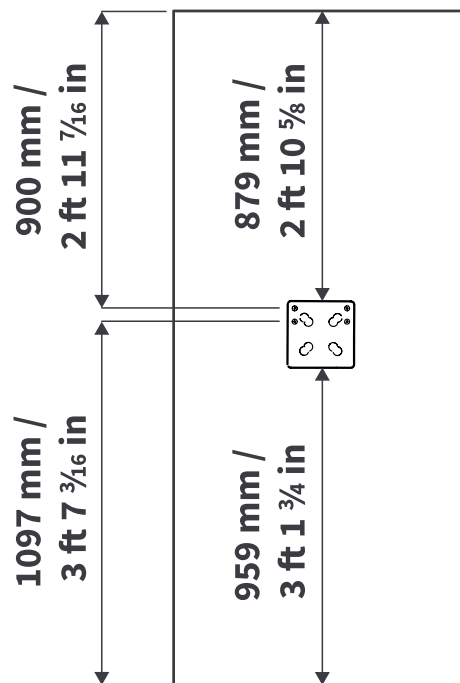


Figure 1: Q Meeting Maggie display bracket measurements

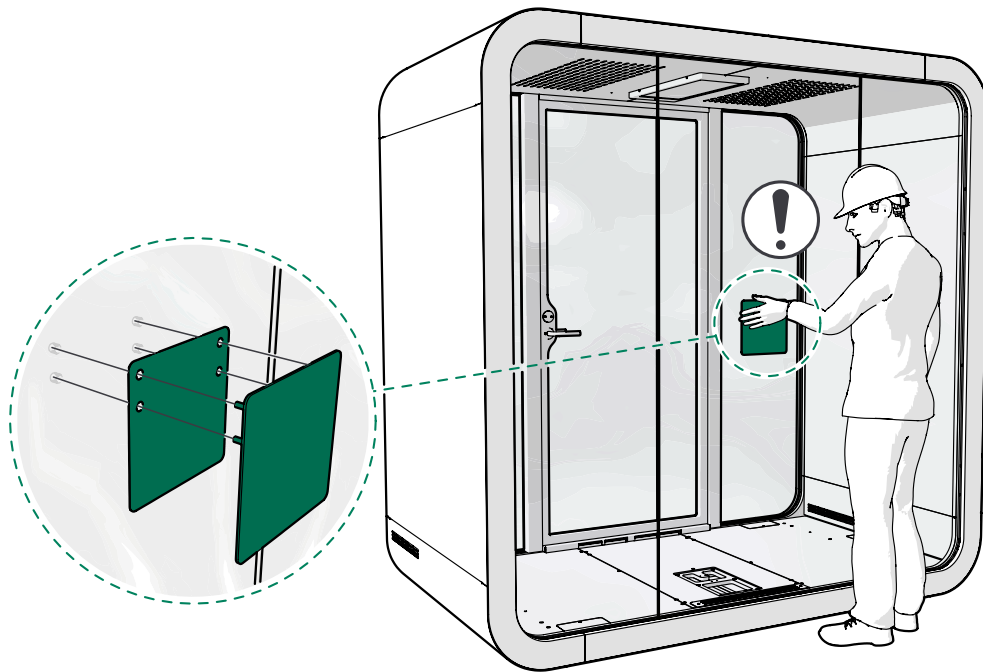
1.2 Install the display bracket

- ⚠ **Note:** Installation requires 2 people.

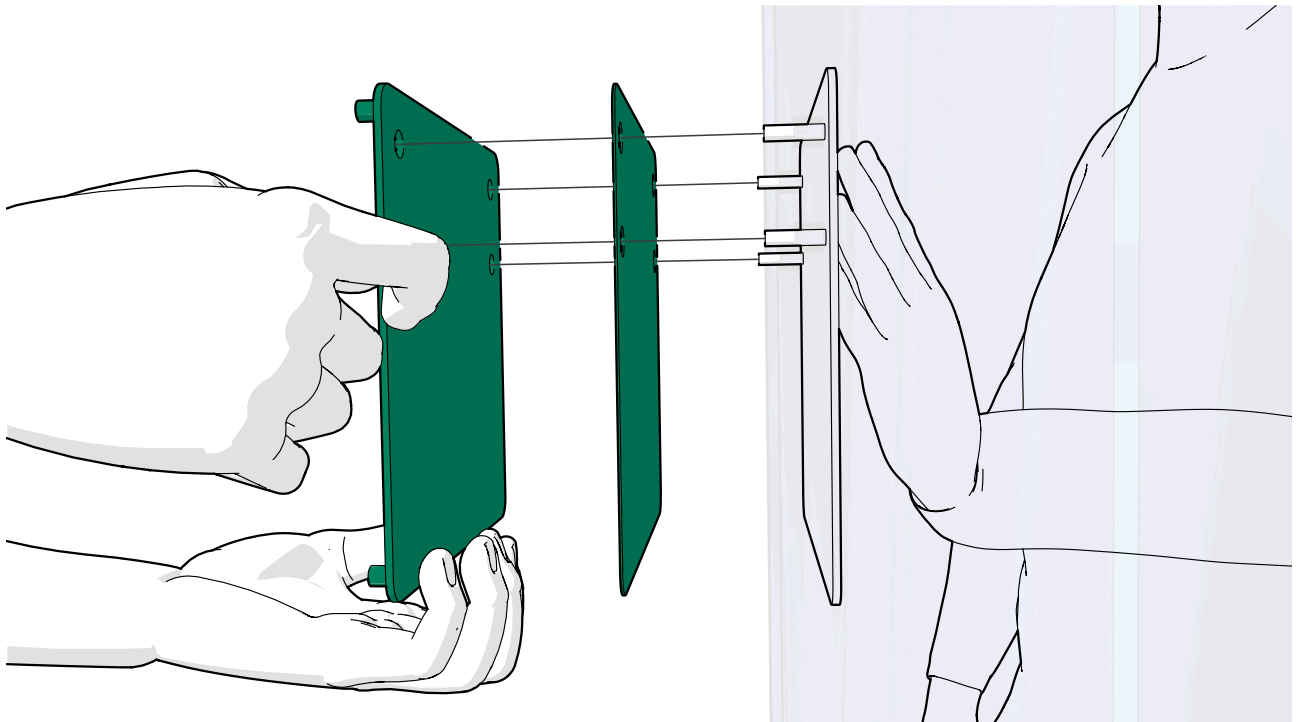
1. From outside the booth, install the back plate of the display bracket and one rubber plate to the installation holes in the center glass.



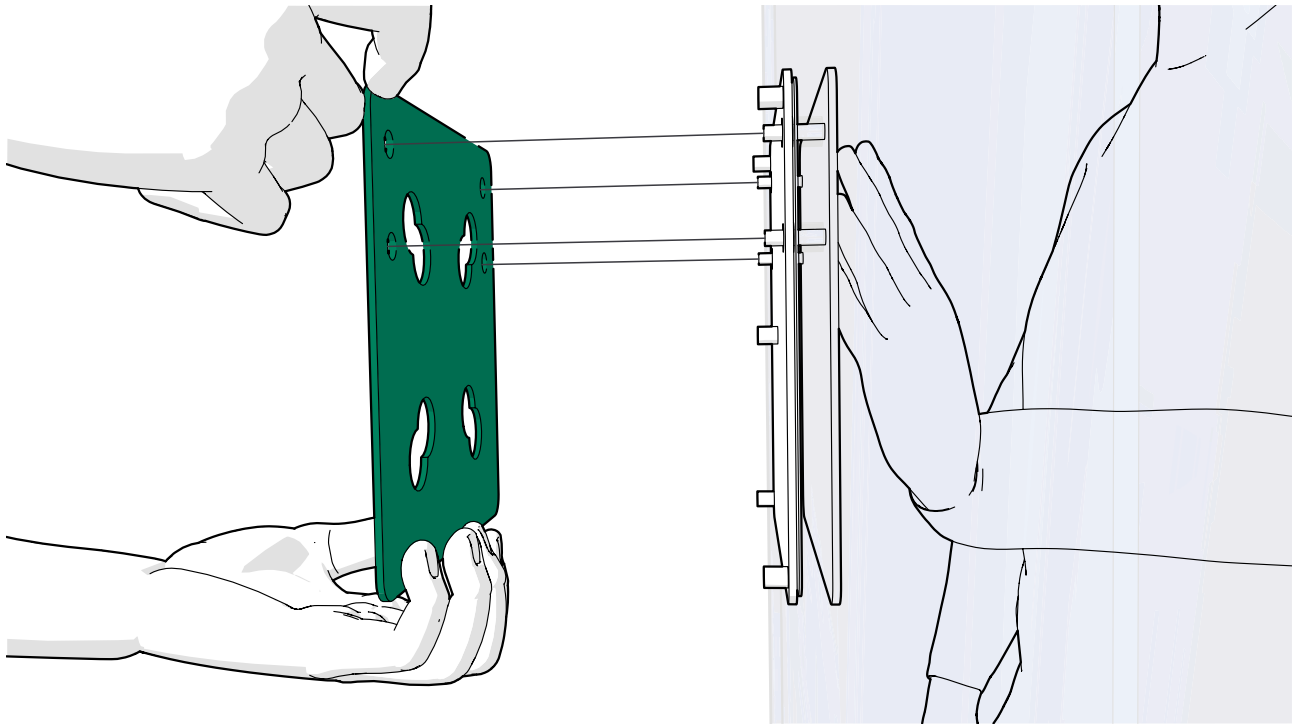
Note: Make sure that the glass and the display bracket are installed the correct way round for the interior intended to be installed.



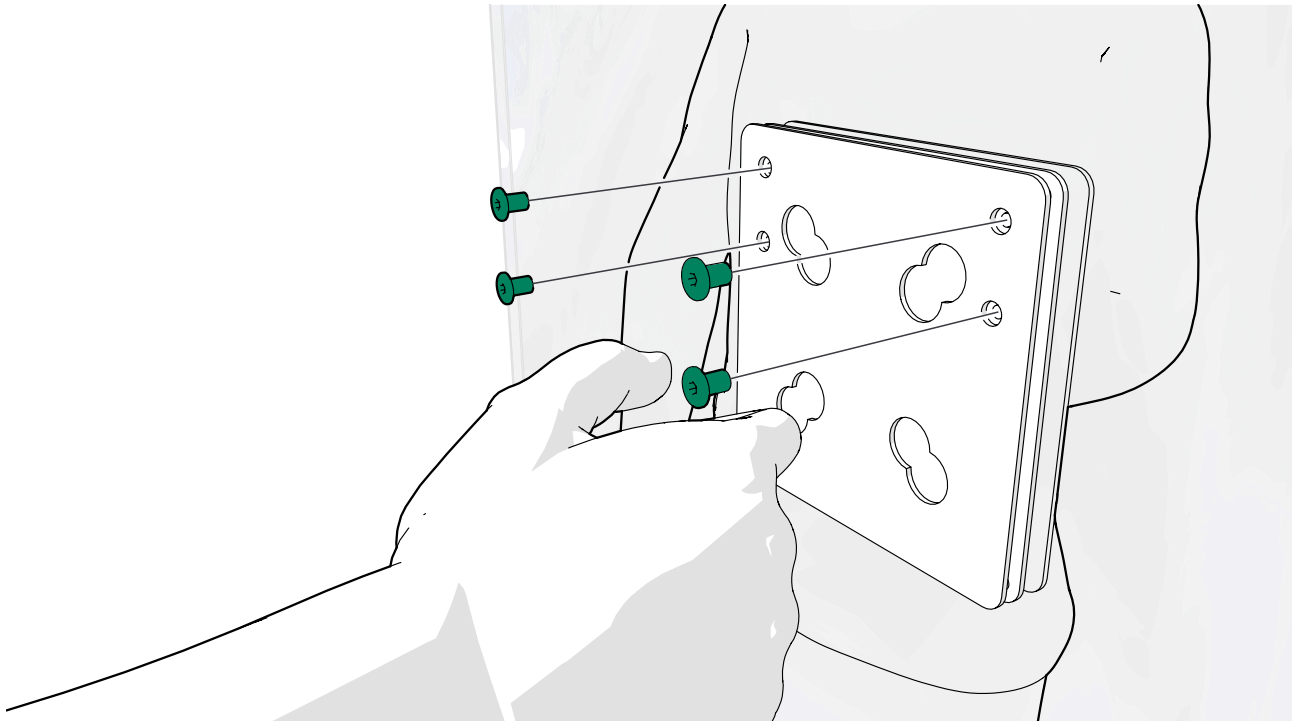
2. Support the parts on the outside of the center glass and, from the inside of the pod, install the remaining rubber plate and middle plate onto the threaded pegs of the back plate.



3. From inside the booth, install the front plate onto the threaded pegs of the back plate.



4. Secure the assembly with M6 socket cap nuts (4 pcs).

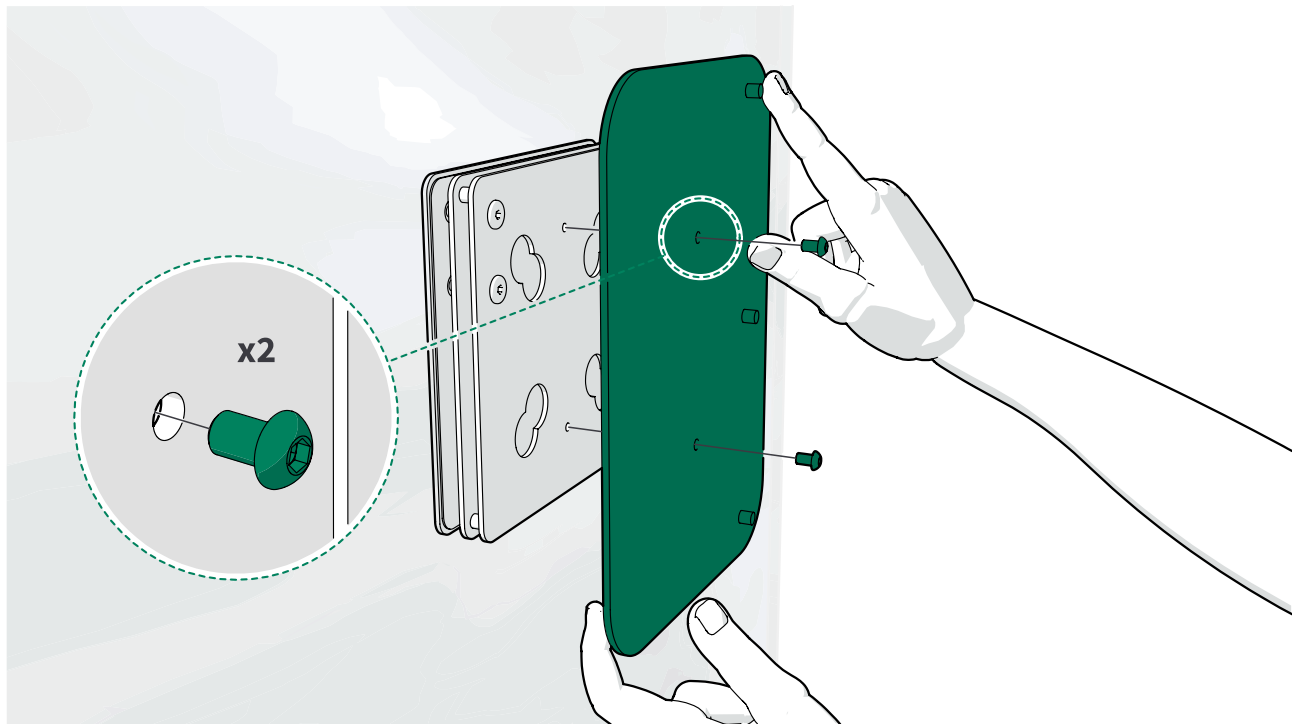


1.3 Install the monitor arm to the display bracket

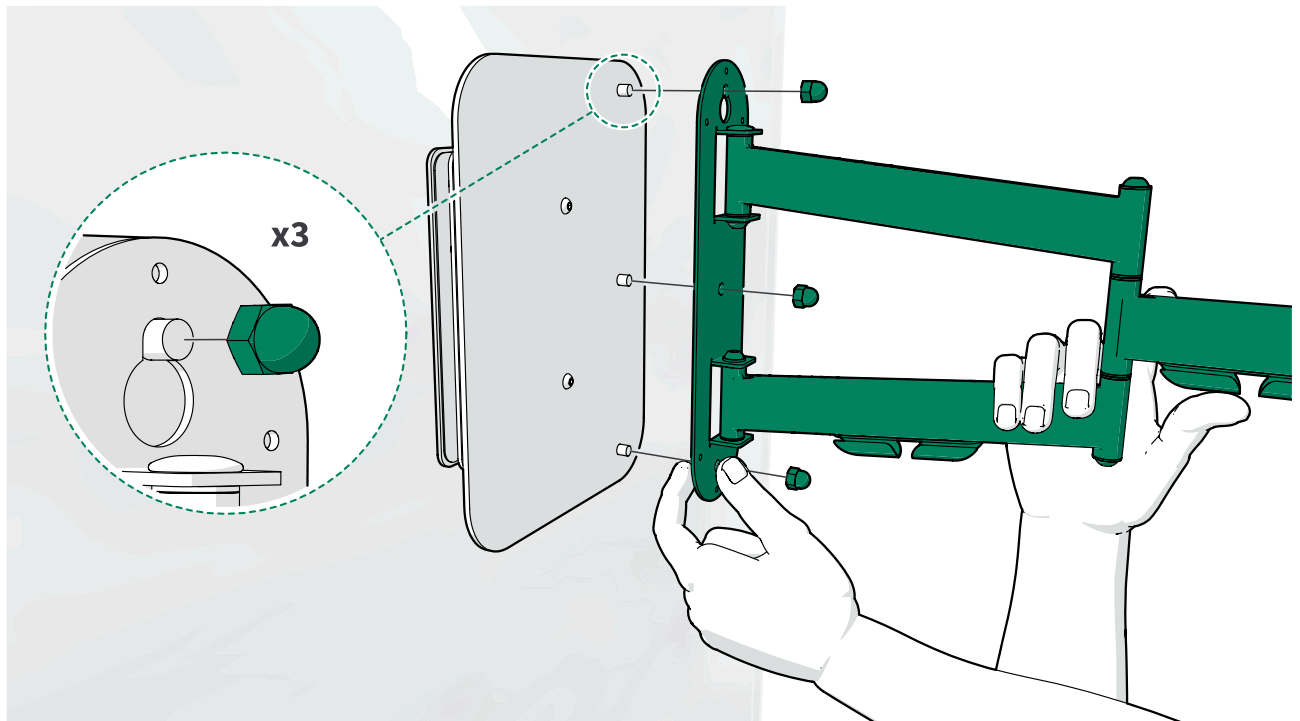
1. Insert M6x10 screws through the upper and lower holes in the monitor arm attachment plate. Install the plate to the upper and lower parts of the display bracket.



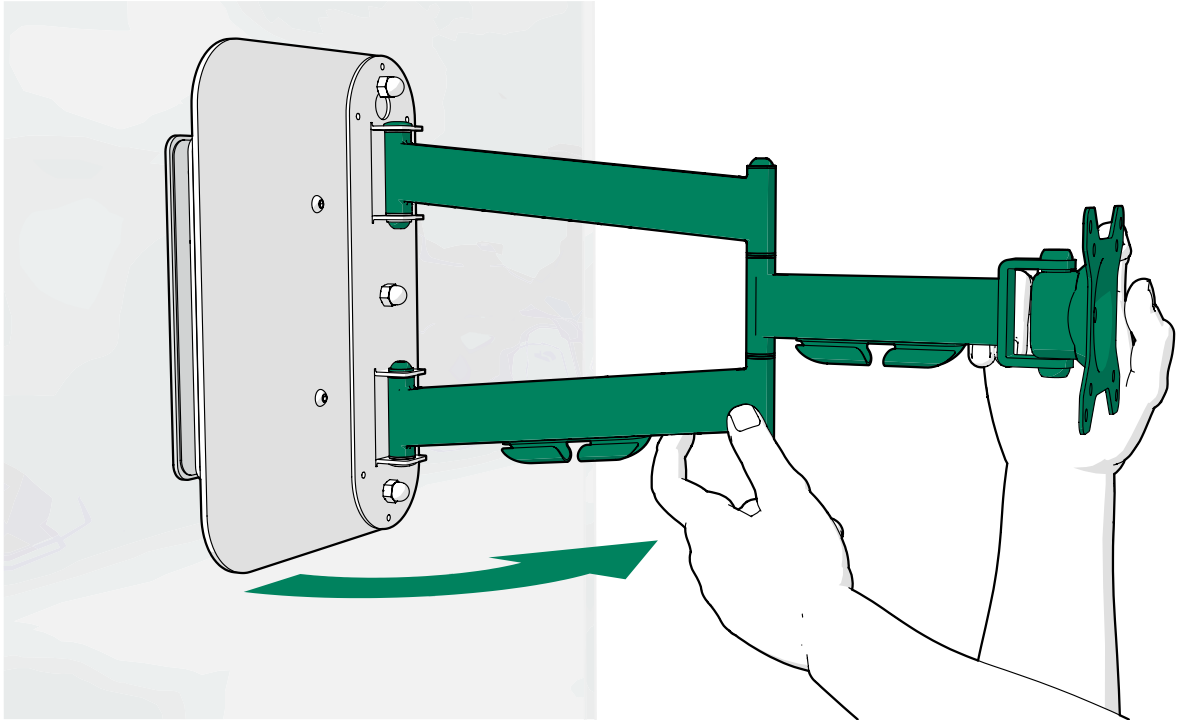
Note: Make sure that the threaded studs (3 pcs) are on the right-hand side.



2. Install the monitor arm to the attachment plate with M8 cap nuts (3 pcs).



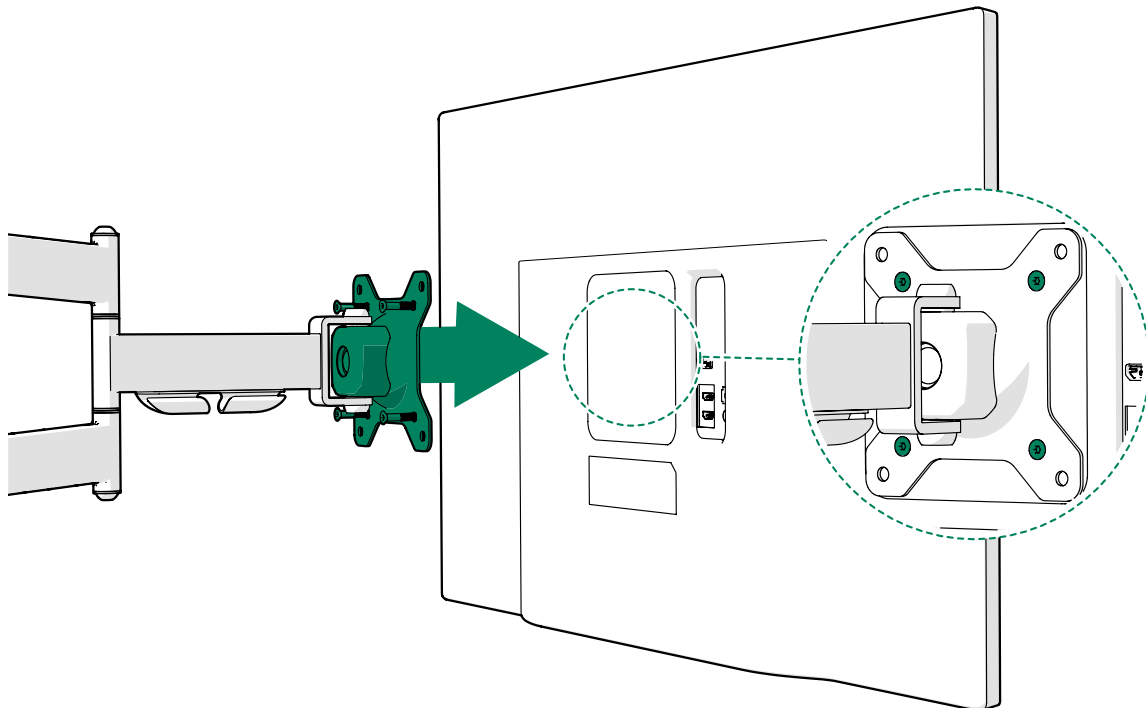
3. Extend the monitor arm.

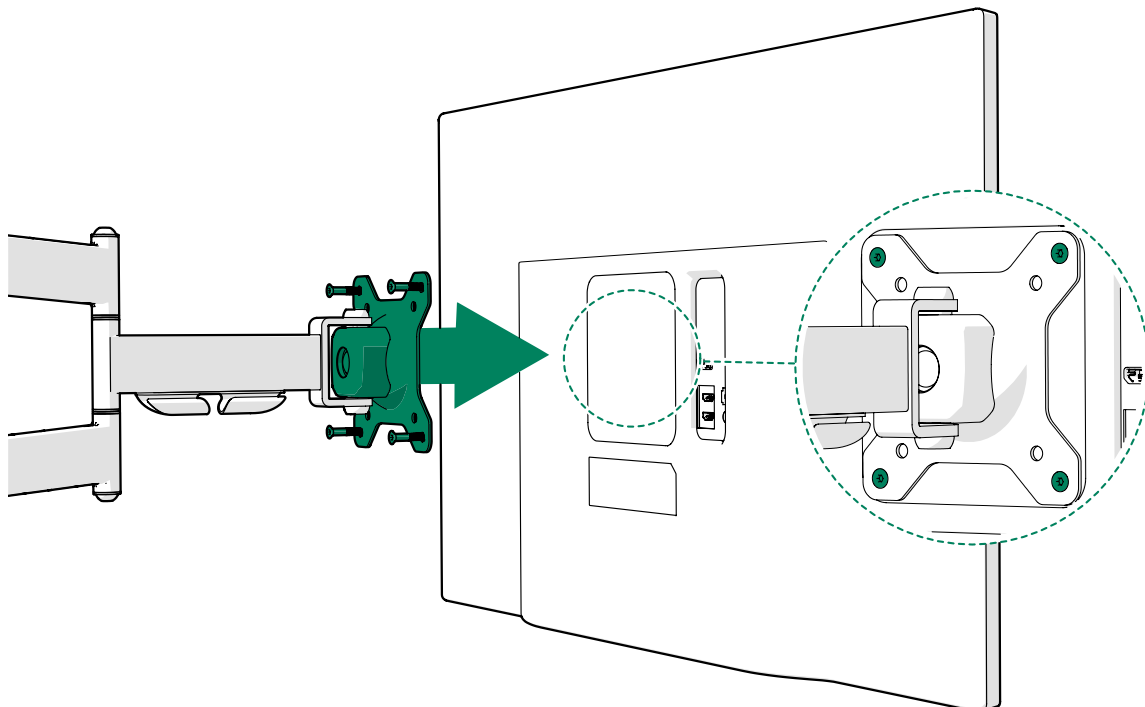


1.4 Install the display to the monitor arm

The maximum load of the monitor arm is 15kg and maximum screen size of the display is 27".

Install the monitor arm to the VESA 75 or 100 mounting holes at the back of the customer supplied display with the screws.

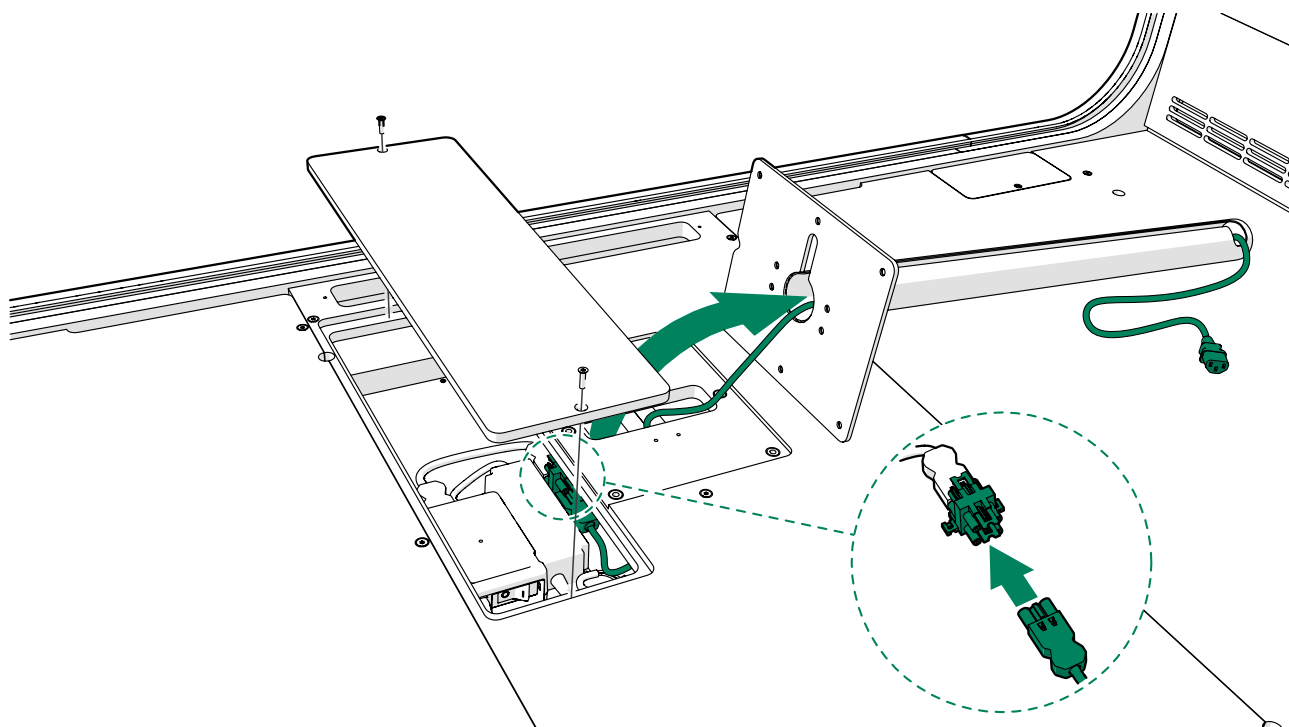




1.5 Connect the display power cord to the power unit

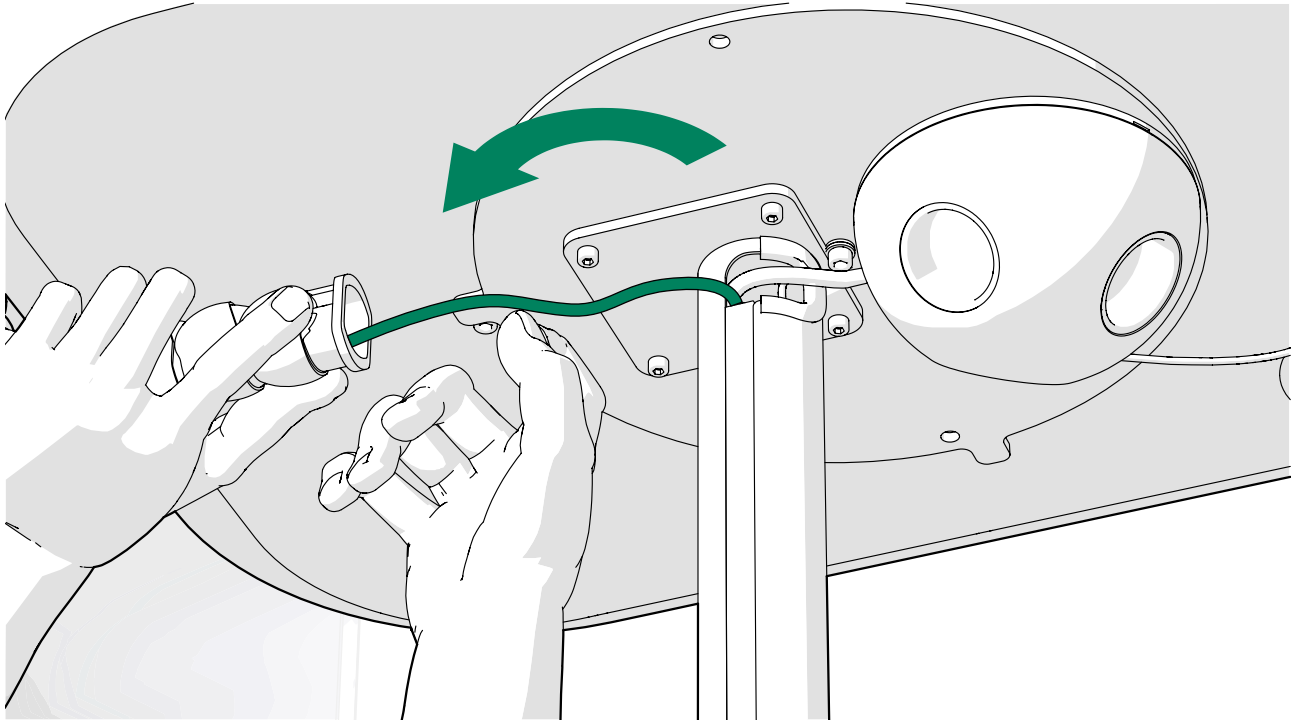
The display bracket delivery contains a GST-C13 cord for the customer supplied display and a splitter. The splitter is installed to the GST cord coming from the power unit. See the pod installation instructions for more information about installing the other electrical components.

1. Connect the GST end of the display cord to the splitter and guide it into the table leg.

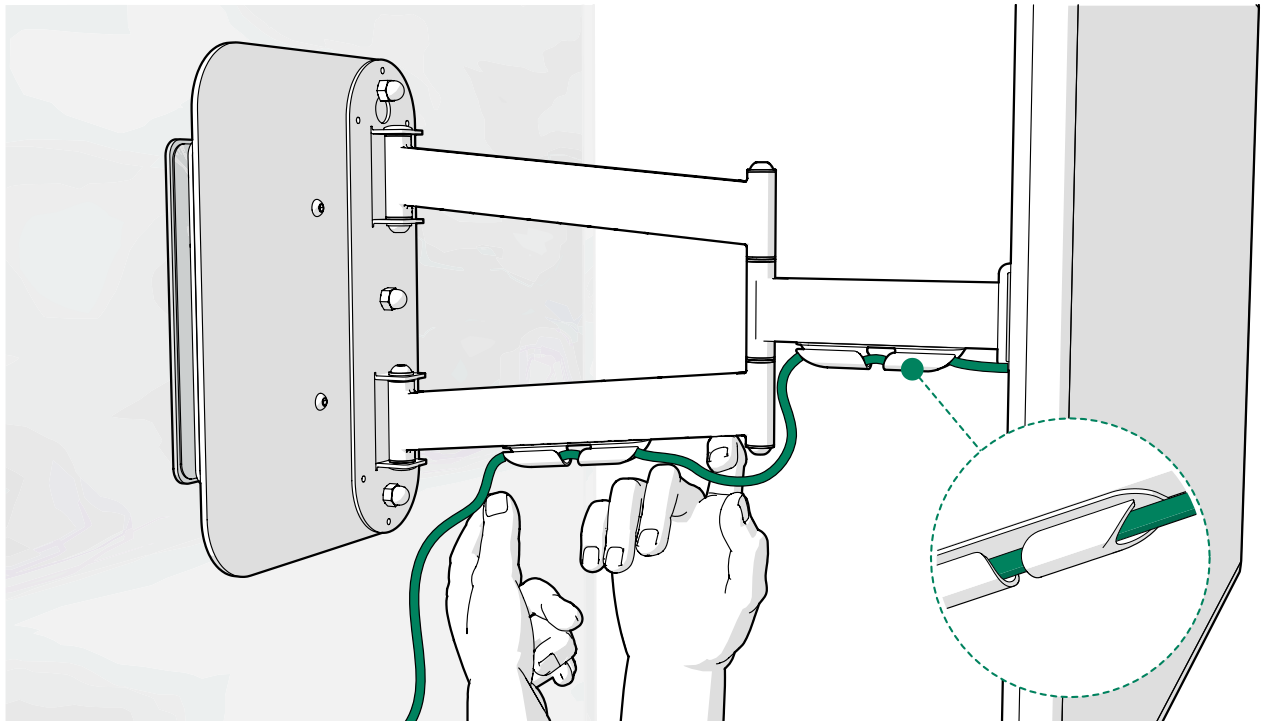


2. Install the table according to the pod installation instructions.

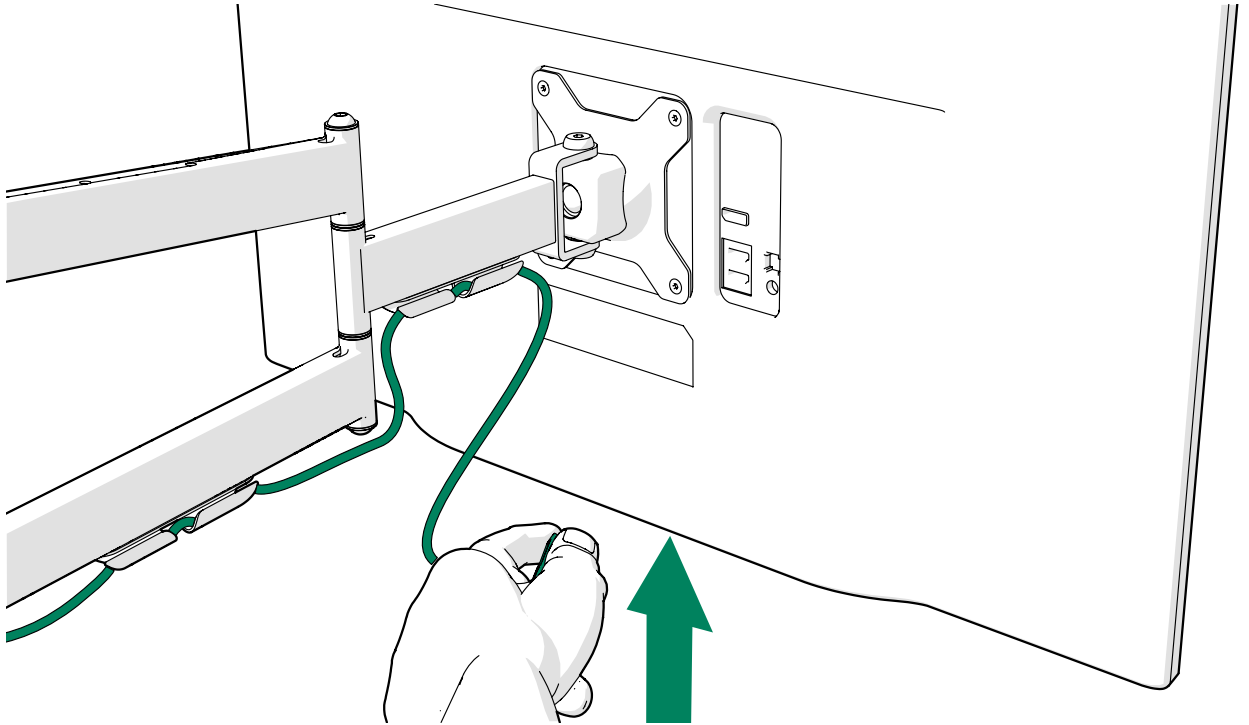
3. Guide the cord through a cable wrap. Install the cable wrap to the bottom of the table.



4. Guide the display power cord through the cord duct in the monitor arm.



5. Connect the GST cord to the display.



2 Monitor Arm Working With PAL

2.1 Measure the center glass

- ⚠ **Note:** Make sure that the center glass is installed before installing the display bracket.

Measure the center glass to make sure that the glass is installed correctly.

- ⚠ **Note:** The measurement accuracy is $\pm 1\text{mm}/0.04\text{'}$

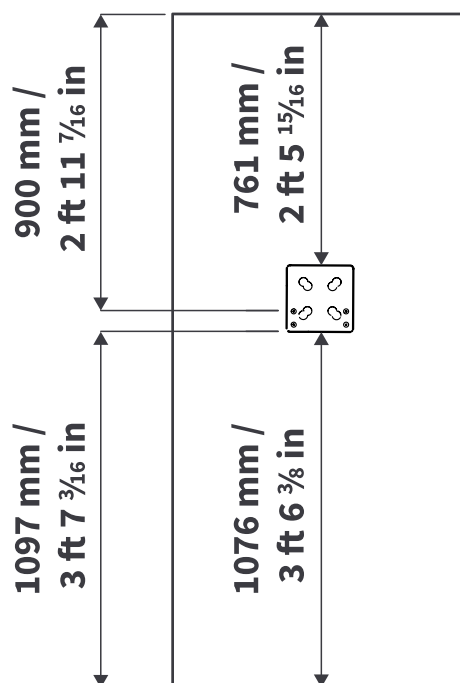


Figure 2: Q Working with PAL display bracket measurements

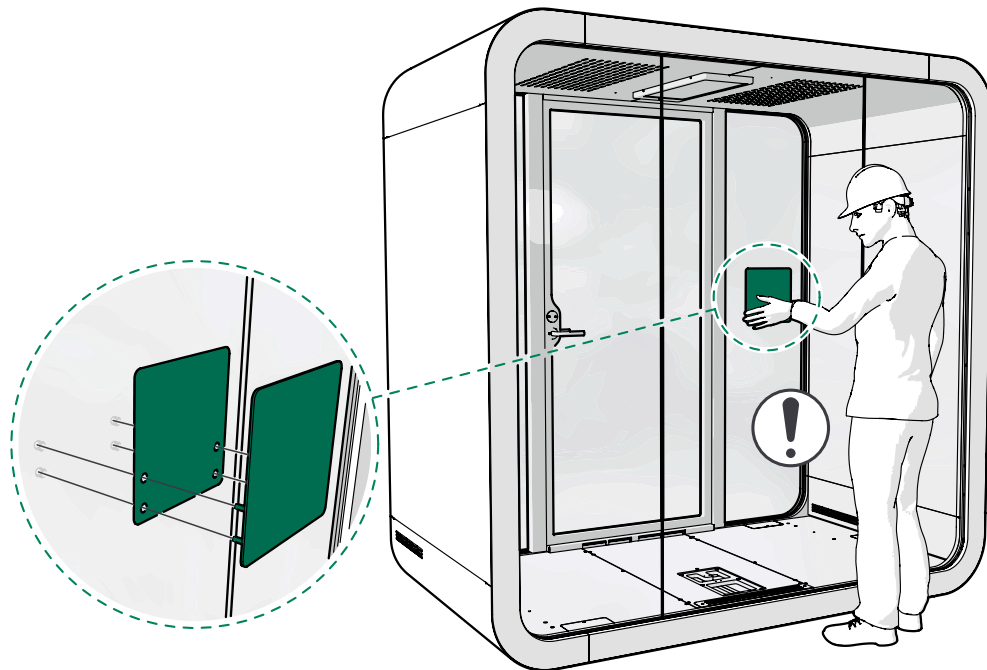
2.2 Install the display bracket

- ⚠ **Note:** Installation requires 2 people.

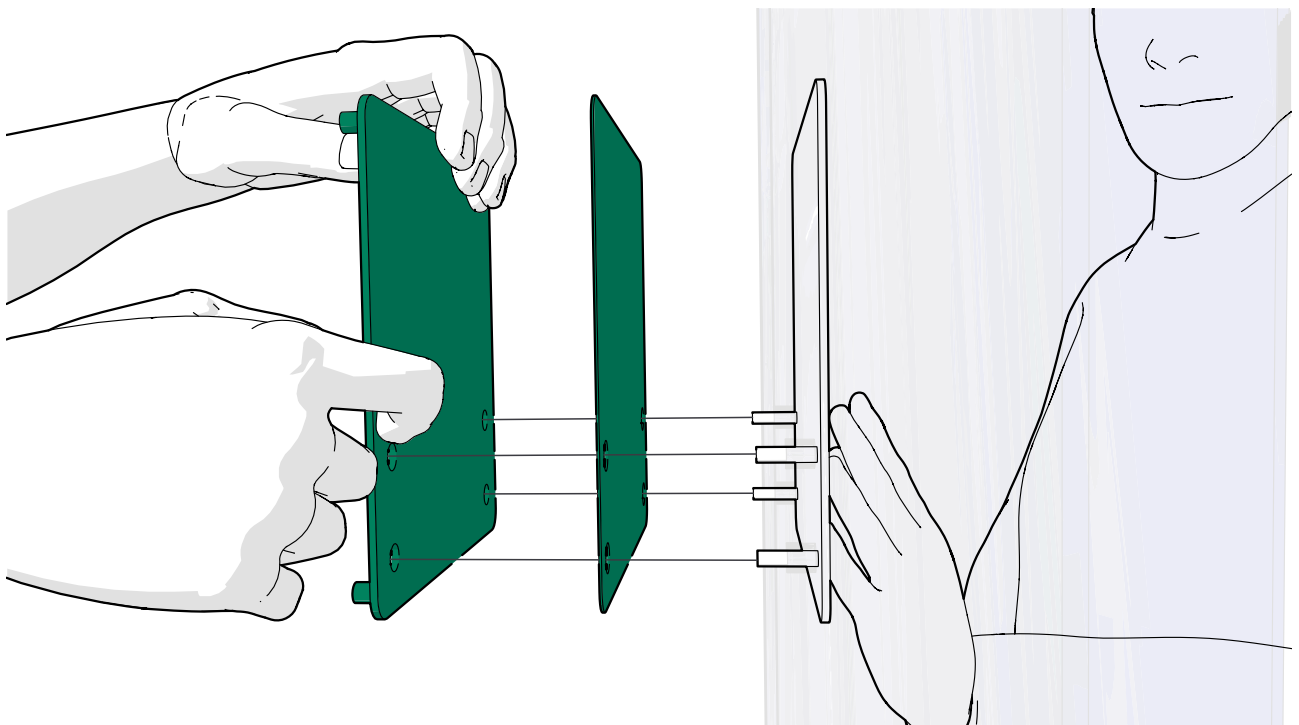
1. From outside the booth, install the back plate of the display bracket and one rubber plate to the installation holes in the center glass.



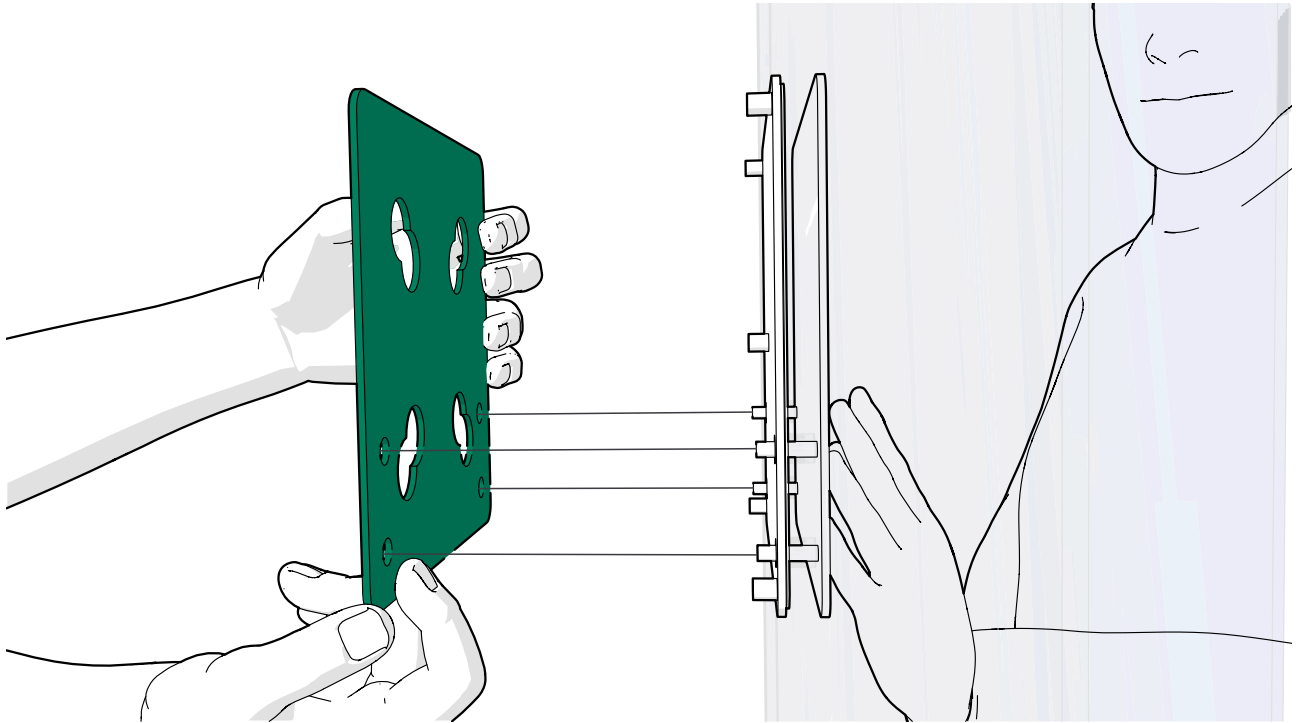
Note: Make sure that the glass and the display bracket are installed the correct way round for the interior intended to be installed.



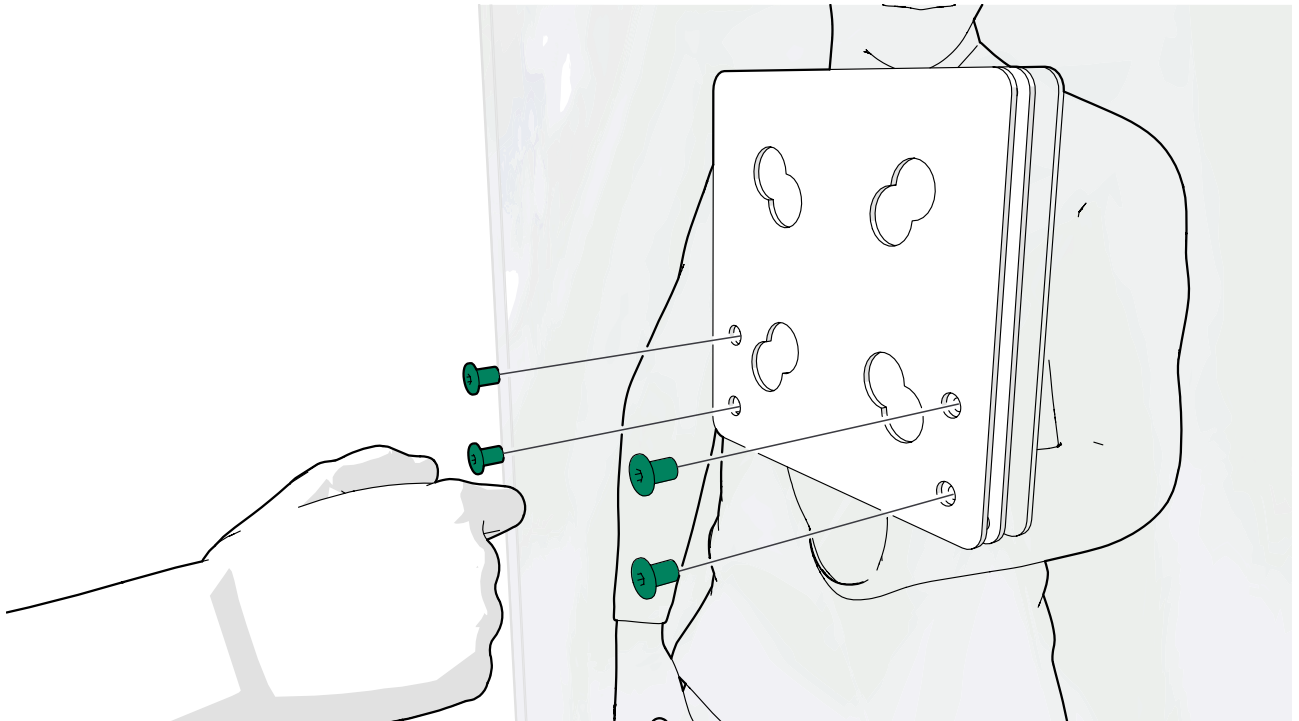
2. Support the parts on the outside of the center glass and, from the inside of the pod, install the remaining rubber plate and middle plate onto the threaded pegs of the back plate.



3. From inside the booth, install the front plate onto the threaded pegs of the back plate.



4. Secure the assembly with M6 socket cap nuts (4 pcs).

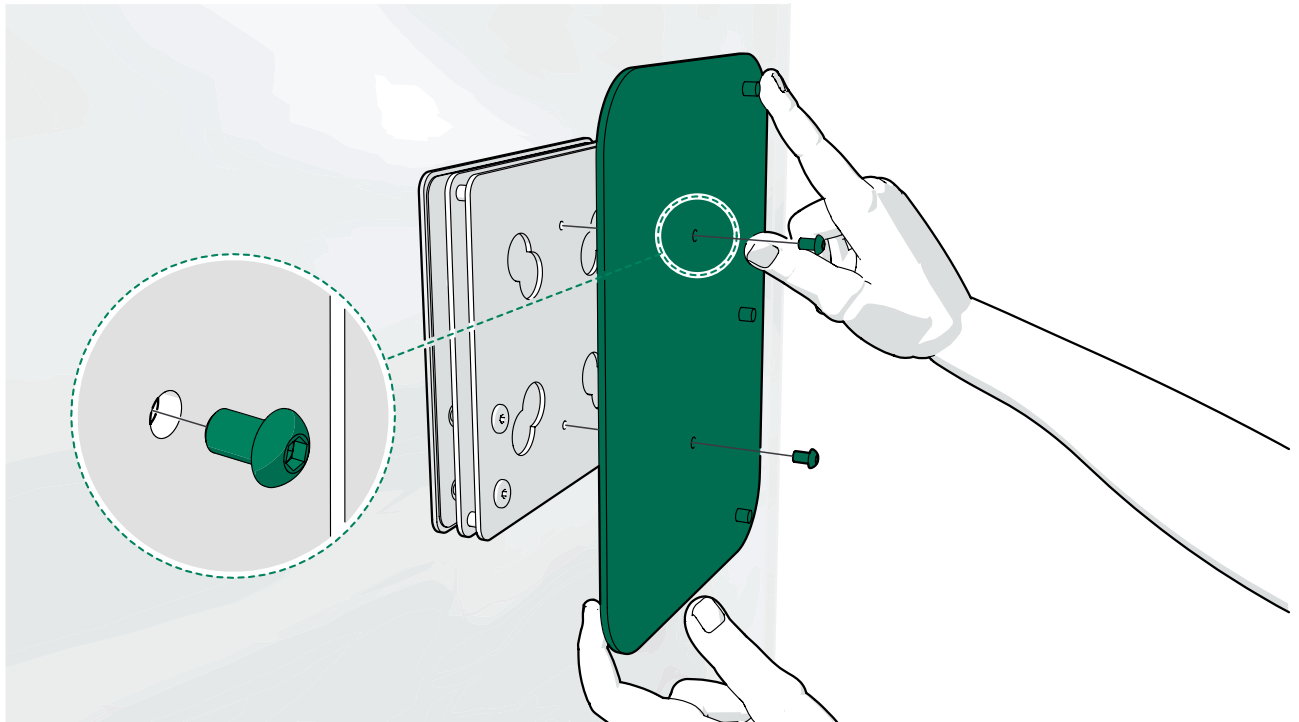


2.3 Install the monitor arm to the display bracket

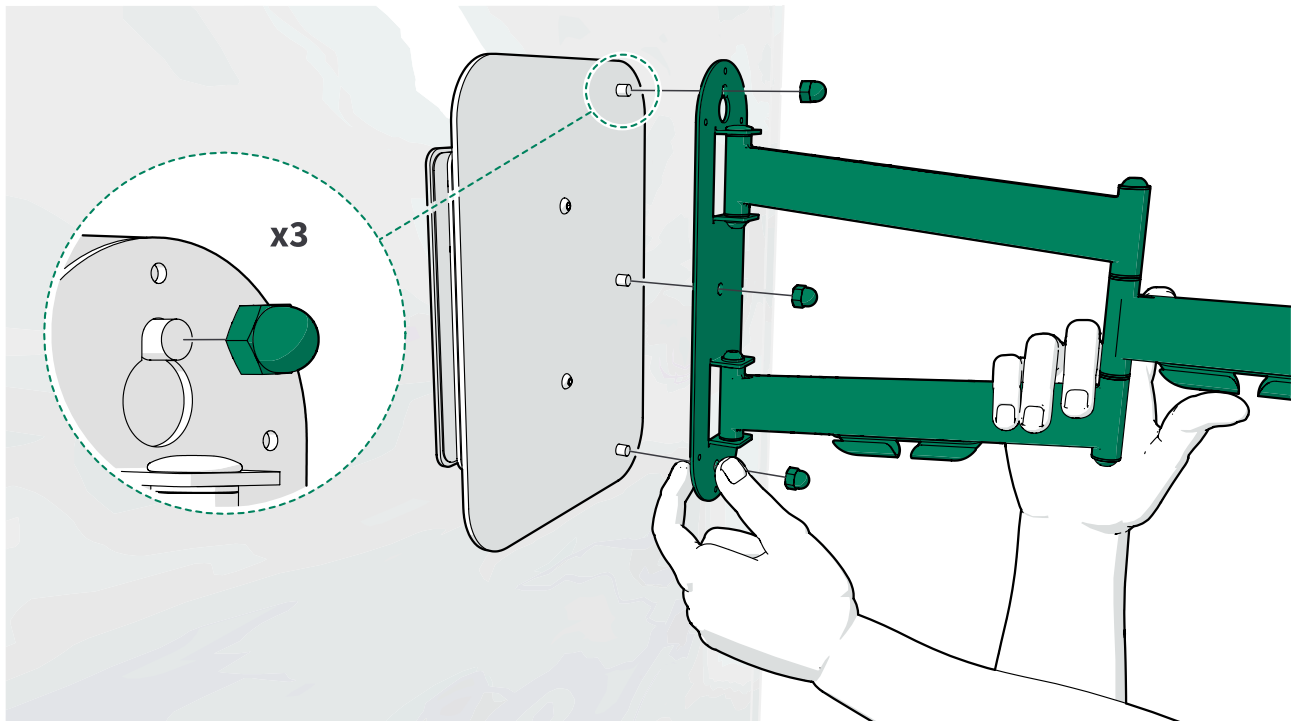
1. Insert M6x10 screws through the upper and lower holes in the monitor arm attachment plate. Install the plate to the upper and lower parts of the display bracket.



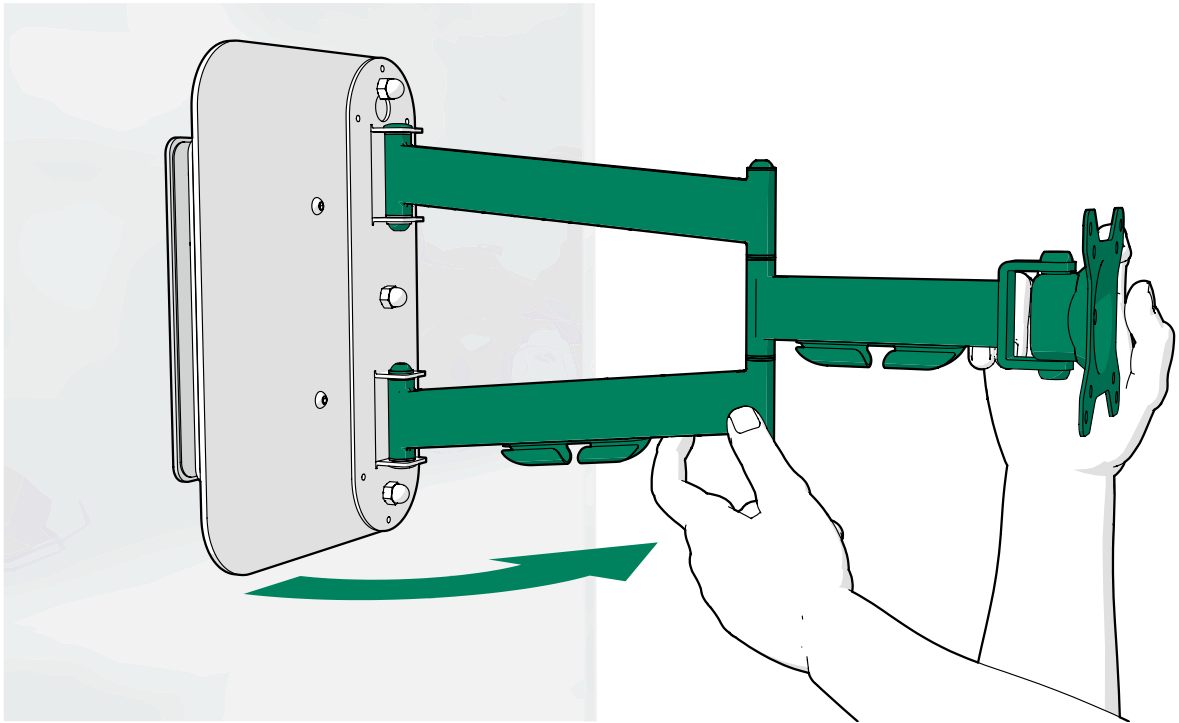
Note: Make sure that the threaded studs (3 pcs) are on the right-hand side.



2. Install the monitor arm to the attachment plate with M8 cap nuts (3 pcs).



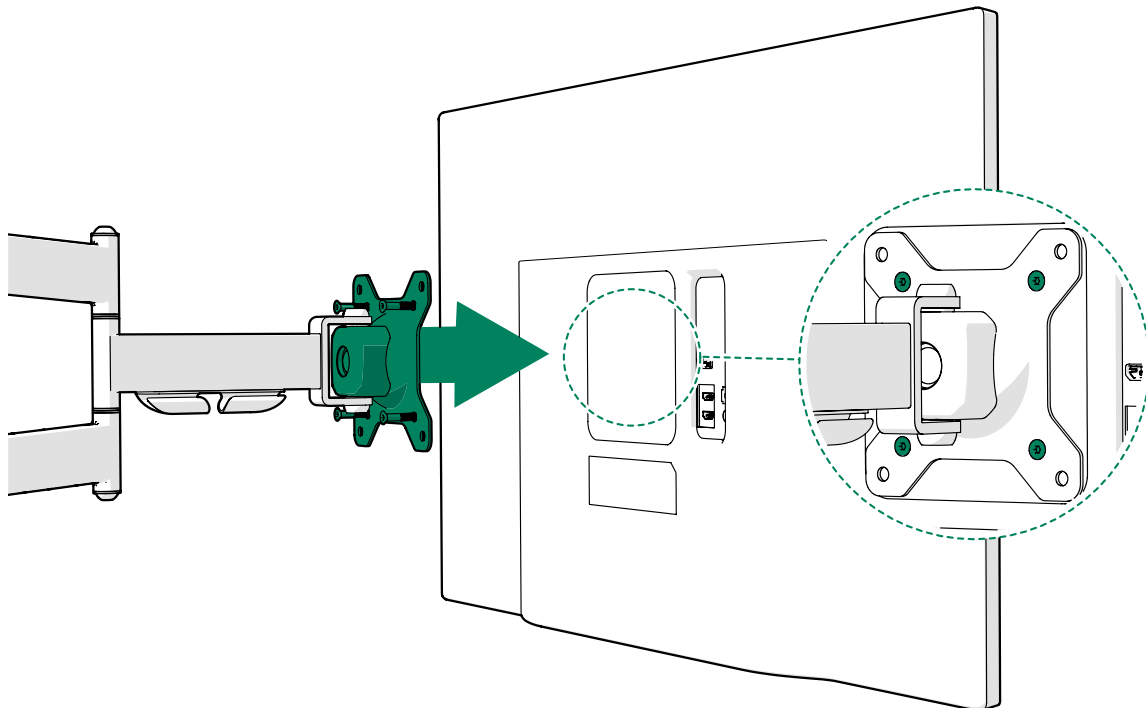
3. Extend the monitor arm.

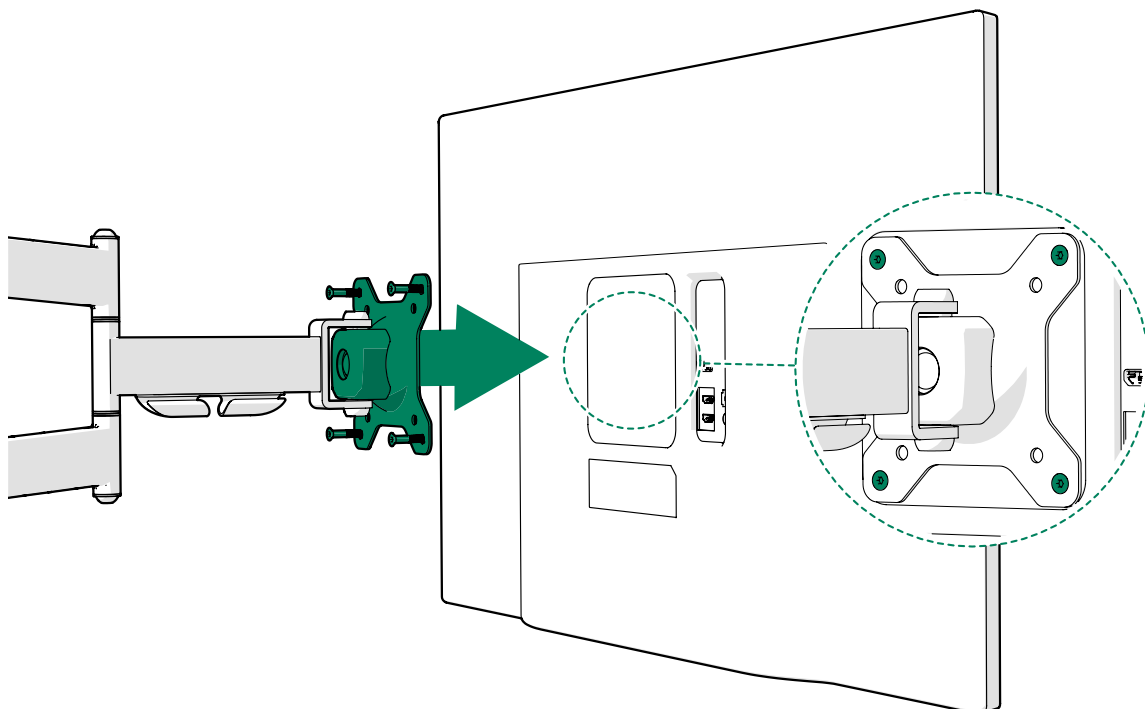


2.4 Install the display to the monitor arm

The maximum load of the monitor arm is 15kg and maximum screen size of the display is 27".

Install the monitor arm to the VESA 75 or 100 mounting holes at the back of the customer supplied display with the screws.

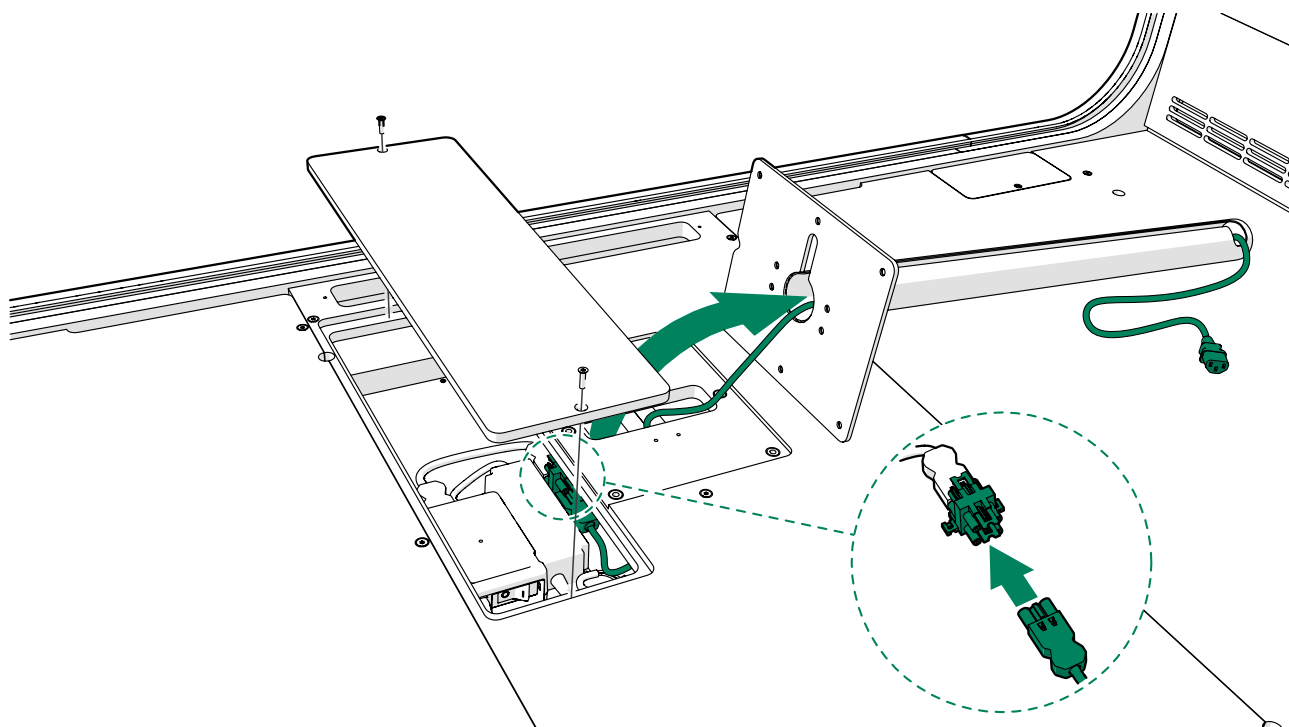




2.5 Connect the display power cord to the power unit

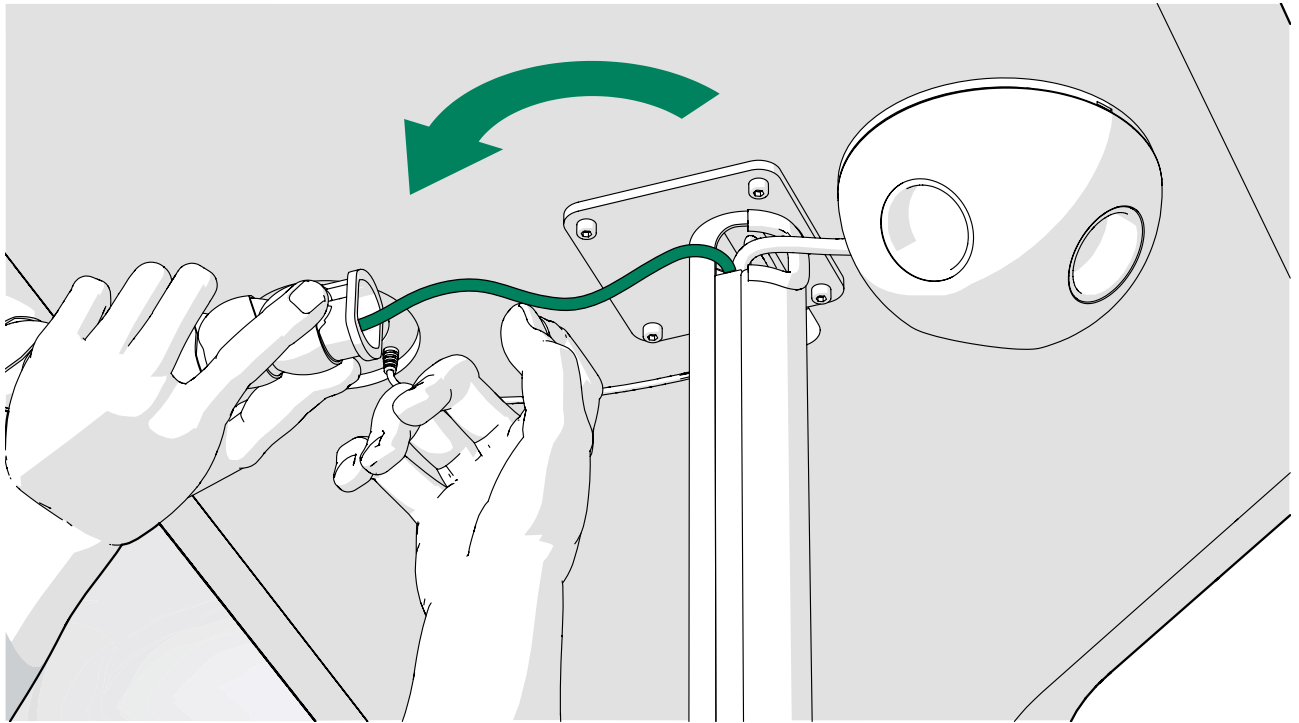
The display bracket delivery contains a GST-C13 cord for the customer supplied display and a splitter. The splitter is installed to the GST cord coming from the power unit. See the pod installation instructions for more information about installing the other electrical components.

1. Connect the GST end of the display cord to the splitter and guide it into the table leg.

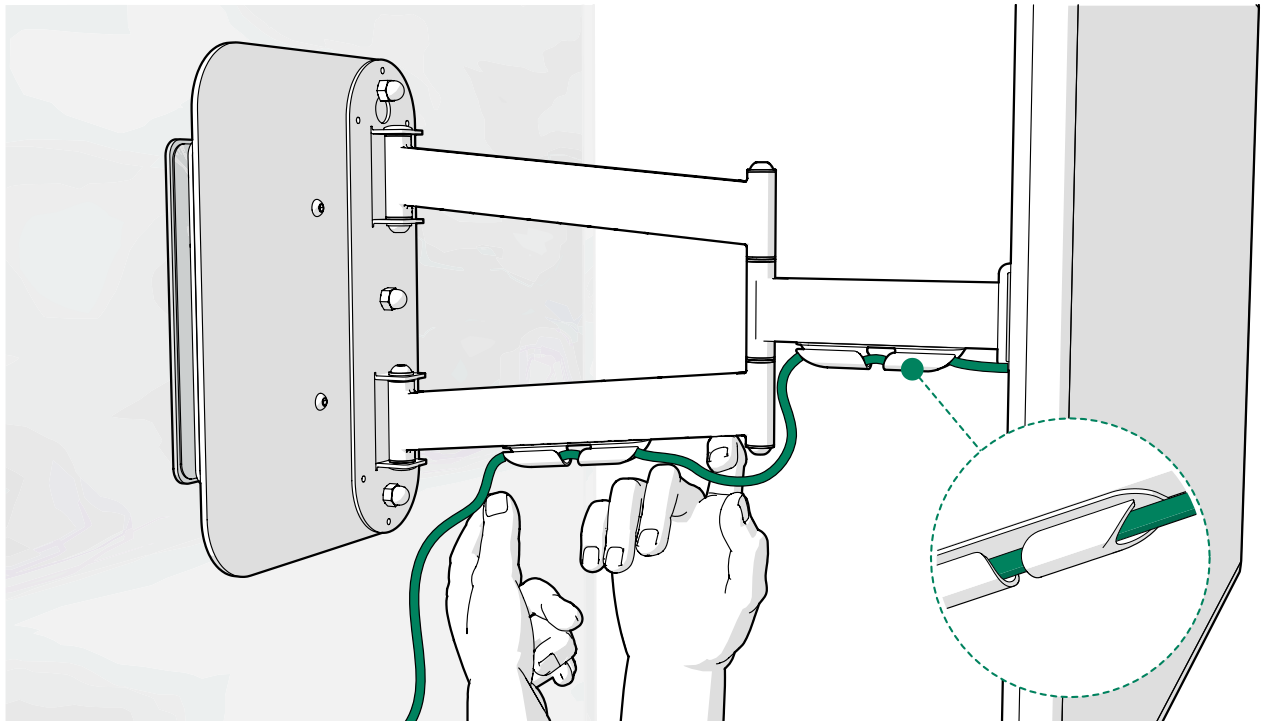


2. Install the table according to the pod installation instructions.

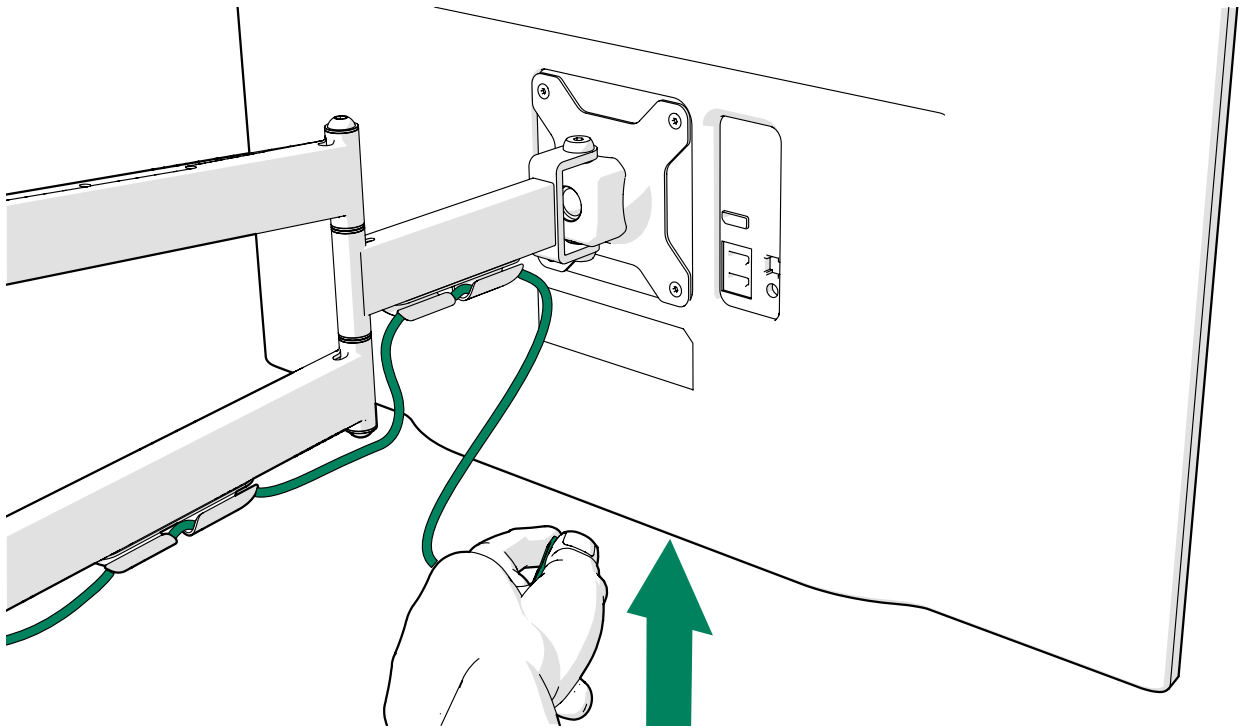
3. Guide the cord through a cable wrap. Install the cable wrap to the bottom of the table.



4. Guide the display power cord through the cord duct in the monitor arm.



5. Connect the GST cord to the display.



framery

Framery Q Monitor Arm

Installation instructions

Patamäenkatu 7

33900 Tampere

FINLAND

VAT: FI 23527139