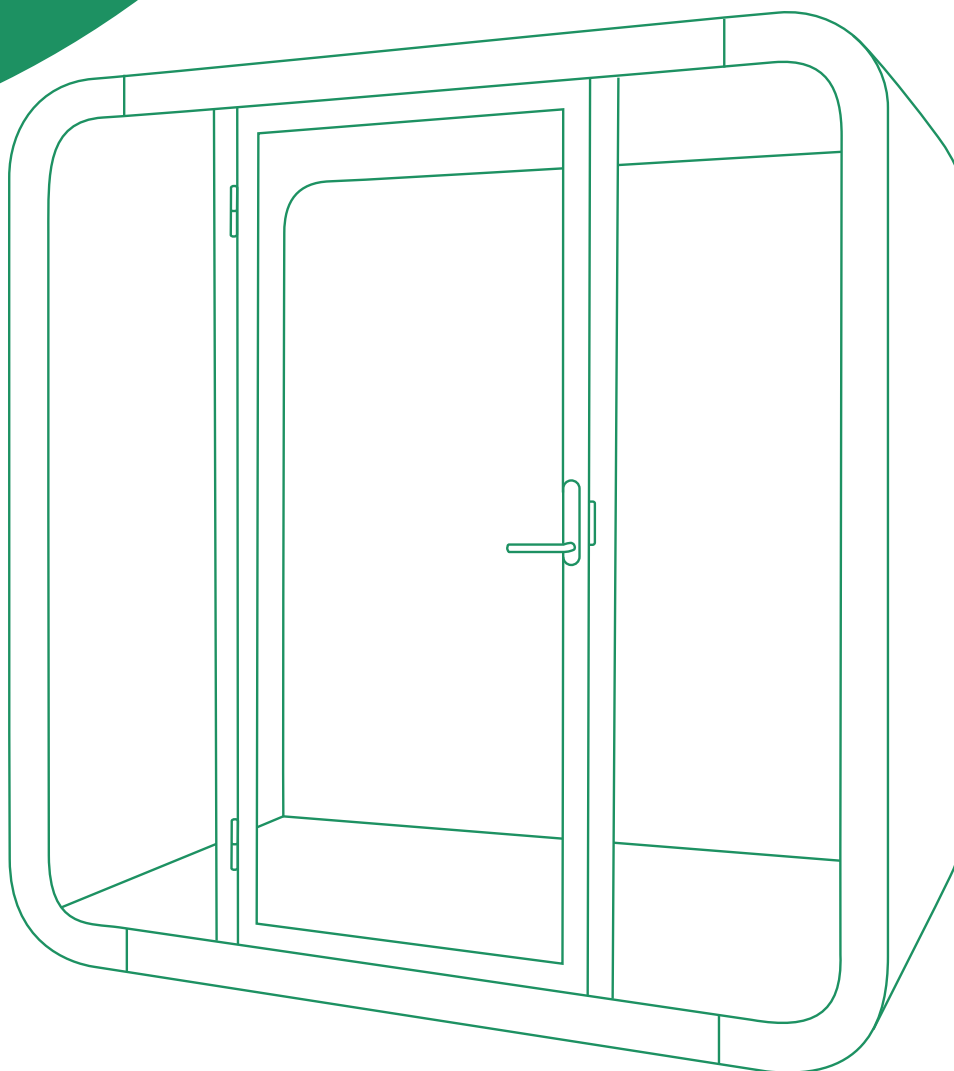


framery

SERIOUS ABOUT HAPPINESS



Framery Q Display bracket

Installation instructions

English
Version 1.0

Tampere, Finland 23.6.2021

Contents

- 1 Framery Q Display bracket Meeting Maggie.....5**
 - 1.1 Measure the center glass.....5
 - 1.2 Install the display bracket.....5
 - 1.3 Install the magnets to the display.....7
 - 1.4 Connect the display power cord to the power unit.....8
 - 1.5 Install the display to the bracket.....9

- 2 Framery Q Display bracket Working with PAL..... 11**
 - 2.1 Measure the center glass.....11
 - 2.2 Install the display bracket.....11
 - 2.3 Install the magnets to the display..... 13
 - 2.4 Connect the display power cord to the power unit.....13
 - 2.5 Install the display to the bracket..... 15

1 Framery Q Display bracket Meeting Maggie

1.1 Measure the center glass

- ⚠ **Note:** Make sure that the center glass is installed before installing the display bracket.

Measure the center glass to make sure that the glass is installed correctly.

- ⚠ **Note:** The measurement accuracy is $\pm 1\text{mm}/0.04\text{'}$

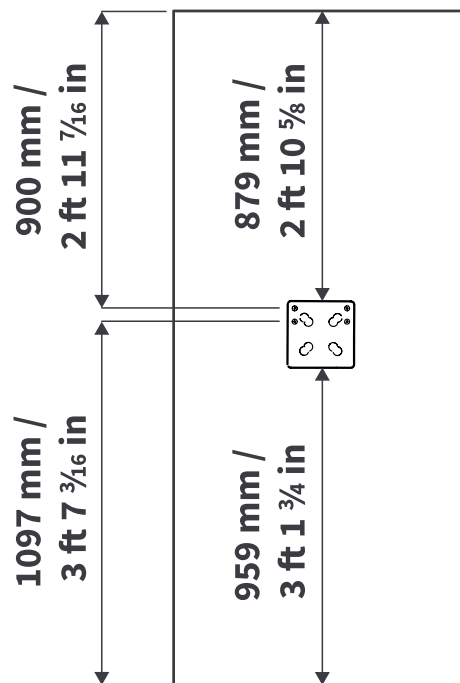


Figure 1: Q Meeting Maggie display bracket measurements

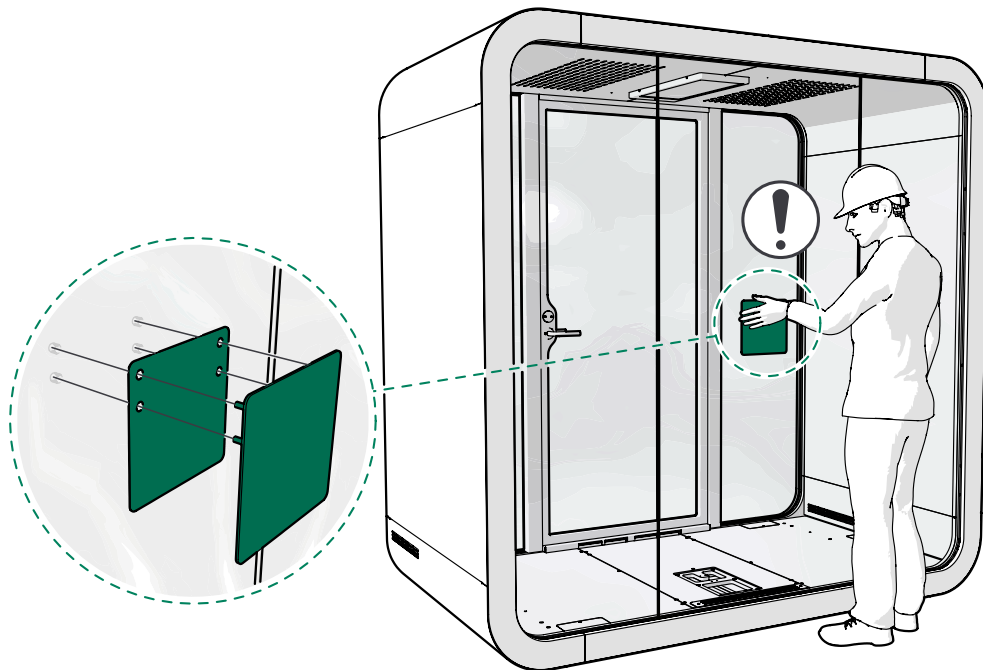
1.2 Install the display bracket

- ⚠ **Note:** Installation requires 2 people.

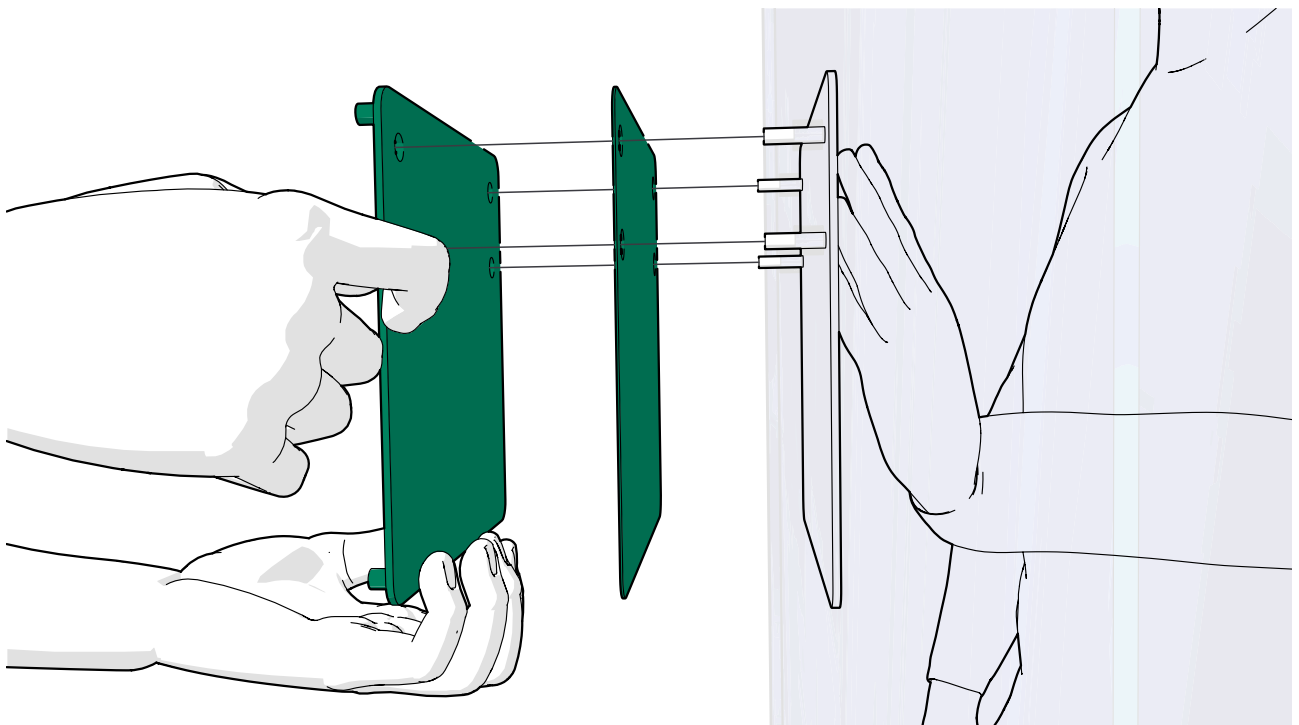
1. From outside the booth, install the back plate of the display bracket and one rubber plate to the installation holes in the center glass.



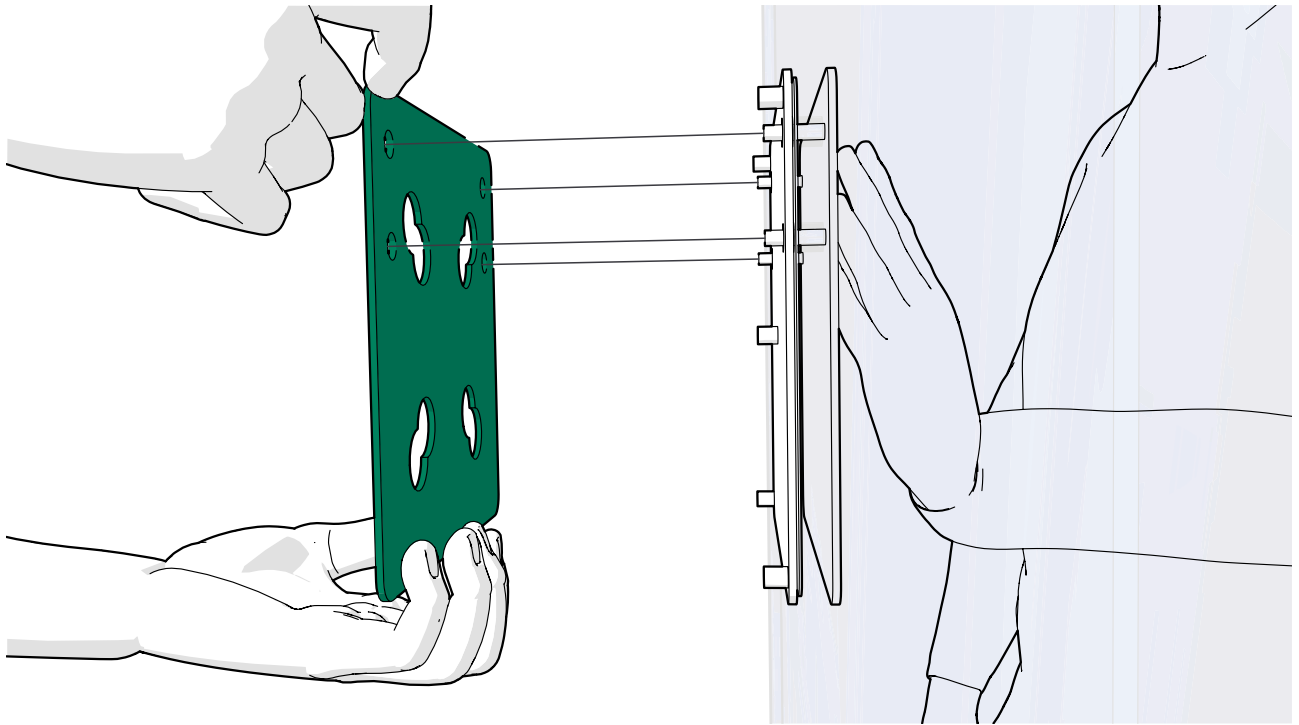
Note: Make sure that the glass and the display bracket are installed the correct way round for the interior intended to be installed.



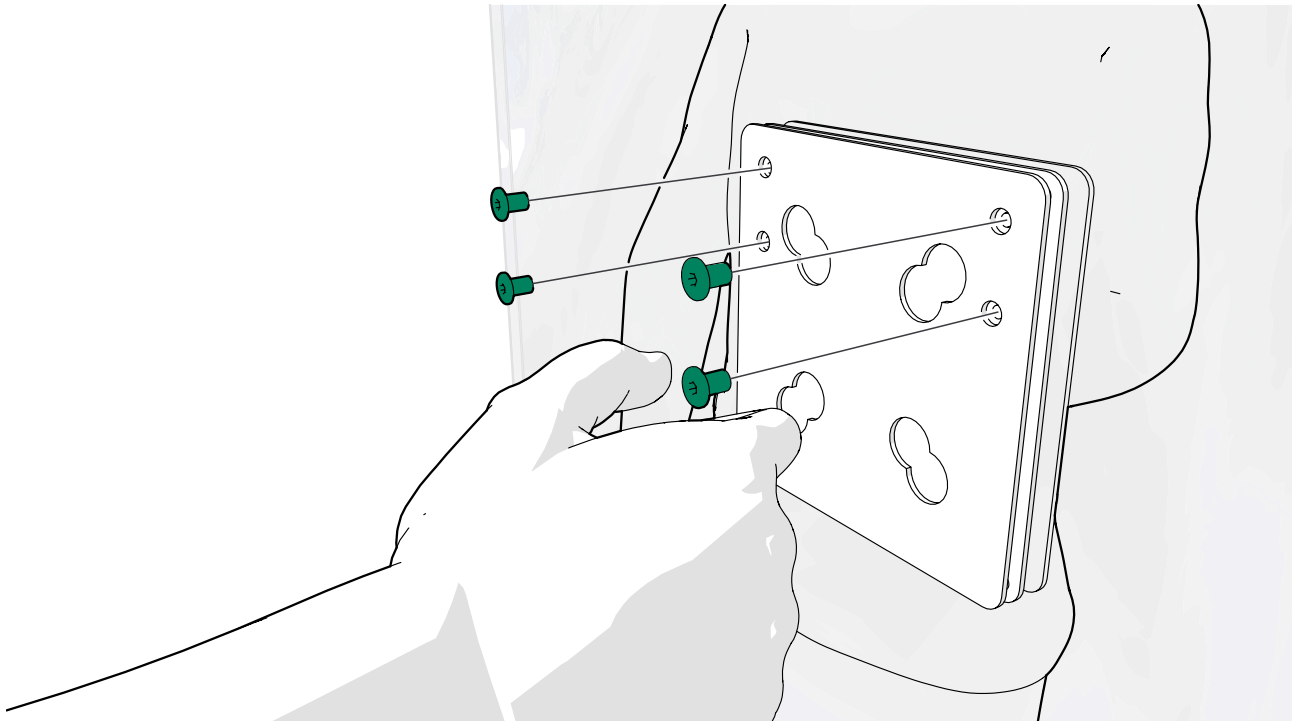
2. Support the parts on the outside of the center glass and, from the inside of the pod, install the remaining rubber plate and middle plate onto the threaded pegs of the back plate.



3. From inside the booth, install the front plate onto the threaded pegs of the back plate.

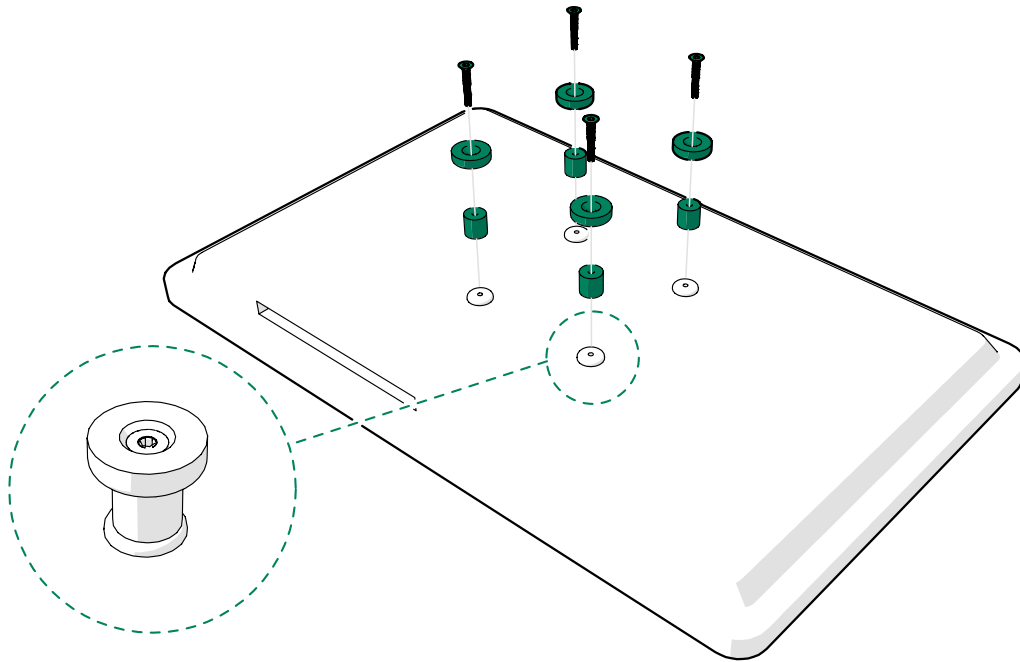


4. Secure the assembly with M6 socket cap nuts (4 pcs).



1.3 Install the magnets to the display

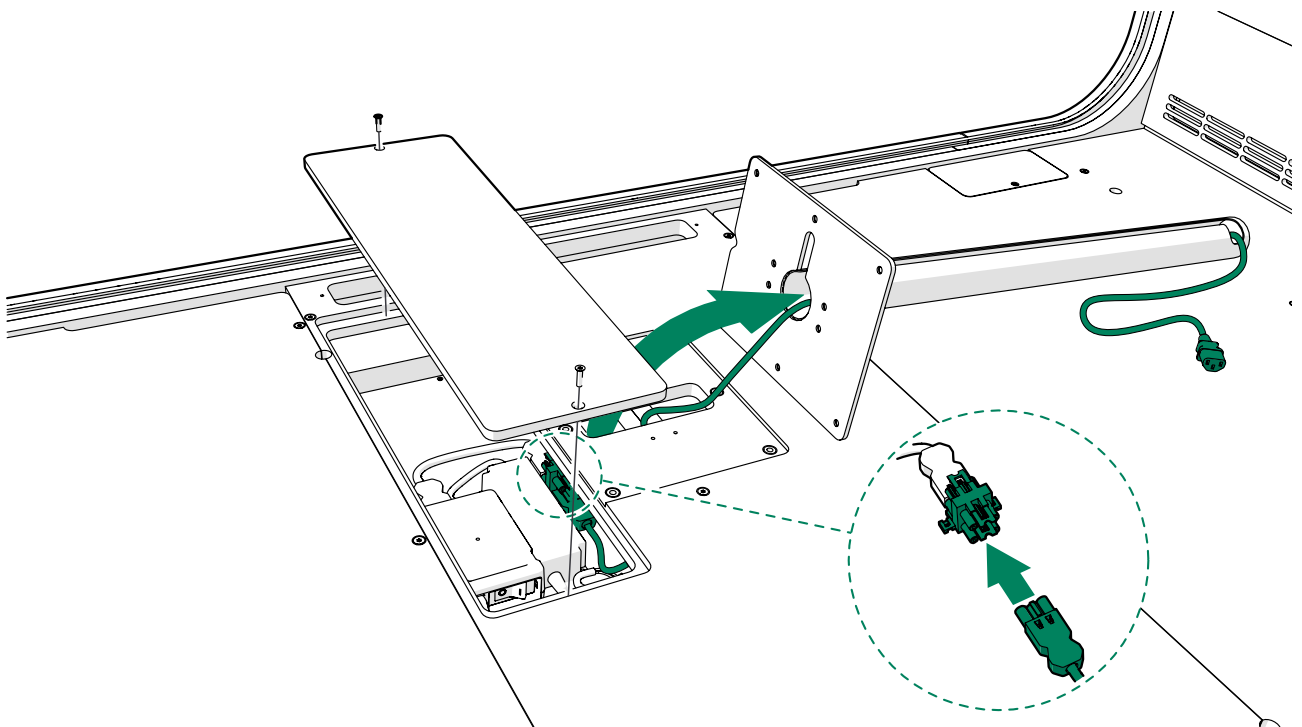
Install the magnets and nylon spacers to the VESA 75/100 mounting holes at the back of the customer supplied display with M4x25 screws (4 pcs).



1.4 Connect the display power cord to the power unit

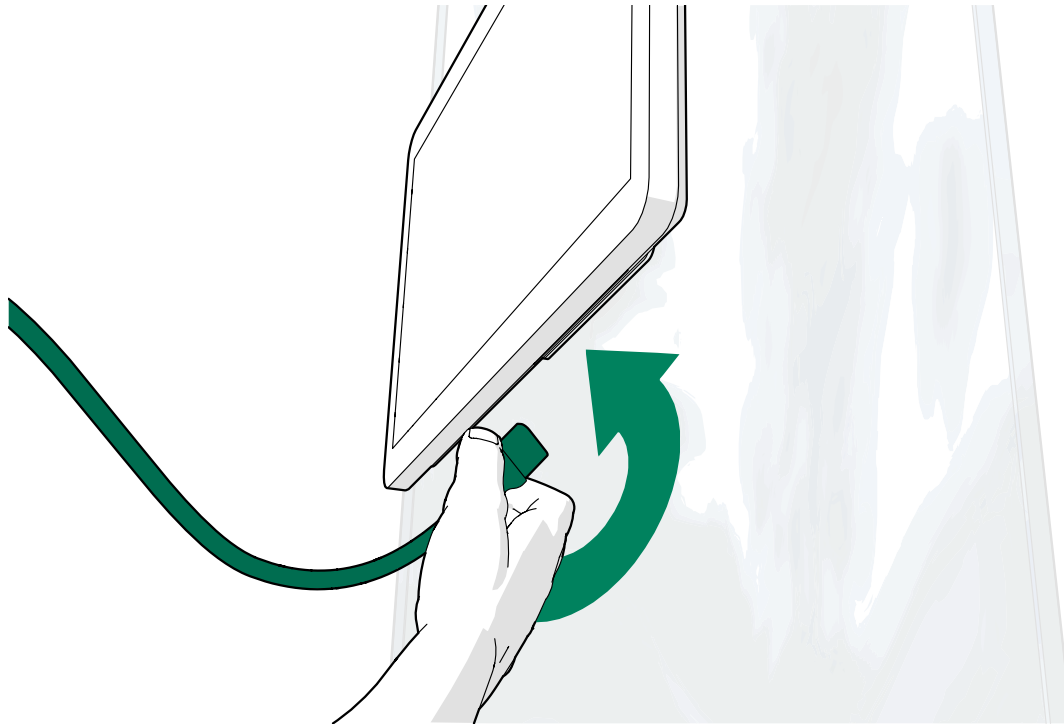
The display bracket delivery contains a GST-C13 cord for the customer supplied display and a splitter. The splitter is installed to the GST cord coming from the power unit. See the pod installation instructions for more information about installing the other electrical components.

1. Connect the GST end of the display cord to the splitter and guide it into the table leg.



2. Install the table according to the pod installation instructions.
3. Guide the cord through a cable wrap. Install the cable wrap to the bottom of the table.
4. Guide the display power cord through the cord duct in the monitor arm.

5. Connect the GST cord to the display.



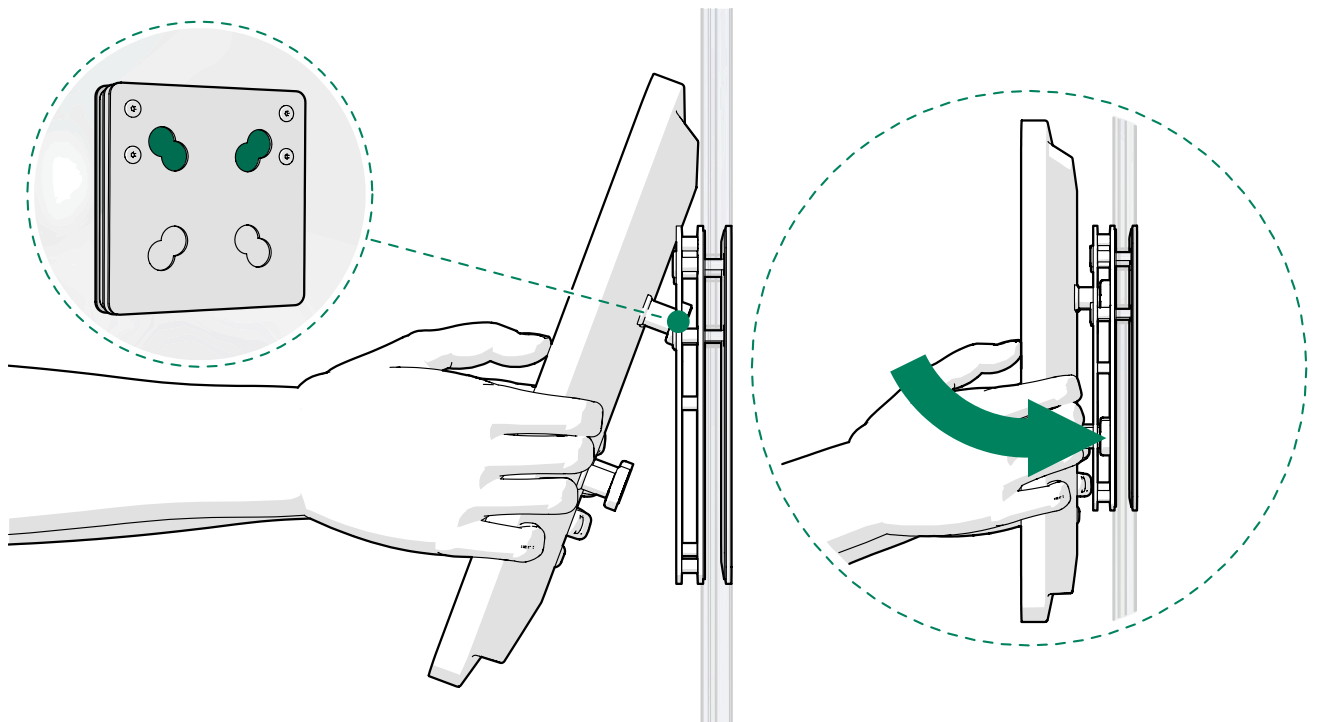
1.5 Install the display to the bracket



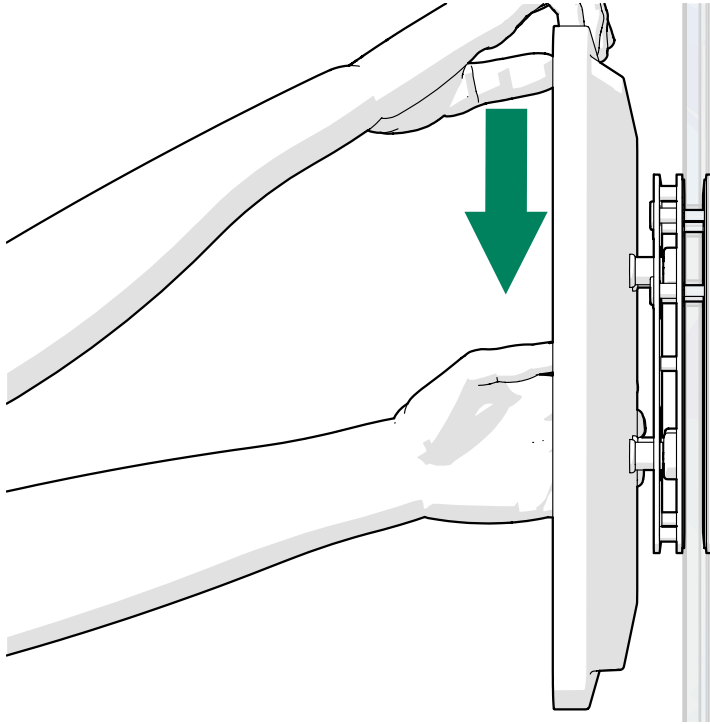
Note: Make sure that the electrical cords are not pinched between the bracket and the magnets.

1. Tilt the display and guide the upper magnets on the back of the display into the upper slots of the display bracket and turn the lower edge into the bracket.

The magnets at the back of the display will snap it into place.



2. Press the display lightly down from the top edge to make sure that it is securely in place.



2 Framery Q Display bracket Working with PAL

2.1 Measure the center glass

- ⚠ **Note:** Make sure that the center glass is installed before installing the display bracket.

Measure the center glass to make sure that the glass is installed correctly.

- ⚠ **Note:** The measurement accuracy is $\pm 1\text{mm}/0.04''$

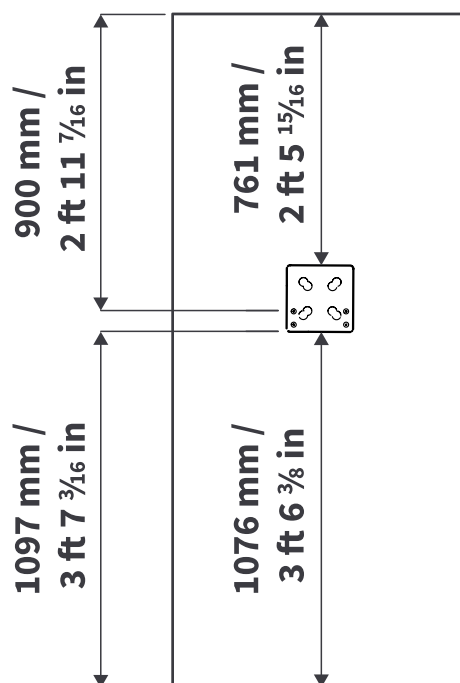


Figure 2: Q Working with PAL display bracket measurements

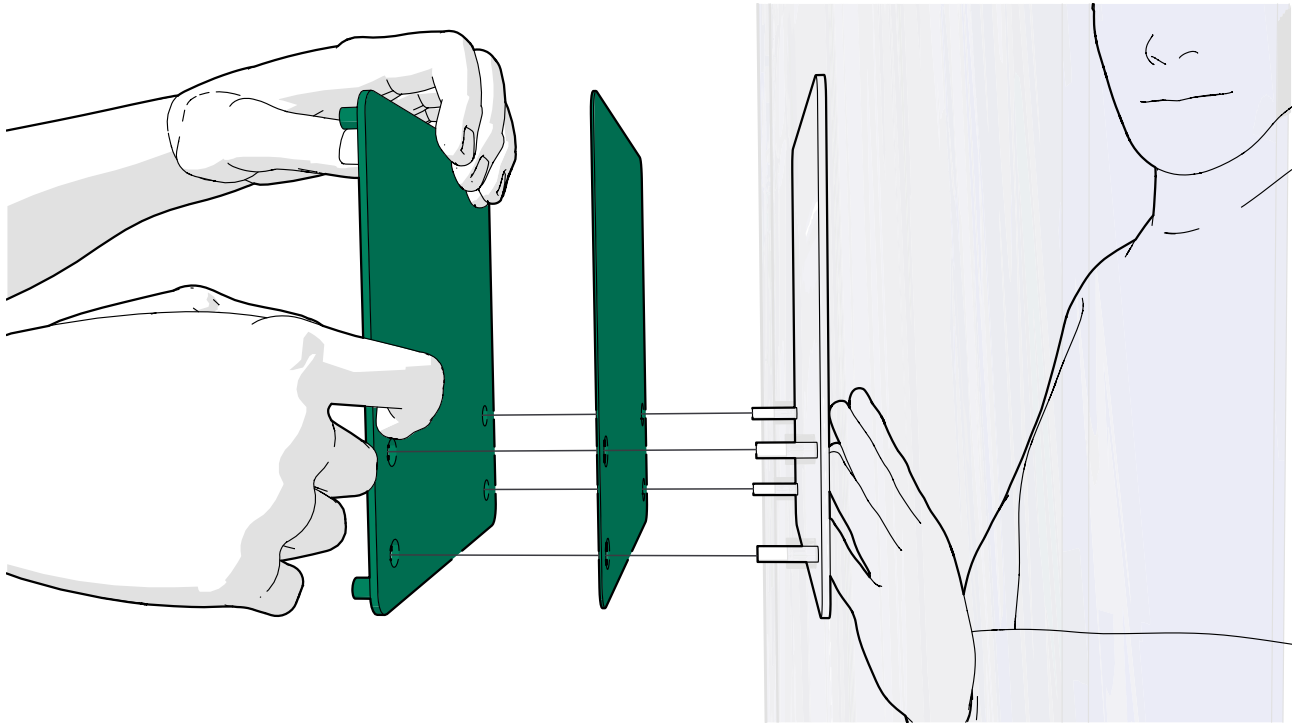
2.2 Install the display bracket

- ⚠ **Note:** Installation requires 2 people.

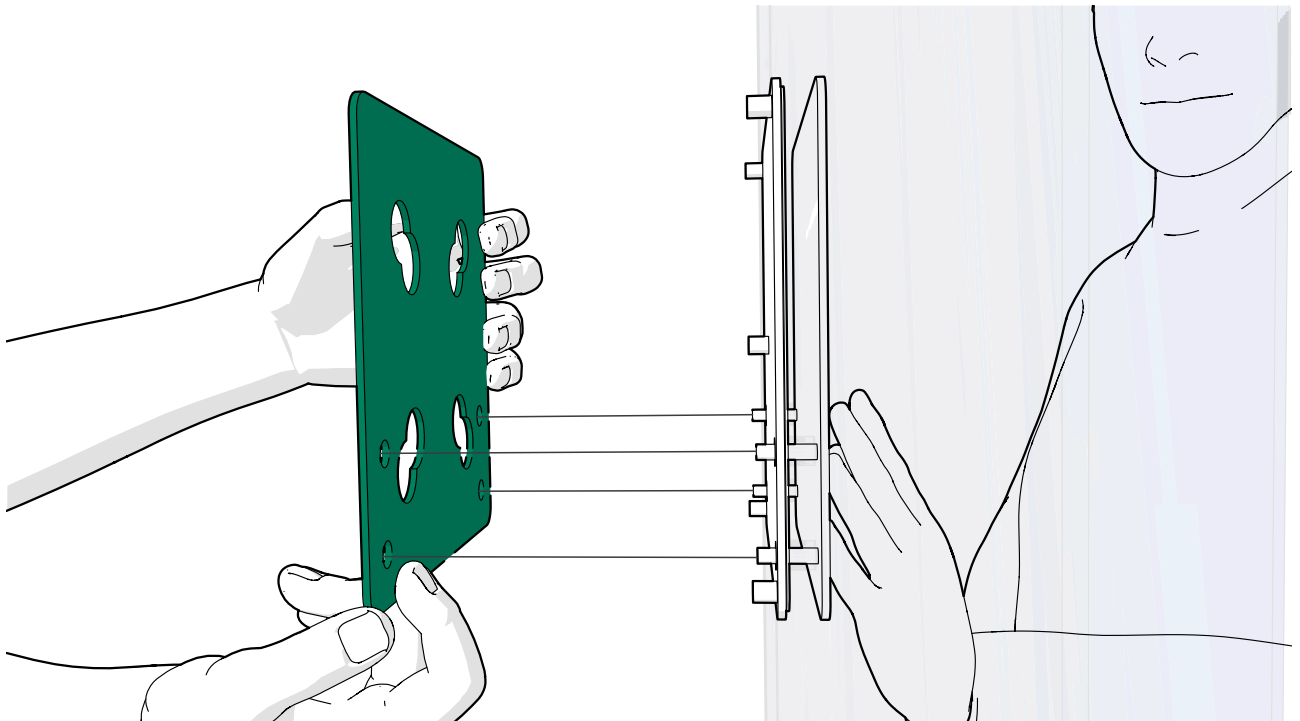
1. From outside the booth, install the back plate of the display bracket and one rubber plate to the installation holes in the center glass.

- ⚠ **Note:** Make sure that the glass and the display bracket are installed the correct way round for the interior intended to be installed.

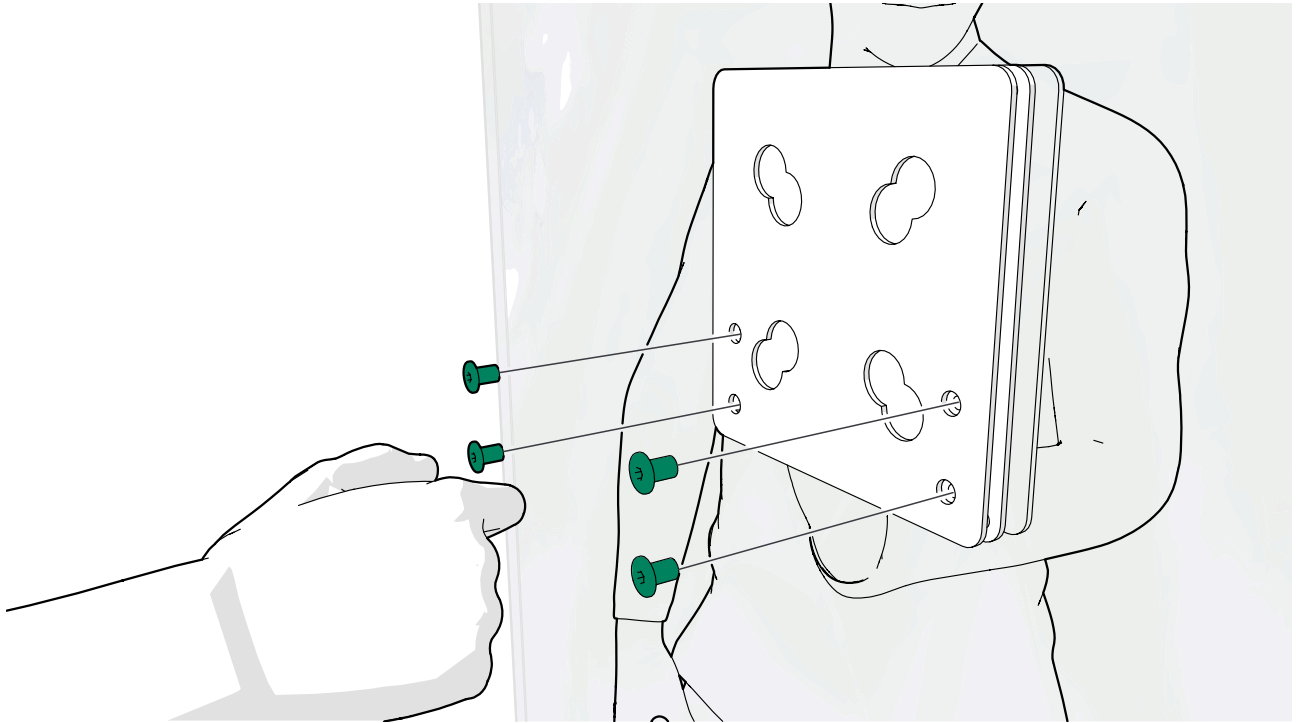
2. Support the parts on the outside of the center glass and, from the inside of the pod, install the remaining rubber plate and middle plate onto the threaded pegs of the back plate.



3. From inside the booth, install the front plate onto the threaded pegs of the back plate.

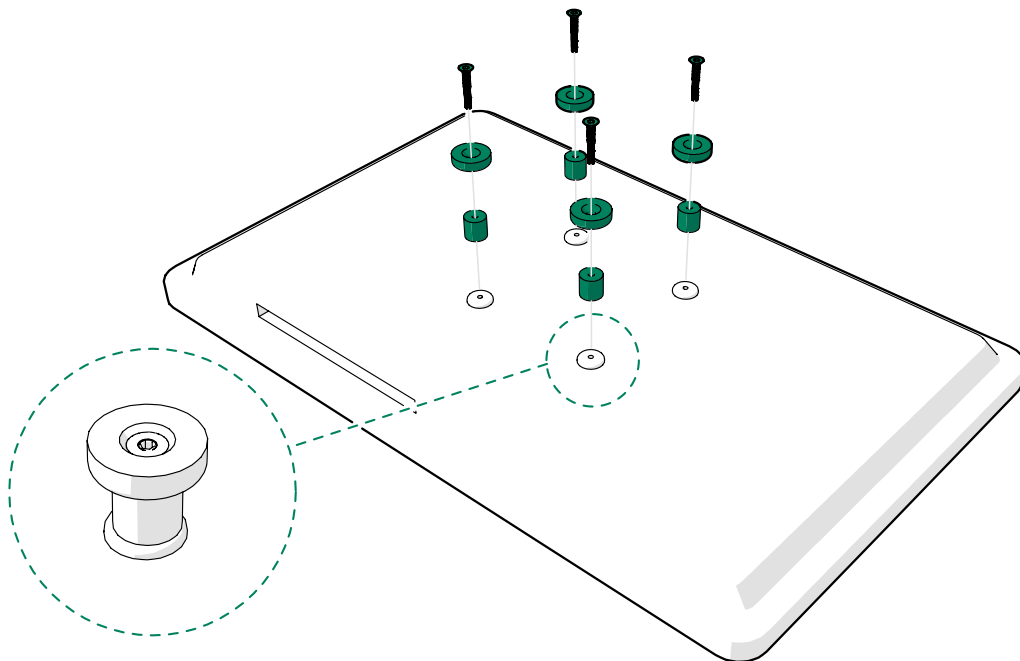


4. Secure the assembly with M6 socket cap nuts (4 pcs).



2.3 Install the magnets to the display

Install the magnets and nylon spacers to the VESA 75/100 mounting holes at the back of the customer supplied display with M4x25 screws (4 pcs).

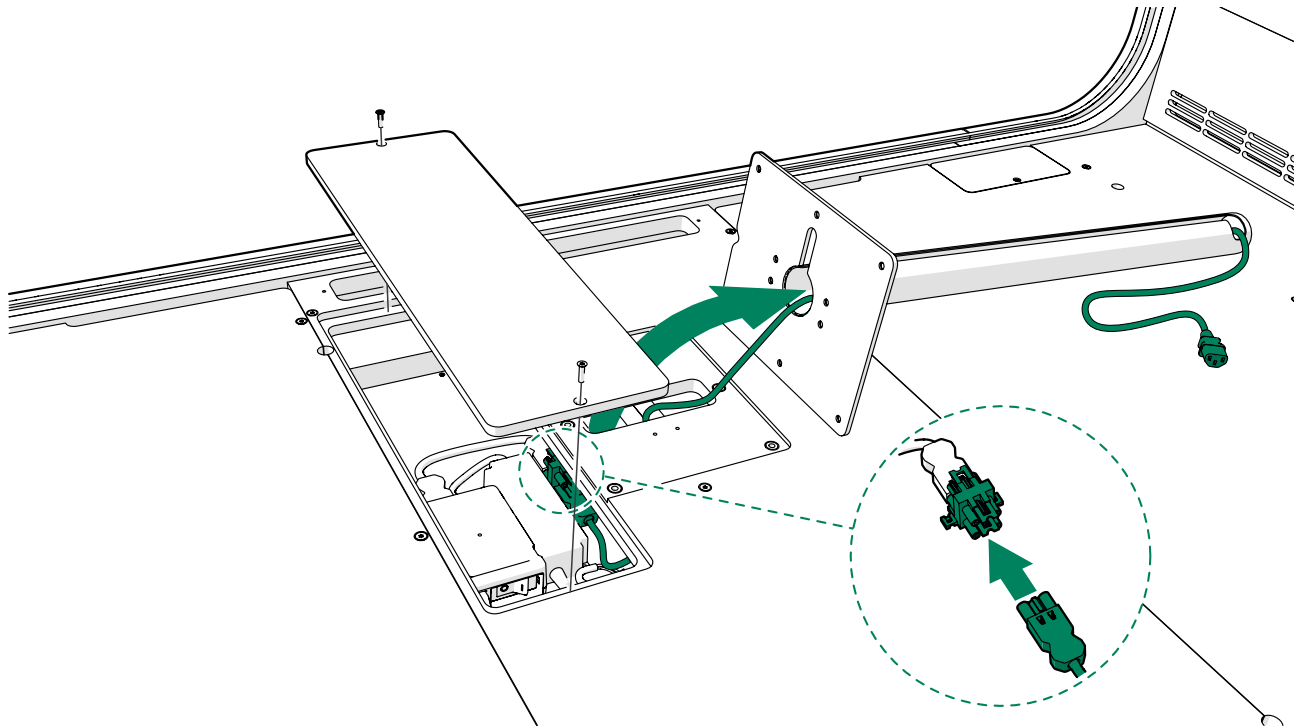


2.4 Connect the display power cord to the power unit

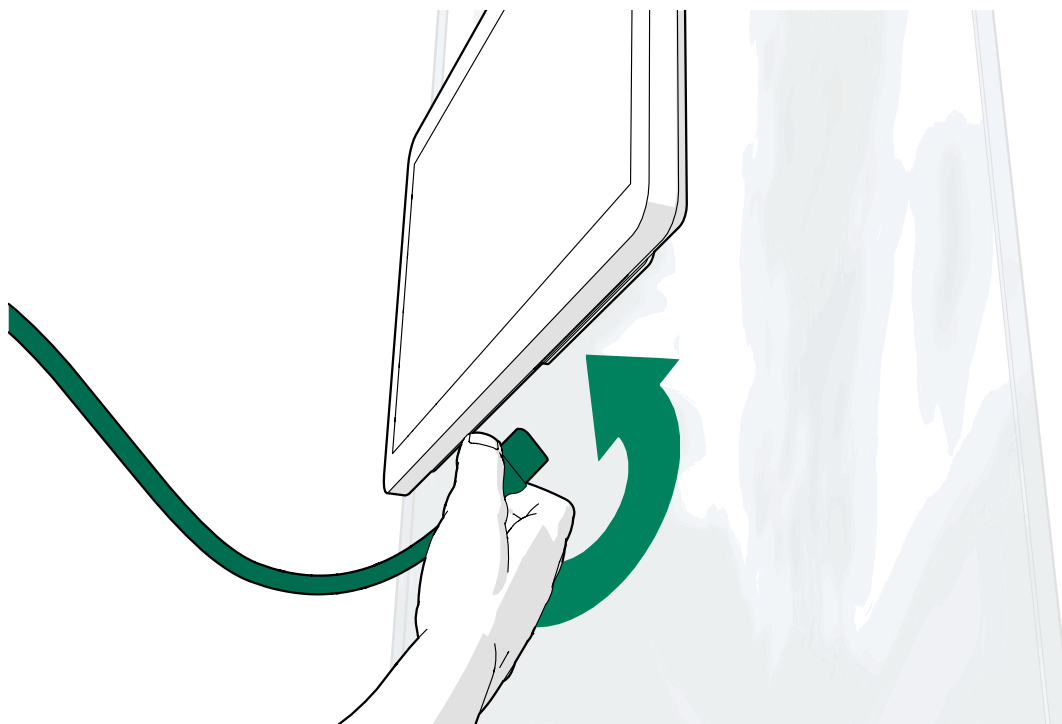
The display bracket delivery contains a GST-C13 cord for the customer supplied display and a splitter. The splitter is installed to the GST cord coming from the power unit. See

the pod installation instructions for more information about installing the other electrical components.

1. Connect the GST end of the display cord to the splitter and guide it into the table leg.



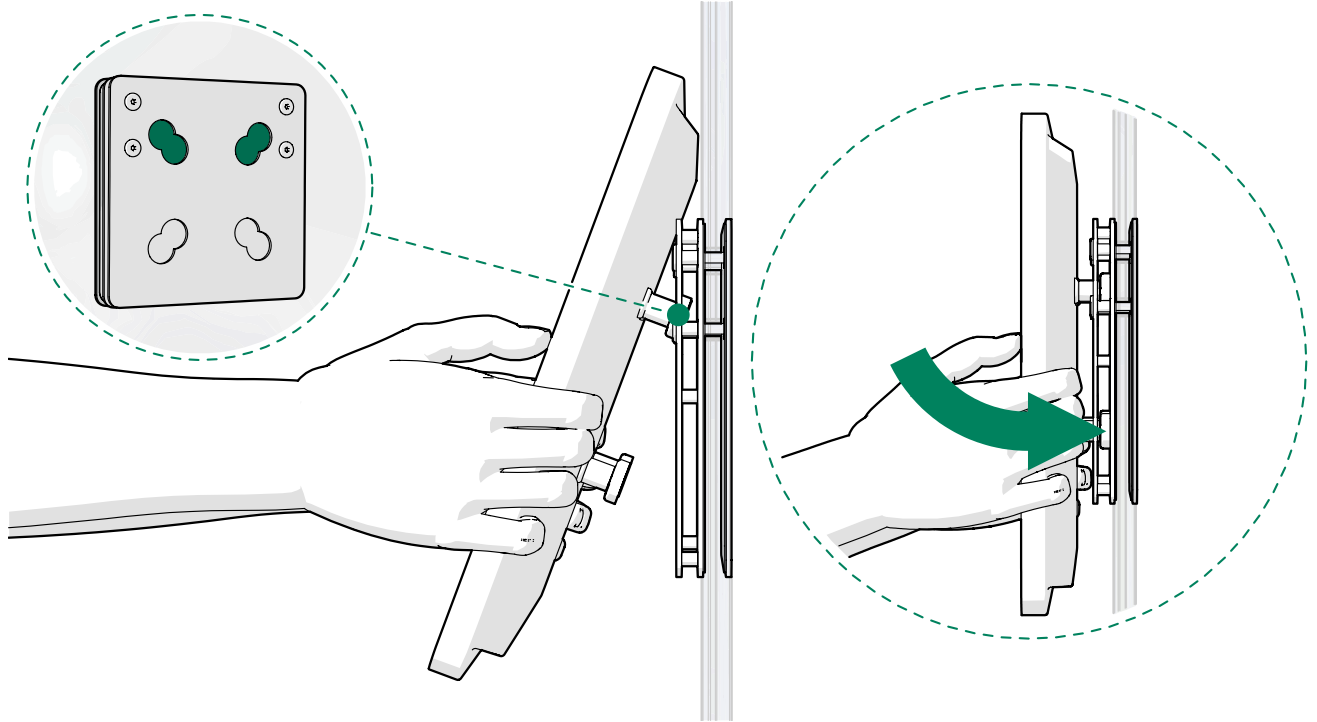
2. Install the table according to the pod installation instructions.
3. Guide the cord through a cable wrap. Install the cable wrap to the bottom of the table.
4. Guide the display power cord through the cord duct in the monitor arm.
5. Connect the GST cord to the display.



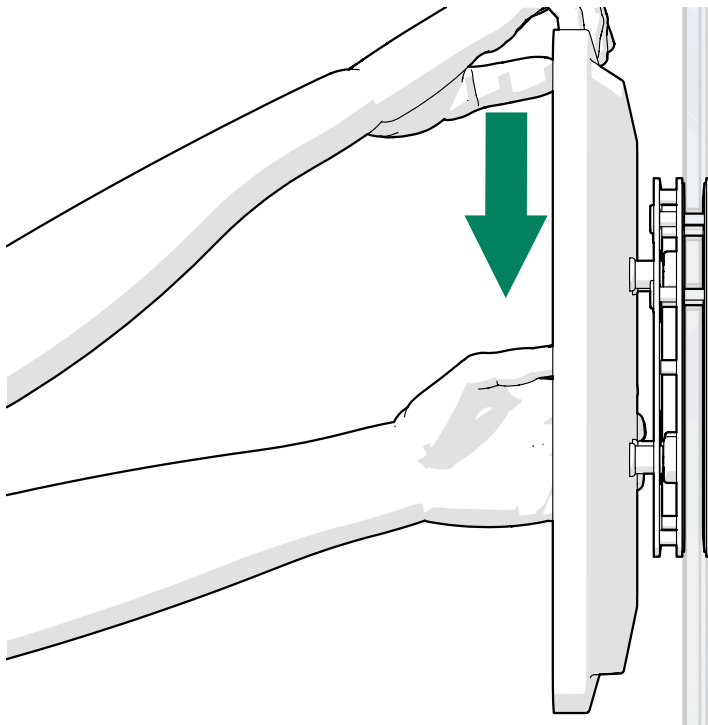
2.5 Install the display to the bracket

⚠ **Note:** Make sure that the electrical cords are not pinched between the bracket and the magnets.

1. Tilt the display and guide the upper magnets on the back of the display into the upper slots of the display bracket and turn the lower edge into the bracket.
The magnets at the back of the display will snap it into place.



2. Press the display lightly down from the top edge to make sure that it is securely in place.



framery

Framery Q Monitor Arm

Installation instructions

Patamäenkatu 7

33900 Tampere

FINLAND

VAT: FI 23527139