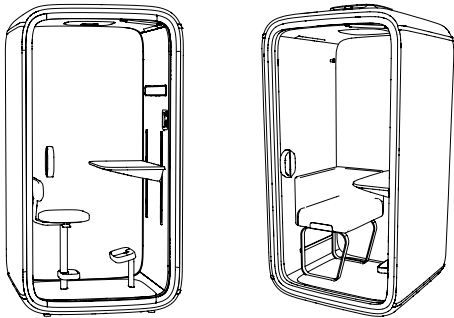


Framery One

Quick Installation Guide

version 1



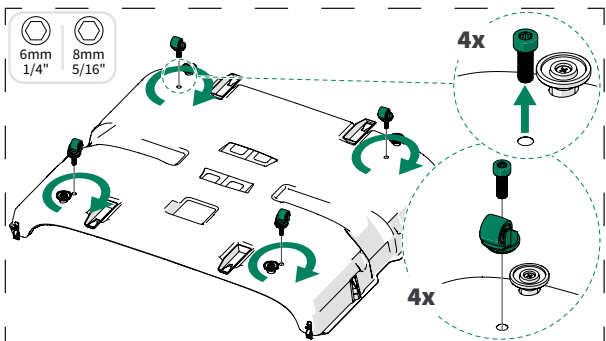
INSTALLATION
VIDEOS



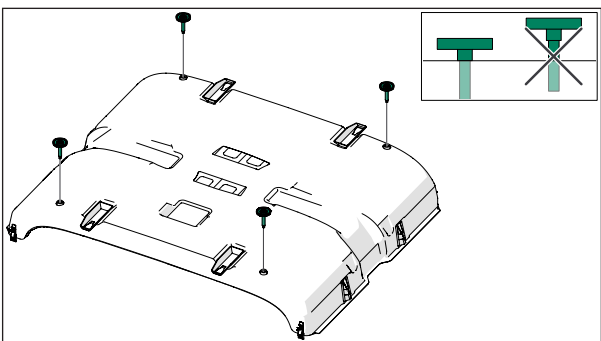
INSTALLATION
INSTRUCTIONS

1. CHASSIS

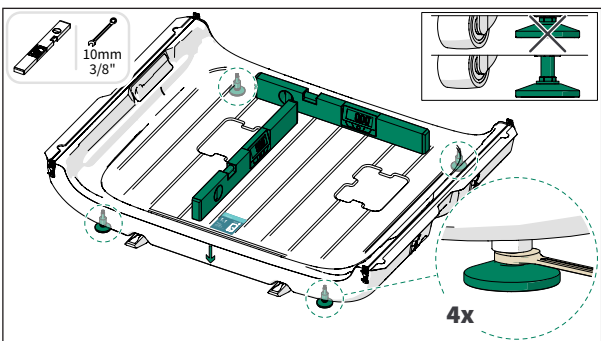
1.1 Casters, optional



1.2 Leveling feet

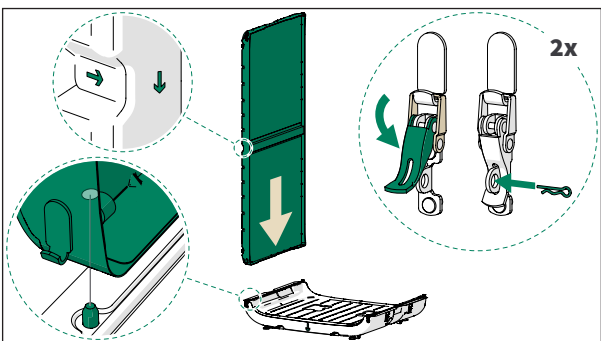
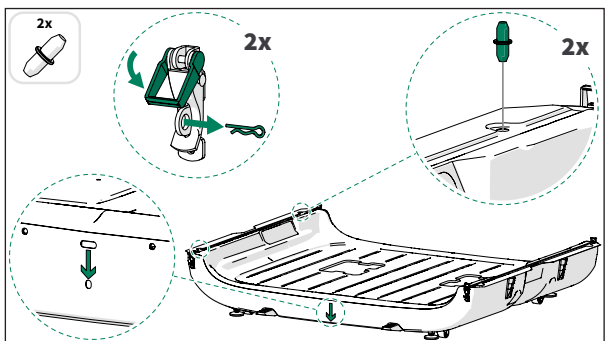


Level the floor

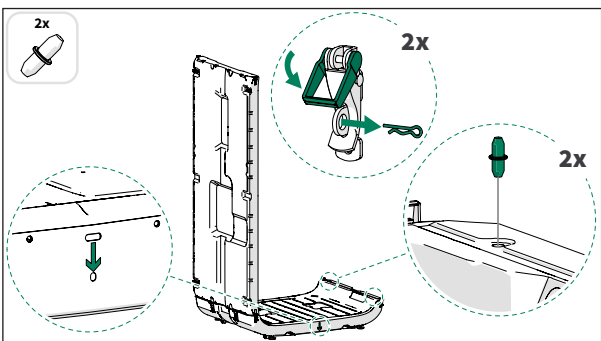


! If the floor is not leveled, the sound insulation of the pod will be improper. Level the floor and after leveling, stand on it to make sure that it is stable.

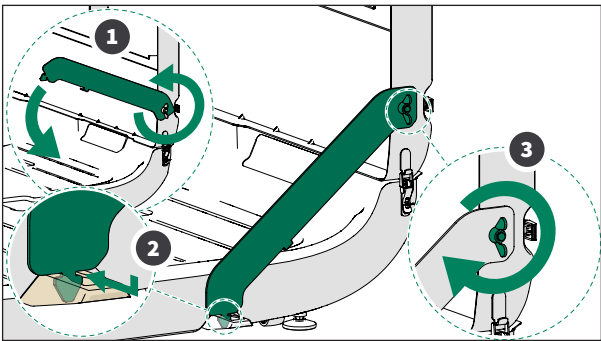
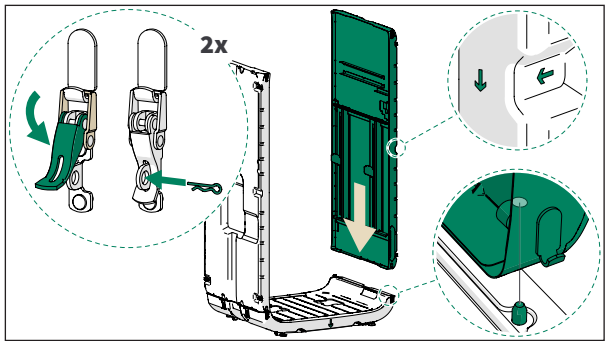
1.3 Back wall



1.4 Table wall

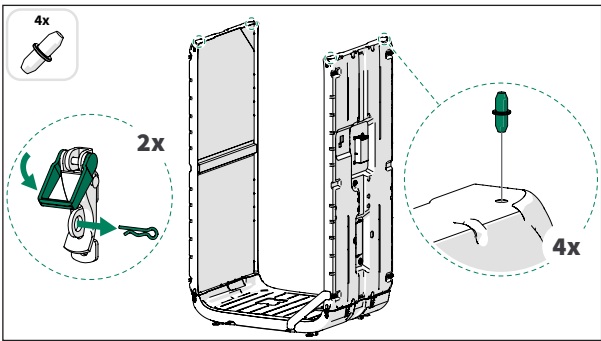


Attach the installation support

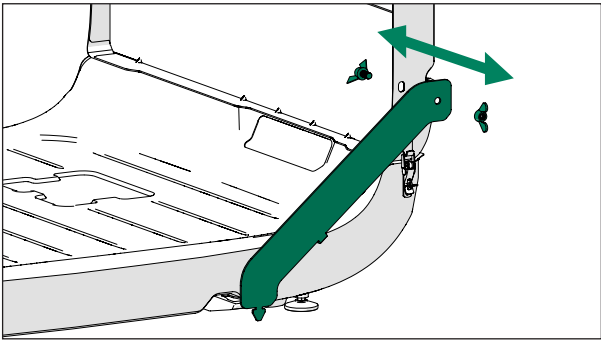
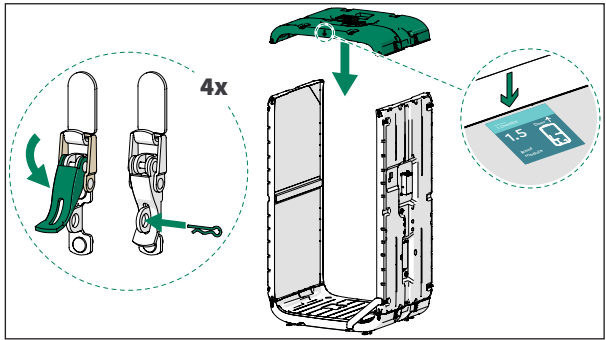


! The installation support is a temporary safety device.

1.5 Roof module



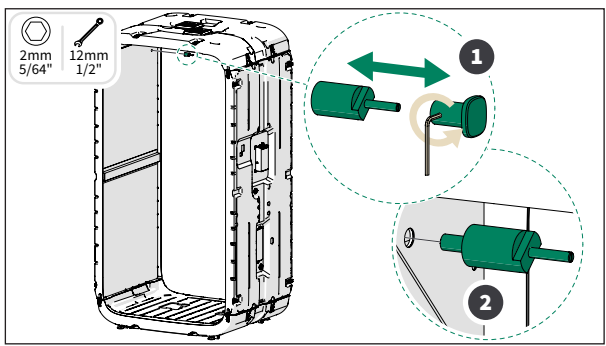
Remove the installation support



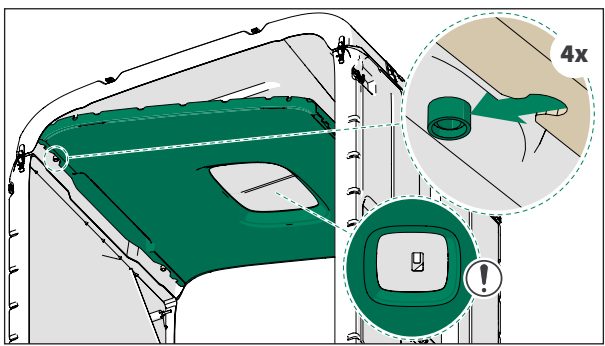
! You can reuse or recycle the installation support.

2. INTERIOR

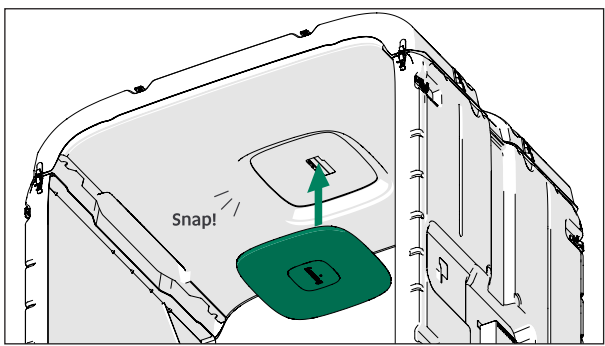
2.1 Coat hook bracket



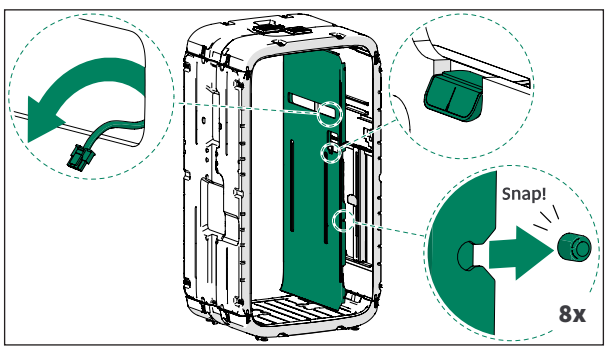
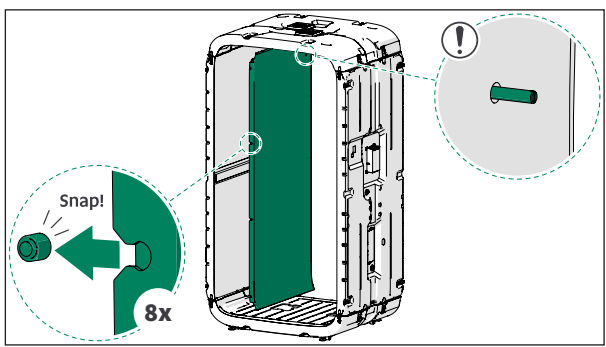
2.2 Ceiling interior panel



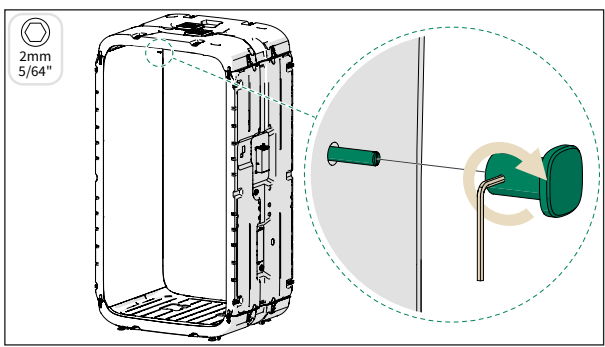
2.3 Ceiling light



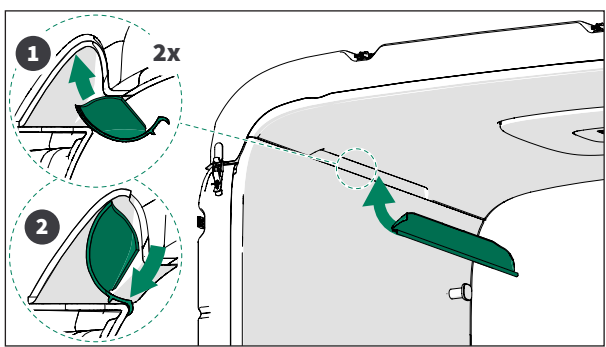
2.4 Wall interior panels



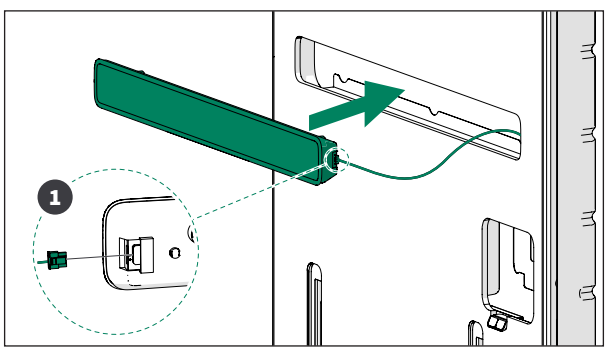
2.5 Coat hook



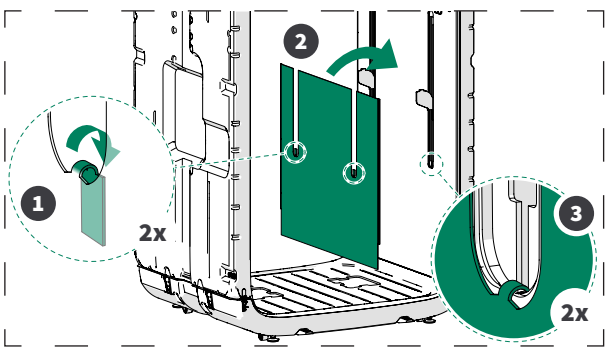
2.6 Ventilation scoops



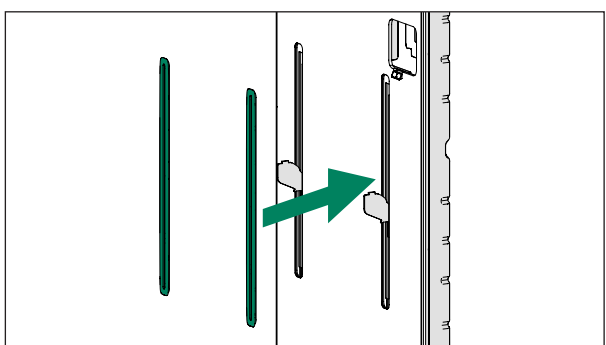
2.7 Wall light



2.8 Kickplate, optional

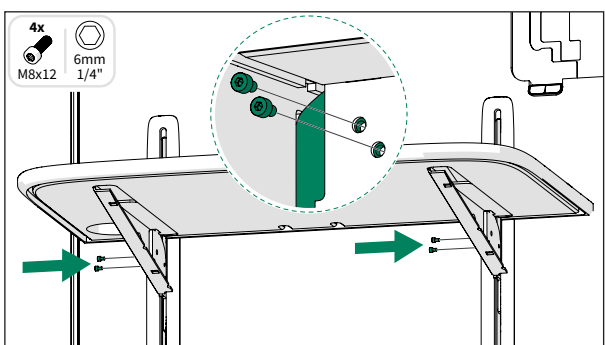
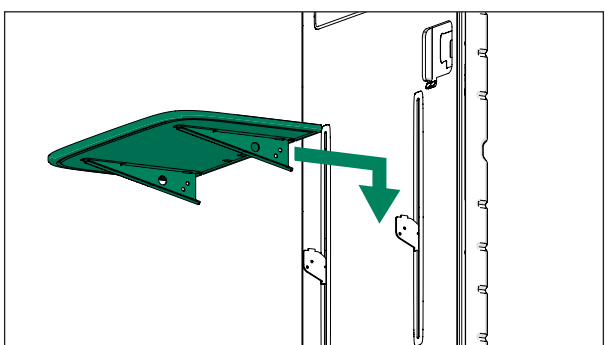


2.9 Table trims



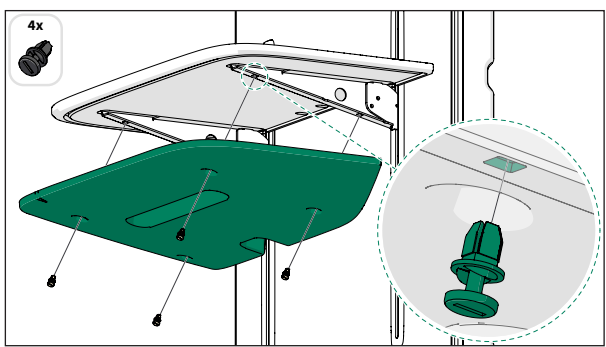
! With a fixed table, there are no trims.

2.10 Table

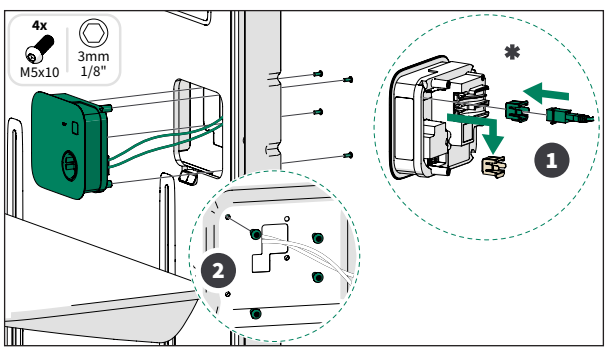


! Install the screws from the left side of the table brackets.

Table felt

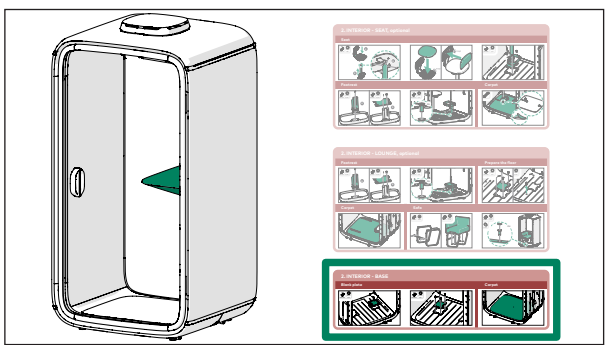
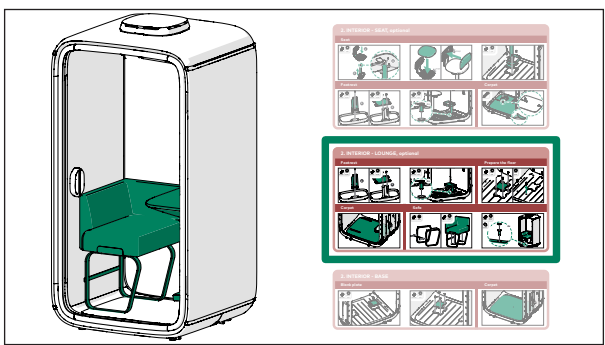
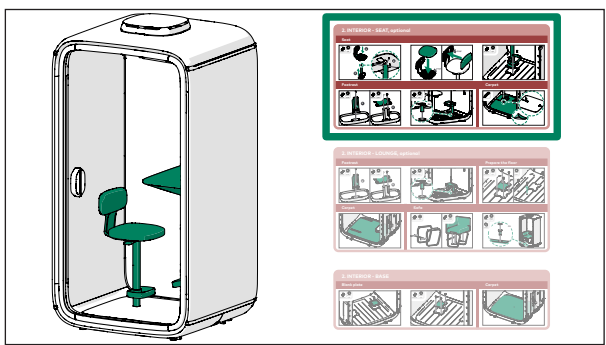


2.11 Control panel



* = Optional LAN port and cable

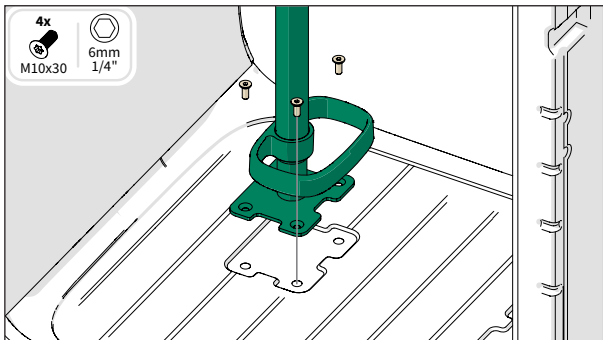
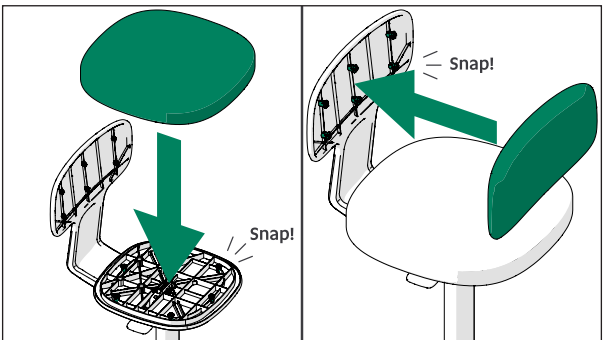
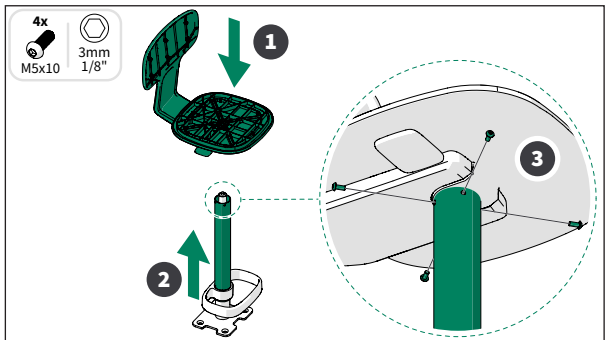
Instructions for different furniture options are on the next page.



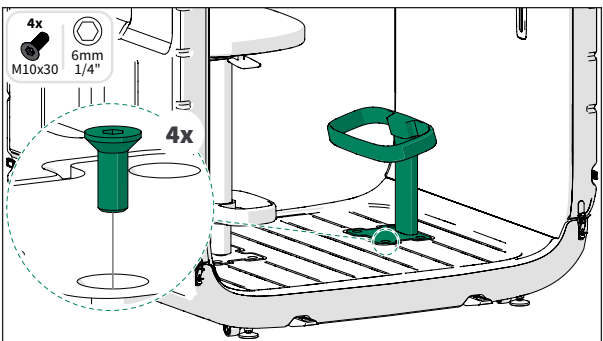
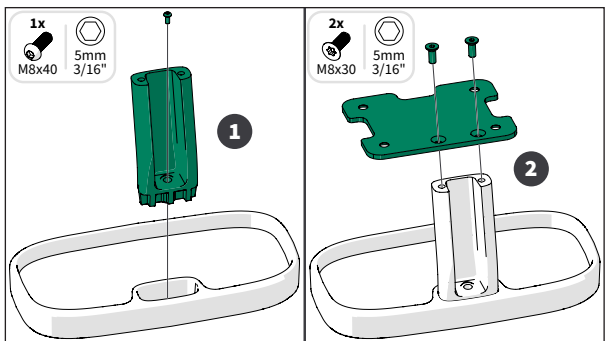
framery

2. INTERIOR - SEAT, optional

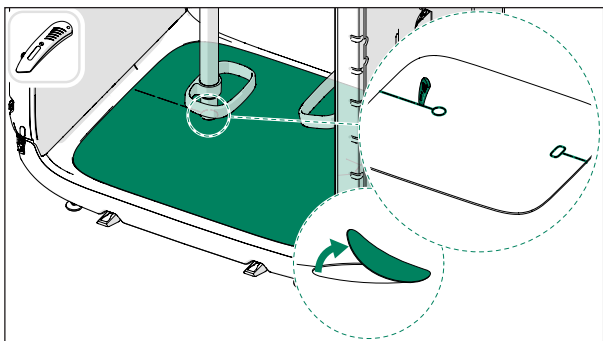
Seat



Footrest

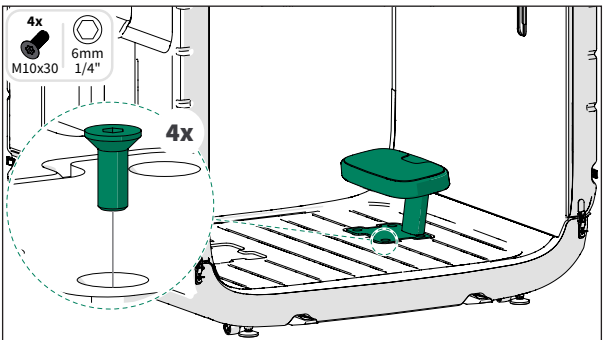
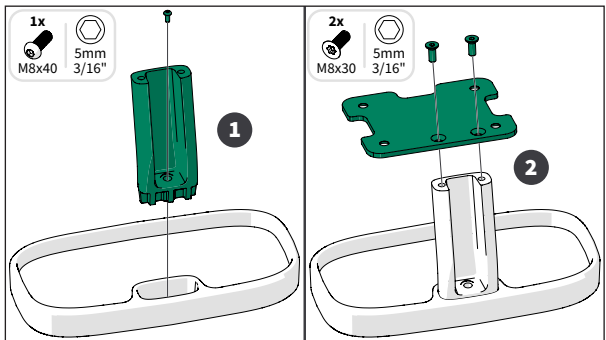


Carpet

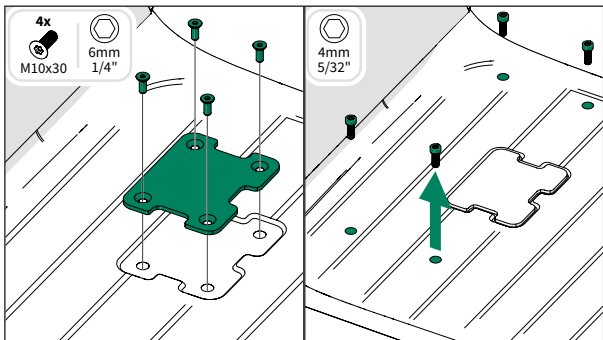


2. INTERIOR - LOUNGE, optional

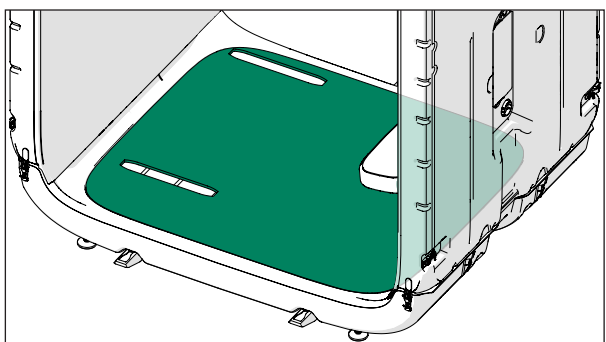
Footrest



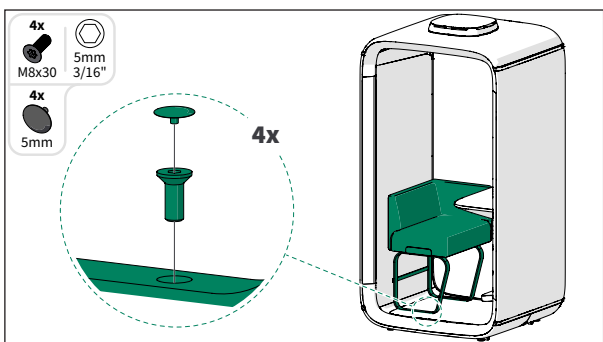
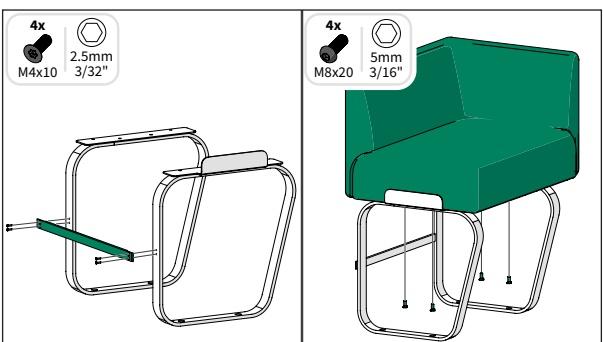
Prepare the floor



Carpet

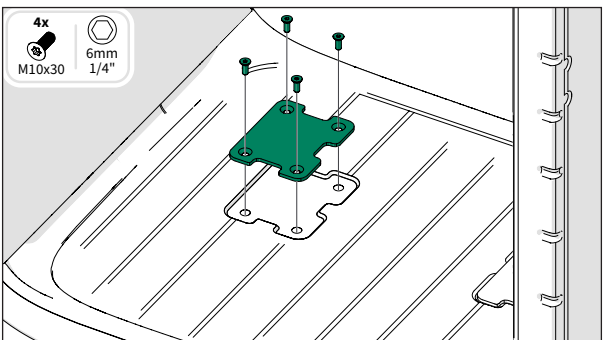
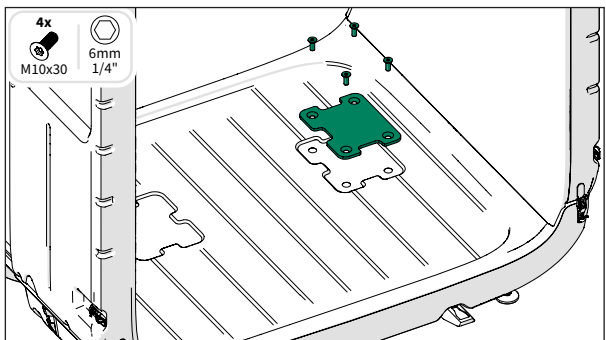


Sofa

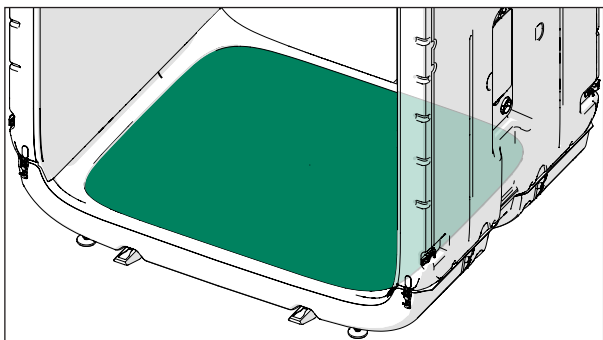


2. INTERIOR - BASE

Blank plate

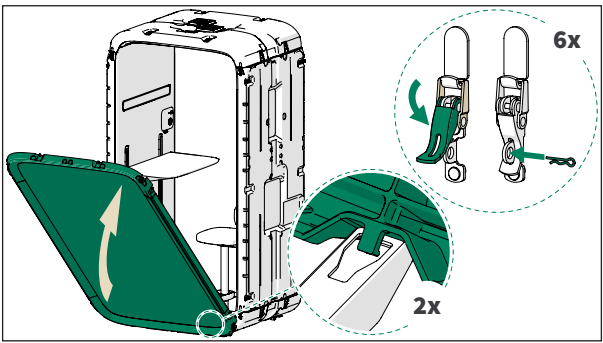
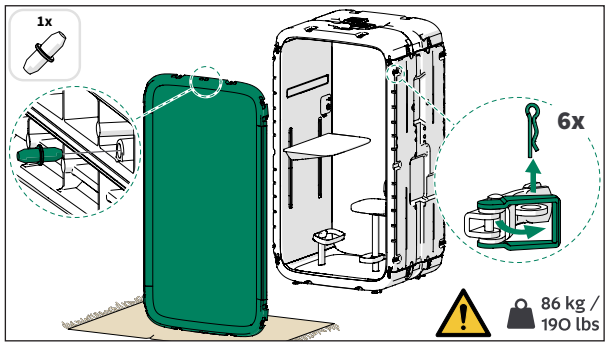


Carpet

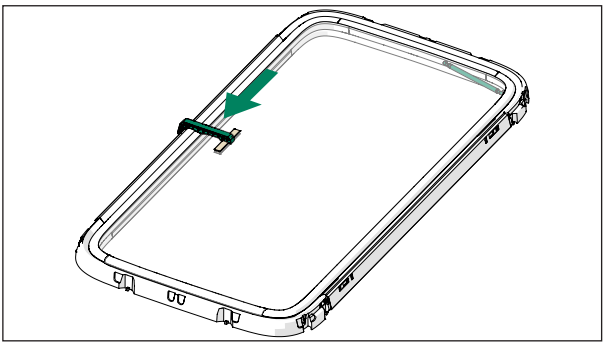


3. DOOR & BACK GLASS

3.1 Back glass

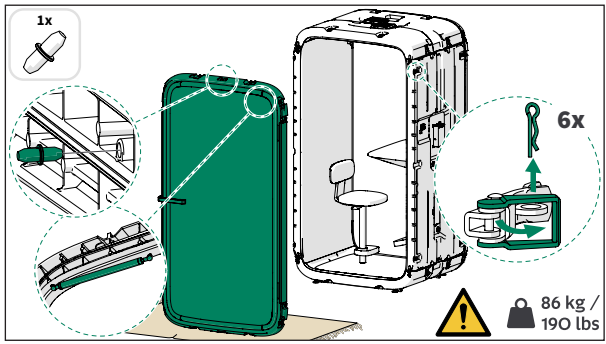


3.2 Door frame

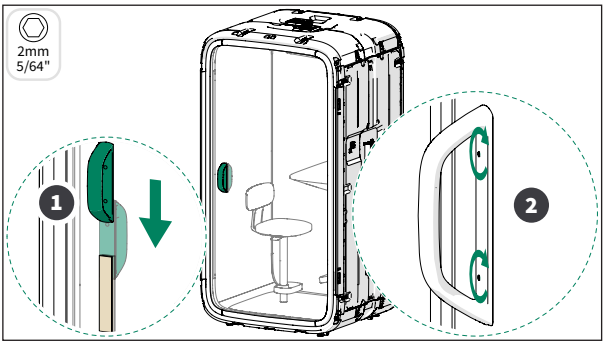
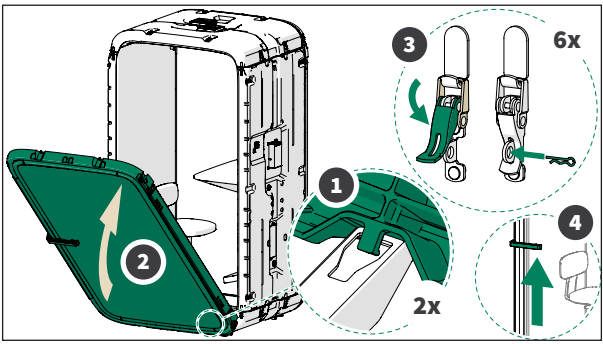


- ! Install the door brace before lifting the front frame with the door from the crate.
- ! Changing the door handedness, see the instructions below.

3.3 Door handles



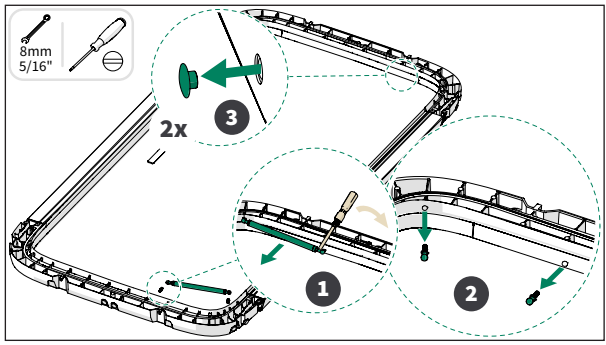
- ! Make sure that the door frame is the right way around. The strut should be in the upper corner.



- ! Do not overtighten the handle screws.

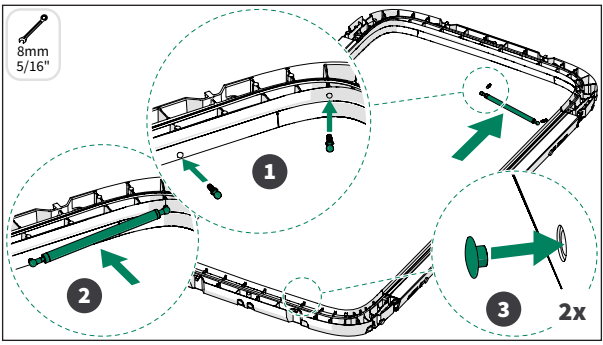
3. CHANGE THE DOOR HANDEDNESS, optional

Remove the spring

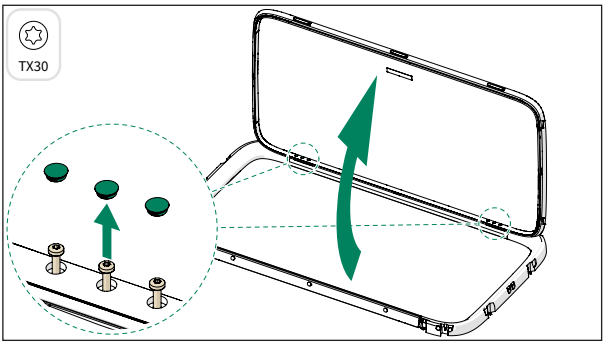


- ! Change the door handedness if necessary before installing the door.

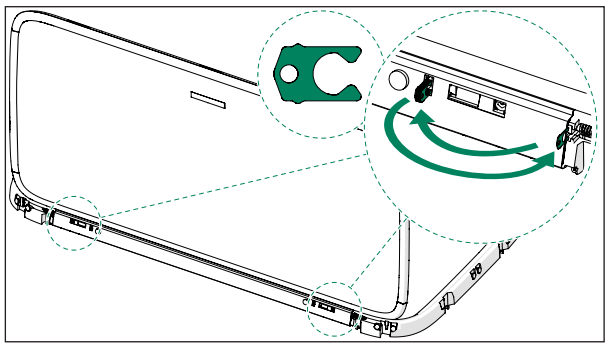
Install the spring



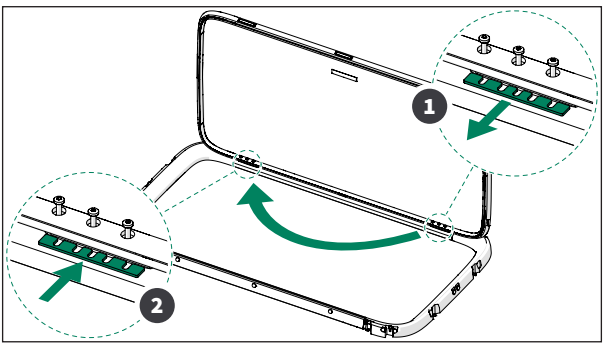
Loosen the hinge screws



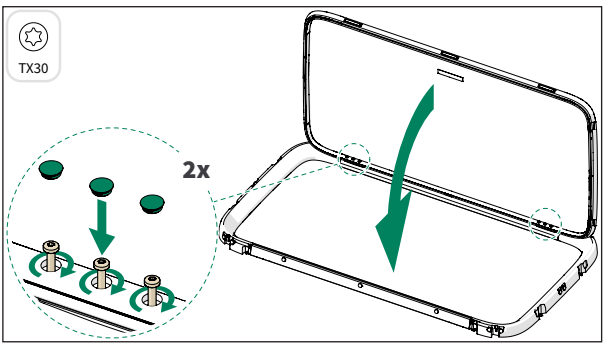
Interchange the shim plates



Move the spacer

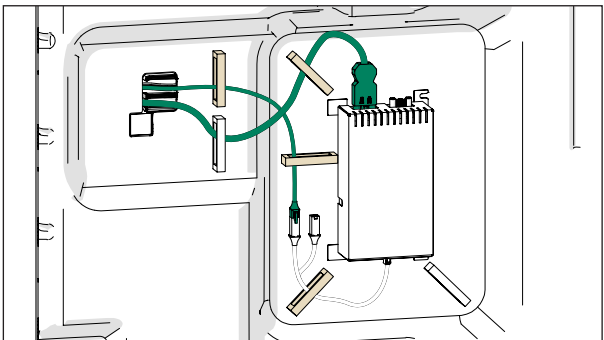


Tighten the hinge screws

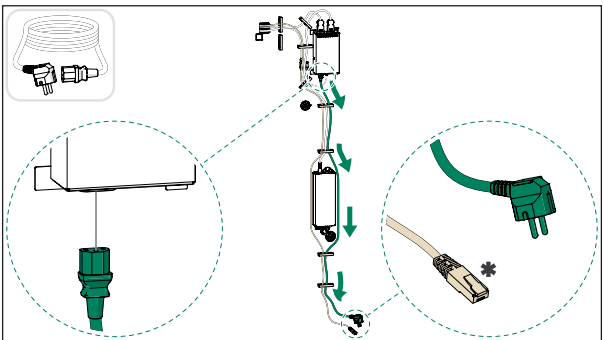


4. ELECTRICS

4.1 Electrical cords

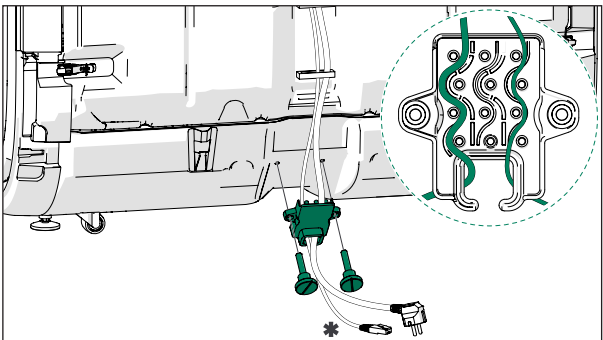


Power cord (floor)



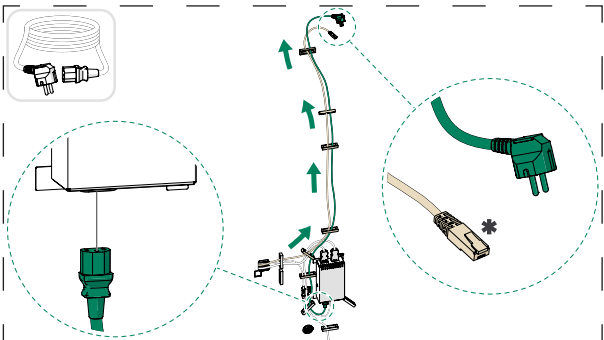
* = Optional LAN cable

Strain relief (floor)



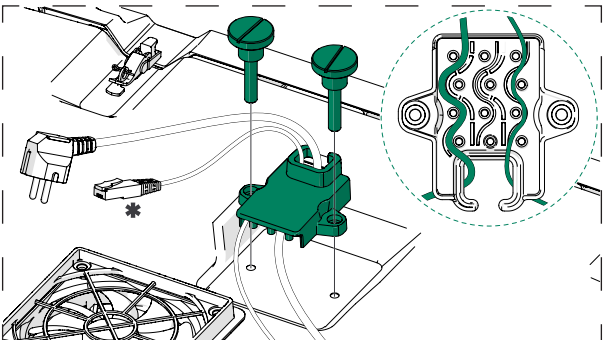
* = Optional LAN cable

Power cord (roof), optional



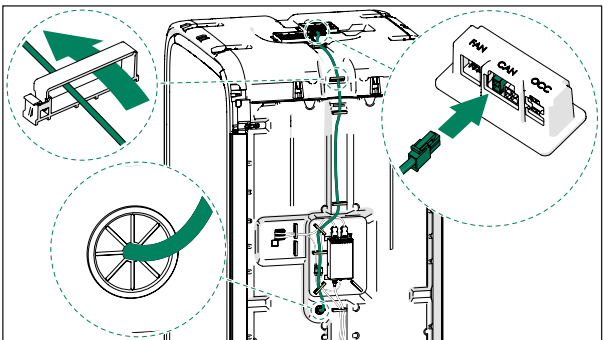
* = Optional LAN cable

Strain relief (roof), optional

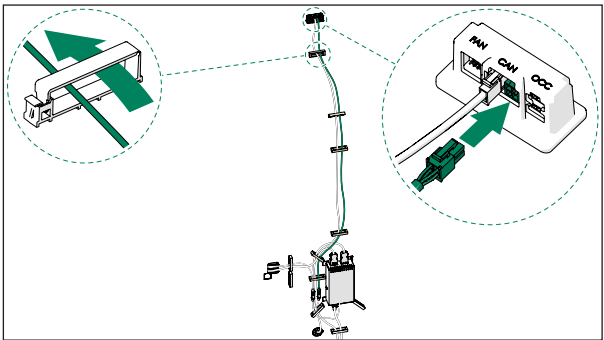


* = Optional LAN cable

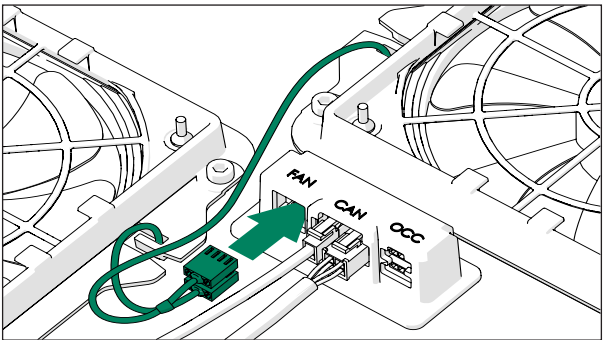
4.2 Wall light cable



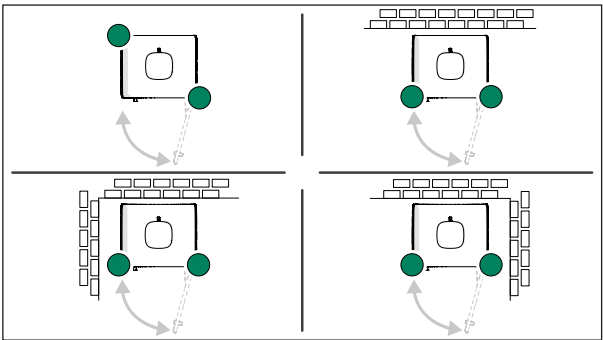
CAN cable



Fan cable

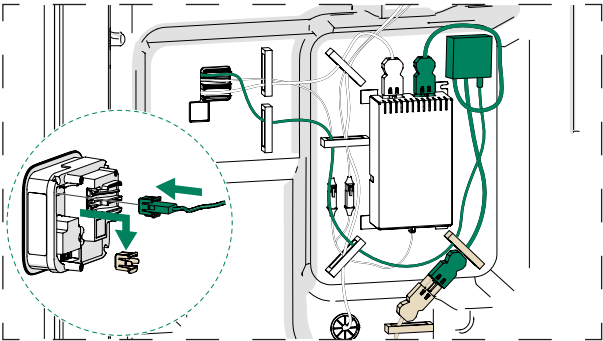
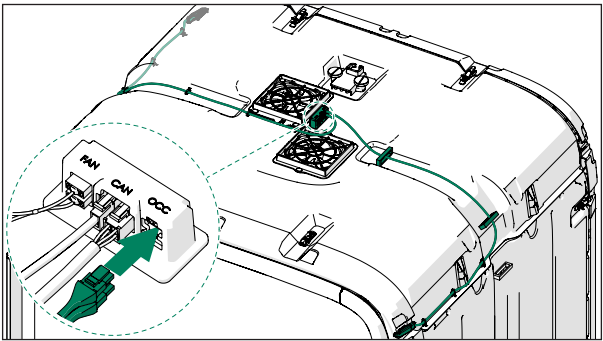
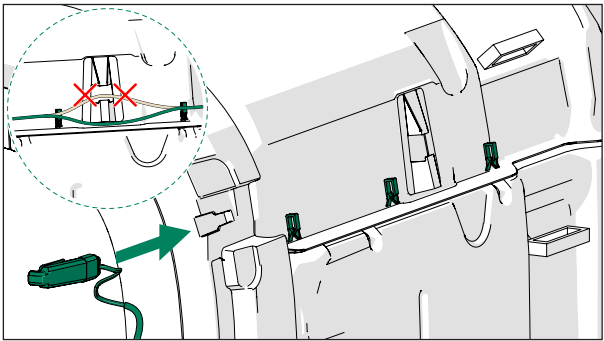


4.3 Occupancy lights



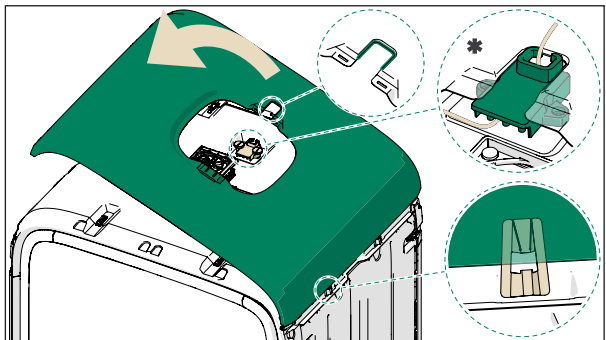
! Different options for the occupancy light locations.

USB-C module, optional



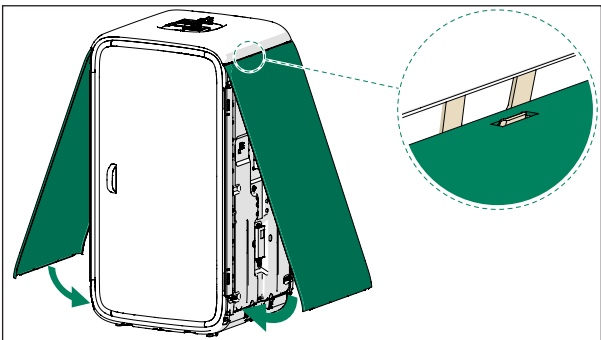
5. EXTERIOR

5.1 Roof exterior panel

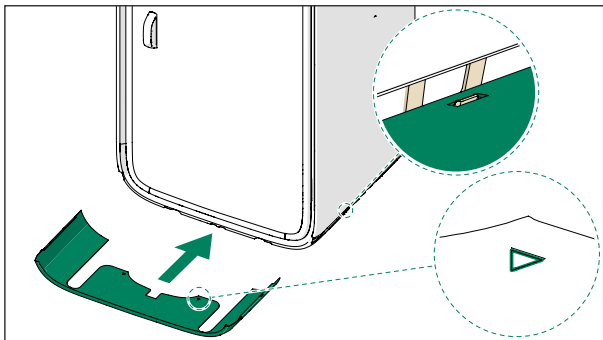


* = Power cord routed through the roof.

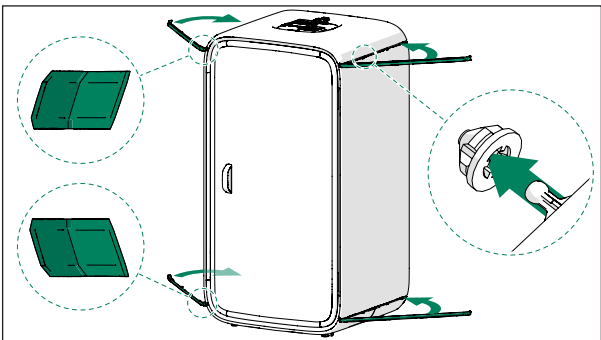
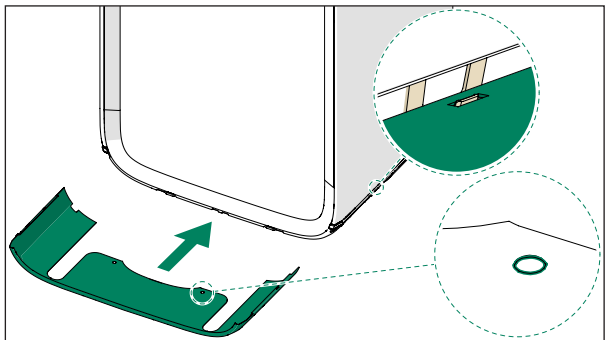
5.2 Wall exterior panels



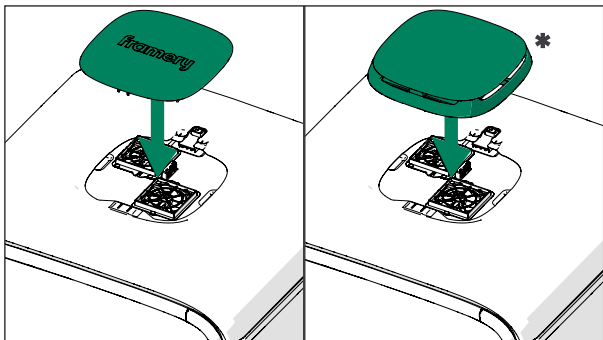
5.3 Floor exterior panels



5.4 Exterior trims



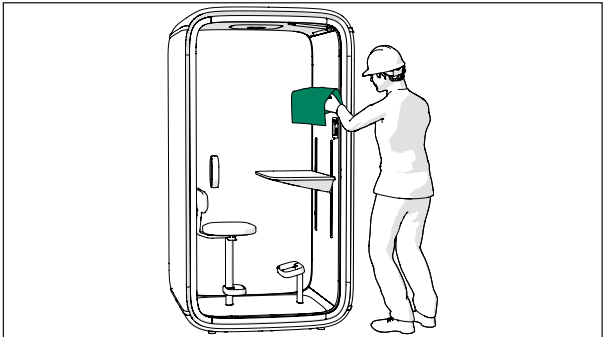
5.5 Fan cover



* = With the optional activated carbon filter.

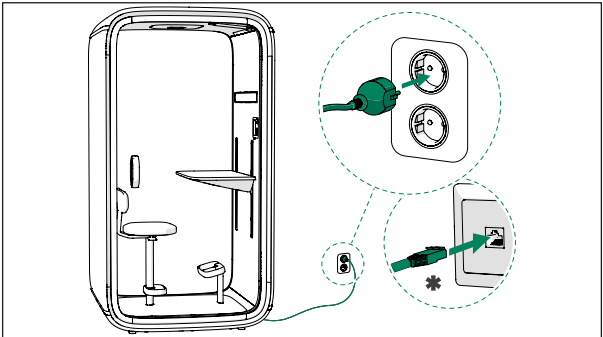
Finalize the installation

Clean the pod



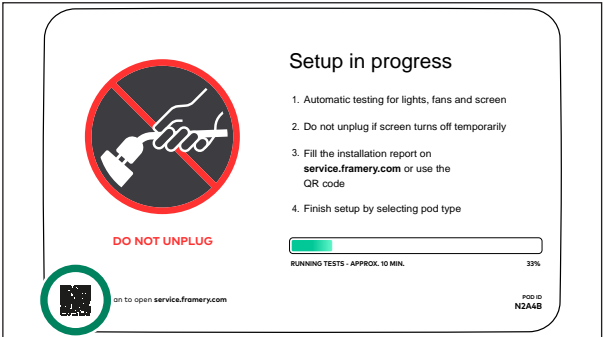
⚠ Remove the stickers on the door and back glass.

Connect the power cord



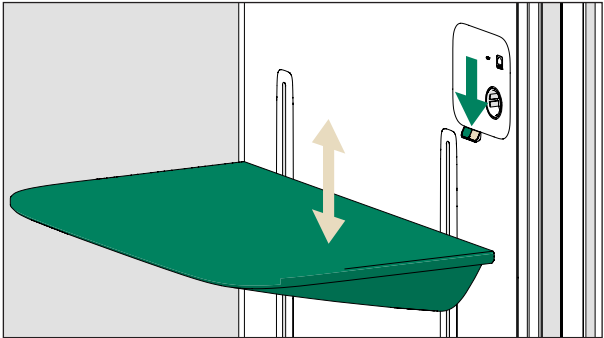
* = Optional LAN cable

Create an installation report



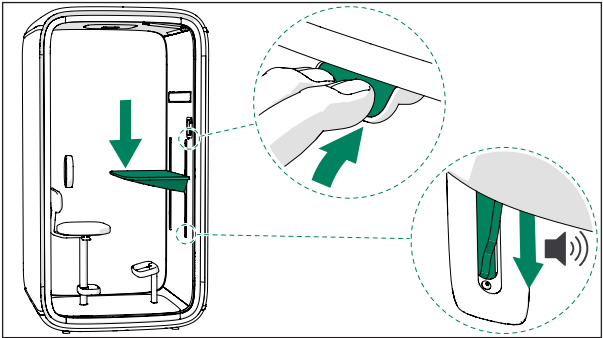
Scan the QR code on the touchscreen to open the installation report.

Test the table functionality



⚠ If the table does not move smoothly or to the maximum height, reset the table.

Reset the table



- ⚠ The table will move down during the setup procedure. Do not sit in the chair while performing the table setup.
- ⚠ Continuously press both buttons on the table handset until you hear an audible signal. When you hear the signal, the reset is completed and you can release the buttons.

