

Contents

1 Important safety and product instructions.....	5
1.1 Preface.....	5
1.2 Product information.....	5
1.3 Copyright.....	5
1.4 Manual contents.....	5
2 Connecting the power cord.....	6
3 Adjusting the chair.....	7
4 Main menu.....	8
4.1 Adjusting the lights.....	8
4.2 Adjusting the airflow.....	9
4.3 Extending the calendar reservation.....	9
4.4 Using the Be right back -function.....	10
5 Connecting electrical equipment.....	12

1 Important safety and product instructions

1.1 Preface

This instruction manual describes the use of the product. Everyone involved in using the product must read and understand the contents of the user and safety instructions.

This instruction manual gives you necessary information for the correct use.

For complete product and safety instructions, see help.frameryacoustics.com.

1.2 Product information

The information in this manual corresponds to the product at the time of delivery. All information included in this manual is valid at the time of publication.

1.3 Copyright

This document must not be copied, presented, or delivered to a third party without explicit permission from Framery. The use of this document for any purpose other than those allowed by Framery is prohibited. Framery reserves the right to change the instructions related to the product without separate notice.

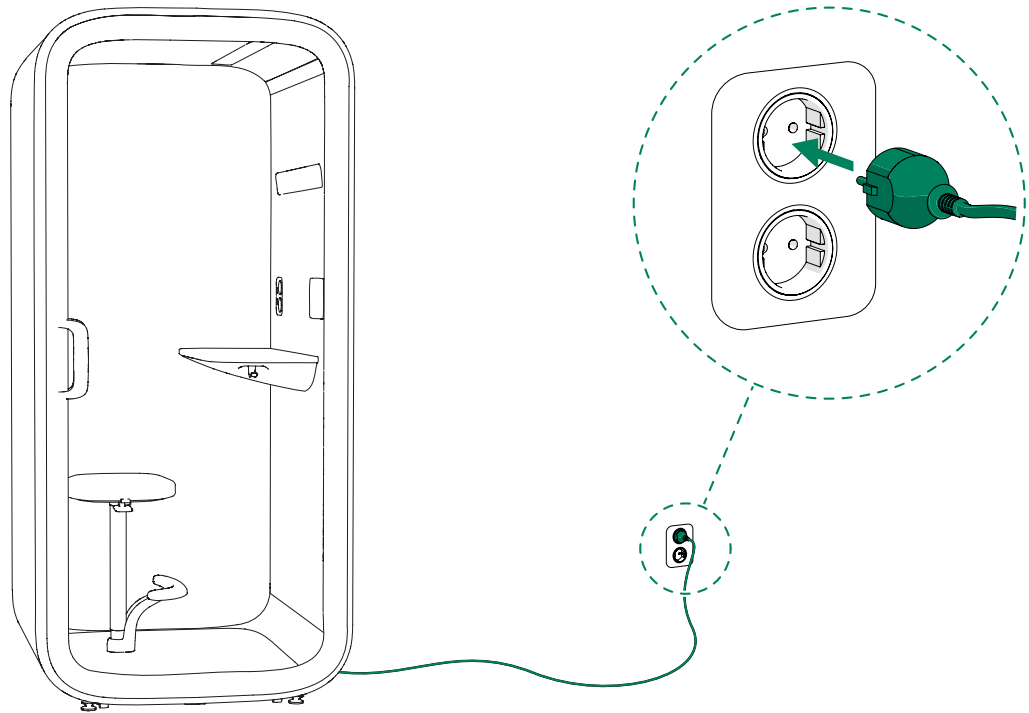
1.4 Manual contents

The user instructions contain the following information:

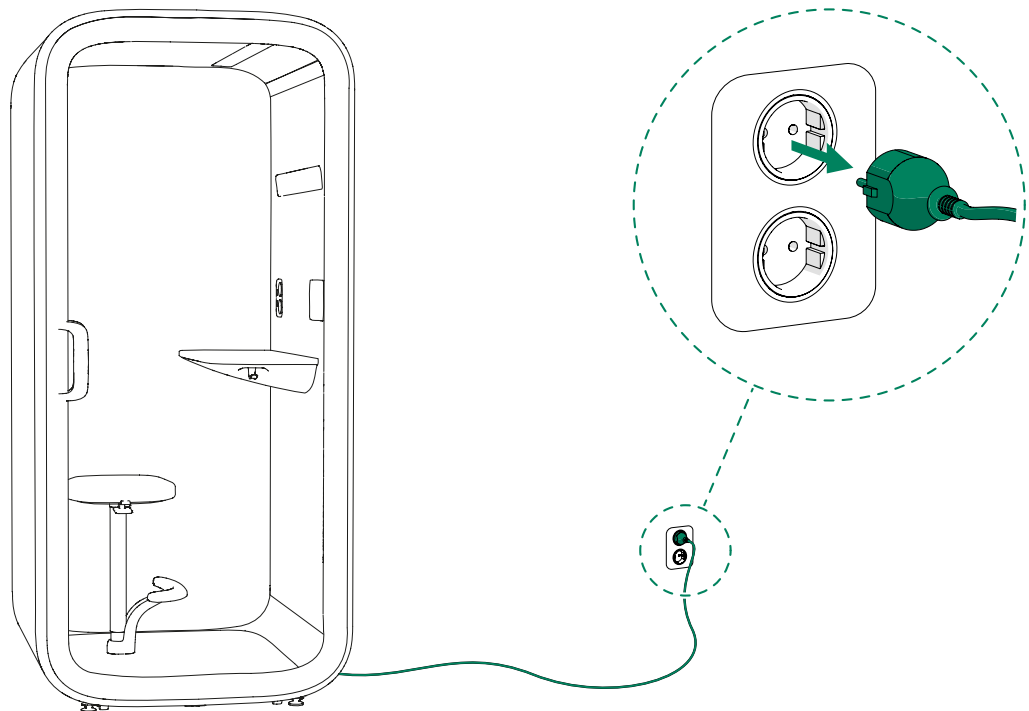
- General information about the purpose and content of the instructions
- Information related to safety
- User instructions

2 Connecting the power cord

1. To switch on the pod electrics, connect the pod power cord to a power outlet.

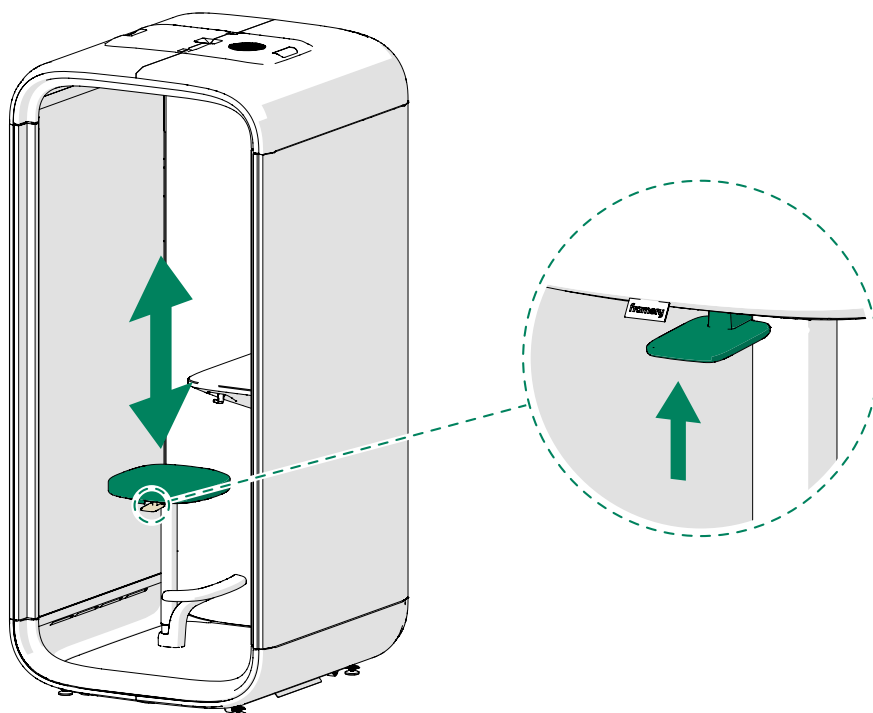


2. To switch off the pod electrics, disconnect the pod power cord from the power outlet.



3 Adjusting the chair

1. Sit on the chair to determine the possible need for adjustments.
2. To adjust to a lower position, gently pull up on the lever at the side until the correct height is reached.
3. To adjust to a higher position, lighten your weight off the seat and gently pull the lever at the side until the correct height is reached.



4 Main menu

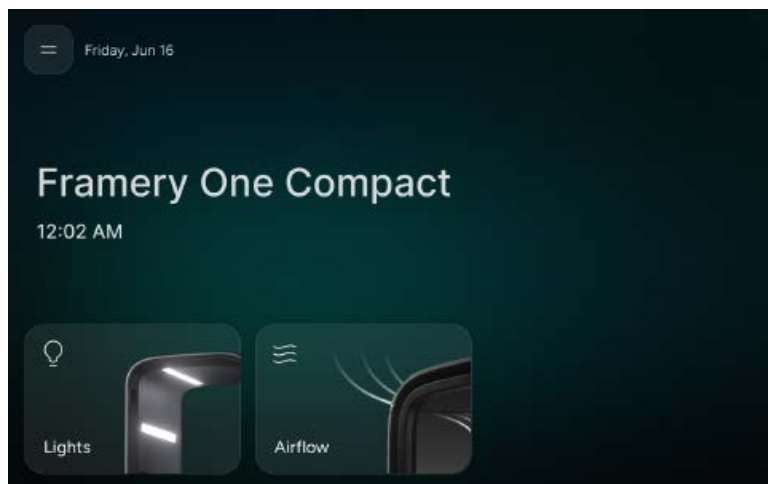


Figure 1: User interface of the pod

4.1 Adjusting the lights

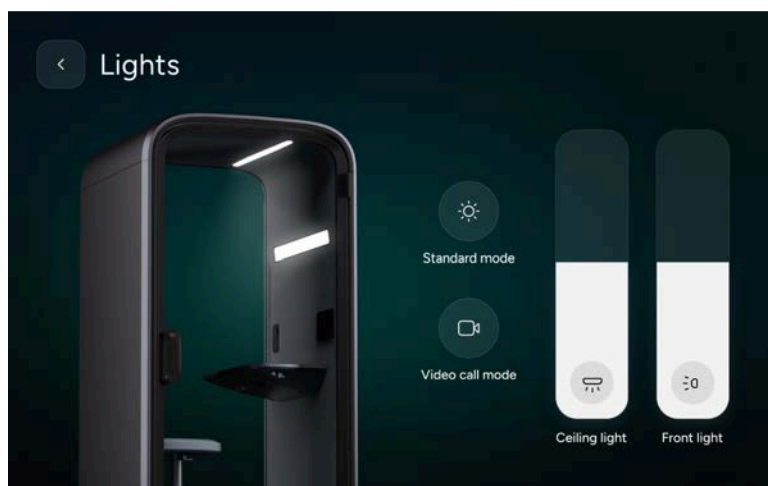


Figure 2: Adjusting the lights

1. Press the **Lights** button on the main menu of the touch screen.
2. Select **Standard mode** or **Video call mode** .
The lights are automatically adjusted to a brightness suitable for either working in the pod or video conferencing.
3. To manually adjust the lights, slide the level line up (brighter) or down (less bright).
The brightness of the ceiling light and front light can be adjusted independently.
4. To return to the main menu, press the arrow < button in the upper left corner of the touch screen.

4.2 Adjusting the airflow

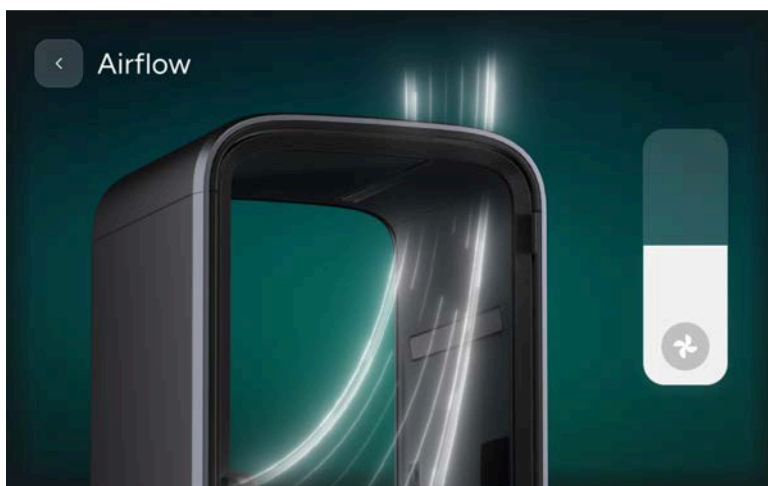


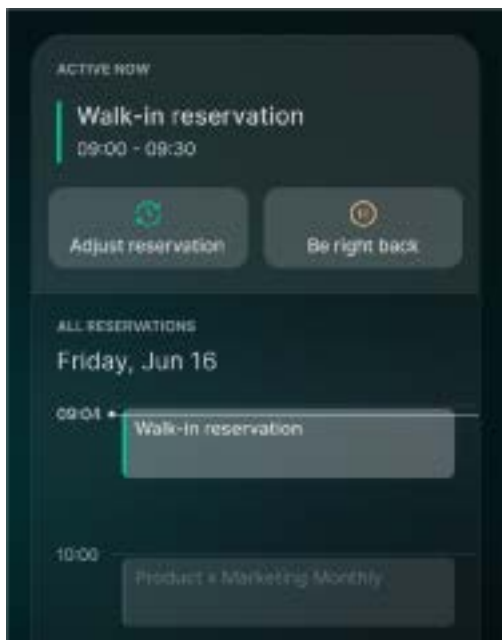
Figure 3: Adjusting the airflow

1. Press the **Airflow** button on the main menu of the touch screen.
2. To adjust the level of ventilation, slide the level line up (more ventilation) or down (less ventilation).
3. To return to the main menu, press the arrow < button in the upper left corner of the touch screen.

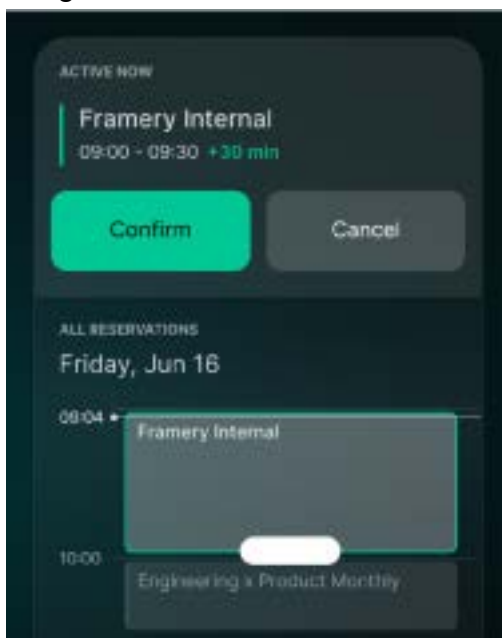
4.3 Extending the calendar reservation

When you enter the pod, the pod is automatically reserved for you for the next 30 minutes.

1. To extend the walk-in reservation or other calendar reservation, do either of the following:
 - Press **Adjust reservation**. The reservation will be extended by 15 minutes.



- Drag down on the event in the calendar.

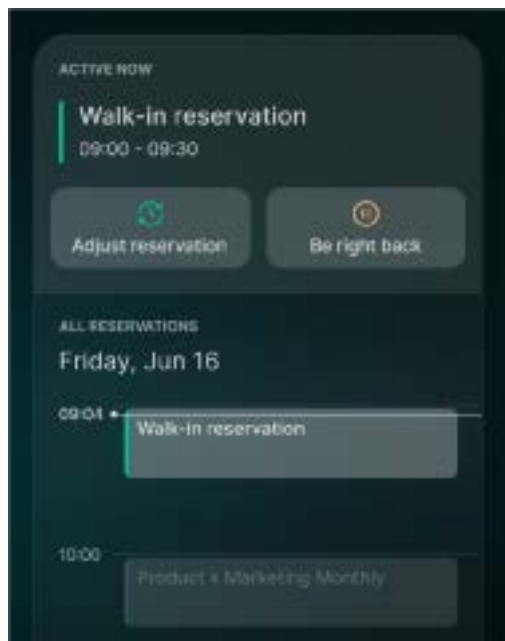


2. Press **Confirm**.

4.4 Using the Be right back -function

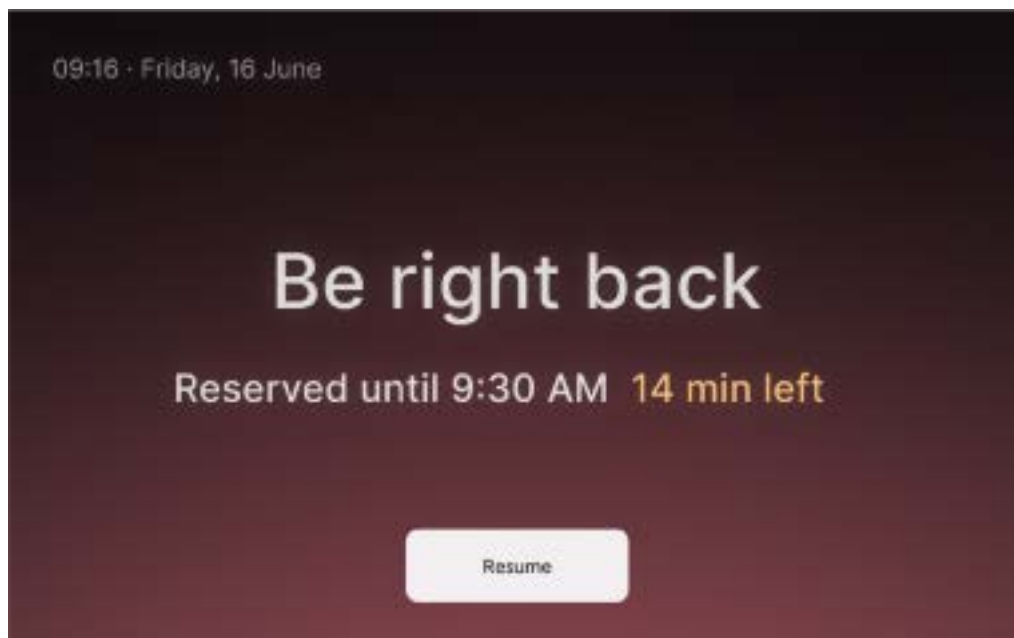
If you want to leave the pod for a short while without losing the reservation, you can use the Be right back -function.

1. Press **Be right back**.



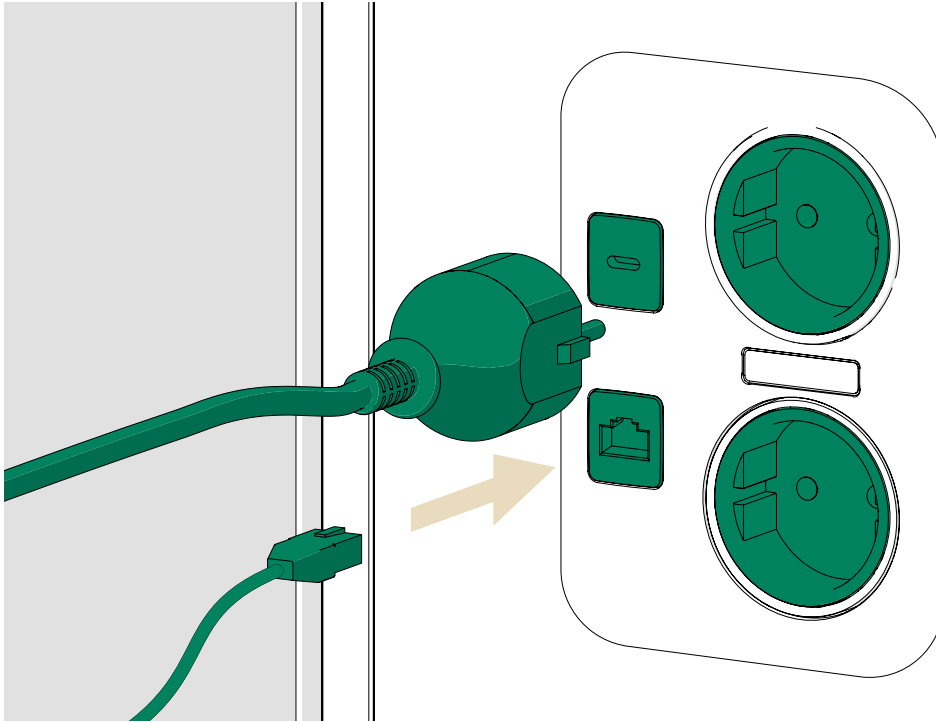
The pod is reserved for you until the end of the reservation even if you step out of the pod.

2. When you re-enter the pod, press **Resume**.



5 Connecting electrical equipment

To connect your device to the power socket, USB-C connector (optional), or LAN connector (optional), connect one end of the cord in question to your device and insert the other end to the corresponding outlet on the techwall.



framery

Framery One Compact

User instructions

Patamäenkatu 7

33900 Tampere

FINLAND

VAT: FI 23527139