

Framery One Compact  
Seismic kit retrofit installation  
instructions

English  
Version 1.0  
Tampere, Finland 13.11.2024



# Contents

<b>1 Important safety and product instructions.....</b>	<b>5</b>
1.1 Preface.....	5
1.2 Product information.....	5
1.3 Copyright.....	5
1.4 Manual contents.....	5
<b>2 Seismic anchoring requirements.....</b>	<b>6</b>
<b>3 Disassemble the necessary parts.....</b>	<b>7</b>
3.1 Remove the roof exterior panels.....	7
3.2 Remove the bottom exterior panels.....	7
3.3 Remove the wall exterior panels.....	8
3.4 Remove the acoustic panels.....	8
3.5 Remove the carpet.....	10
3.6 Remove the floor cover plates.....	10
3.7 Remove the kickboards.....	11
<b>4 Install the frame supports.....</b>	<b>13</b>
<b>5 Anchor the pod.....</b>	<b>16</b>
<b>6 Install the kickboards.....</b>	<b>17</b>
<b>7 Tighten the frame connections.....</b>	<b>19</b>



# 1 Important safety and product instructions

## 1.1 Preface

This instruction manual describes the installation of the product. Everyone involved in installing the product must read and understand the contents of the installation and safety instructions.

This instruction manual gives you necessary information for the correct installation of the product.

For complete product and safety instructions, see **help.framery.com**.

## 1.2 Product information

The information in this manual corresponds to the product at the time of delivery. All information included in this manual is valid at the time of publication.

## 1.3 Copyright

This document must not be copied, presented, or delivered to a third party without explicit permission from Framery. The use of this document for any purpose other than those allowed by Framery is prohibited. Framery reserves the right to change the instructions related to the product without separate notice.

## 1.4 Manual contents

The installation instructions contain the following information:

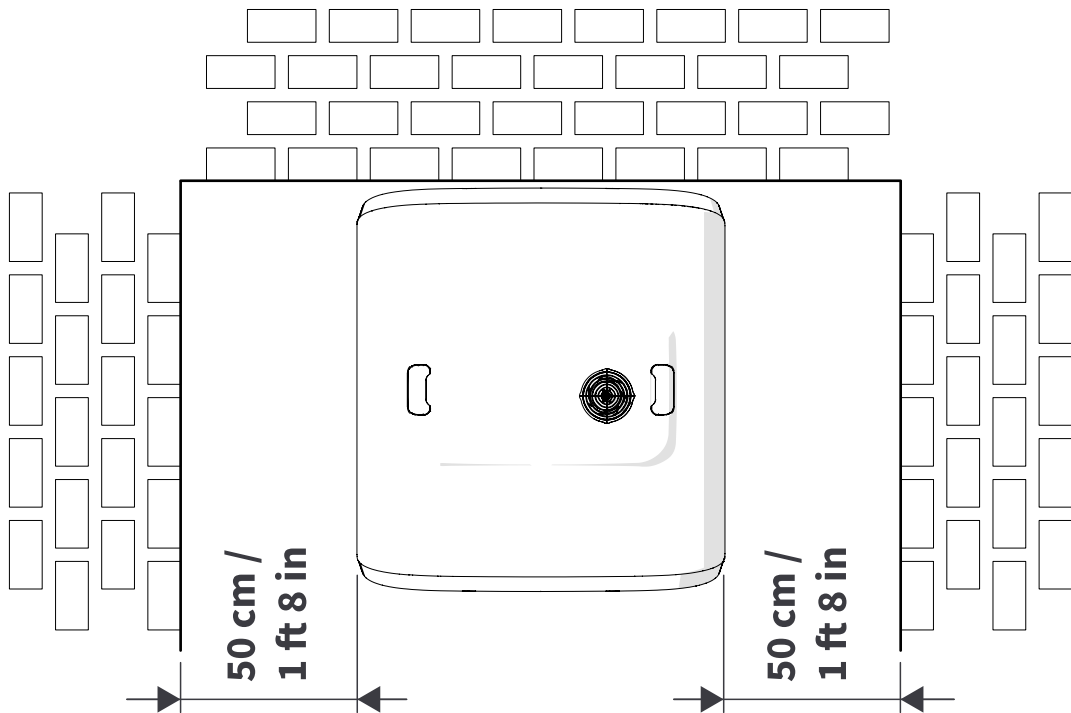
- General information about the purpose and content of the instructions
- Information related to safety
- Installation instructions

## 2 Seismic anchoring requirements

**Note:** When installing the product, take into consideration all local laws, rules and regulations concerning seismic anchoring and seismic safety.

For installations in the U.S., in buildings located in Seismic Design Categories A and B, anchoring to the floor is optional. In buildings located in Seismic Design Categories C, D, E or F, anchoring to the floor is required.

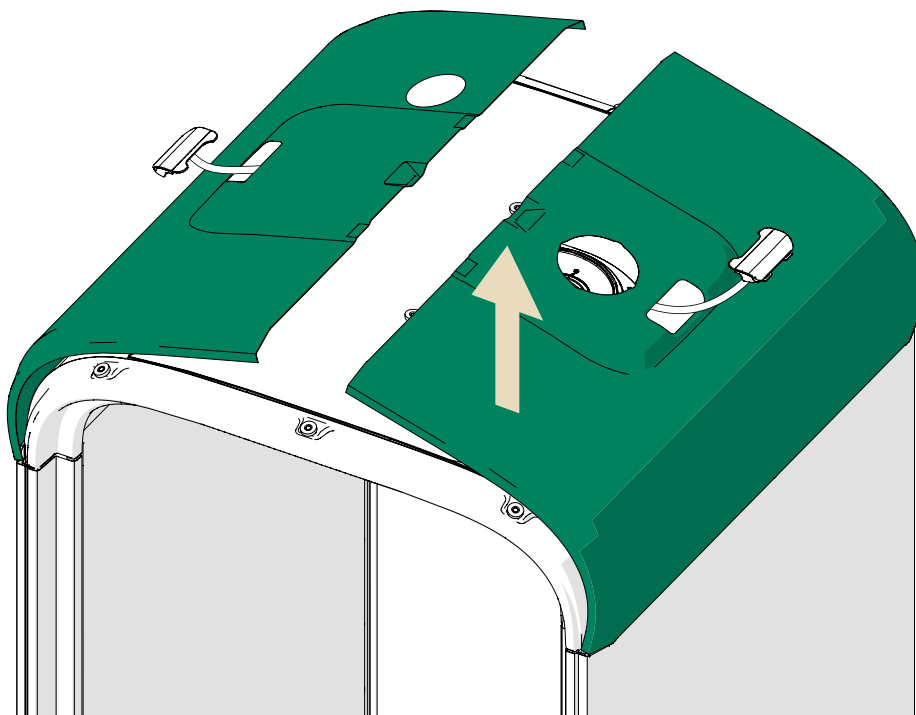
When anchoring to the floor, plans that address seismic design categories must be prepared by a registered design professional. The plans are to include definitions on the type, size and location of anchors and installation limitations. Additionally, installation must be in accordance with the applicable codes [IBC, IFC, IMC, NFPA 70 and, when installed with a sprinkler, NFPA 13].



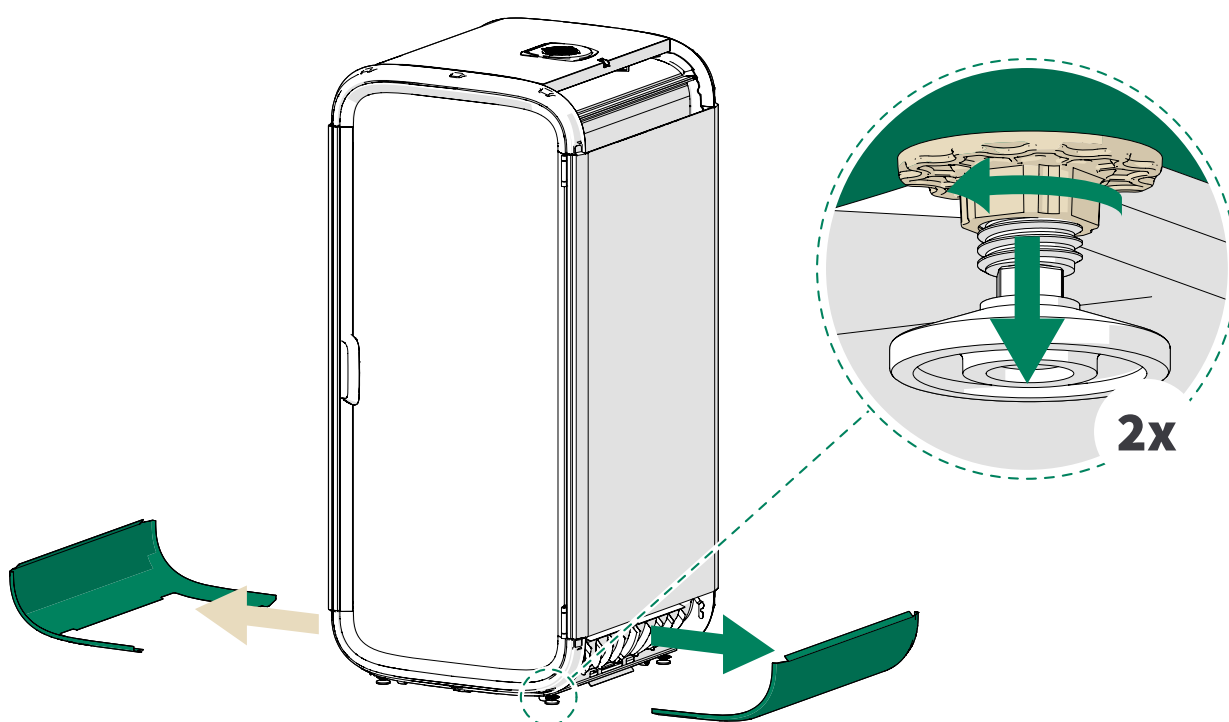
**Figure 1: Required operating space when installing seismic anchoring**

### 3 Disassemble the necessary parts

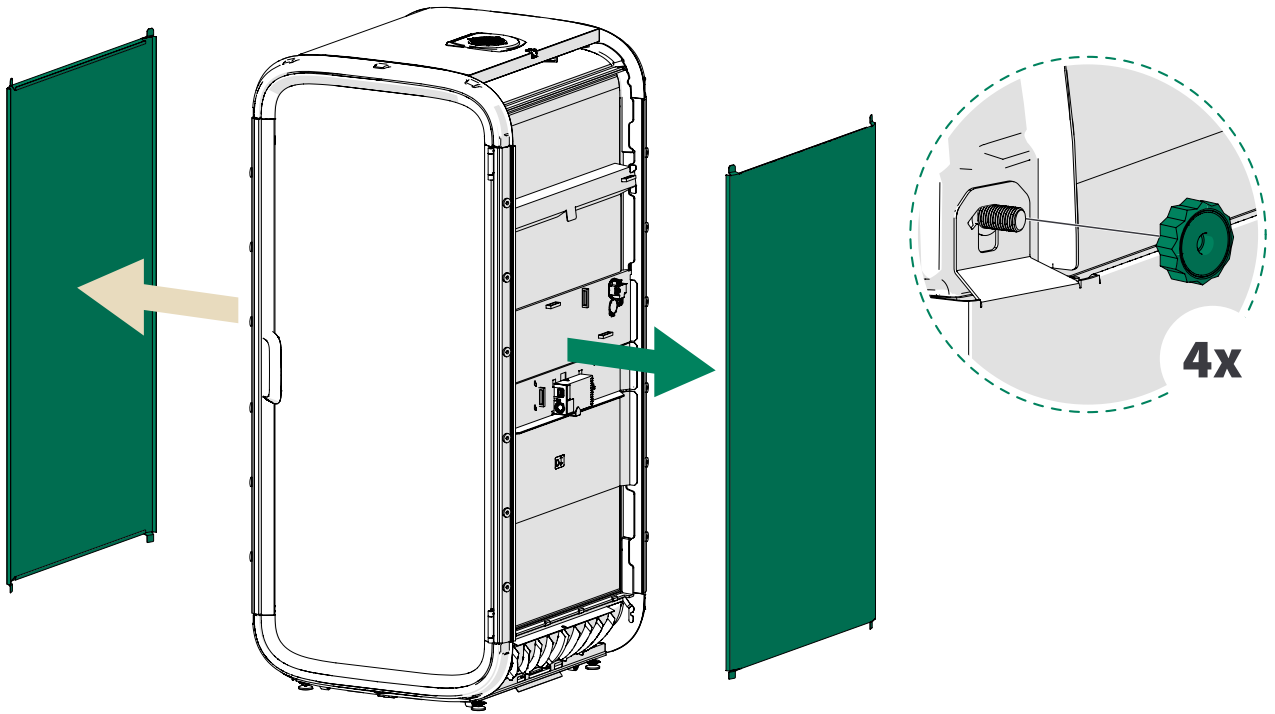
#### 3.1 Remove the roof exterior panels



#### 3.2 Remove the bottom exterior panels

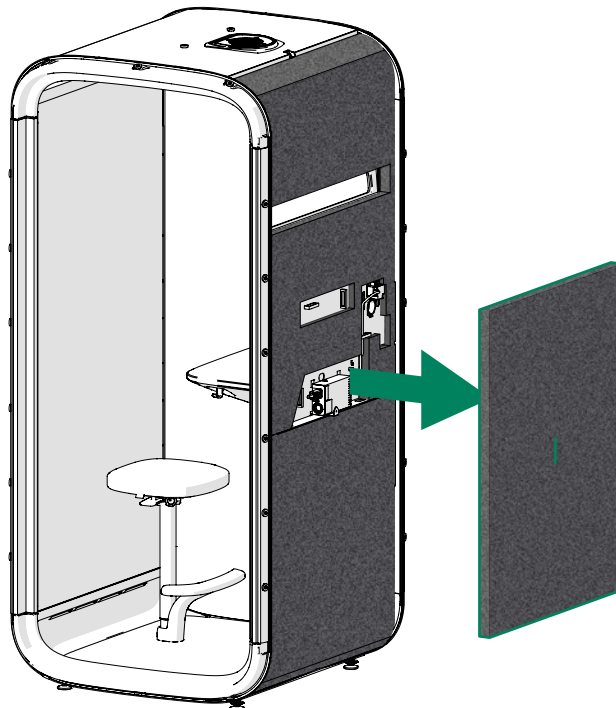


### 3.3 Remove the wall exterior panels



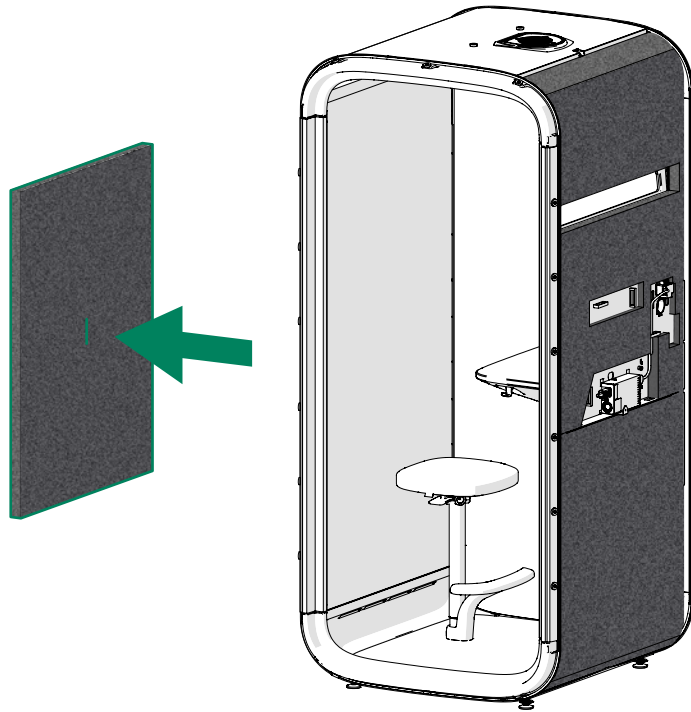
### 3.4 Remove the acoustic panels

1.

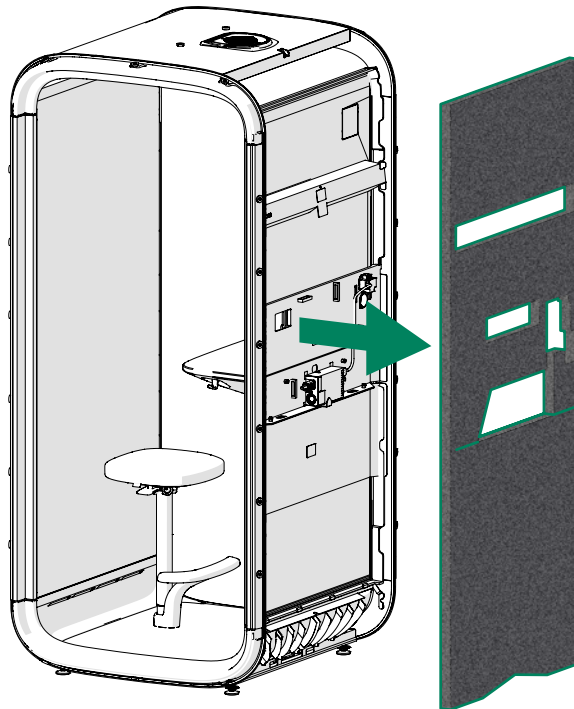




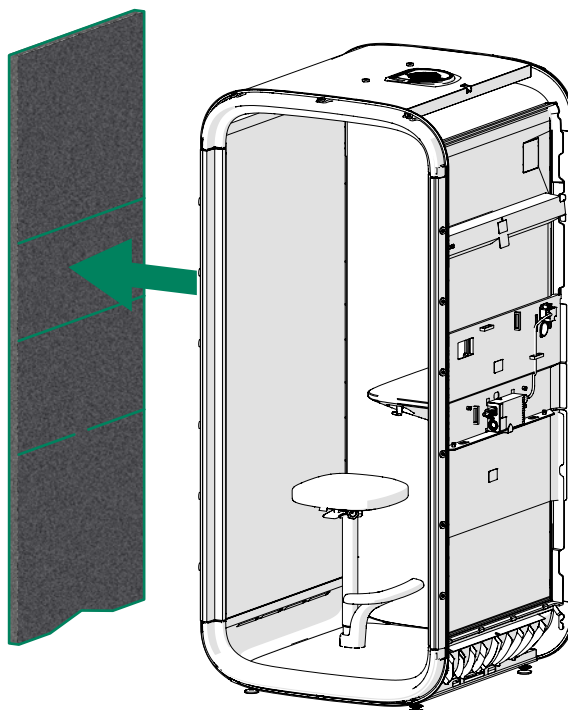
2.



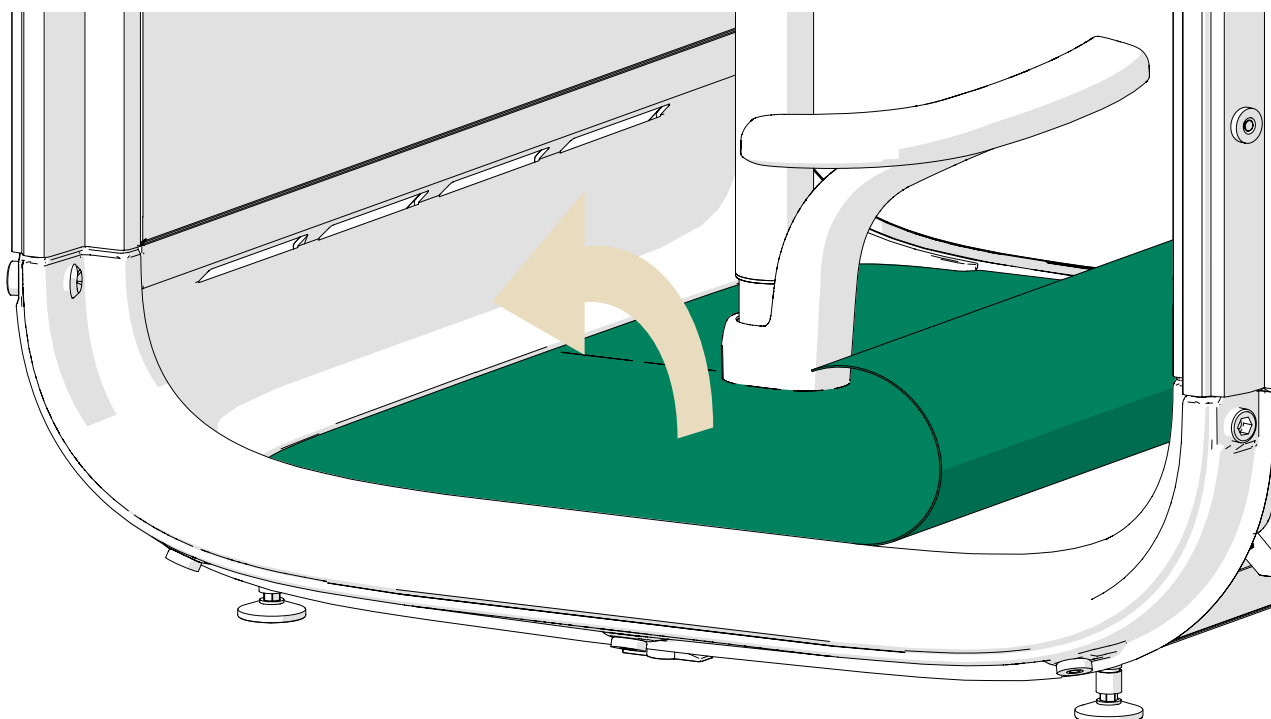
3.



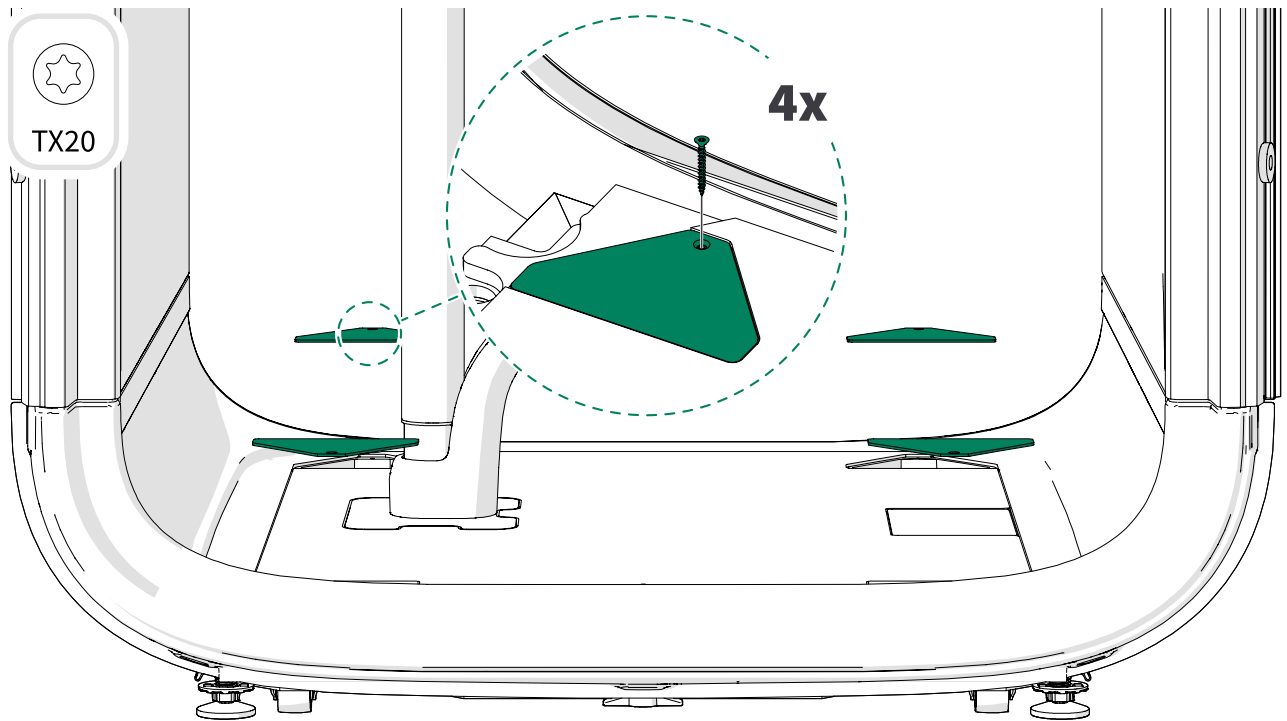
4.



### 3.5 Remove the carpet

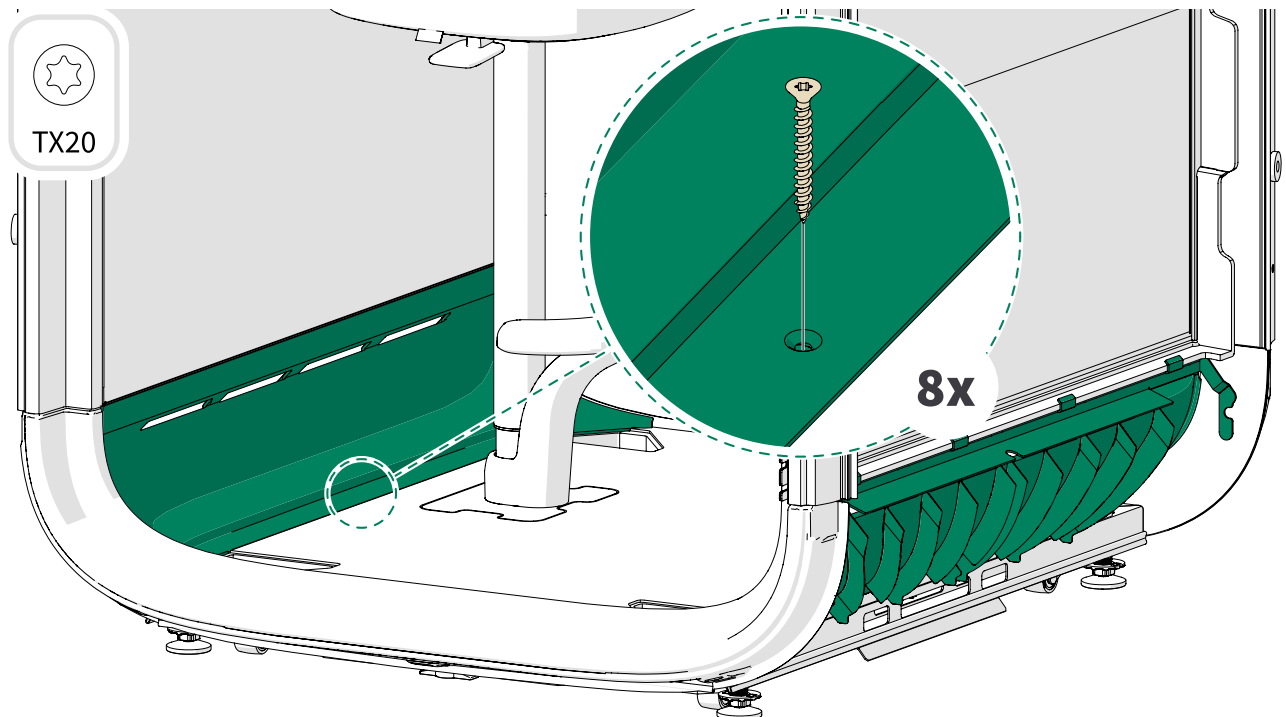


### 3.6 Remove the floor cover plates

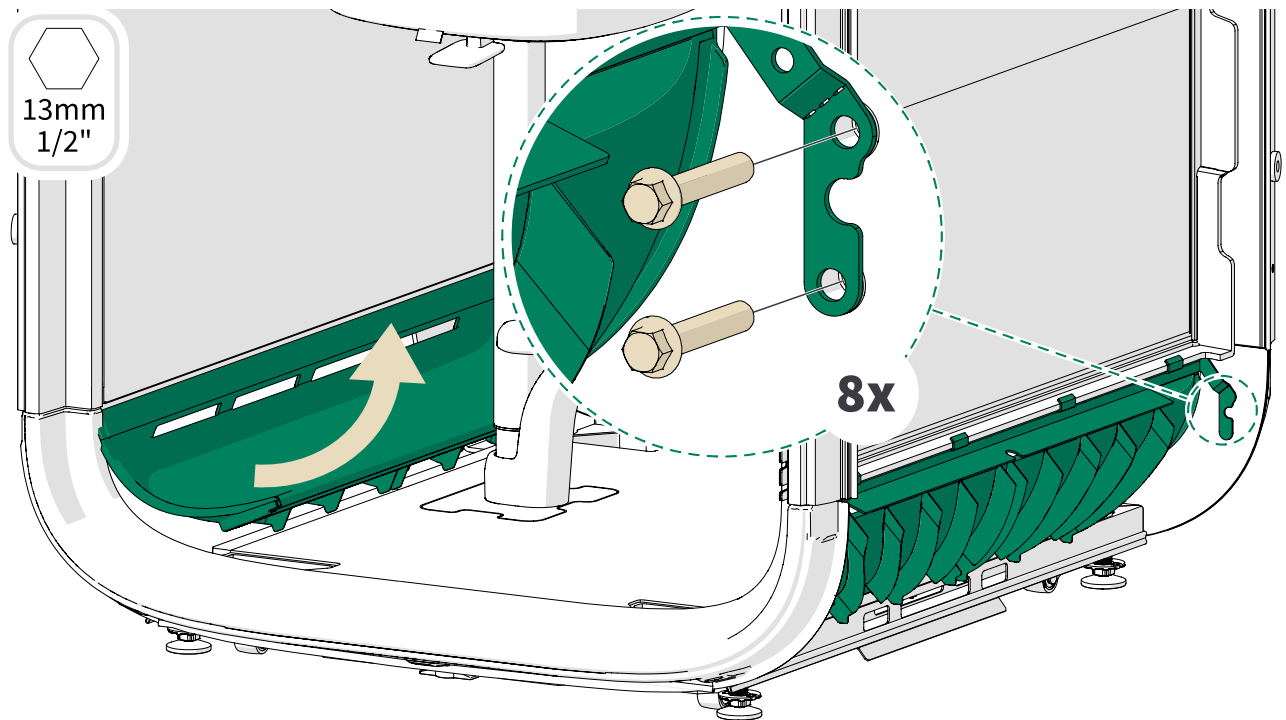


### 3.7 Remove the kickboards

1.

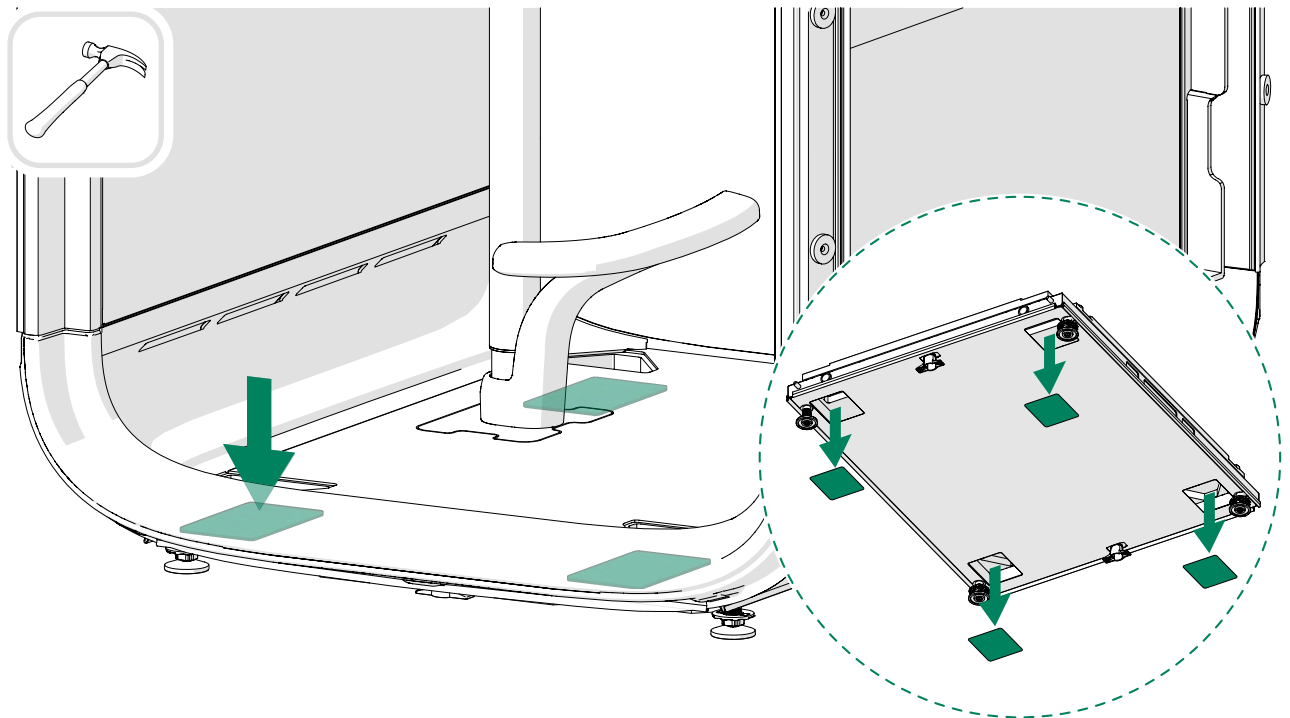


2. The bolts can be discarded.



## 4 Install the frame supports

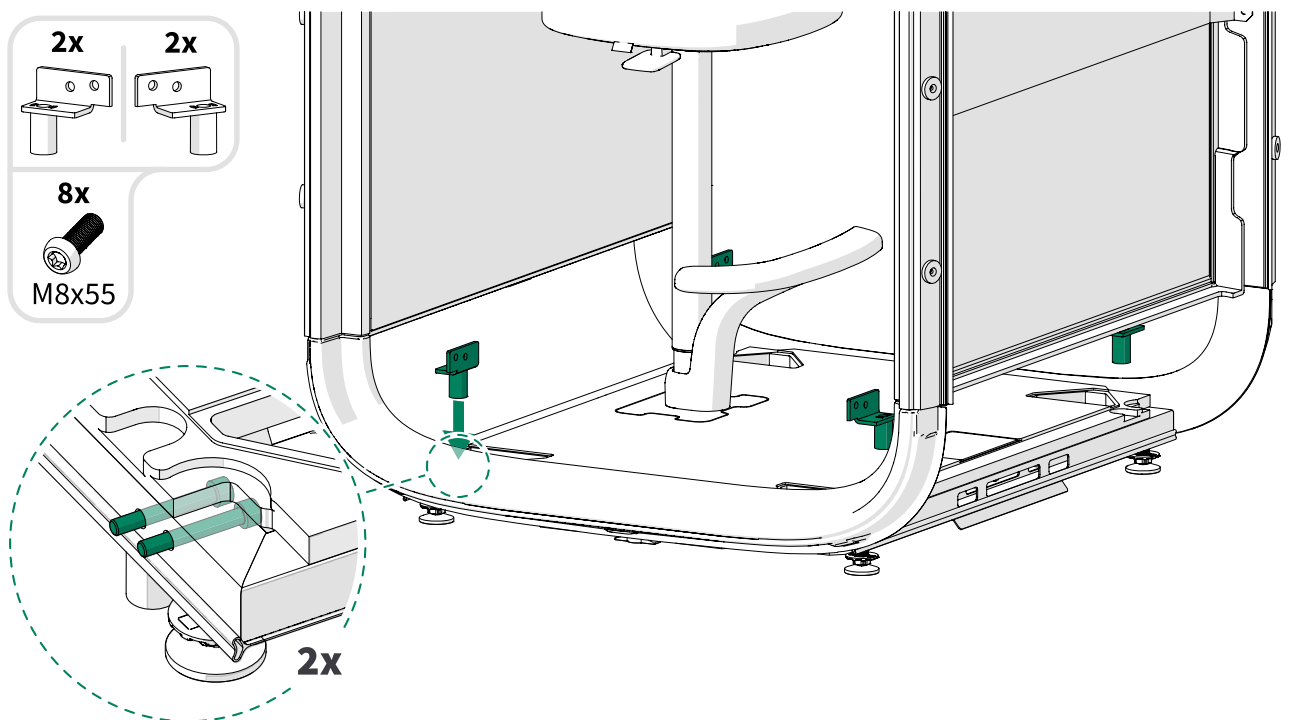
1.



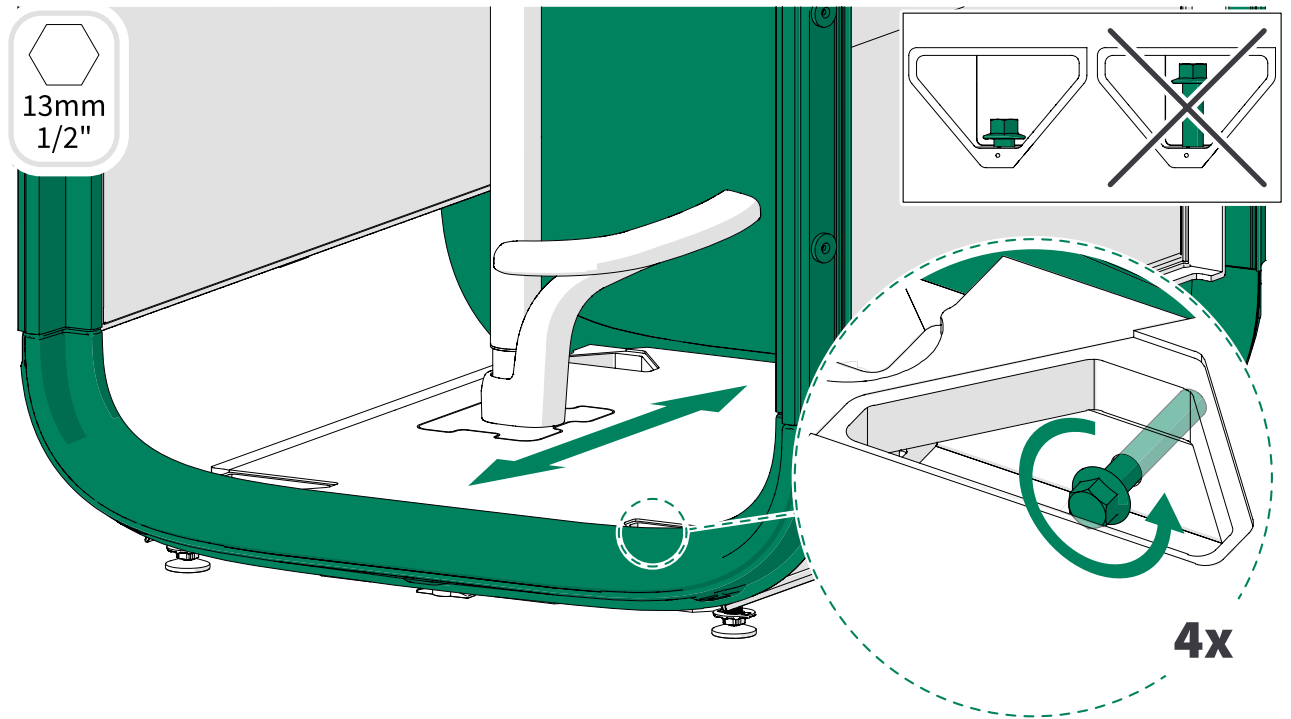
2.



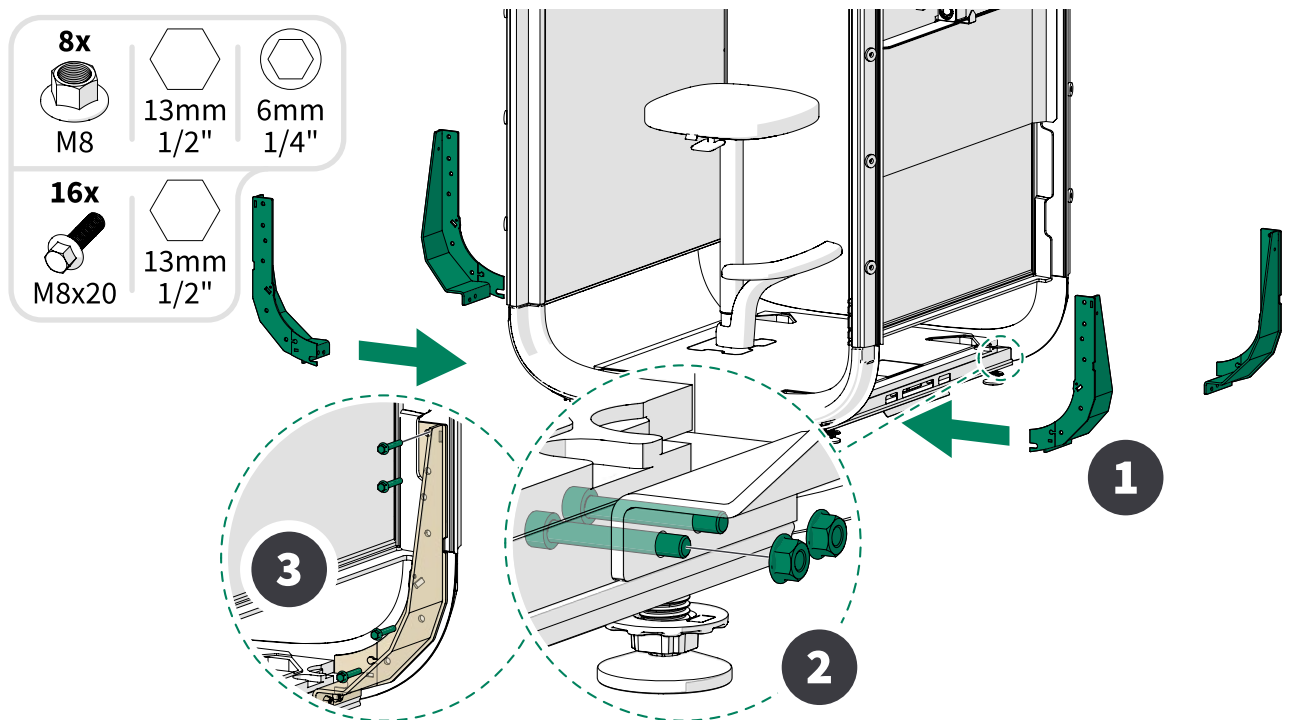
**Note:** Make sure that you install the floor supports in the correct corners. The holes on the floor support must be aligned with the holes on the side of the floor module.



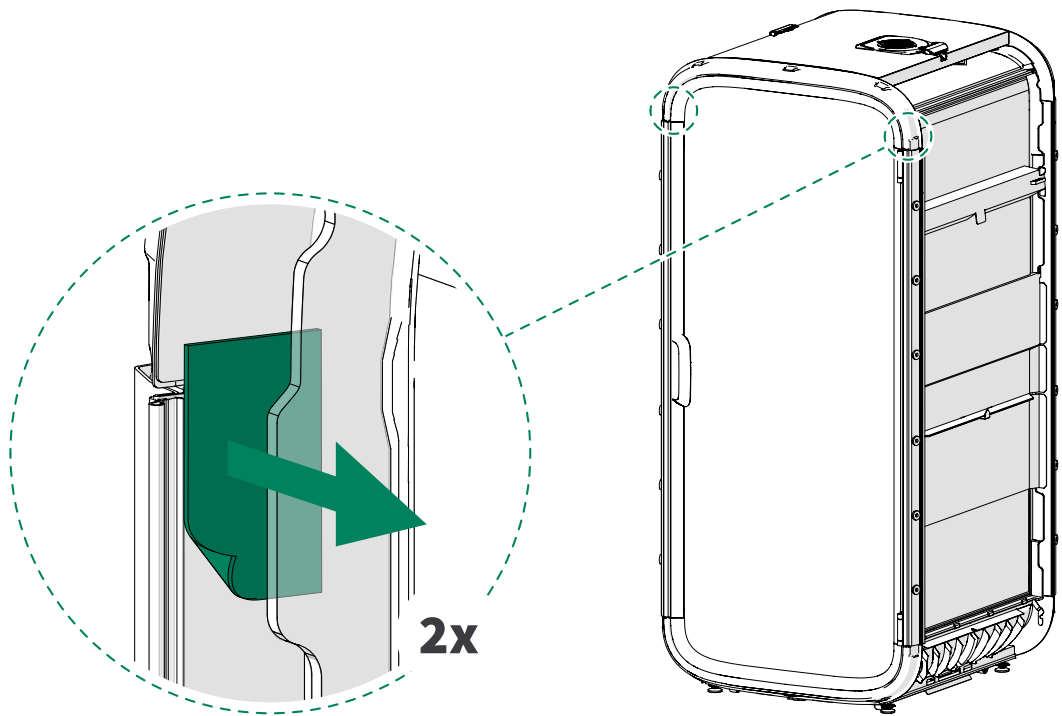
3.



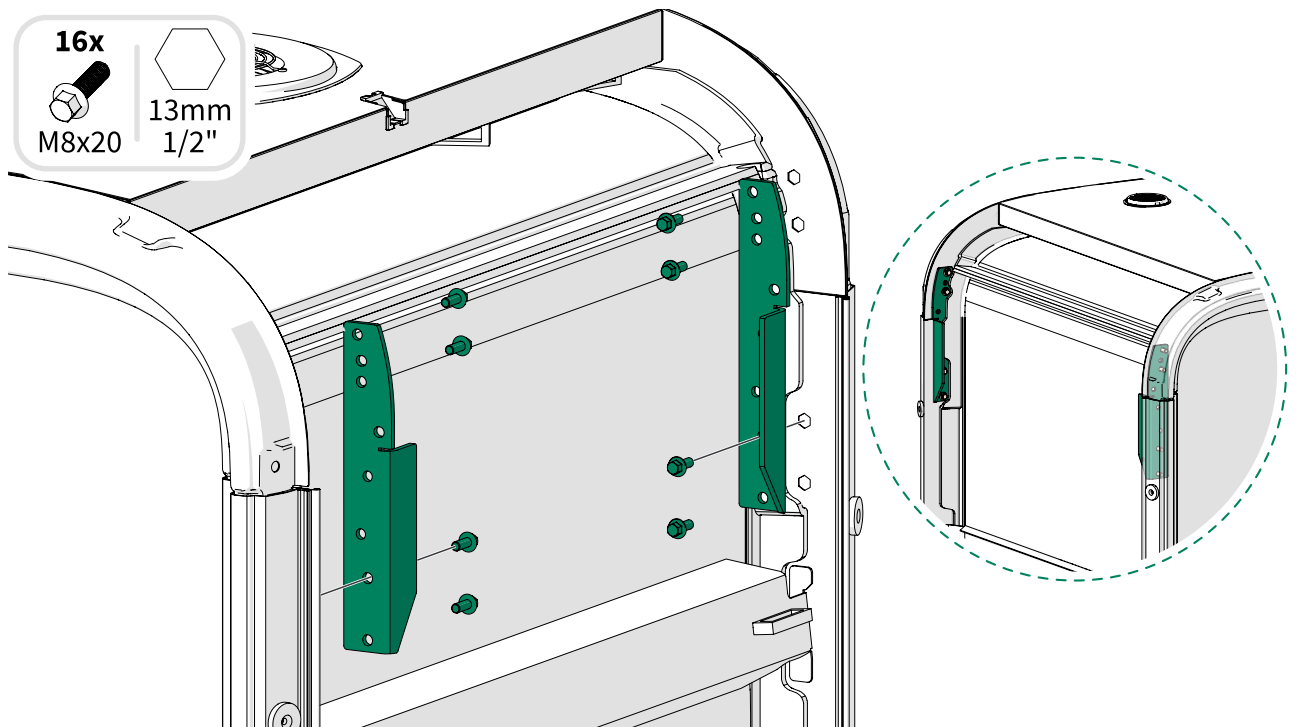
4.



5.



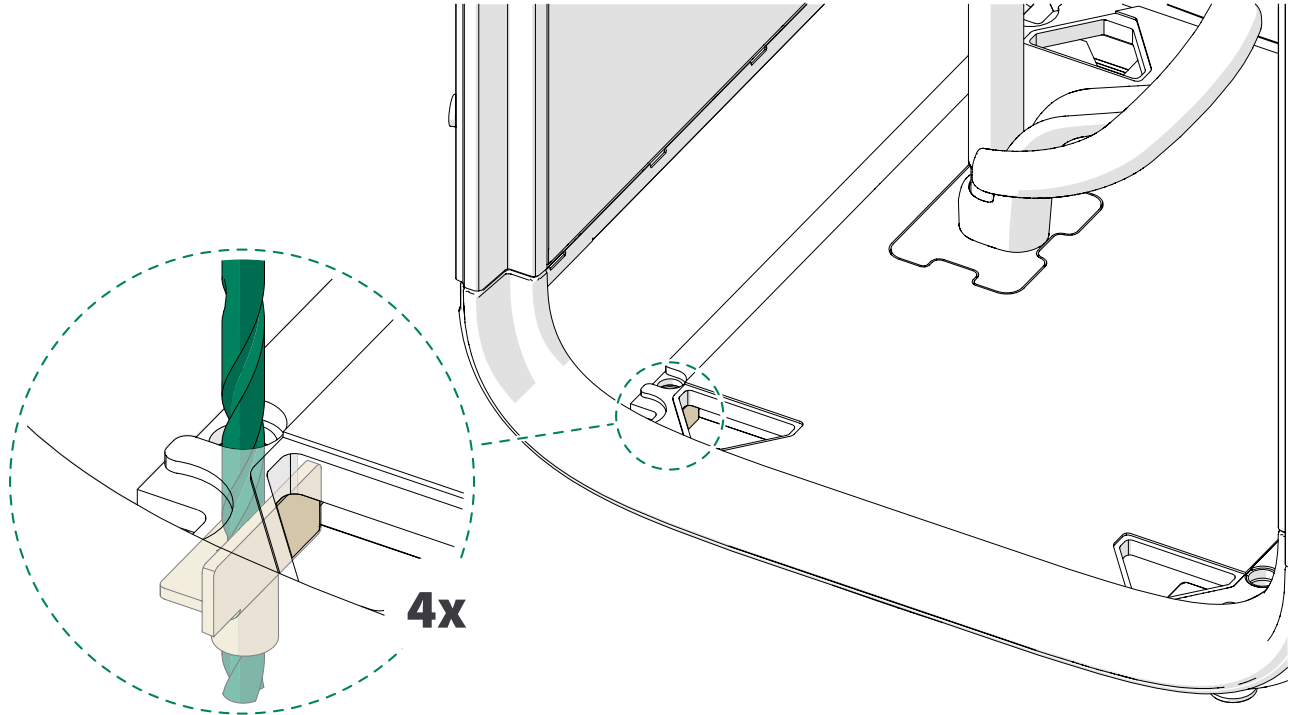
6.



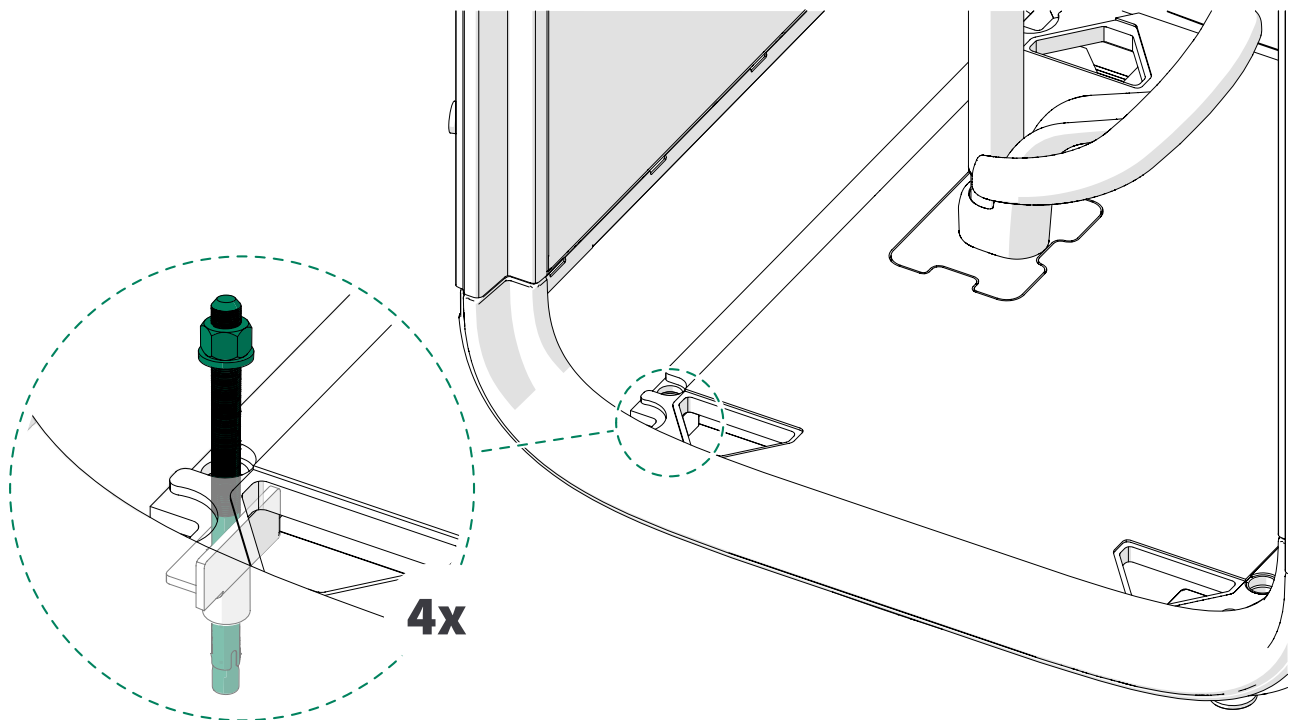
## 5 Anchor the pod

⚠ **Note:** The type and size of anchors must be defined by a registered design professional.

1. Drill holes for the anchors.



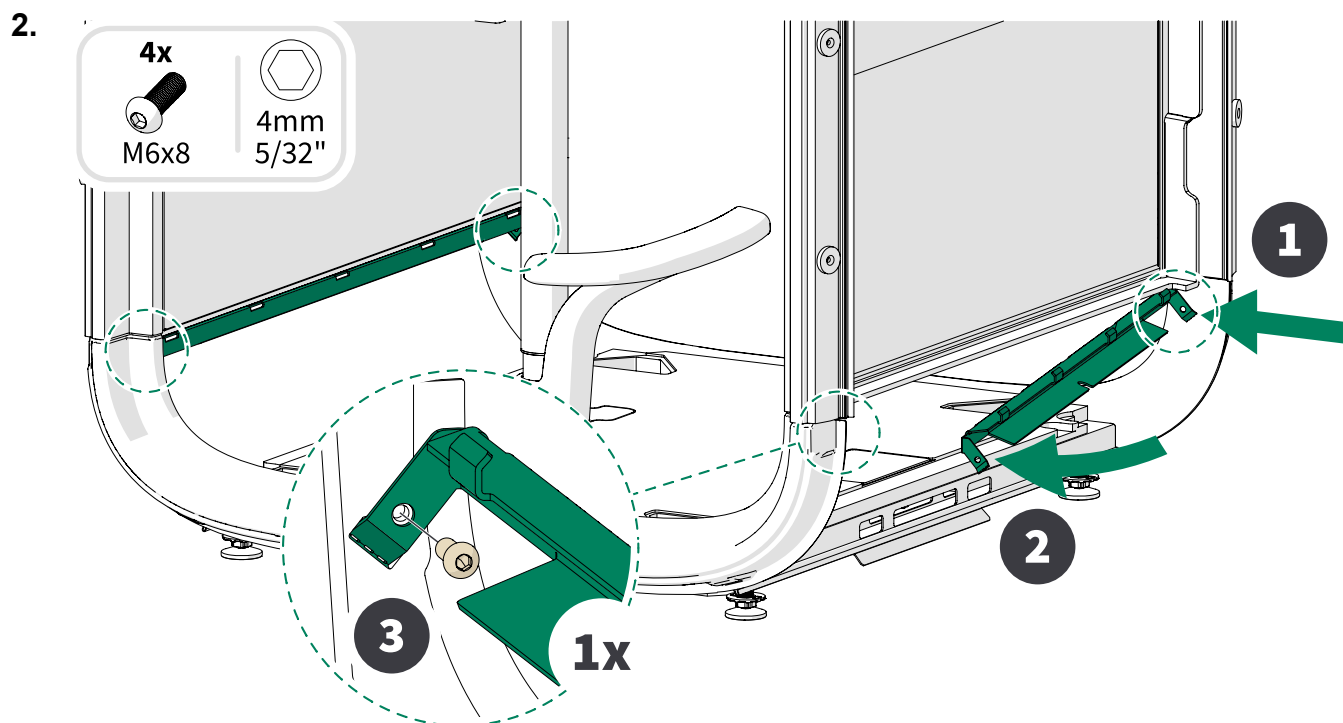
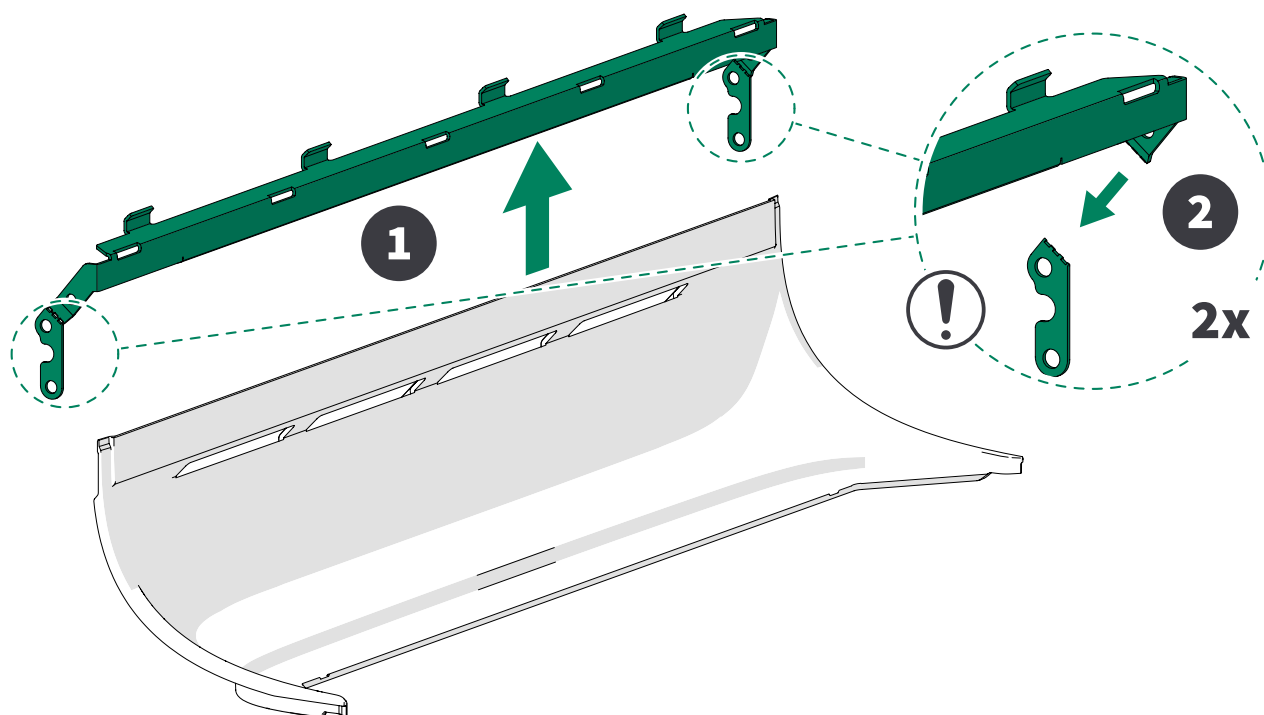
2. Install the anchors.



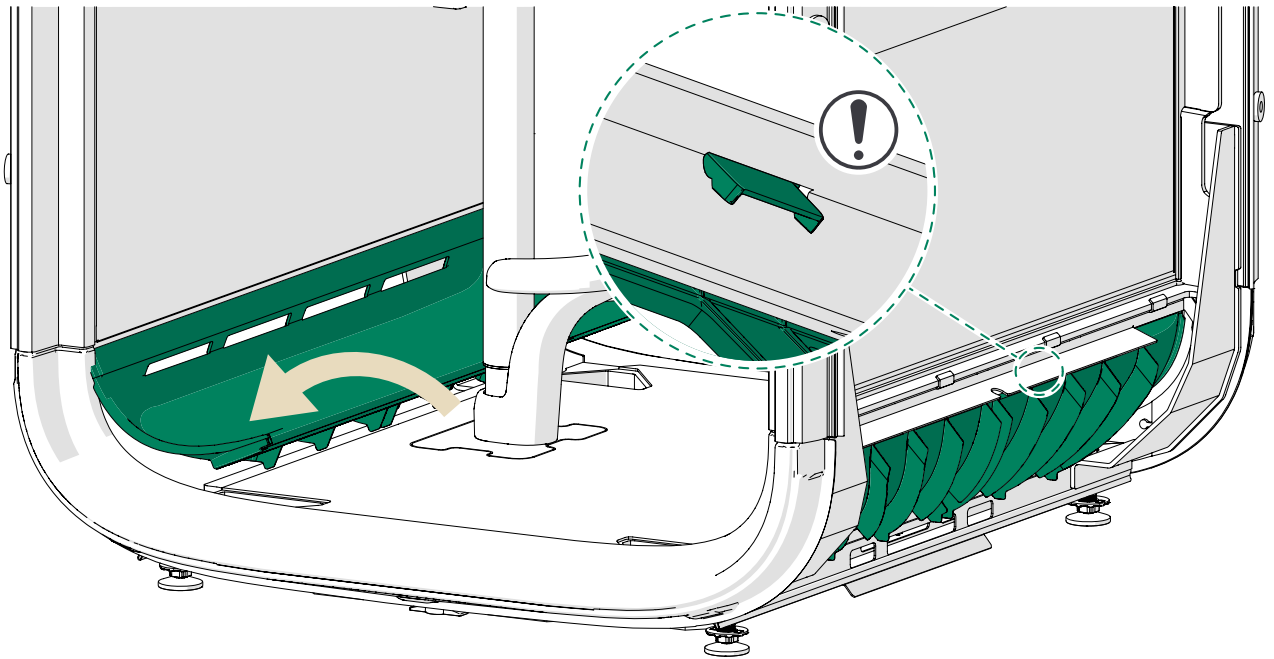


## 6 Install the kickboards

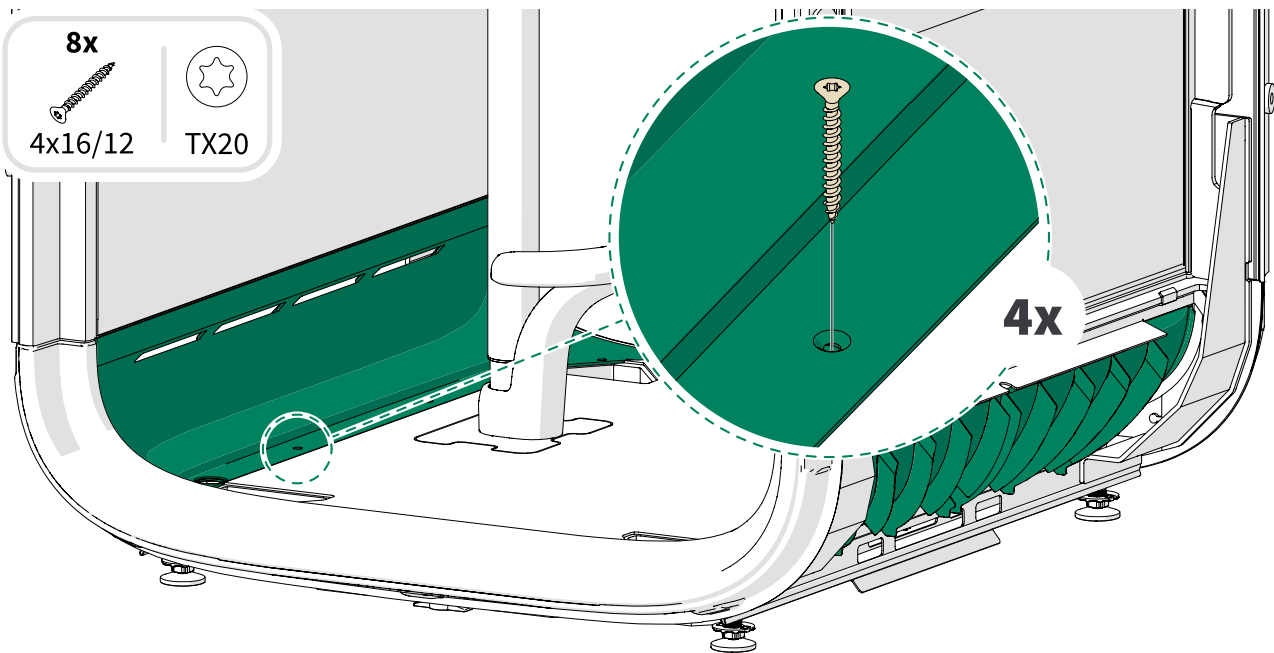
1.  **Note:** Do the following steps on both sides of the pod.



3.

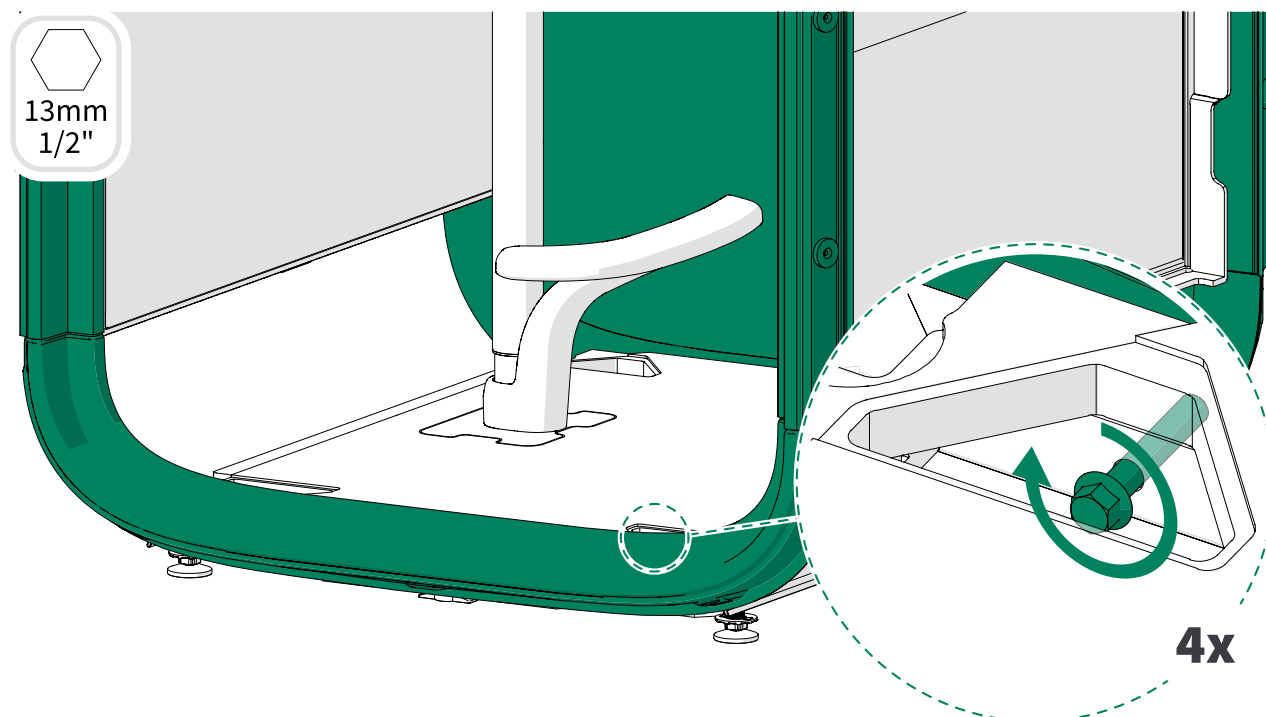


4.



## 7 Tighten the frame connections

1.



2. Install the removed parts in the reverse order.





**framery**

Framery One Compact  
Seismic kit retrofit installation instructions  
Patamäenkatu 7  
33900 Tampere  
FINLAND  
VAT: FI 23527139