

Framery One Compact

Moving the pod

English

Version 1.0

Tampere, Finland 20.6.2024



# Contents

<b>1 Important safety and product instructions.....</b>	<b>5</b>
1.1 Preface.....	5
1.2 Product information.....	5
1.3 Copyright.....	5
1.4 Manual contents.....	5
 <b>2 Moving the product on casters (optional).....</b>	<b>6</b>
 <b>3 Move the pod.....</b>	<b>7</b>
 <b>4 Level the pod.....</b>	<b>9</b>



# 1 Important safety and product instructions

## 1.1 Preface

This instruction manual describes how to move the product. Everyone involved in moving the product must read and understand the contents of these instructions.

This instruction manual gives you necessary information for the correct use.

For complete product and safety instructions, see [help.frameryacoustics.com](https://help.frameryacoustics.com).

## 1.2 Product information

The information in this manual corresponds to the product at the time of delivery. All information included in this manual is valid at the time of publication.

## 1.3 Copyright






This document must not be copied, presented, or delivered to a third party without explicit permission from Framery. The use of this document for any purpose other than those allowed by Framery is prohibited. Framery reserves the right to change the instructions related to the product without separate notice.

## 1.4 Manual contents

These instructions contain the following information:

- How to move the pod safely.
- How to level the pod.

## 2 Moving the product on casters (optional)

	<p><b>WARNING!</b></p> <p>The product is very heavy. Moving the product on the casters requires planning and care. Make sure the product cannot tip over while moving.</p>
	Only move the product on even surfaces: no cracks or thresholds over 3 mm (1/8 in) on the intended route.
	Do not move the product on surfaces that have an incline greater than 4%.
	When moving the product, only push below the vertical middle. Do not tow the product.
	Do not enter the product if it is standing on the casters. It is only allowed to use the casters for moving the product. Return the full weight of the product onto the leveling feet immediately after relocation and level the floor.

### 3 Move the pod

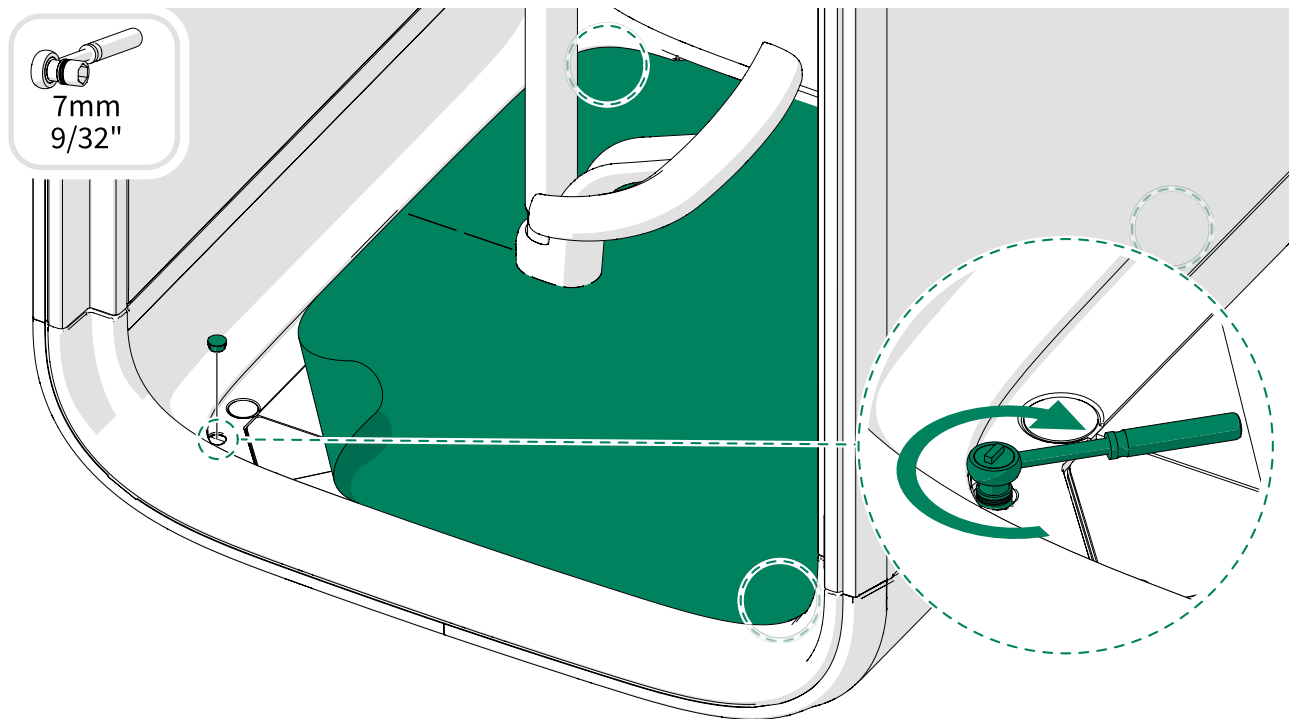


**DANGER:** Always disconnect the pod from the power outlet before you begin disassembly, maintenance, moving, or any other procedure.



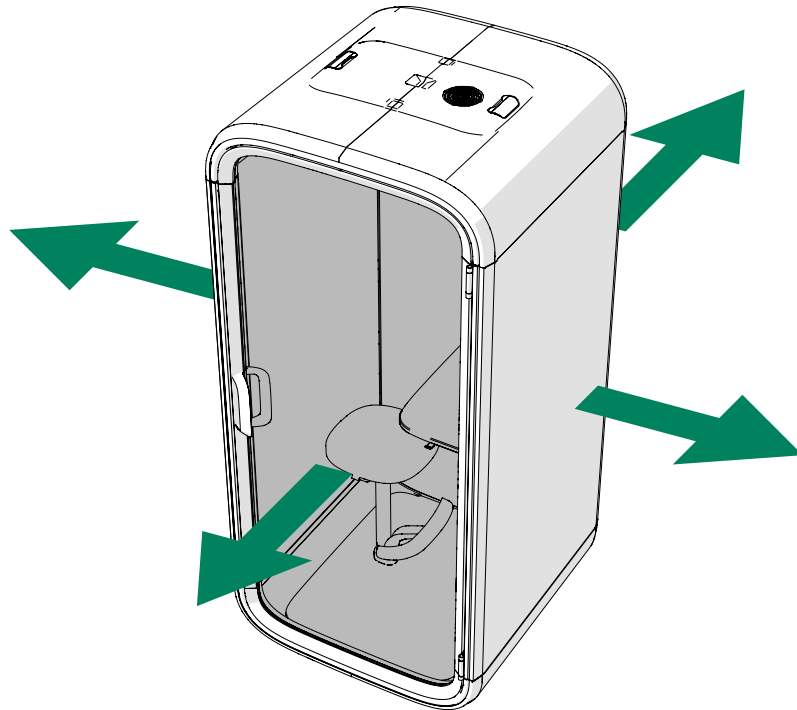
**Warning:** Risk of injury. Do not enter the pod when it is standing on the casters.

1. Screw in the leveling feet (4 pcs, clockwise) with a 7 mm (9/32 in) wrench, so that the pod stands on the casters.



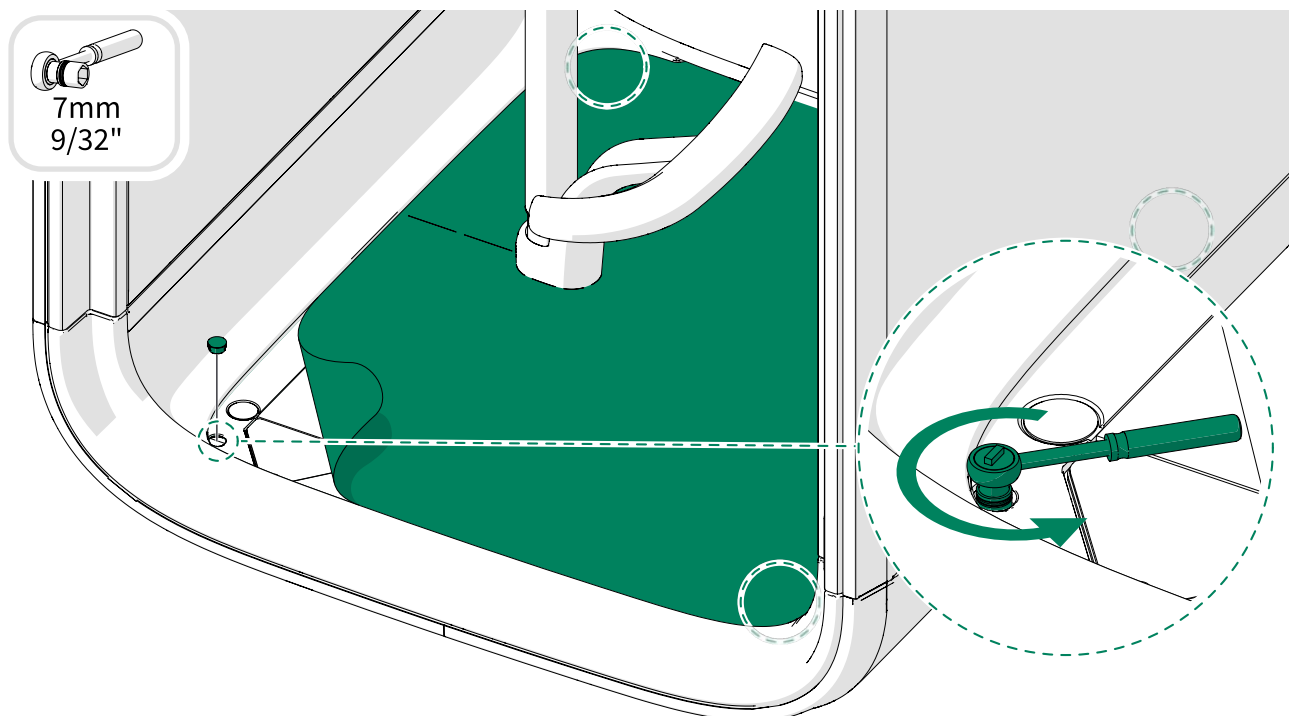
2. Carefully push the pod to the new location.

- ⚠ **Note:** Only push the pod below the vertical middle, do not tow it.
- ⚠ **Note:** Only move the pod at walking speed.
- ⚠ **Note:** Only move the pod on even surfaces. The pod can cross thresholds a maximum of 3 mm (1/8 in).



3. When the pod is at the new location, immediately screw out (counterclockwise) the leveling feet with a 7 mm (9/32 in) wrench.

- ⚠ **Note:** Make sure that the leveling feet are past the casters and lightly touching the floor. The leveling feet are against the floor when you feel resistance.

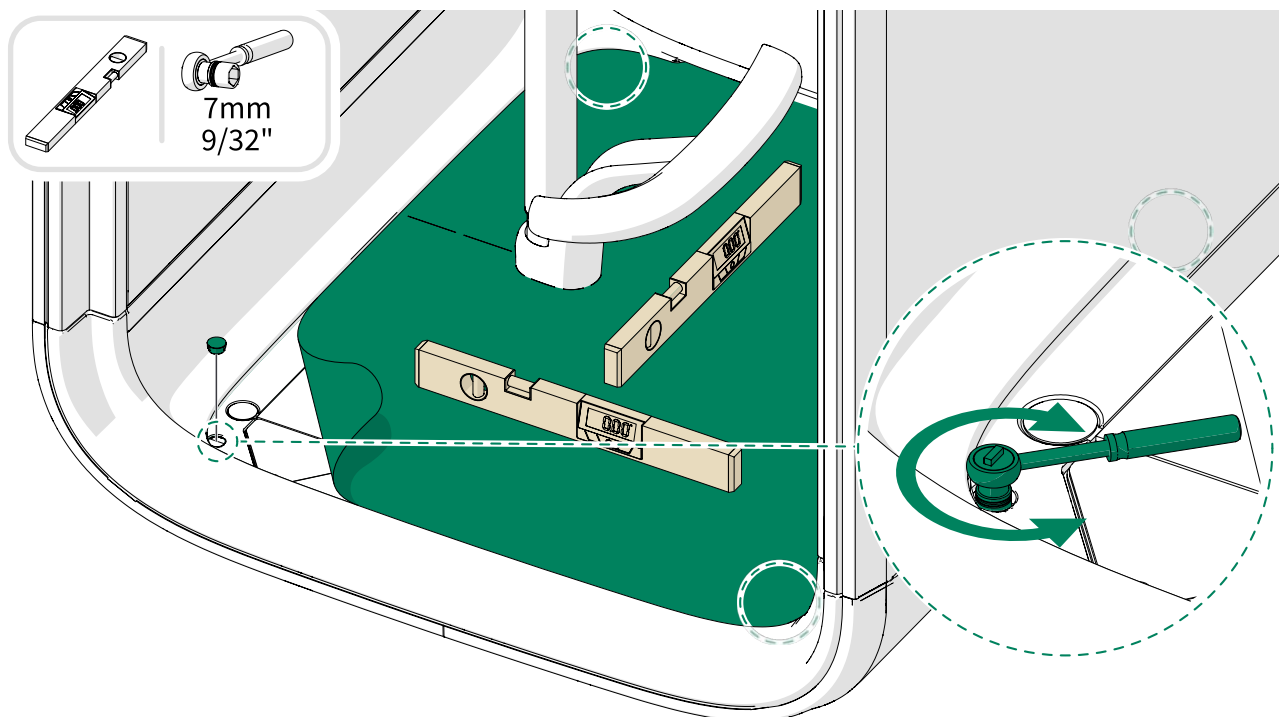




## 4 Level the pod

Level the floor of the pod and screw out the leveling feet to their final positions.

- ⚠ **Note:** Measure the opposite points with a spirit level repeatedly and adjust the leveling feet gradually. Only screw the leveling feet outward, to make sure that they all stay past the casters.







**framery**

Framery One Compact

Moving the pod

Patamäenkatu 7

33900 Tampere

FINLAND

VAT: FI 23527139