

Framery One Compact

Fire safety

English
Version 1.1

Tampere, Finland 17.12.2024

Contents

1 Important safety and product instructions.....	5
1.1 Preface.....	5
1.2 Product information.....	5
1.3 Copyright.....	5
1.4 Manual contents.....	5
 2 Install a fire alarm notification device (strobe, strobe-horn, speaker, speaker-strobe).....	 6
 3 Install a fire suppression device (sprinkler / cease fire).....	 15
3.1 Install the cease fire.....	20
3.2 Install the sprinkler (hard pipe).....	24

1 Important safety and product instructions

1.1 Preface

This instruction manual describes the installation of the product. Everyone involved in installing the product must read and understand the contents of the installation and safety instructions.

This instruction manual gives you necessary information for the correct installation of the product.

For complete product and safety instructions, see **help.framery.com**.

1.2 Product information

The information in this manual corresponds to the product at the time of delivery. All information included in this manual is valid at the time of publication.

1.3 Copyright

This document must not be copied, presented, or delivered to a third party without explicit permission from Framery. The use of this document for any purpose other than those allowed by Framery is prohibited. Framery reserves the right to change the instructions related to the product without separate notice.

1.4 Manual contents

The installation instructions contain the following information:

- General information about the purpose and content of the instructions
- Information related to safety
- Installation instructions

2 Install a fire alarm notification device (strobe, strobe-horn, speaker, speaker-strobe)

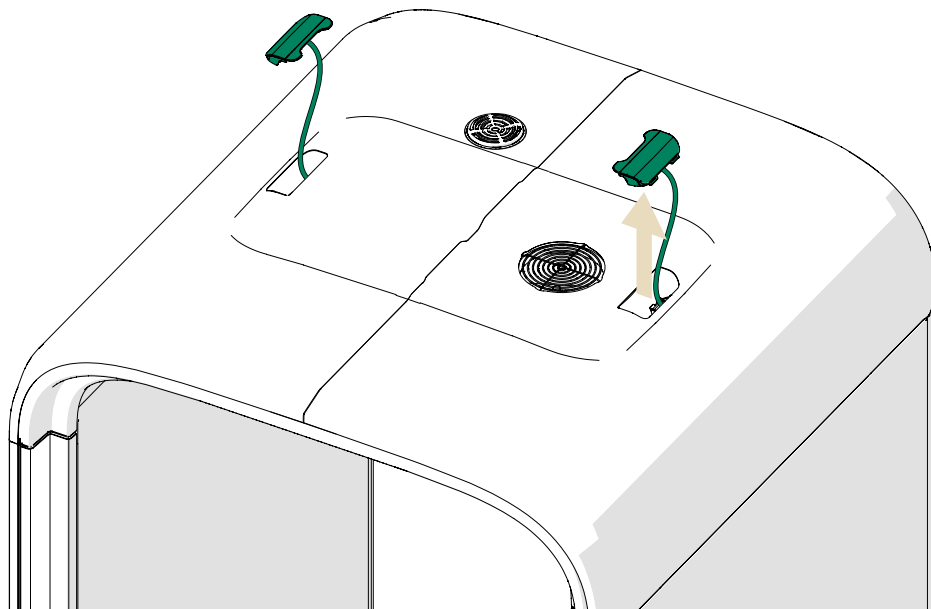


DANGER: Always disconnect the pod from the power outlet before you begin disassembly, maintenance, moving, or any other procedure.

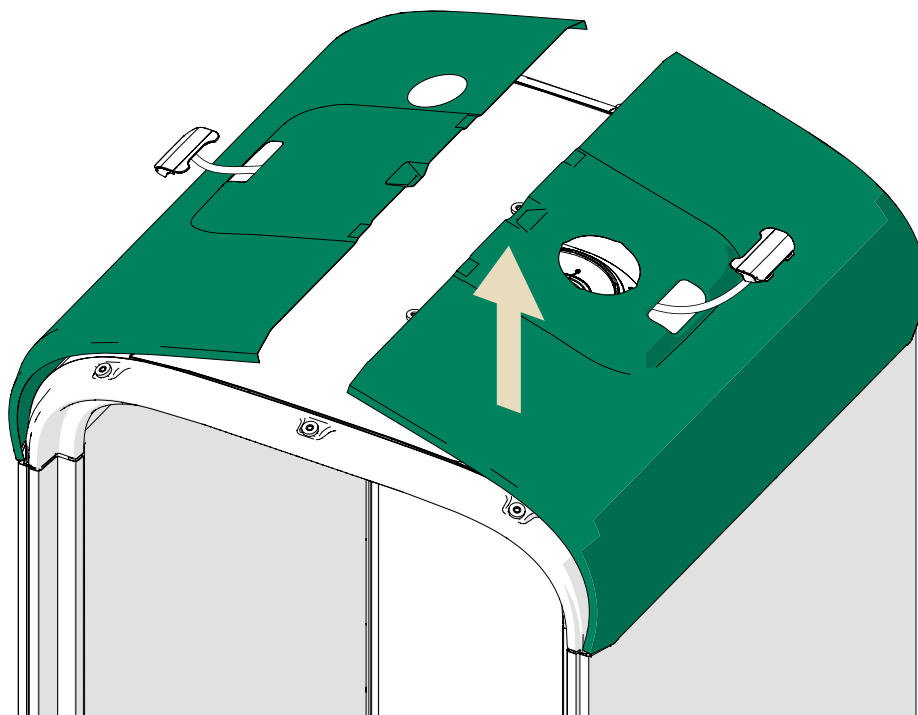


Note: If there is no need to disassemble the interior panels, you can start from step 6.

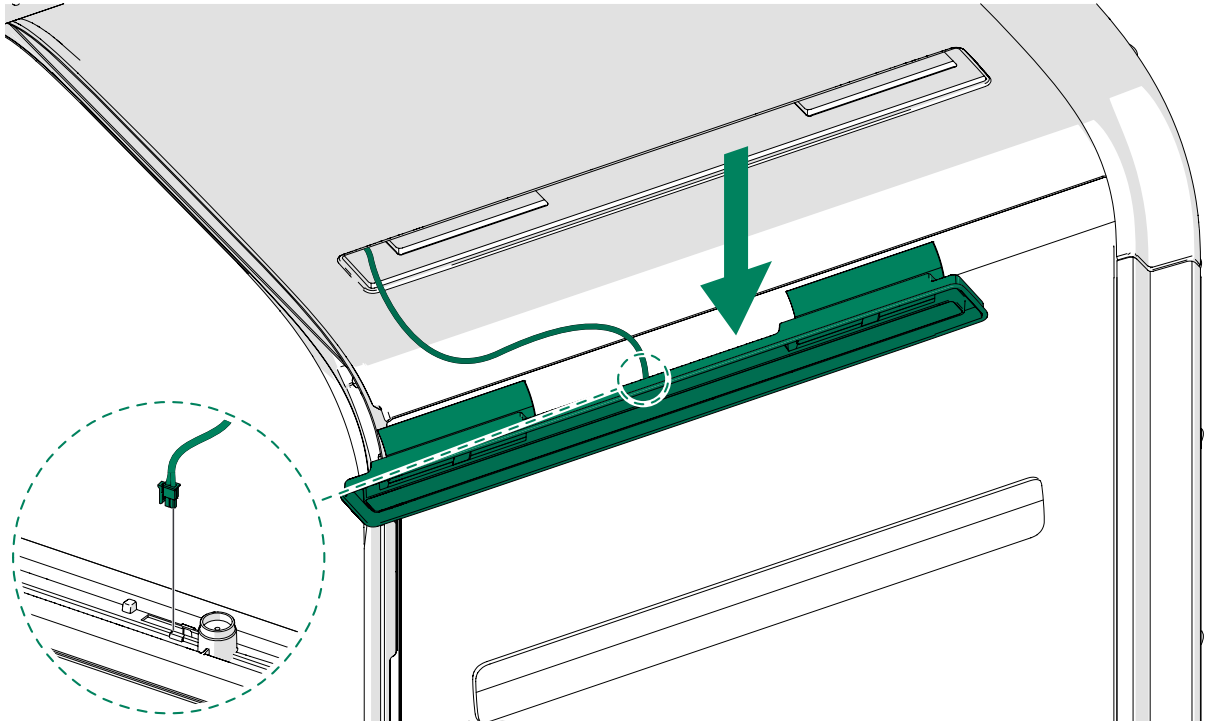
1.



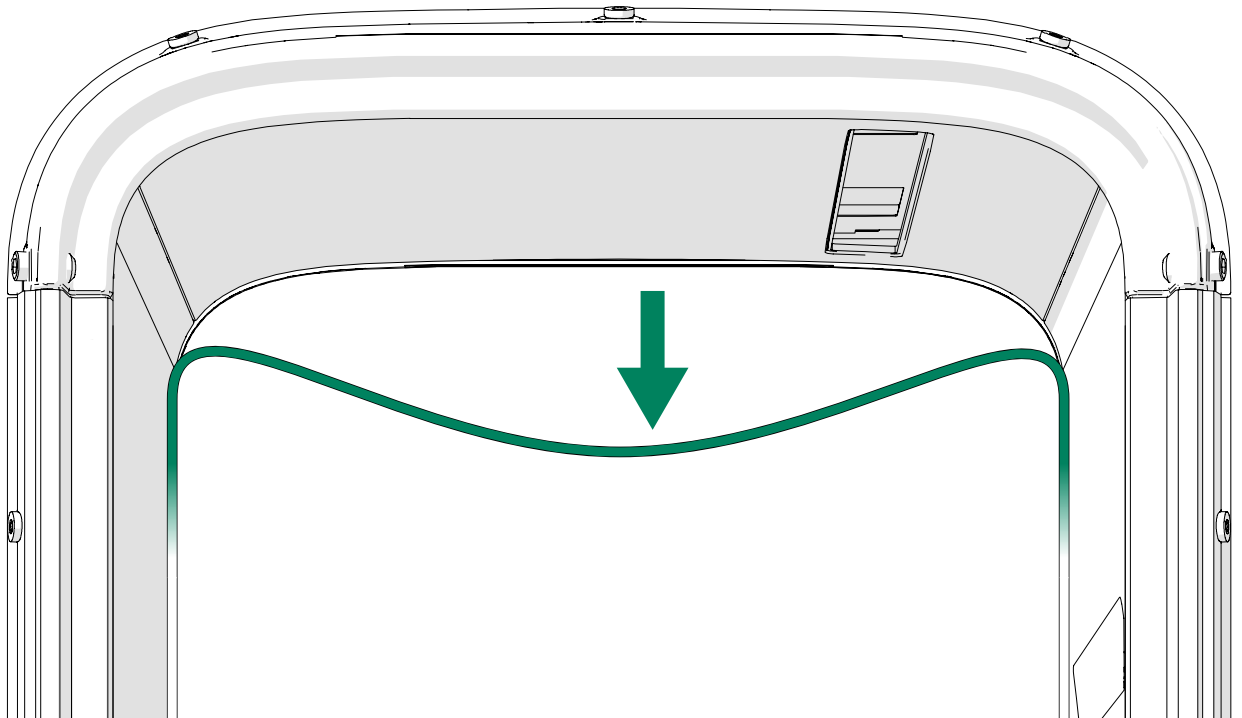
2.



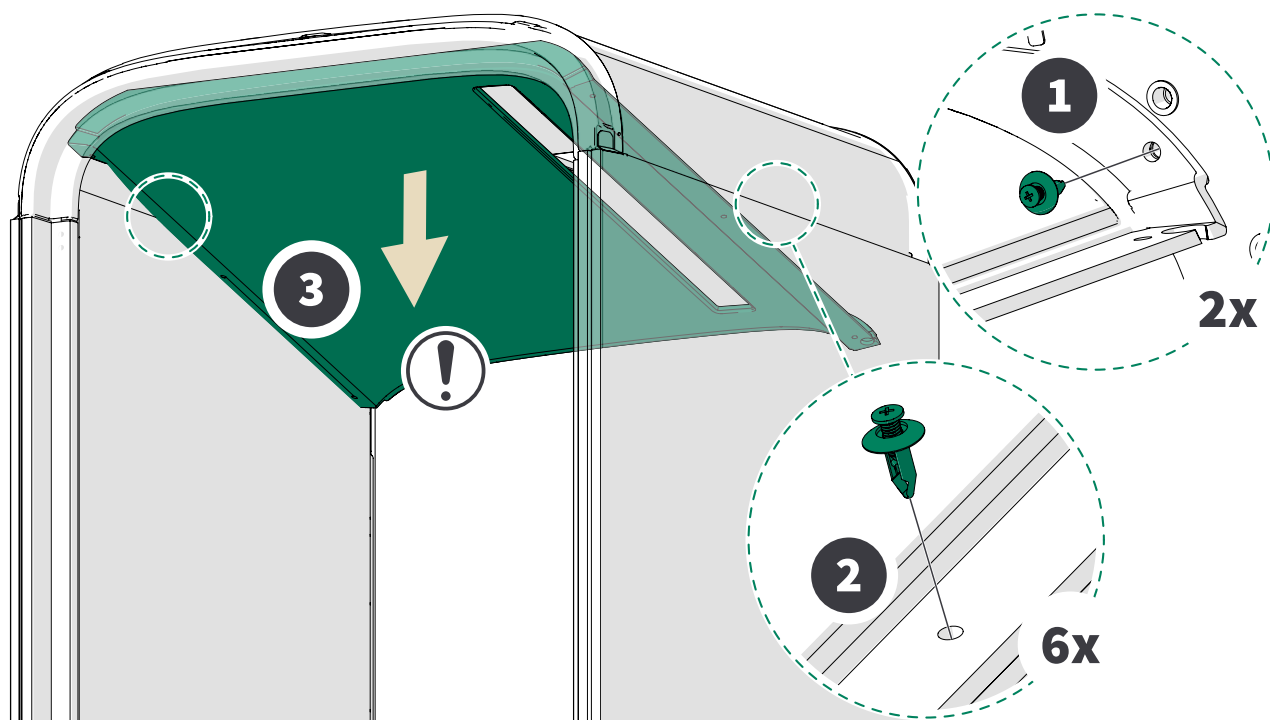
3.



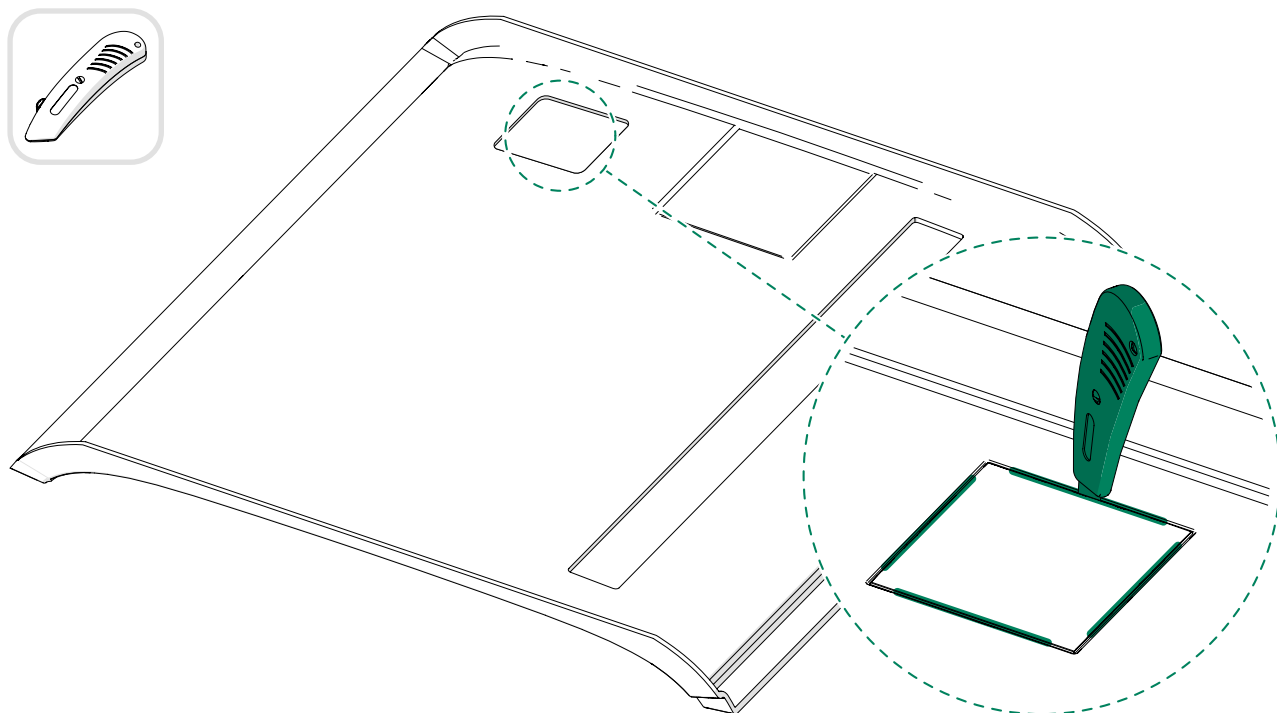
4.



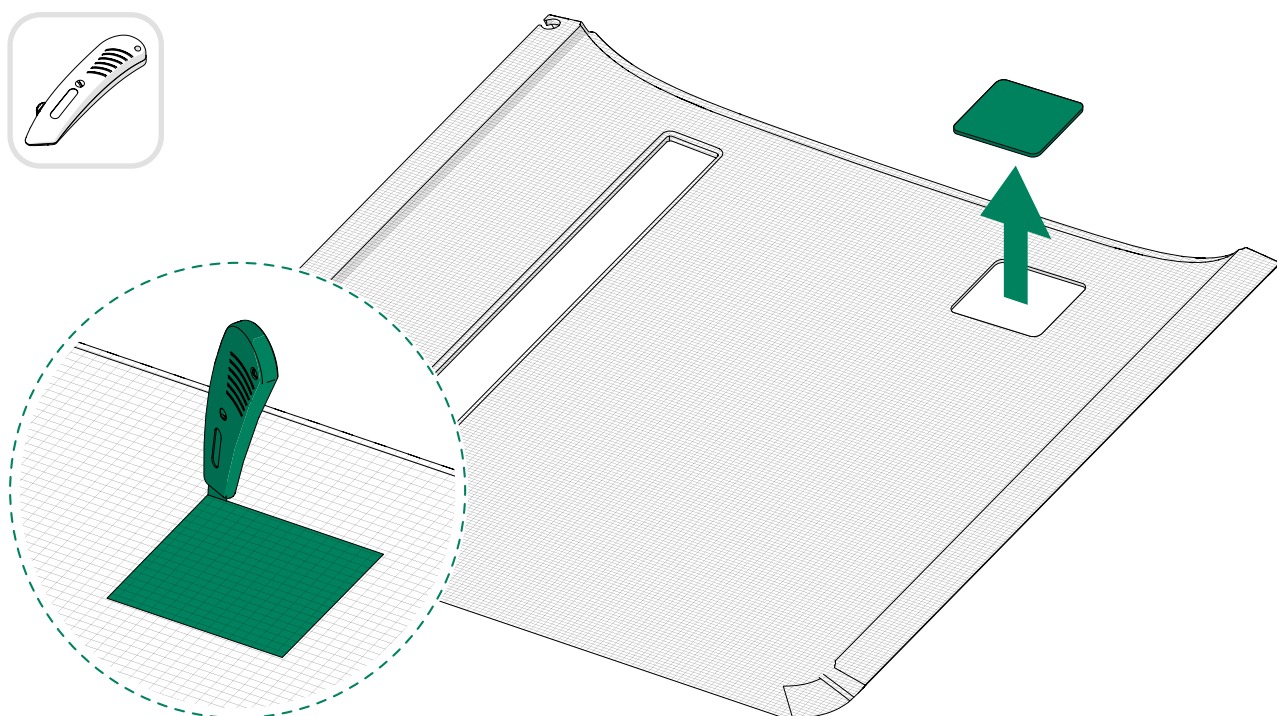
5.  **Note:** Removing the ceiling panel requires force. The panel can withstand bending.



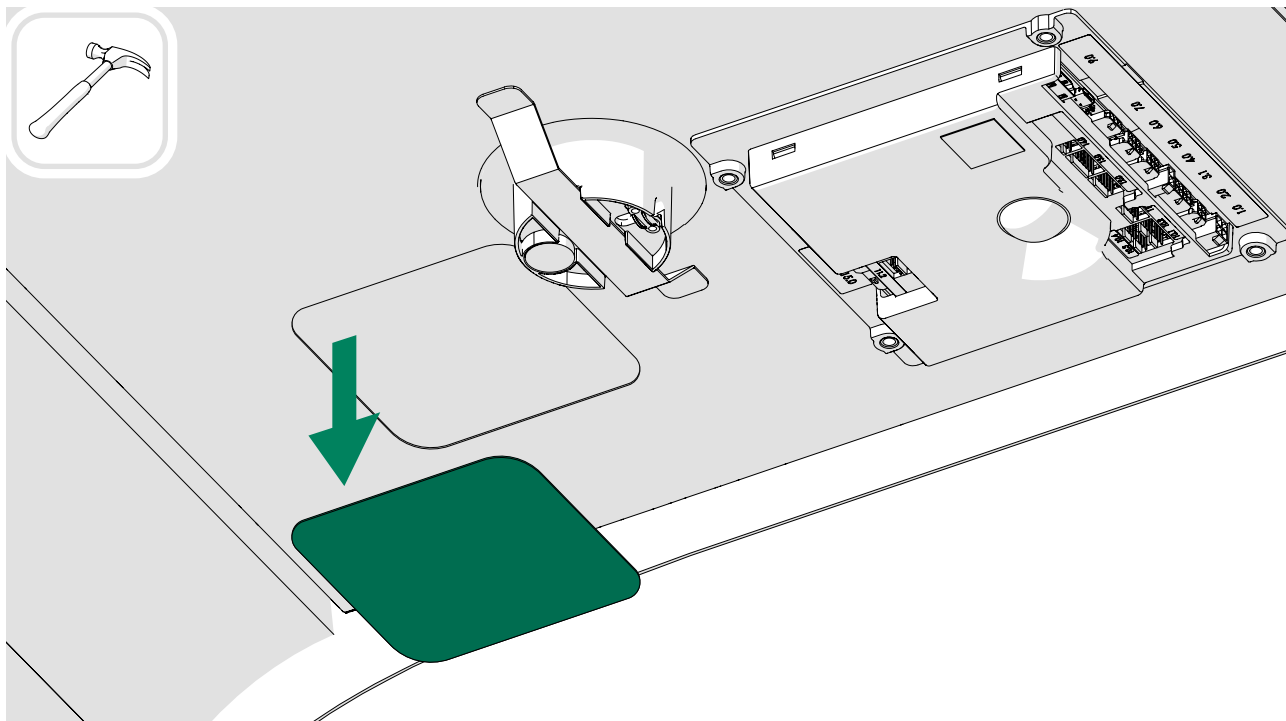
6. Cut the ceiling interior panel along the rectangular marking on the inner (white) side of the panel.



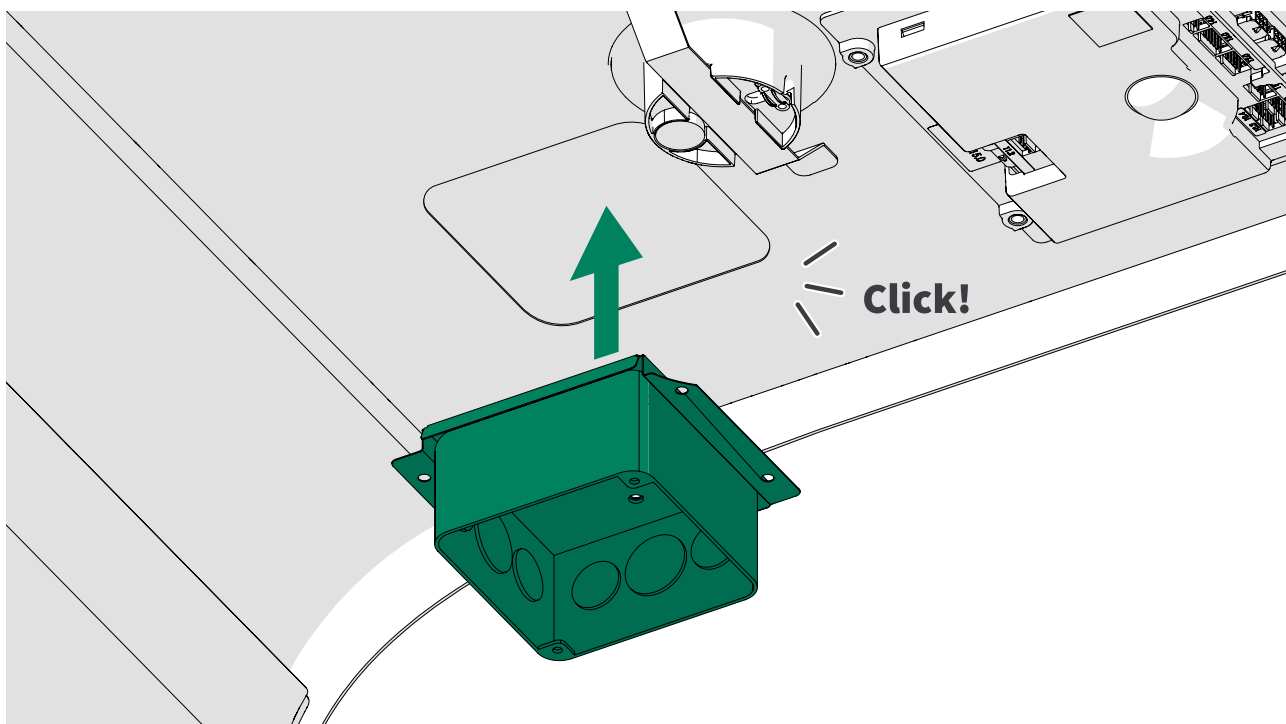
Make the final cuts from the outer (visible) side of the panel.



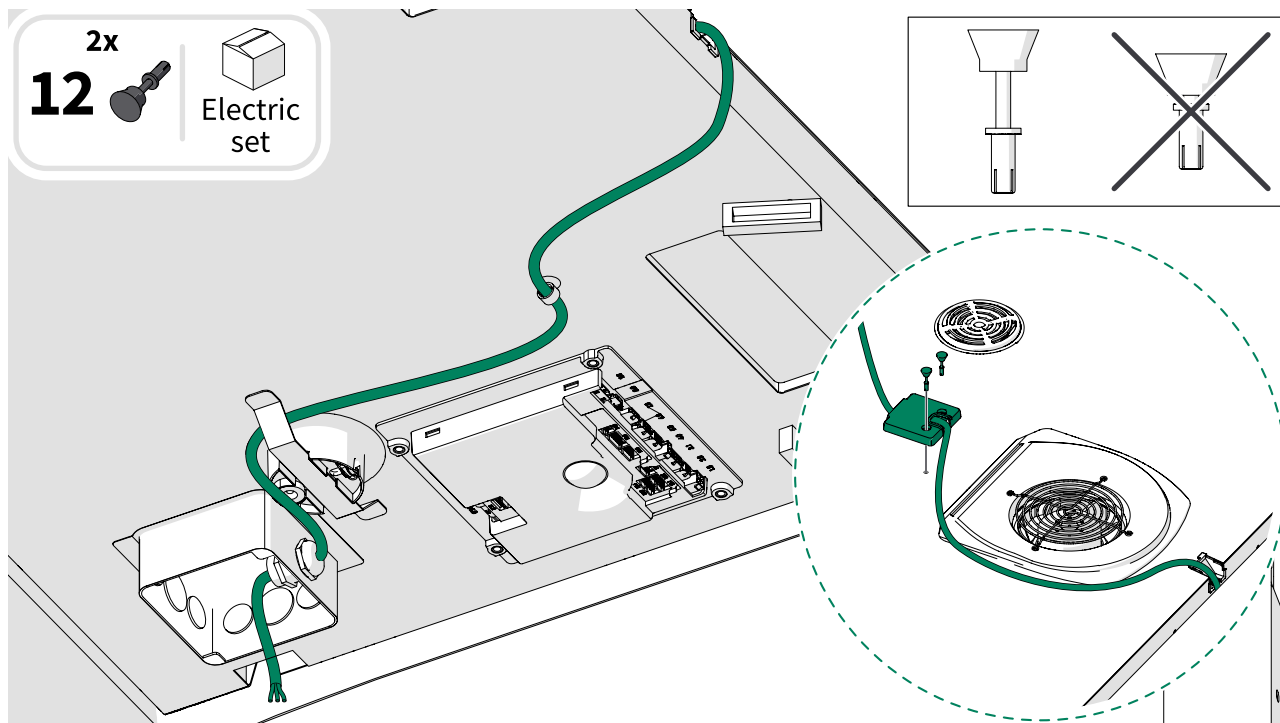
7.



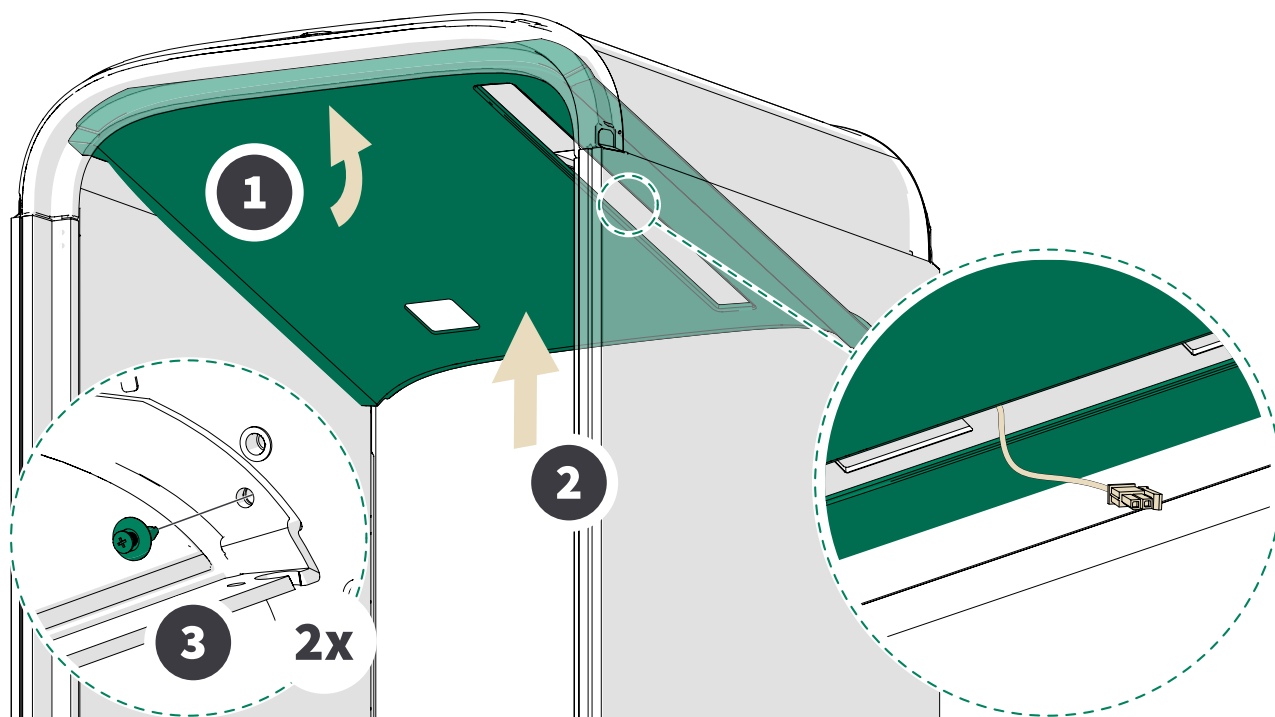
8.



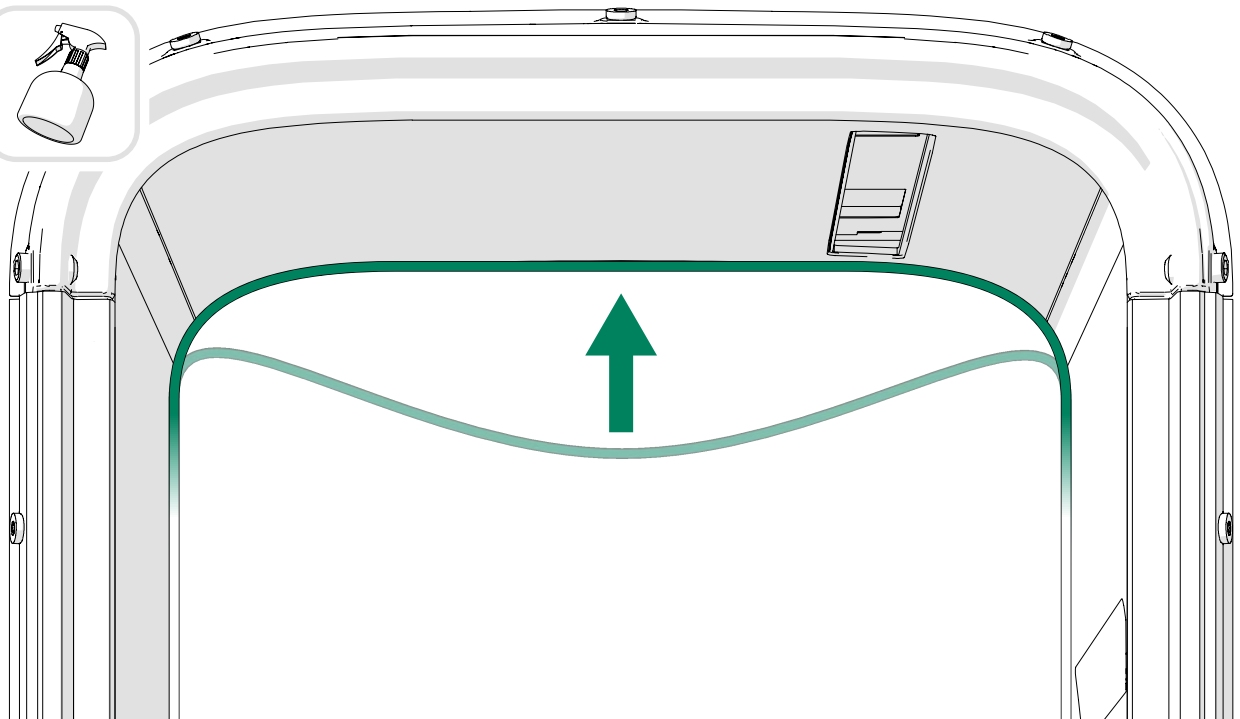
9.



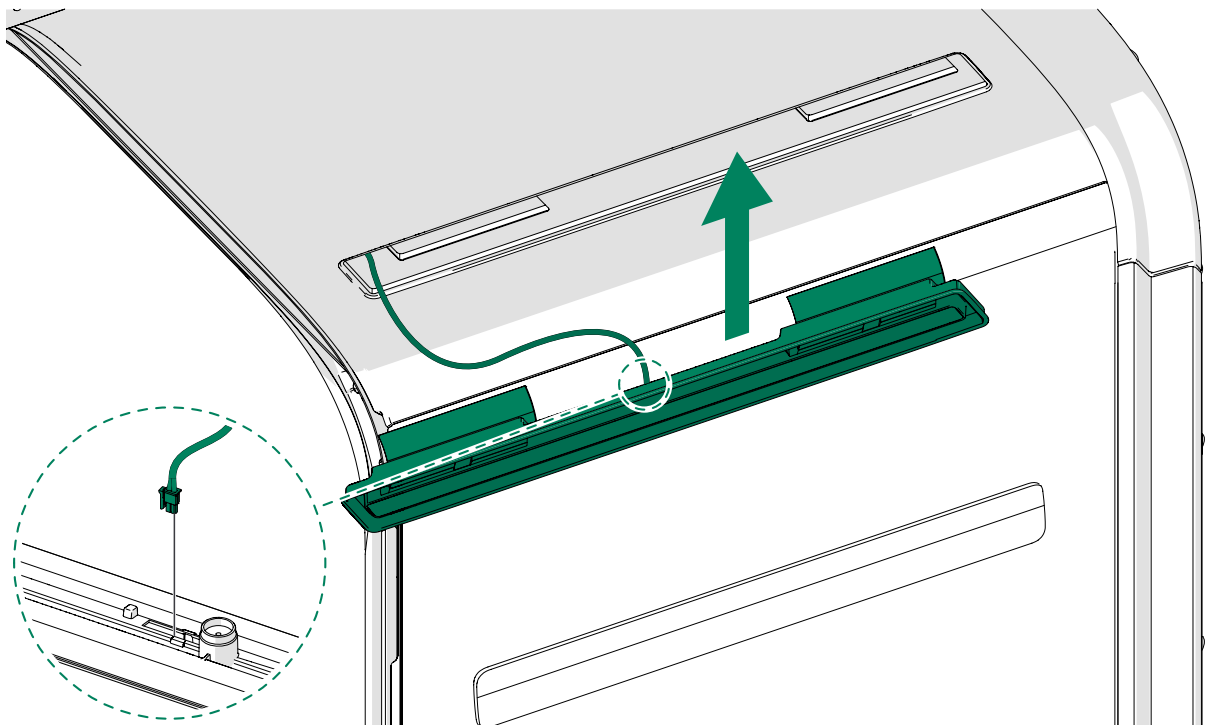
10.



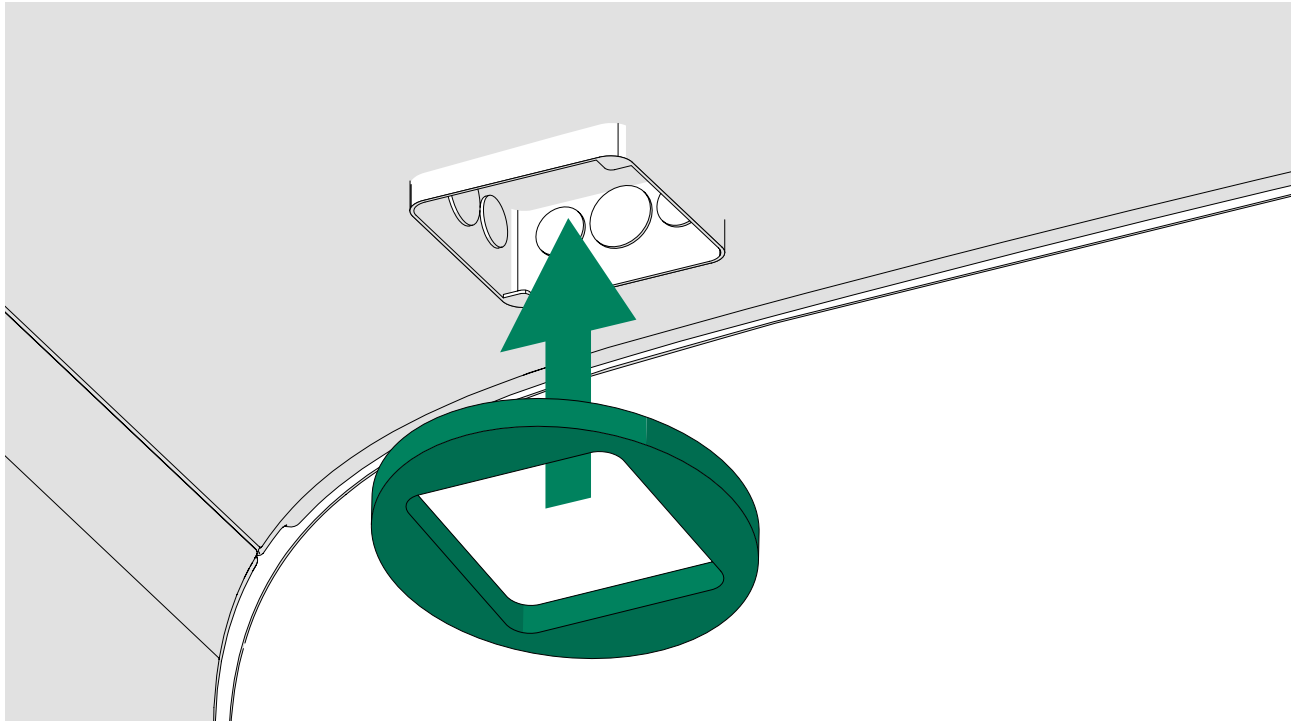
11.



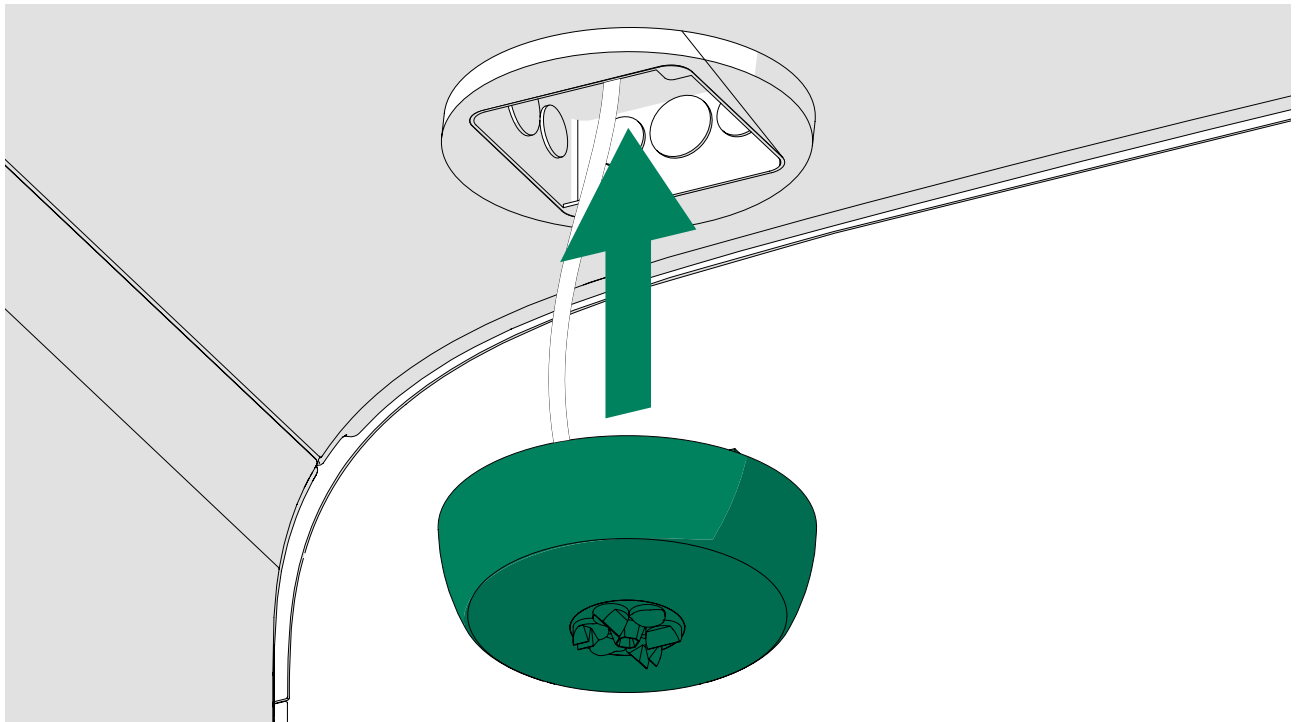
12.




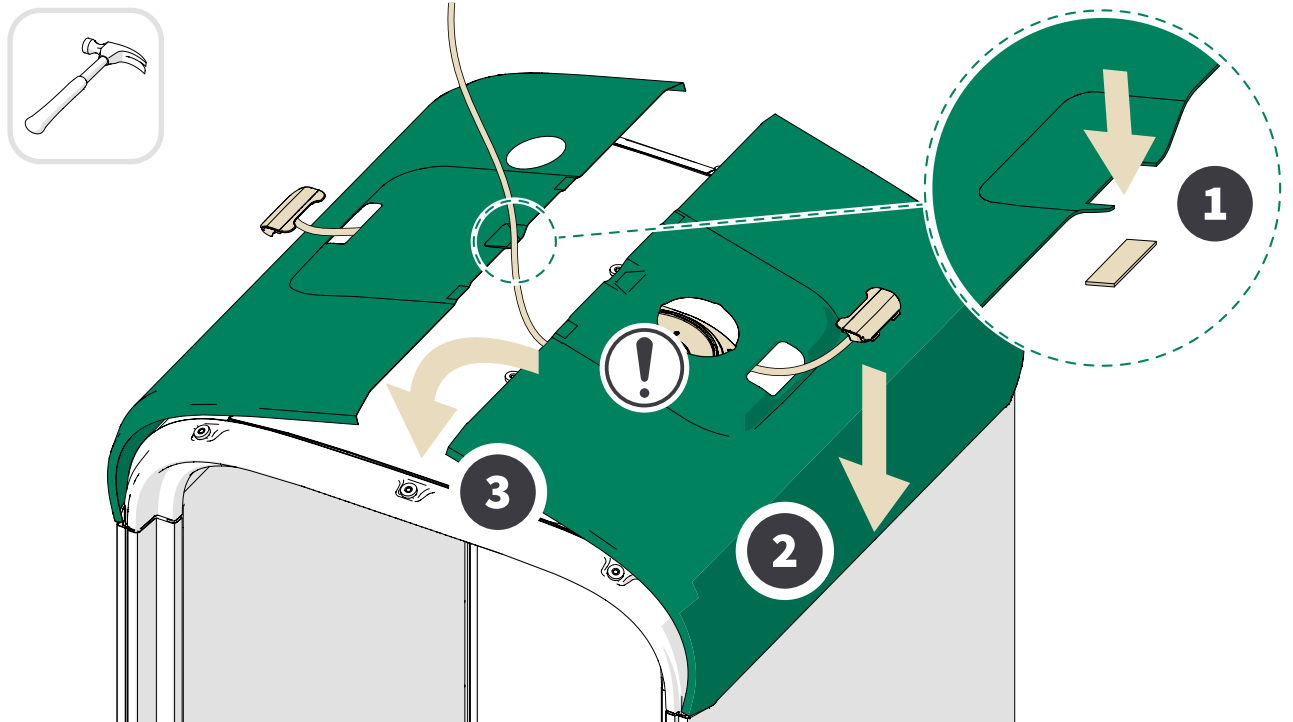
13.



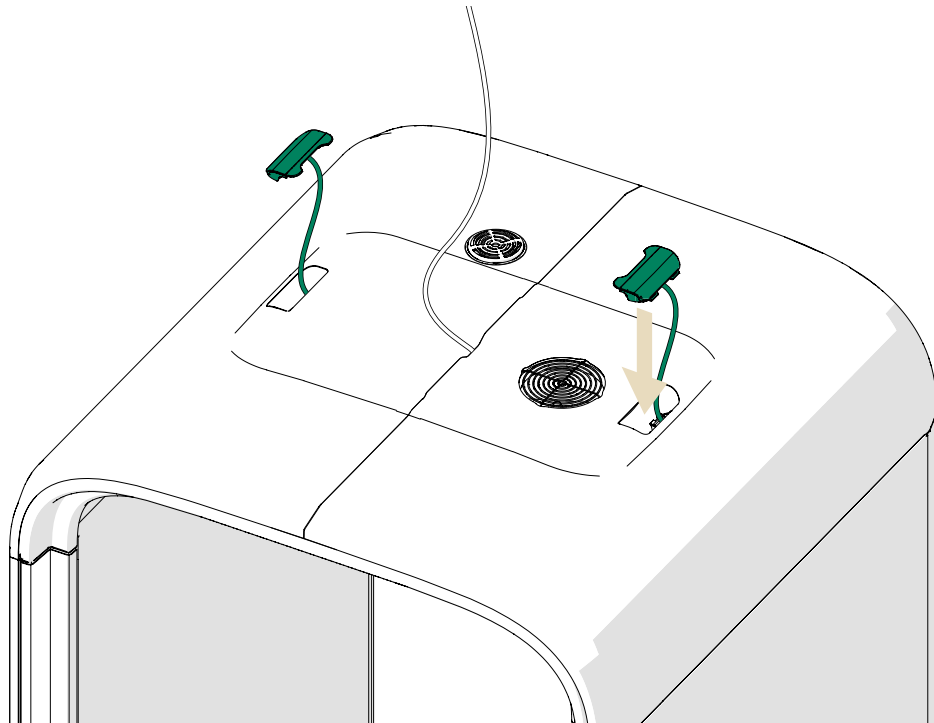
14.



15.  **Note:** Punch through the precut in the middle of the roof for the fire alarm's power cord.

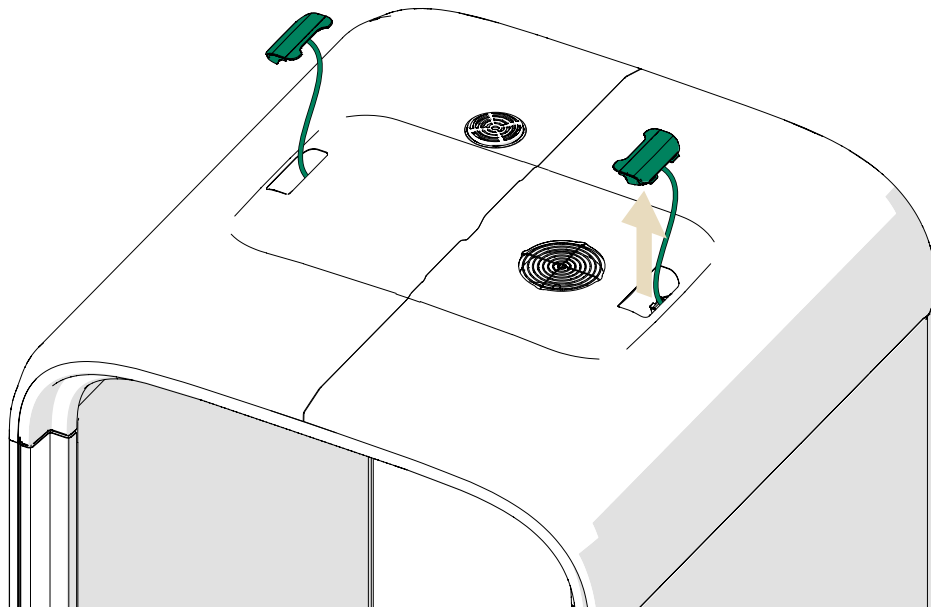


- 16.

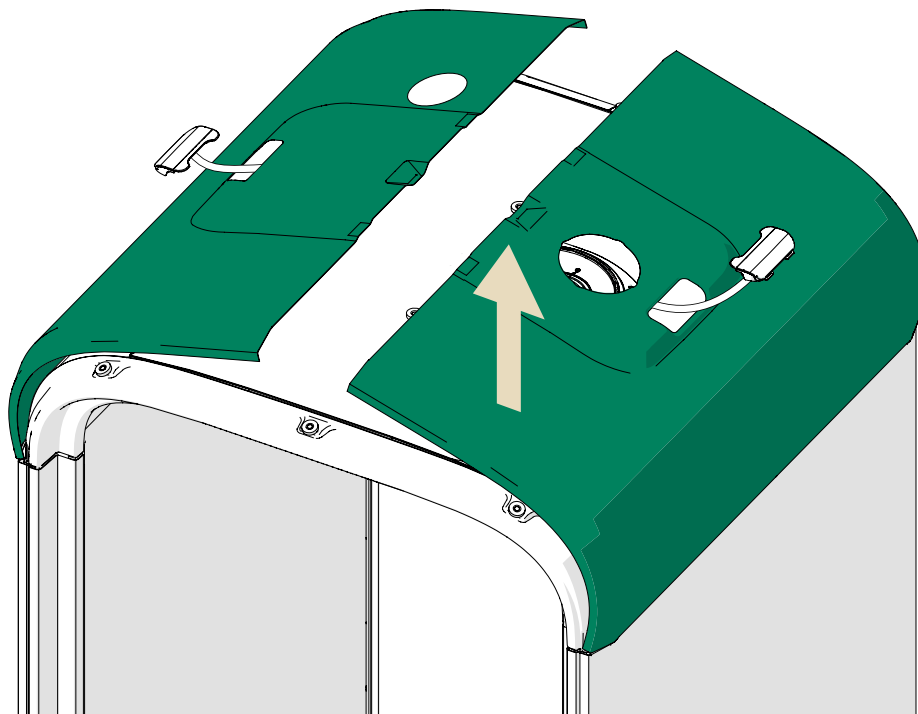


3 Install a fire suppression device (sprinkler / cease fire)

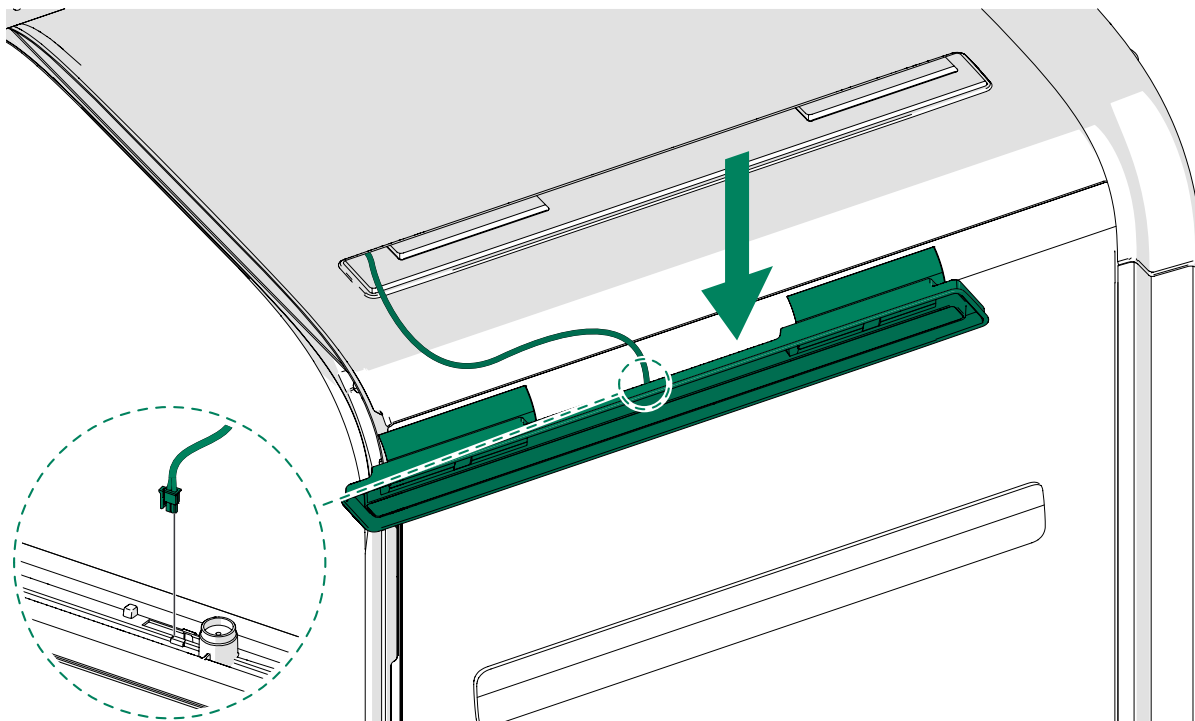
1.



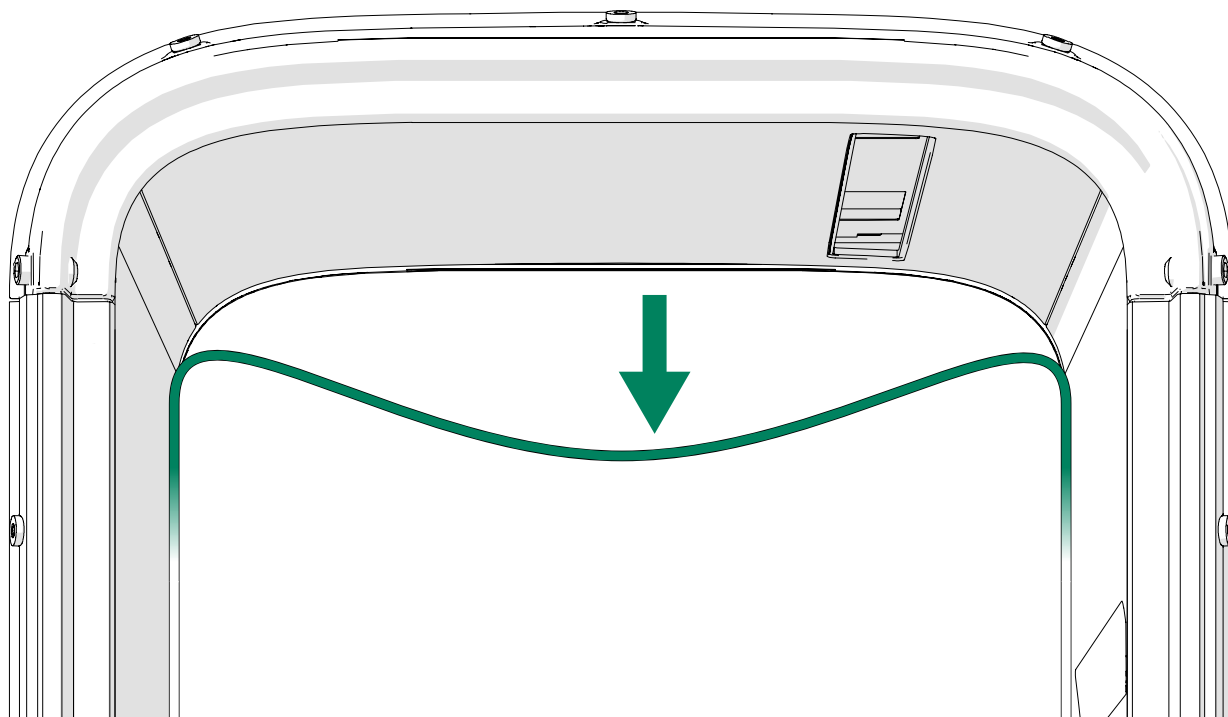
2.



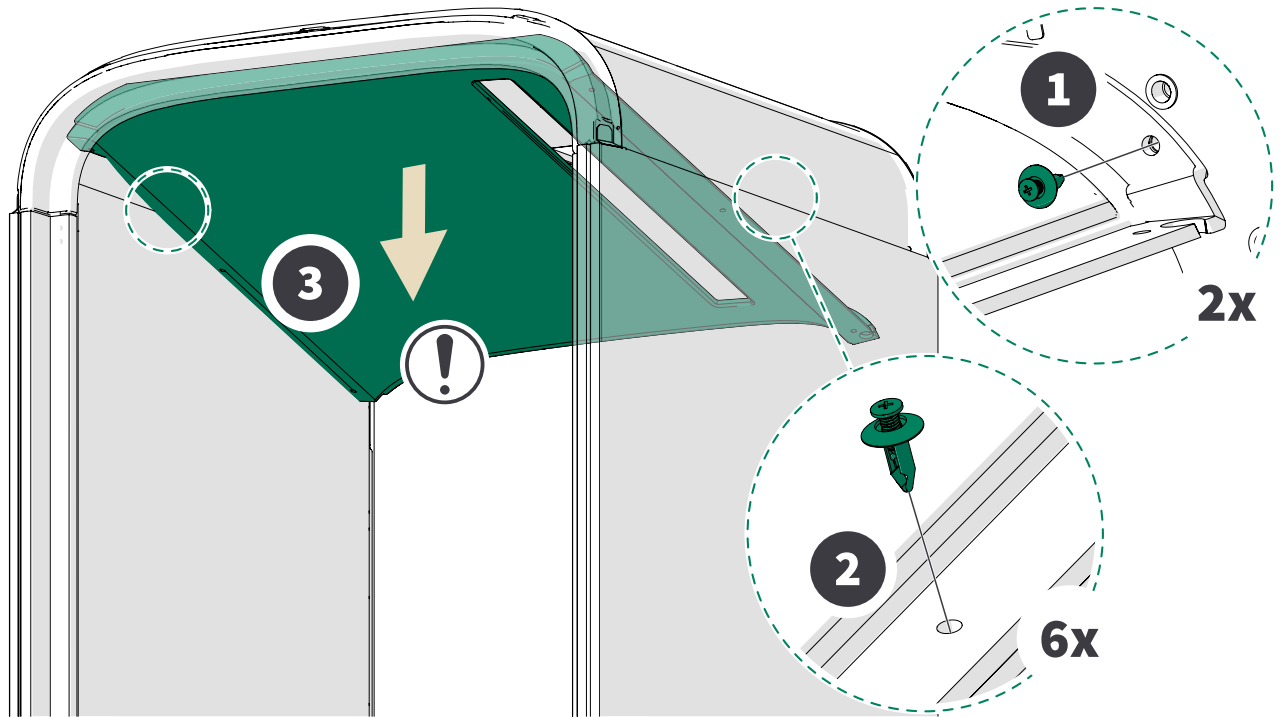
3.



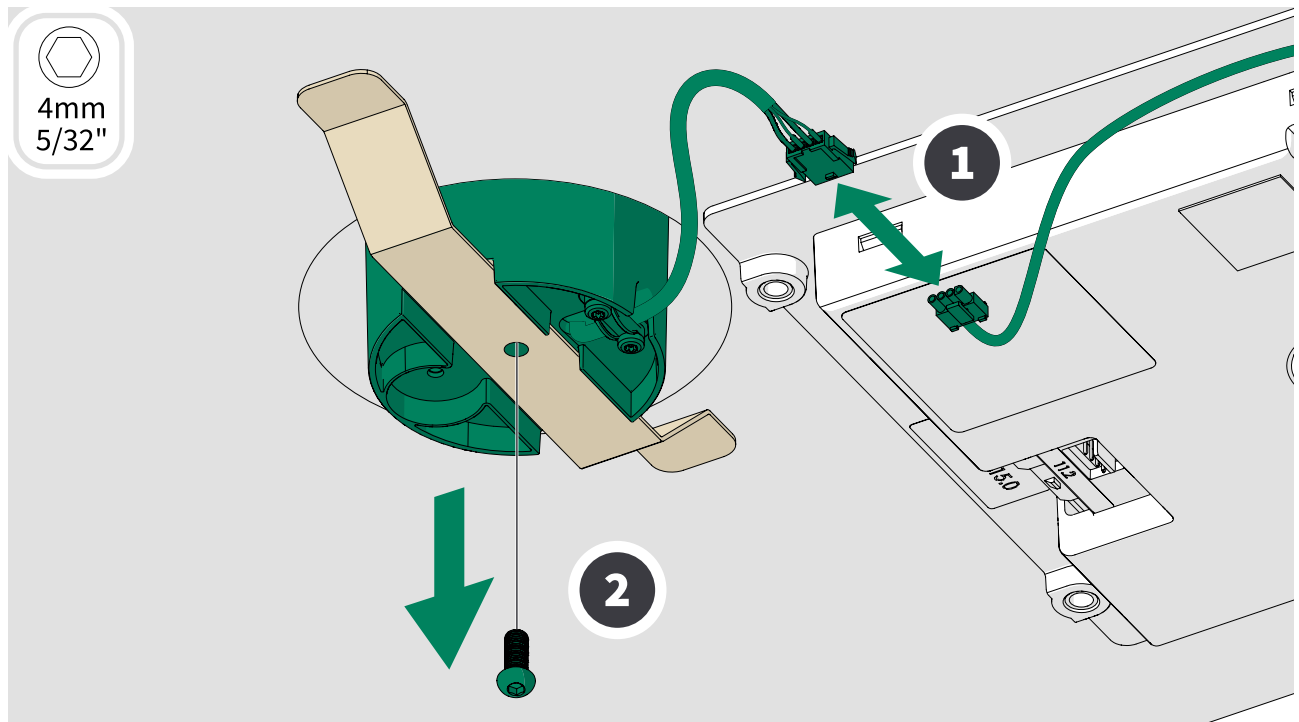
4.



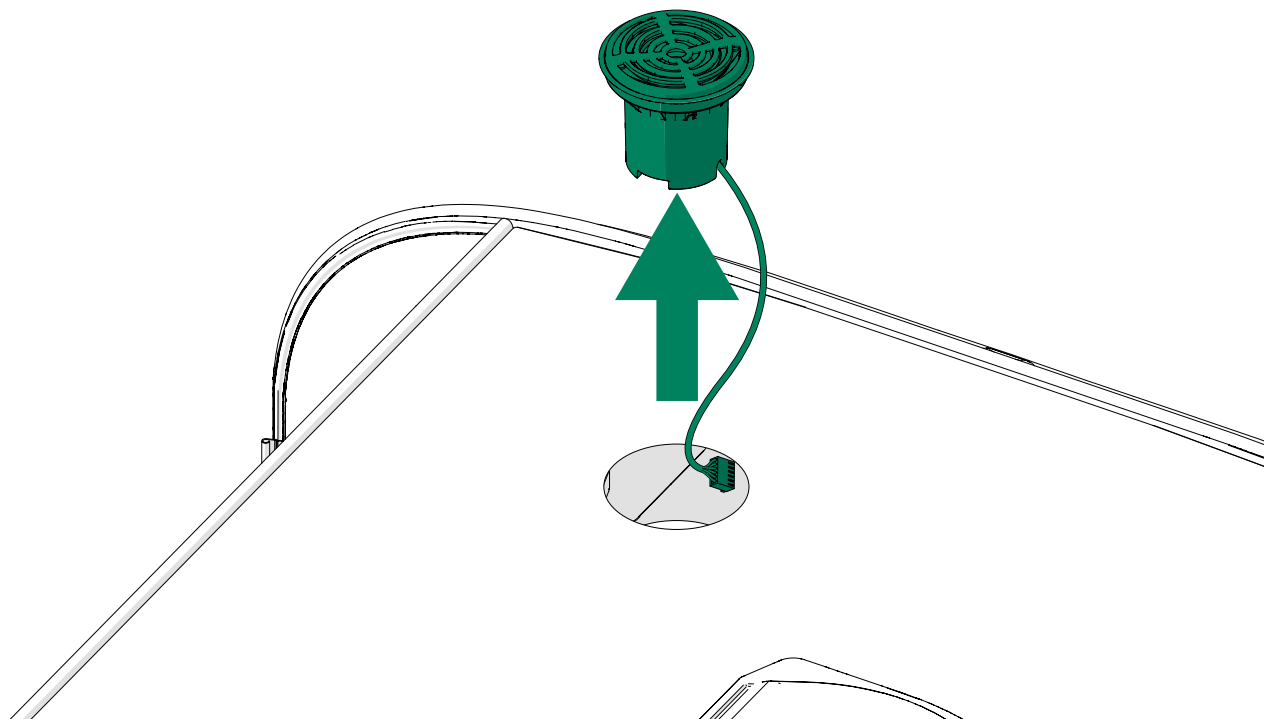
5.



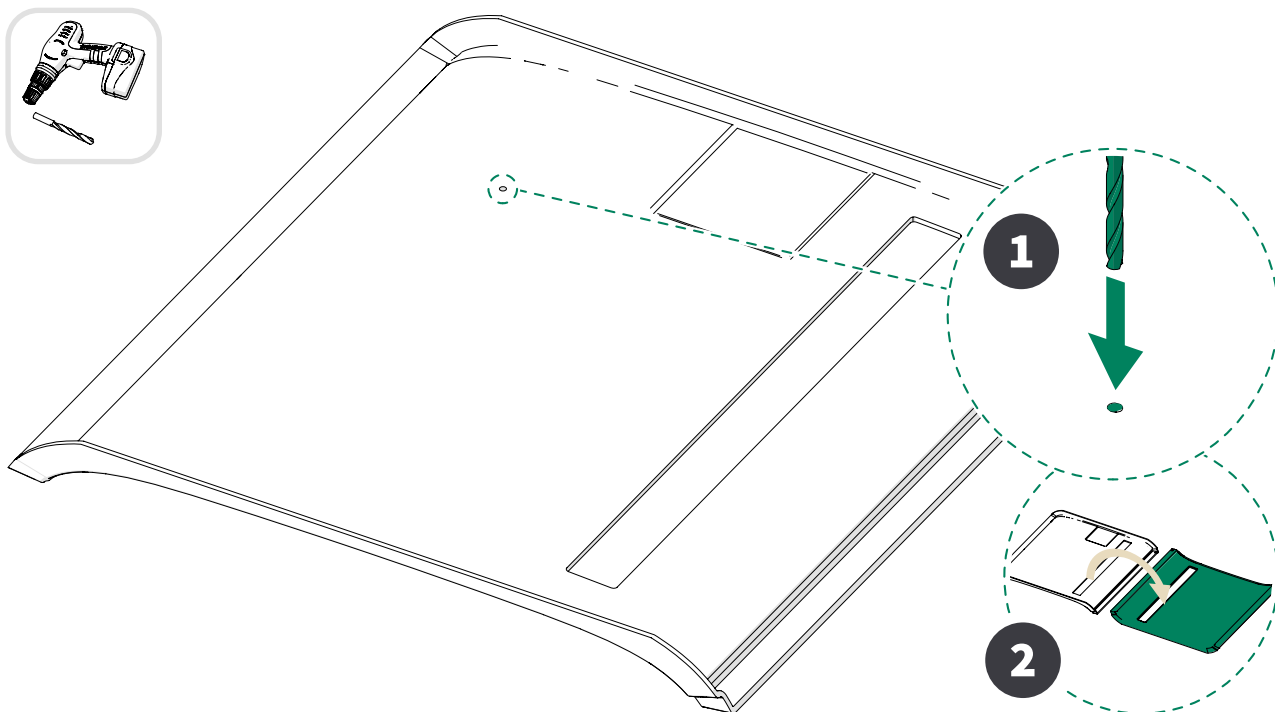
6.



7.



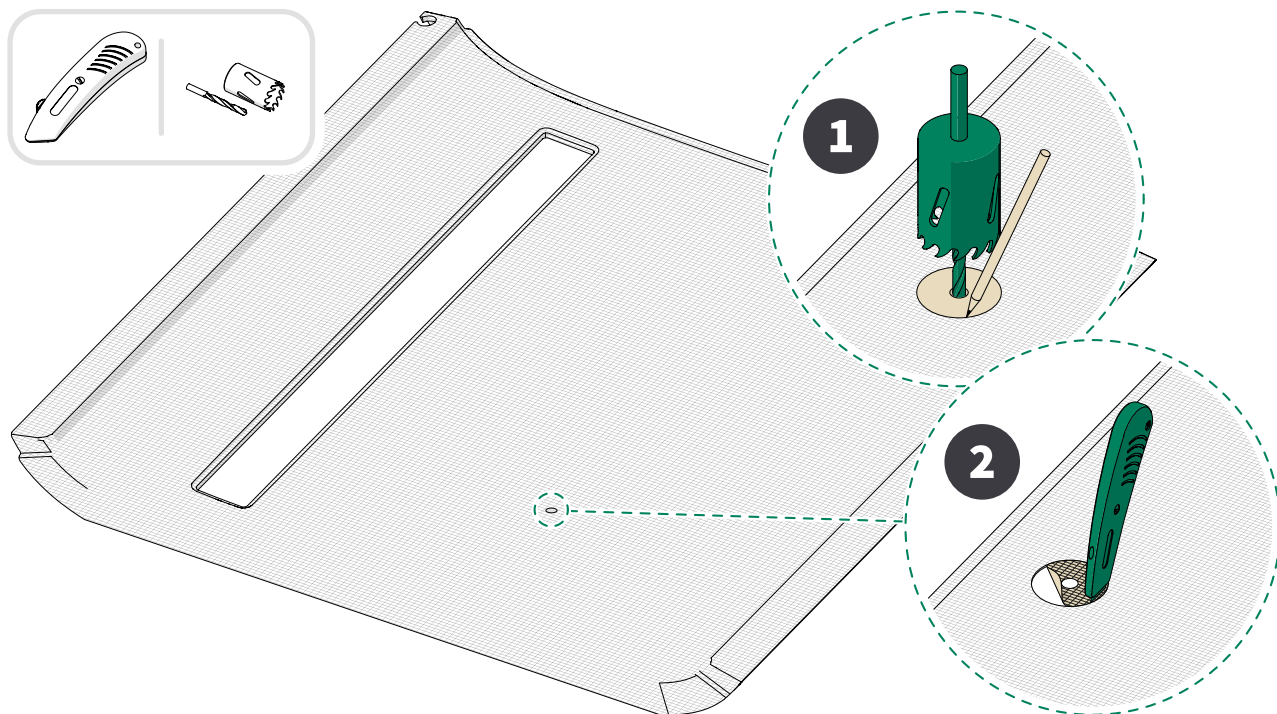
8. Locate the embossed mark on the inner side of the ceiling interior panel. Drill a pilot hole through the panel. Flip the panel over.



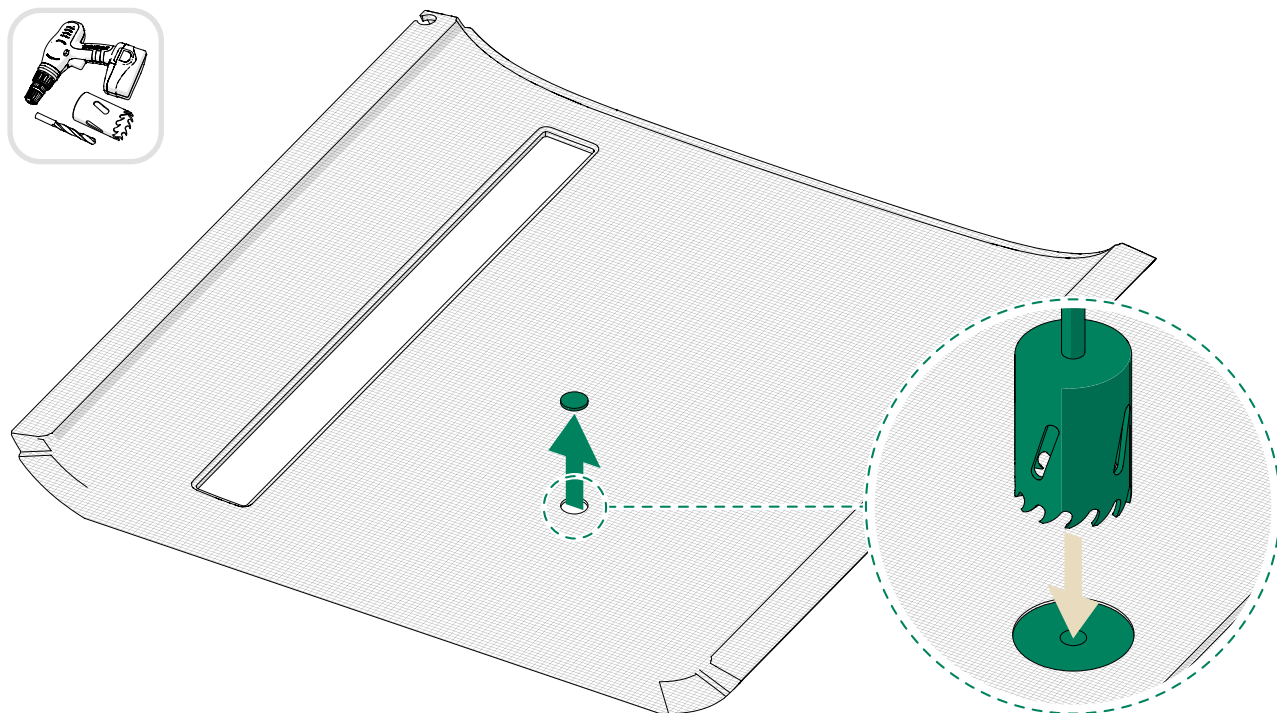
9. With the fabric side of the panel facing upwards, locate the pilot hole and insert the pilot bit of the hole saw into the hole. Trace a larger circle using the hole saw as a guide. Use a utility knife to cut along the marked circle.



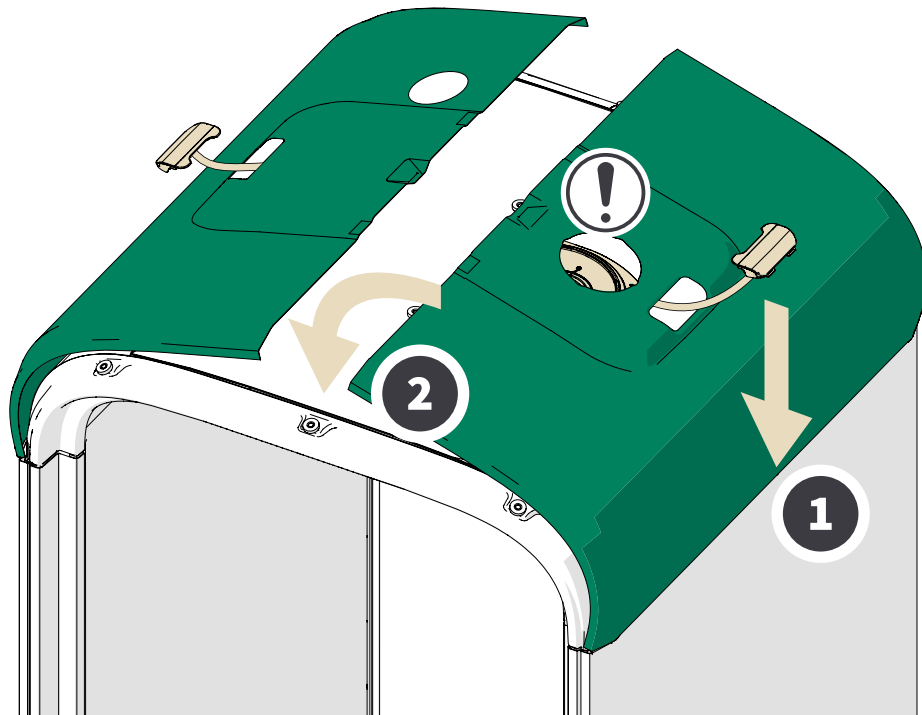
Note: Cut a hole to the ceiling interior panel according to the size of the sprinkler head.



10. Finish the cut through the fabric using the hole saw.

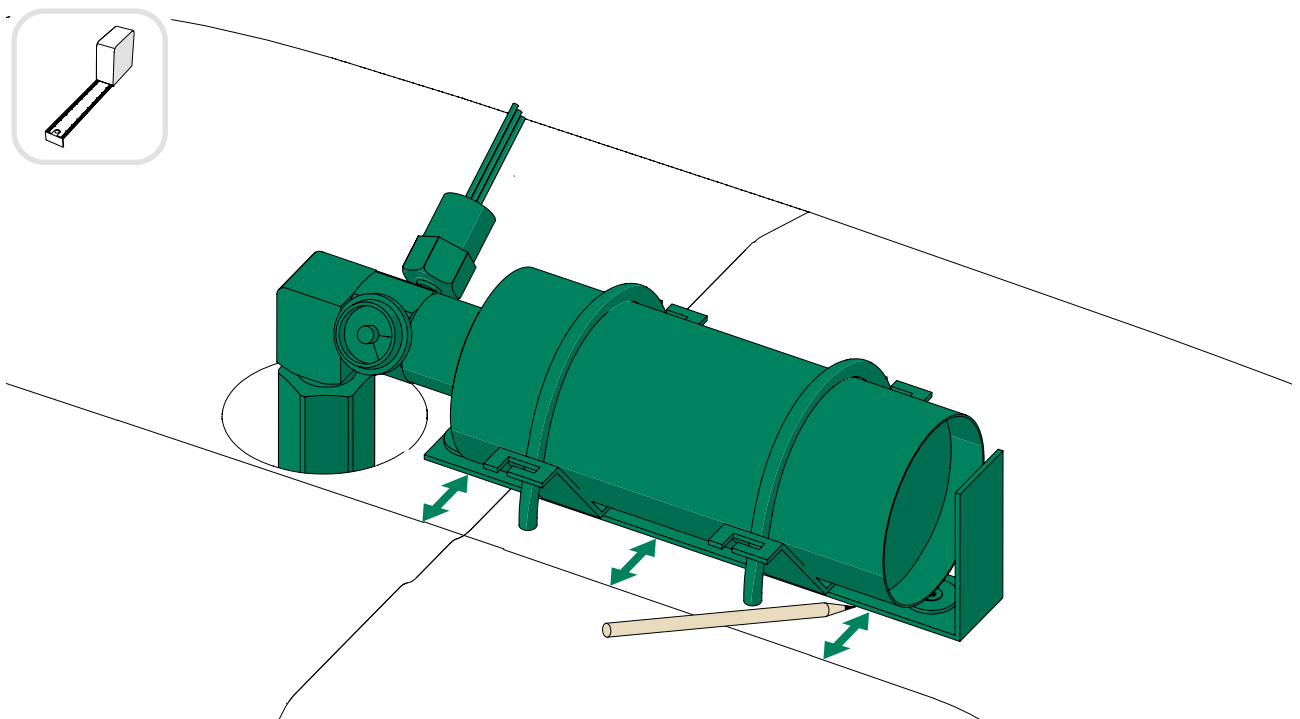


11.

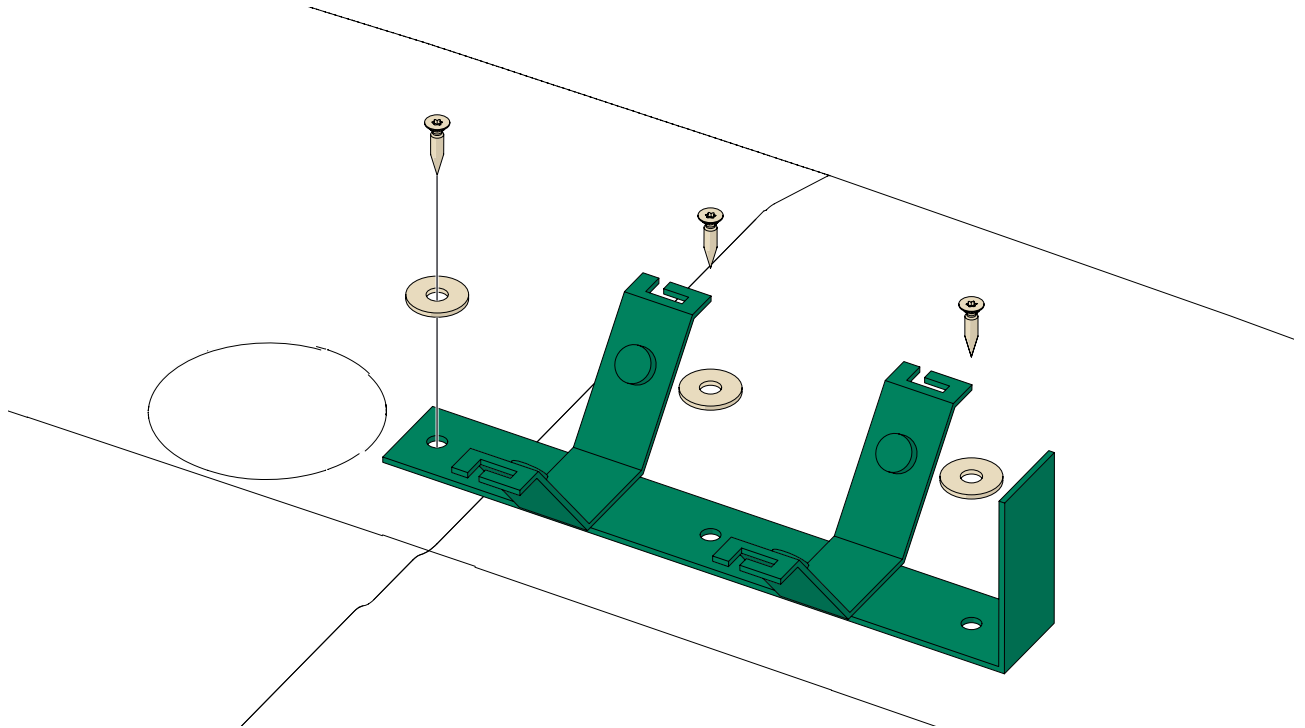


3.1 Install the cease fire

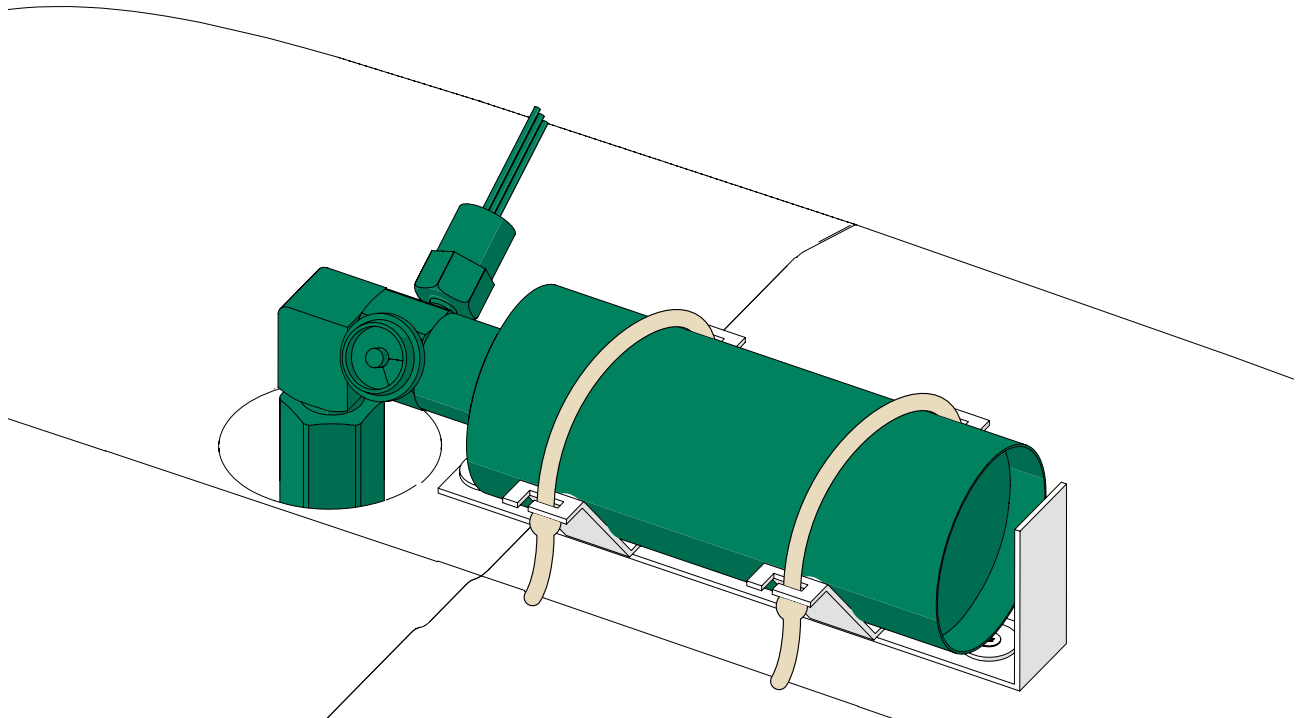
1.



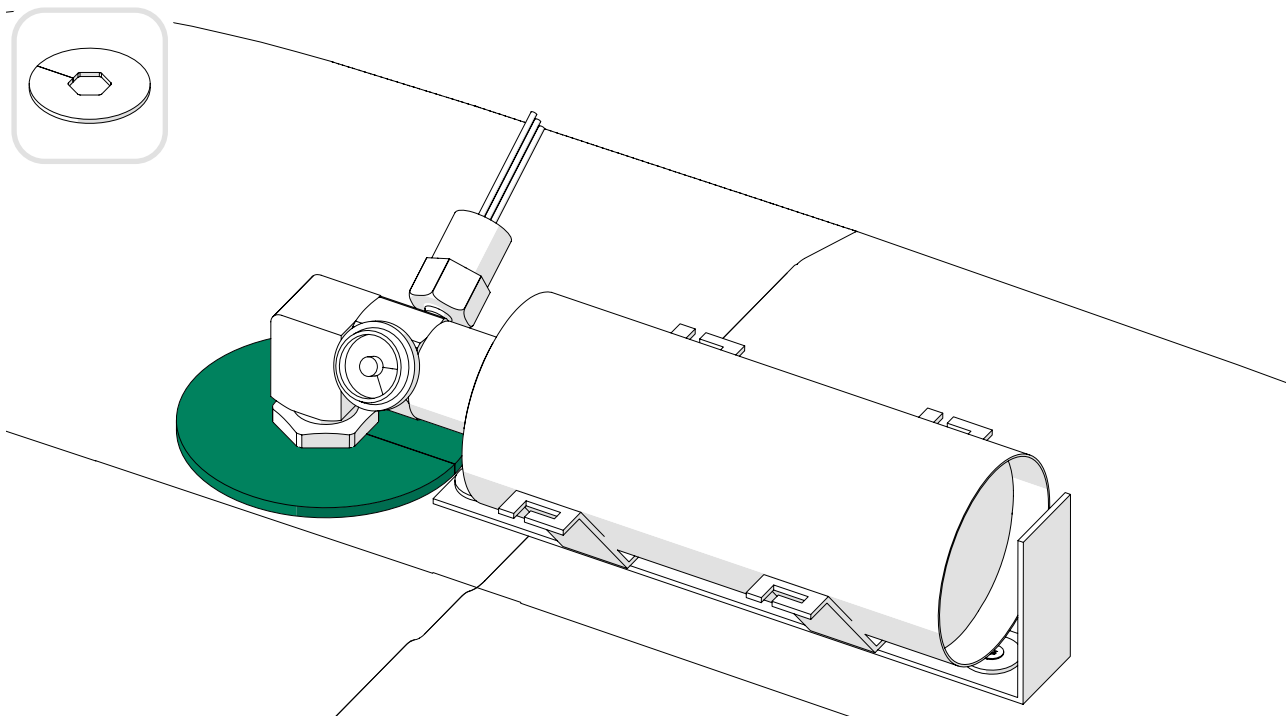
2.



3.



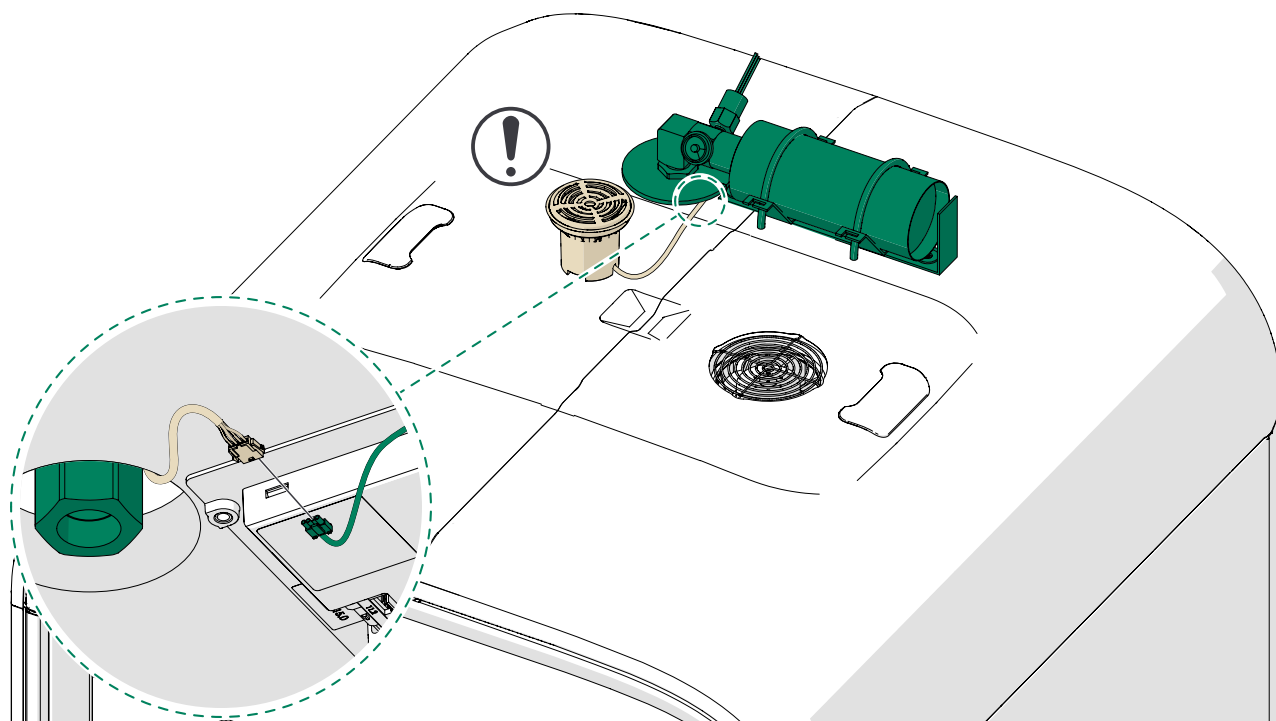
4.



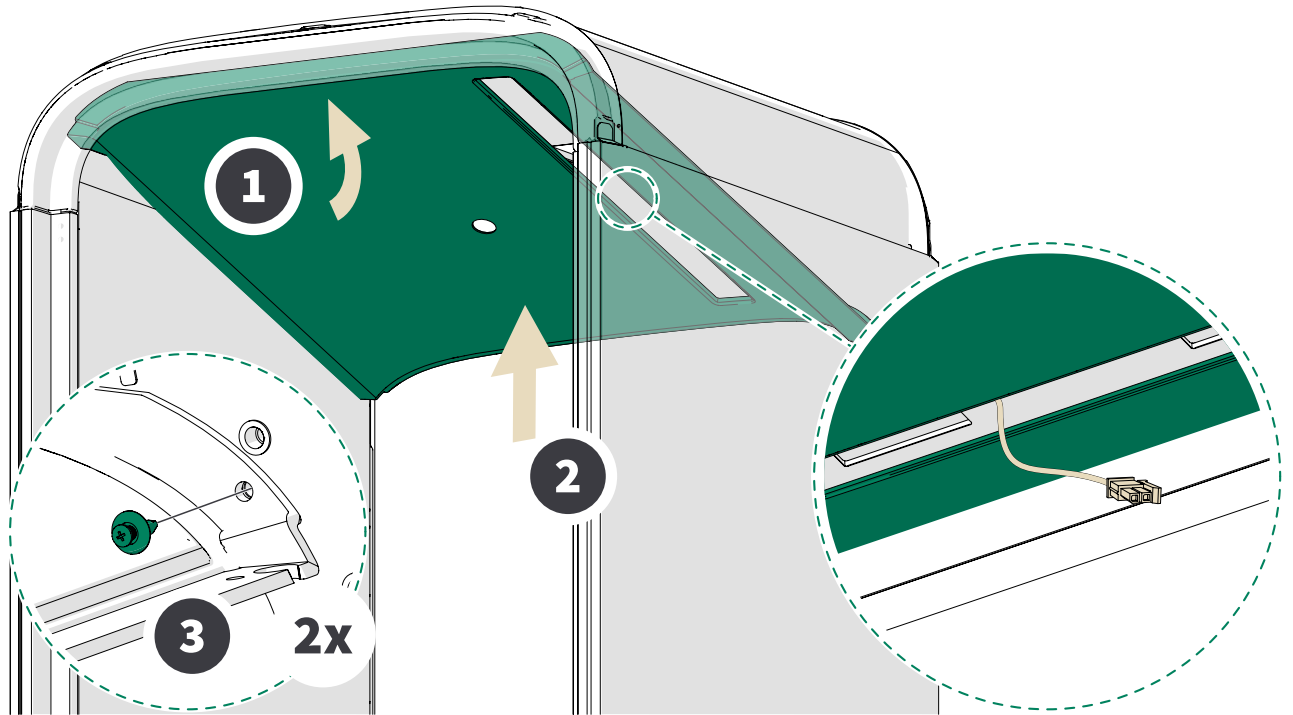
5.



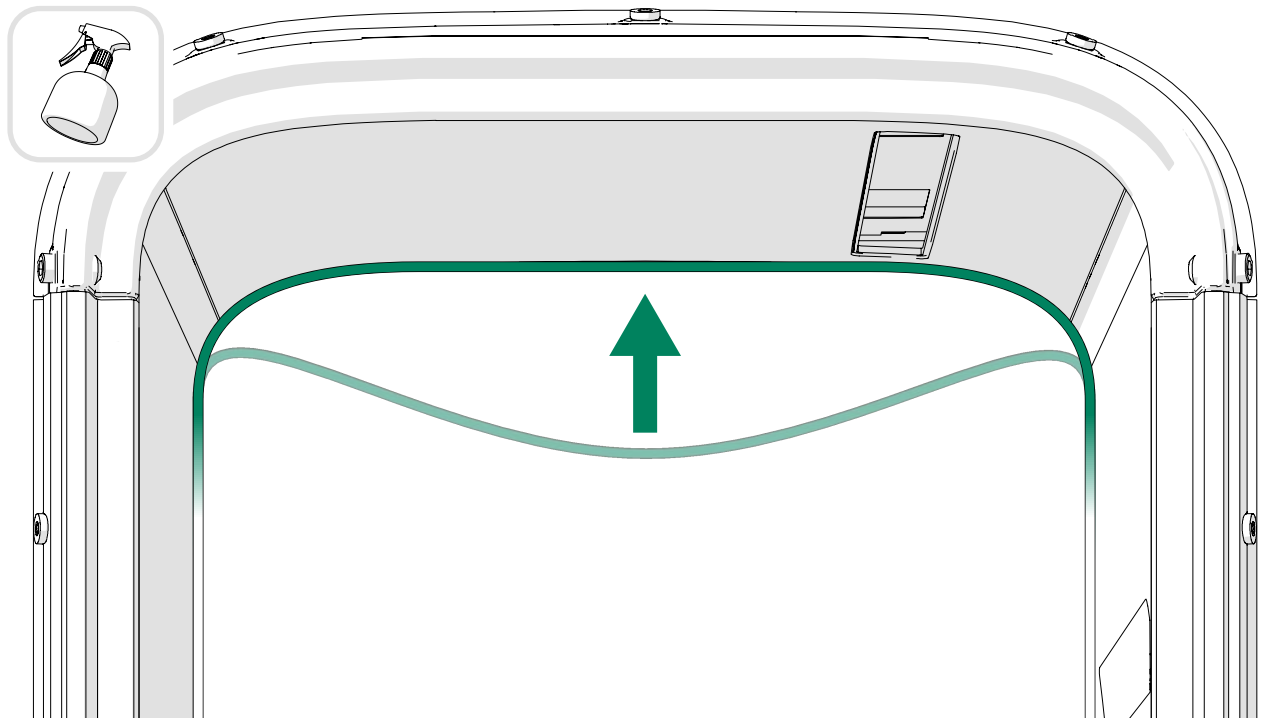
Note: You can attach the Framery Office Sound Masking System™ speaker to the roof using the built-in magnet.



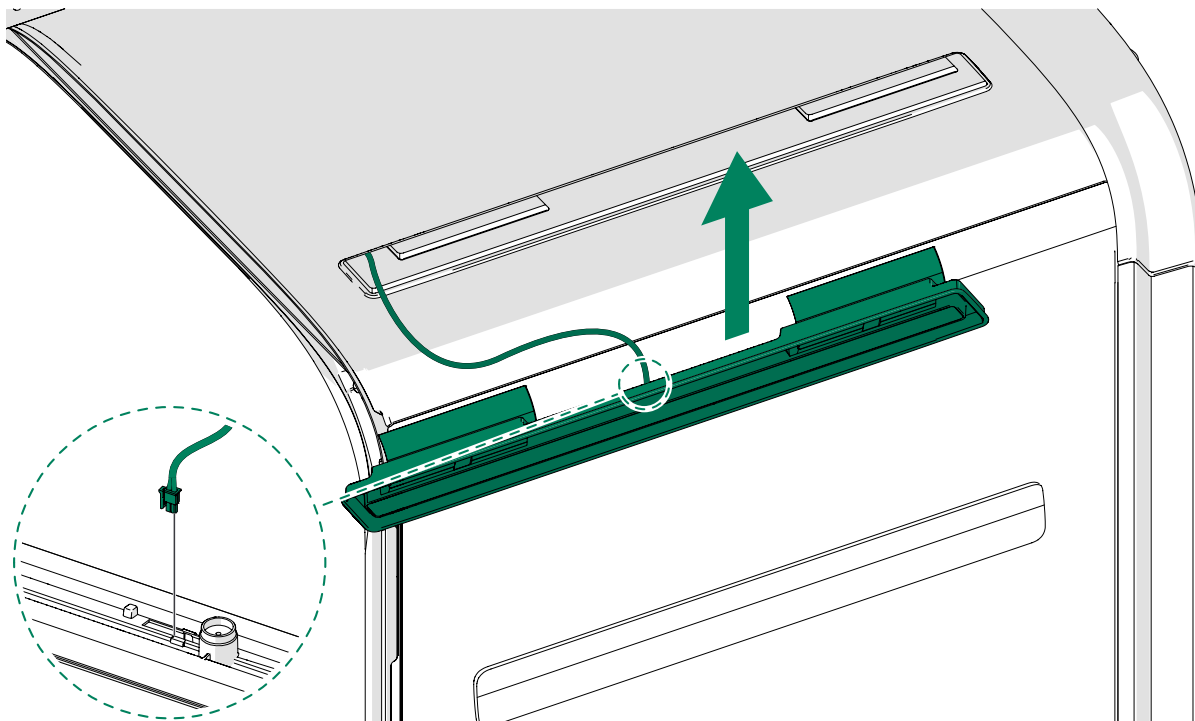
6.



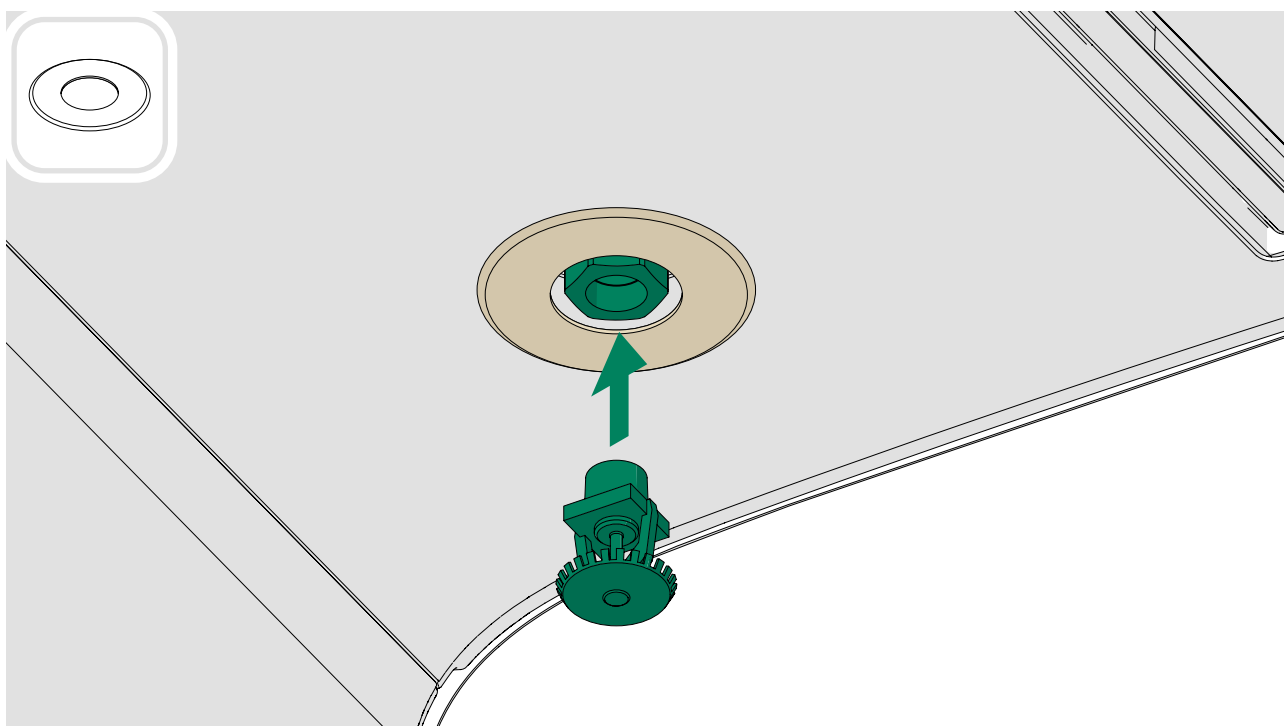
7.



8.

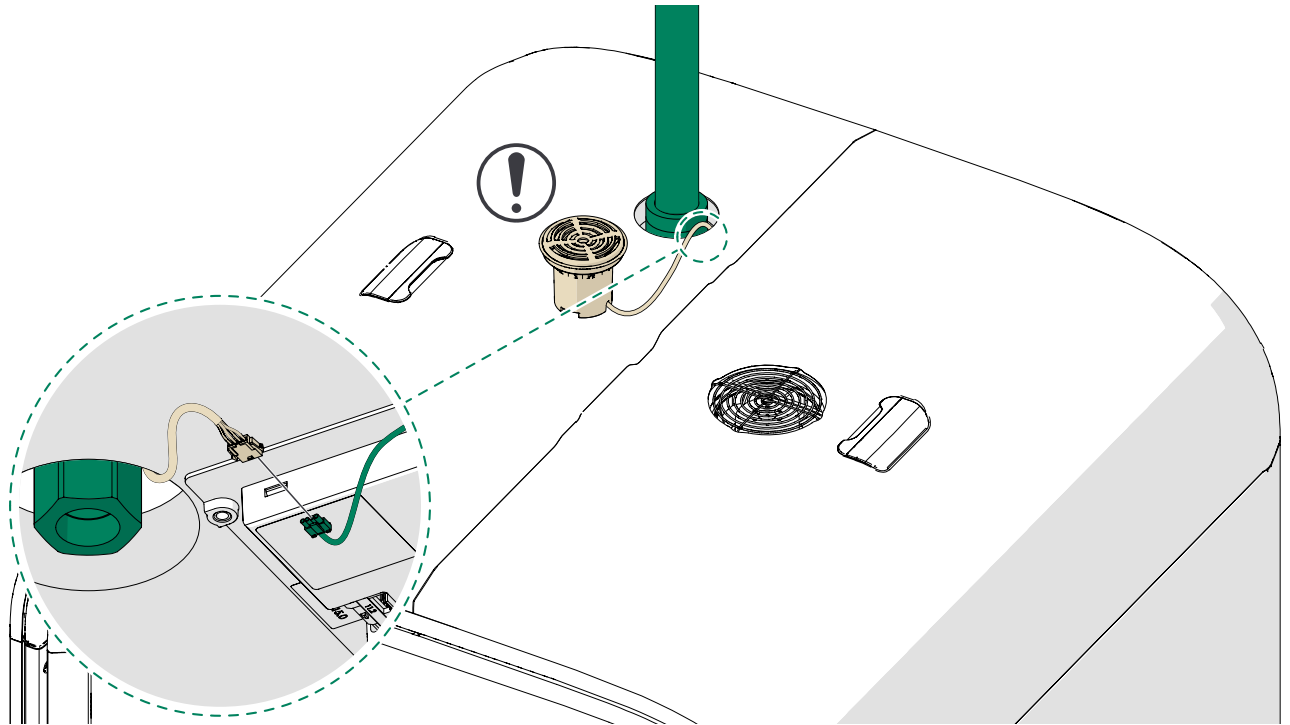


9.

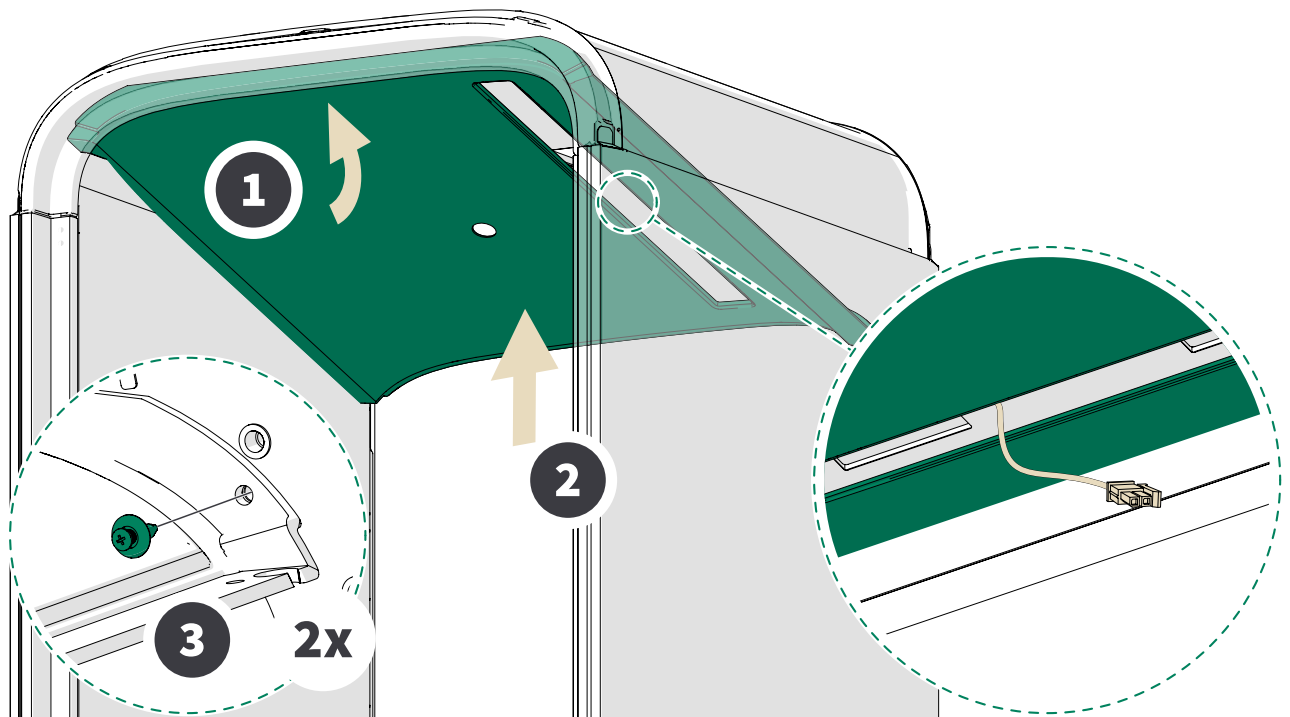


3.2 Install the sprinkler (hard pipe)

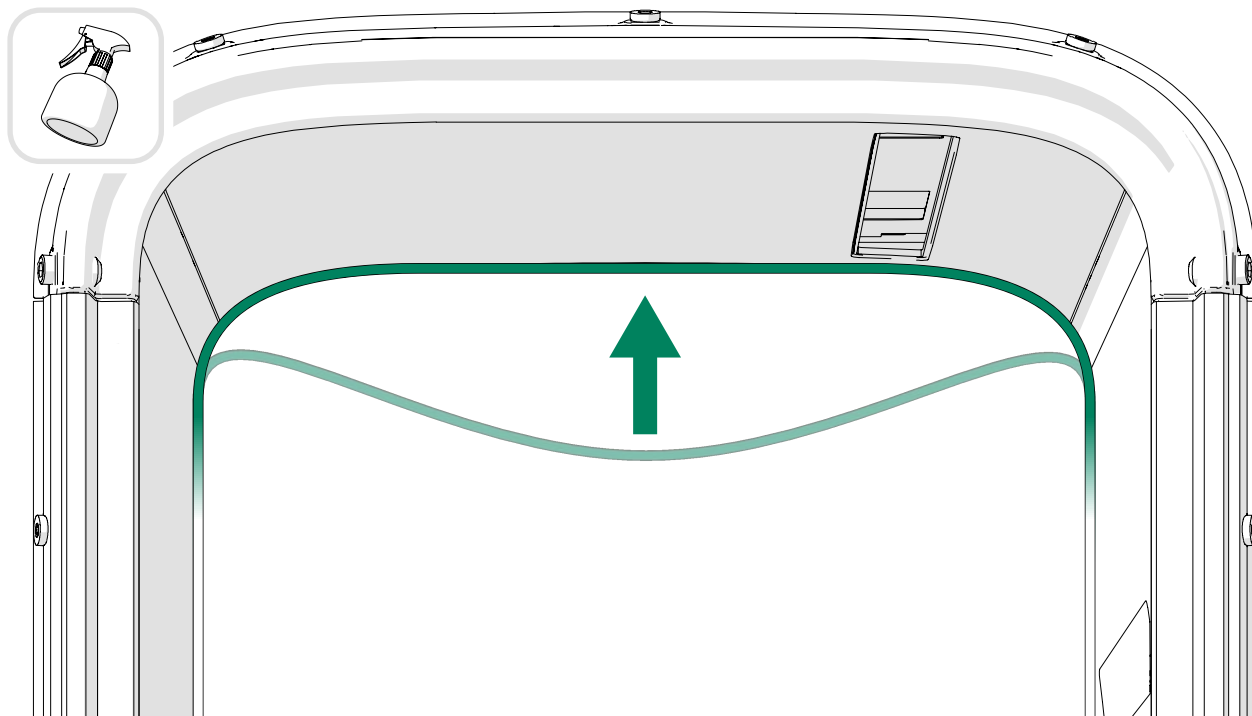
1. Bring the sprinkler hose through the roof.



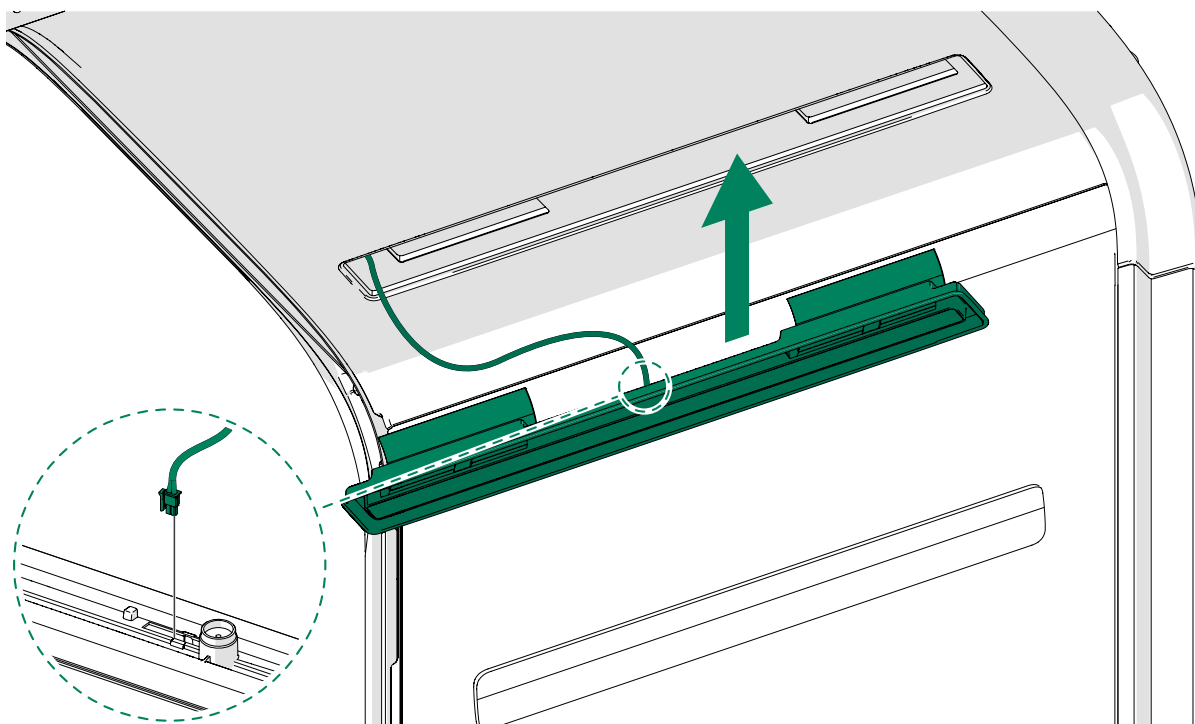
- 2.



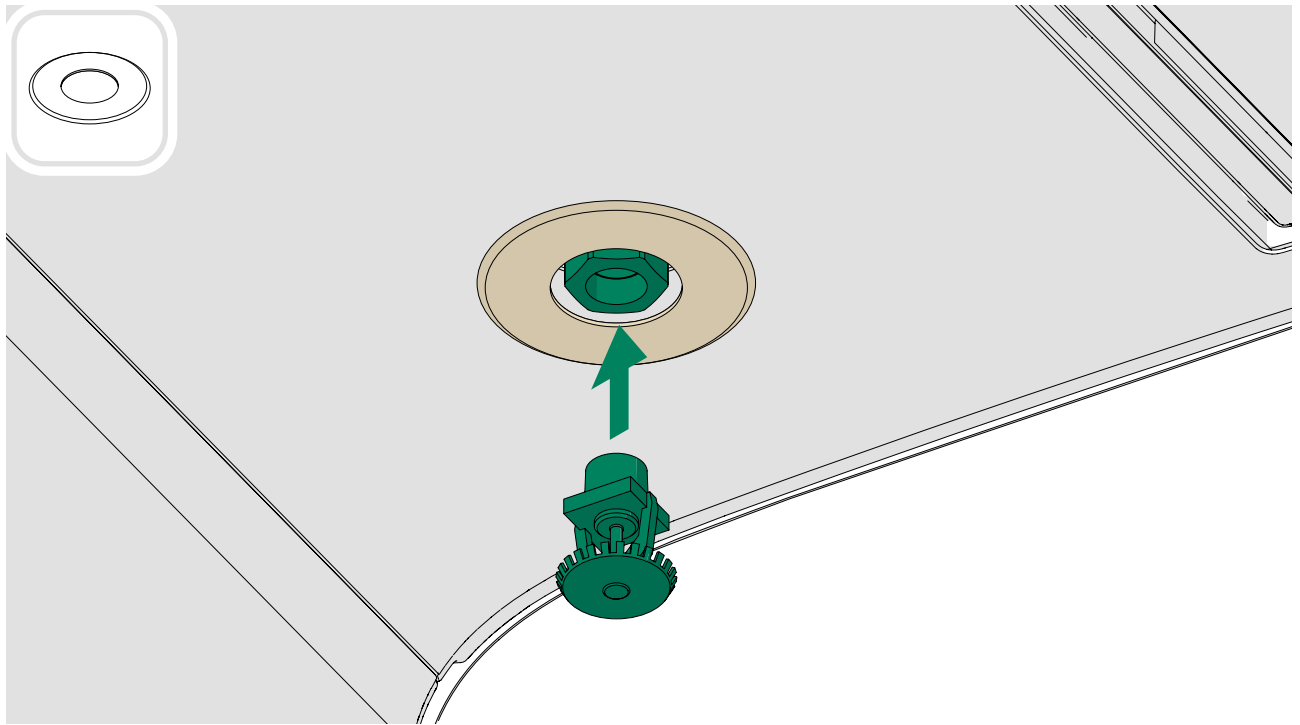
3.



4.



5. Attach the sprinkler head to the sprinkler hose inside the pod.



framery

Framery One Compact

Fire safety

Patamäenkatu 7

33900 Tampere

FINLAND

VAT: FI 23527139