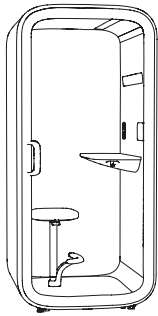


Framery One Compact

Quick Installation Guide

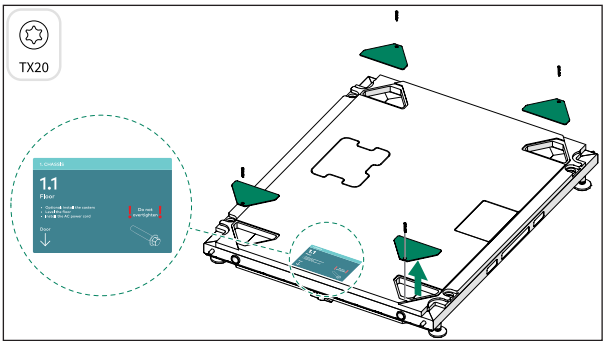
version 4



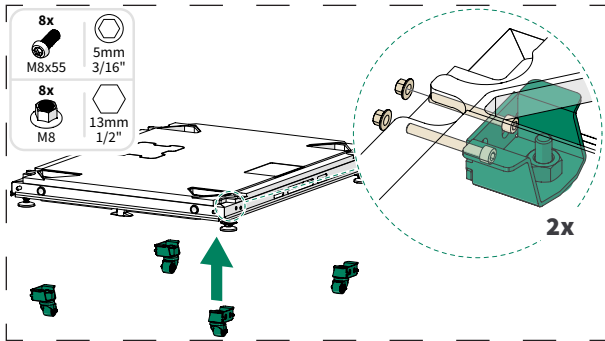
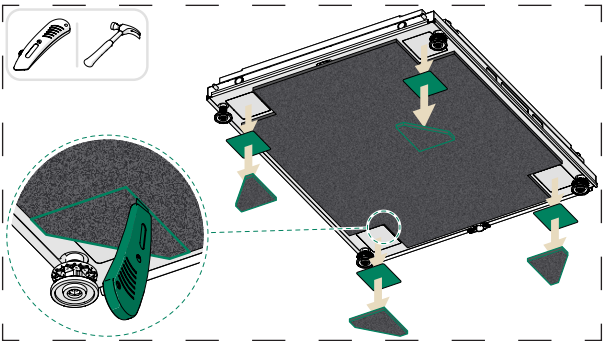
FOR MORE DETAILED
INSTALLATION INSTRUCTIONS, SEE
THE FULL INSTALLATION MANUAL
PROVIDED IN THE FASTENERS AND
ACCESSORIES 1 BOX.

1. CHASSIS

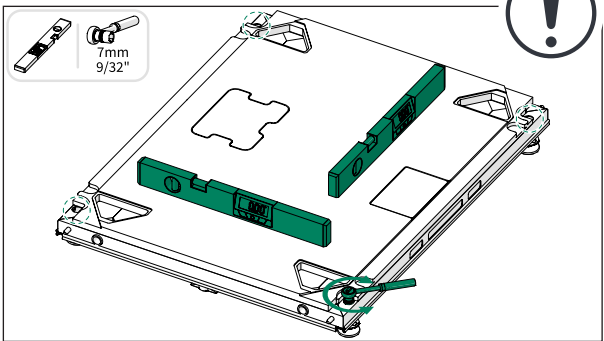
1.1 Floor



Casters, optional

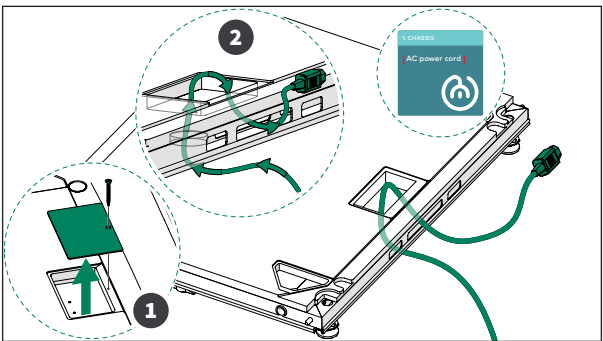


Level the floor



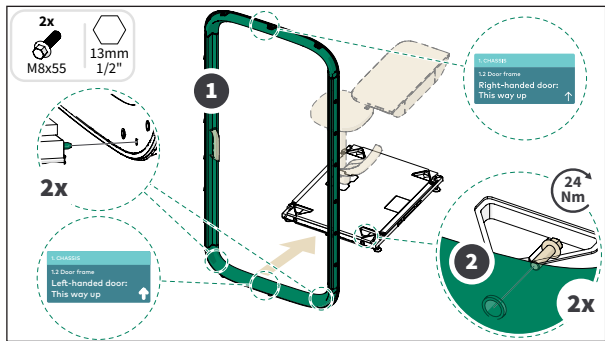
! If the floor is not leveled, the sound insulation of the pod will be improper. Level the floor and after leveling, stand on it to make sure that it is stable.

AC power cord (floor)



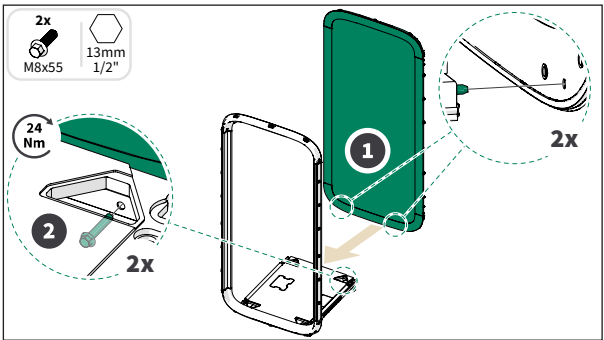
! If the power cord is routed through the roof, continue to the next phase. The power cord is installed later after connecting the electrics.

1.2 Door frame



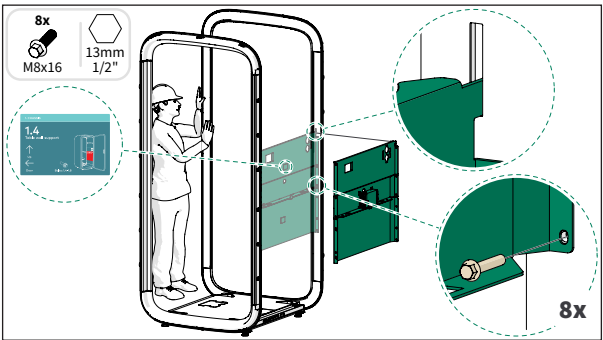
! Hold the door frame upright while another installation technician secures it to the floor module.
! The orientation of the door frame determines the door handedness.

1.3 Glass wall

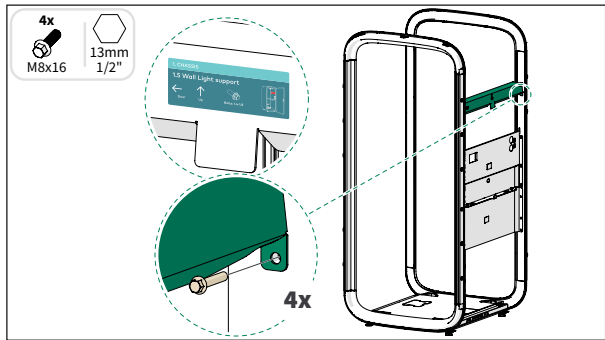


! Hold the glass wall upright until another installation technician has installed the table wall support between the frames.

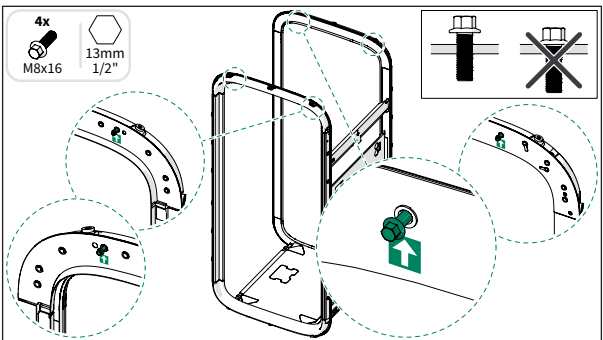
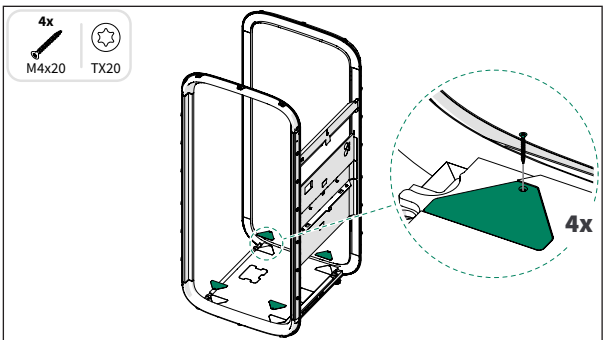
1.4 Table wall support



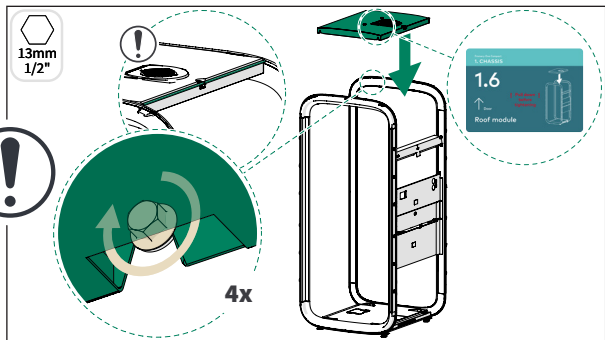
1.5 Wall light support



1.6 Roof module



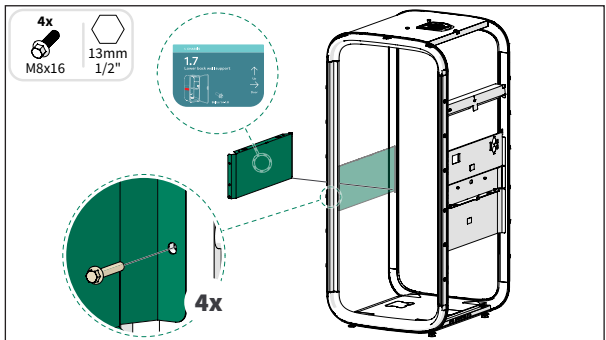
! Make sure that the fan cables or the roof module seal do not get pinned between the roof module and pod frame.



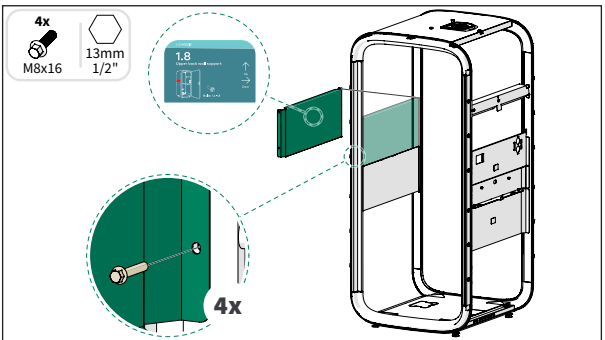
! Before tightening the screws, pull down firmly on the roof module to make sure that it is seated properly.
! Remove the blue foam from the roof module.

1. CHASSIS

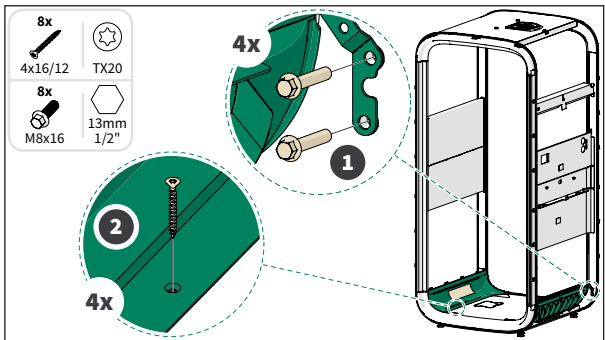
1.7 Lower back wall support



1.8 Upper back wall support

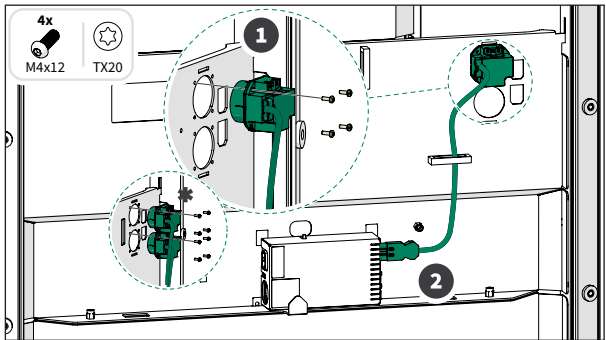


1.9 Kickboards

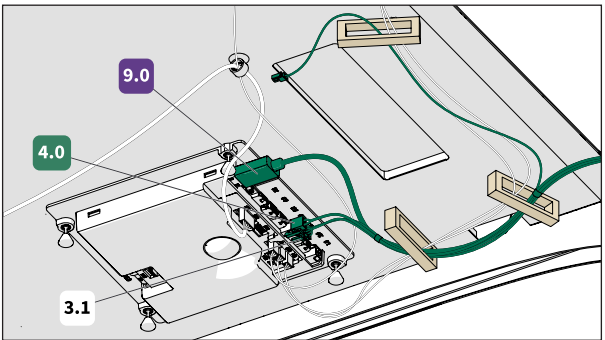


2. ELECTRICS

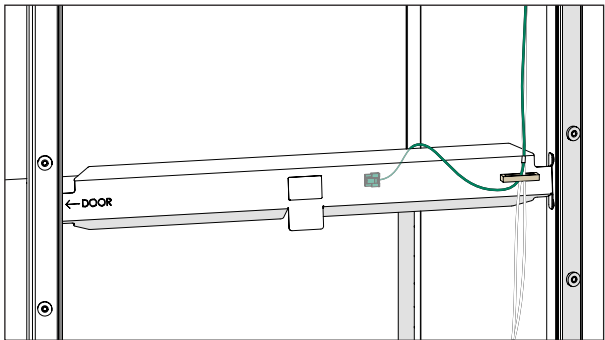
2.1 Power outlet



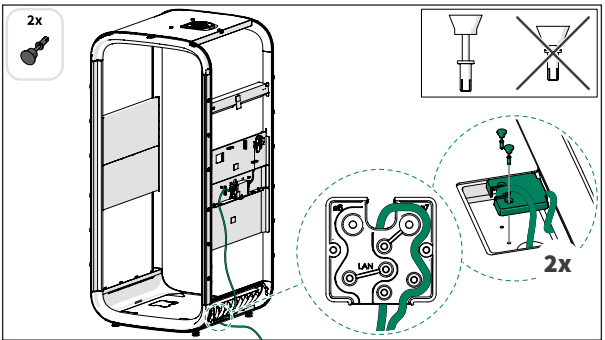
2.2 Wiring harness



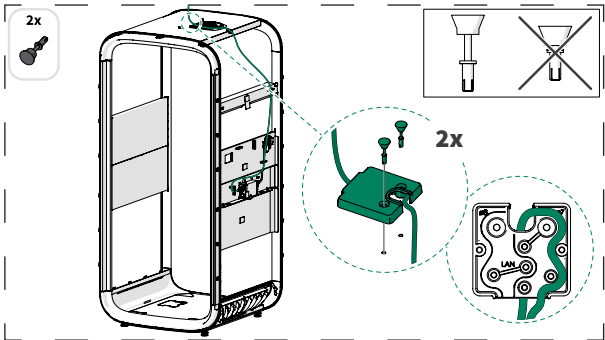
Wall light cable



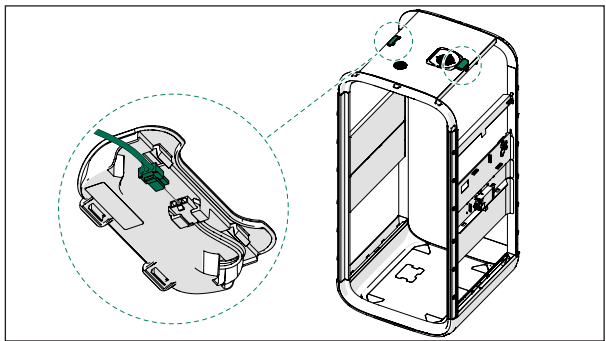
2.3 Strain relief



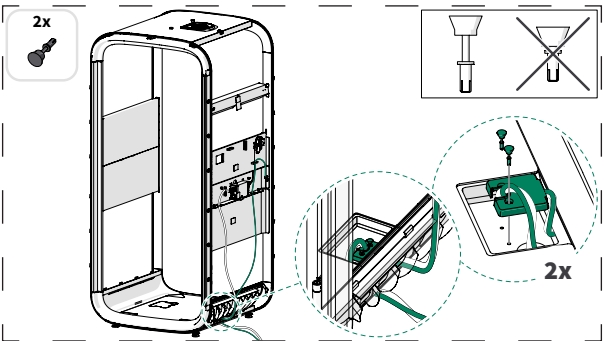
AC power cord (roof)



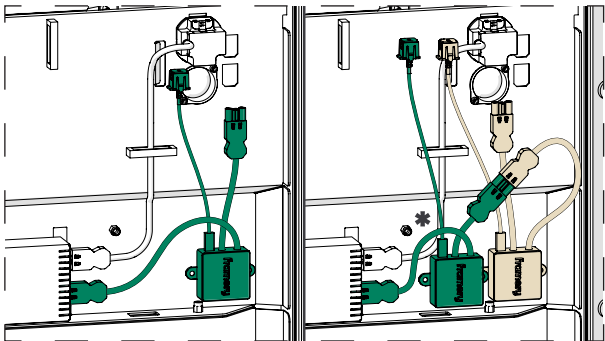
2.4 Occupancy lights



LAN, optional

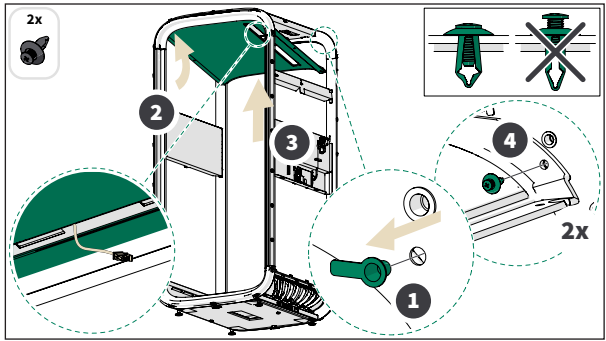


USB-C, optional

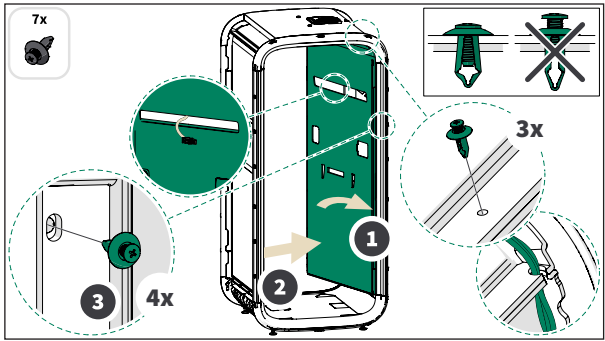
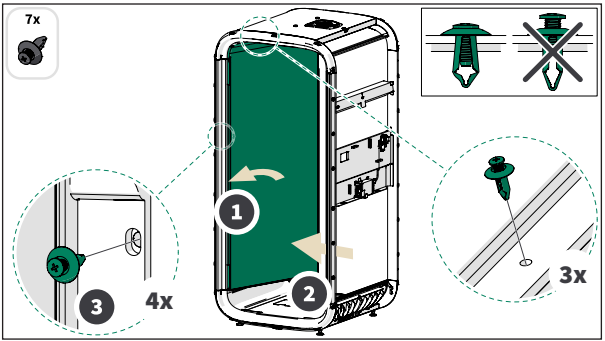


3. INTERIOR

3.1 Ceiling interior panel

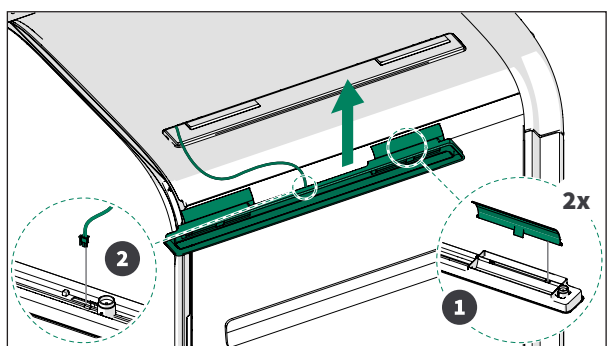


3.2 Wall interior panels

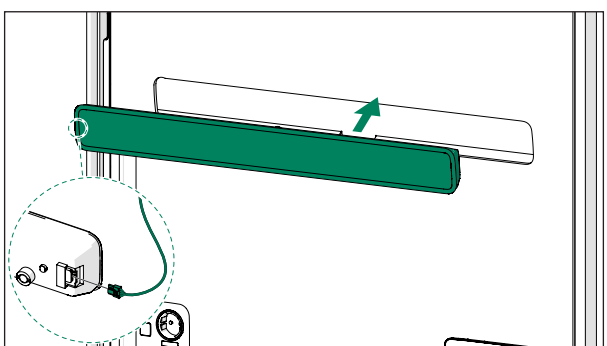


3. INTERIOR

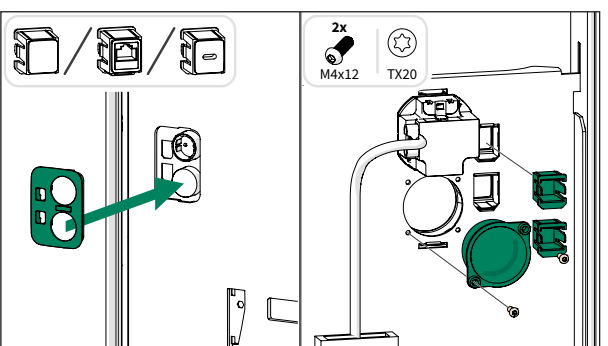
3.3 Ceiling light



3.4 Wall light

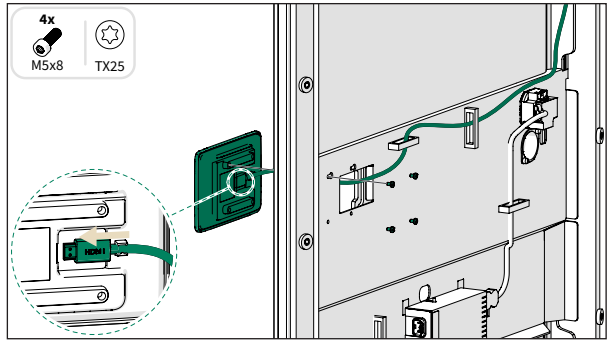


3.5 Socket covers



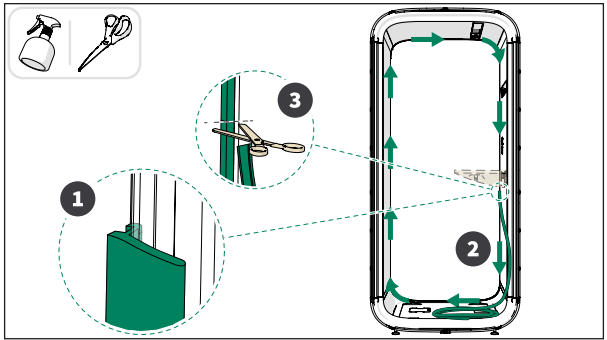
⚠ If LAN cord or USB-C module (options) are included, install the keystone connectors and connect the LAN or USB cords.

3.6 Touchscreen



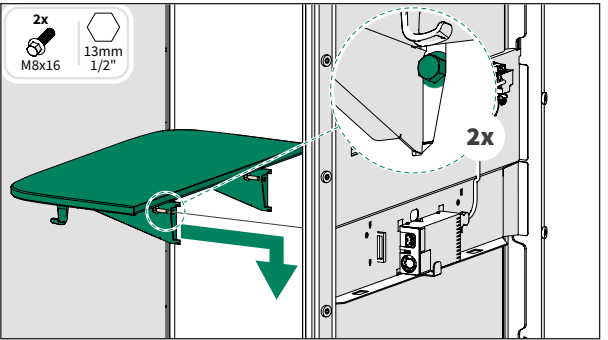
Test the electrics. Connect the power cord and verify that the touchscreen and both lights turn on. Disconnect the power cord.

3.7 Wedge gasket

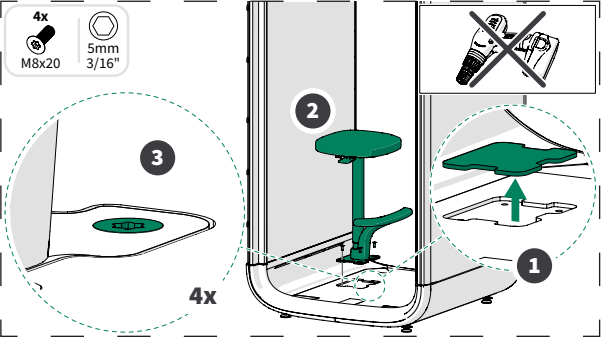
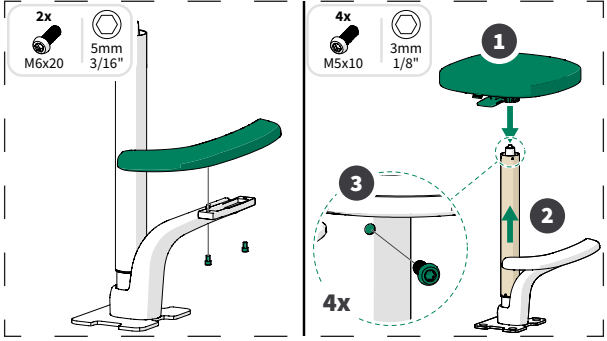
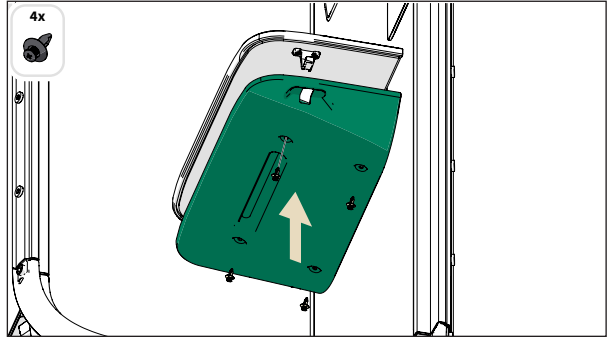


ⓘ Use glass washing liquid as a lubricant to help install the gasket.

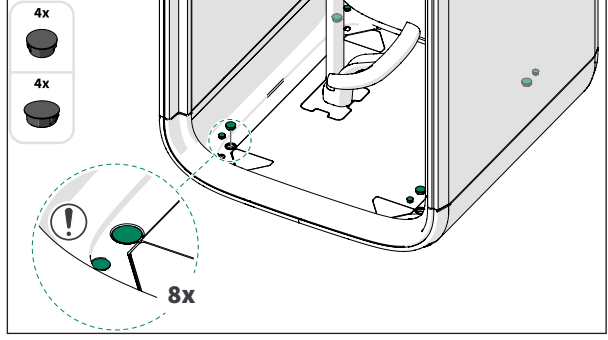
3.8 Table



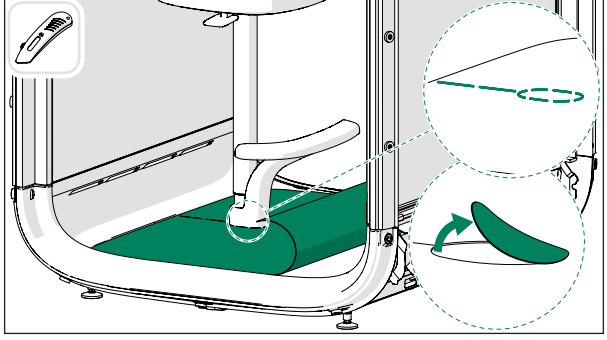
3.9 Seat, optional



3.10 Carpet



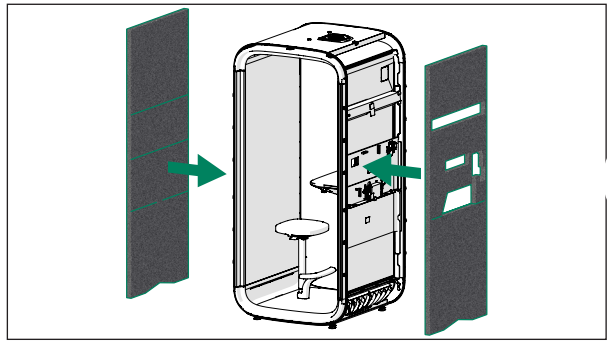
⚠ Make sure that you install the plastic plugs to the floor.



⚠ If the delivery does not include a seat, do not cut the carpet.

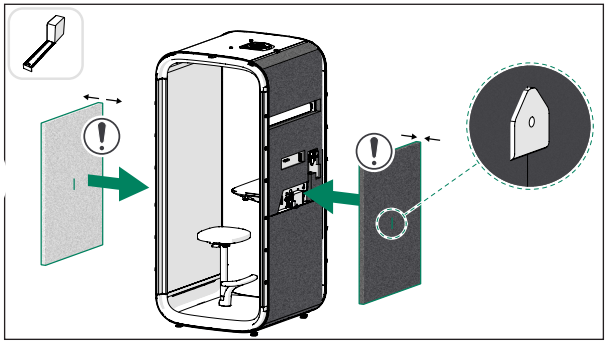
4. INSULATION & EXTERIOR

4.1 & 4.2 Acoustic panels 1



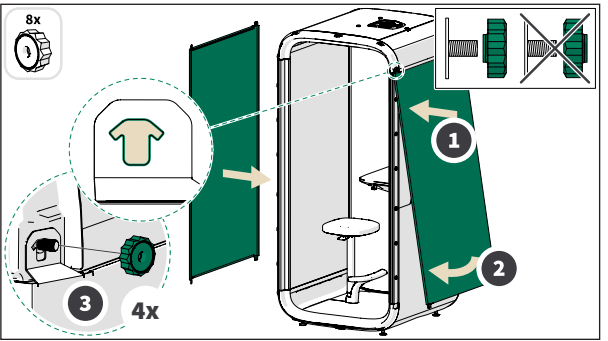
⚠ The acoustic panels are crucial for the pod soundproofing. Make sure that you install all of them (4).
⚠ Make sure that the wall light stays in place.

4.3 & 4.4 Acoustic panels 2



⚠ The thinner acoustic panel is for the table wall and thicker for the back wall.

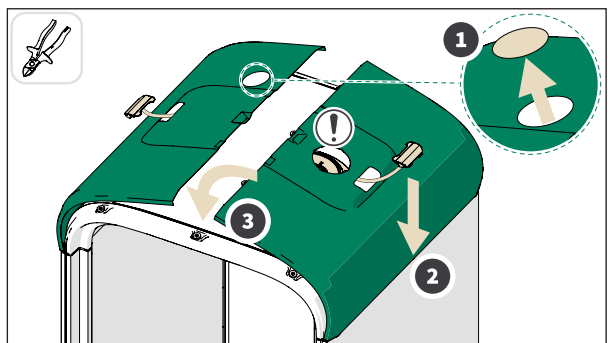
4.5 Wall exterior panels



⚠ The smooth side of the fastener must point outward.

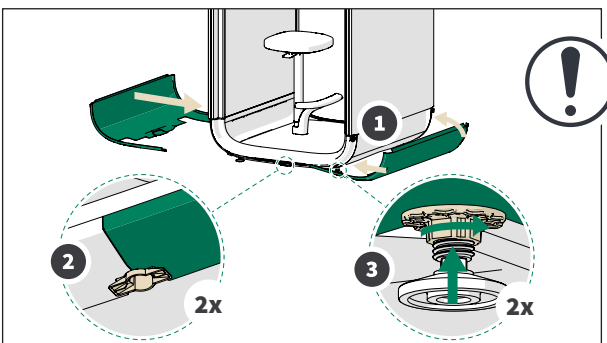
4. INSULATION & EXTERIOR

4.6 Roof exterior panels



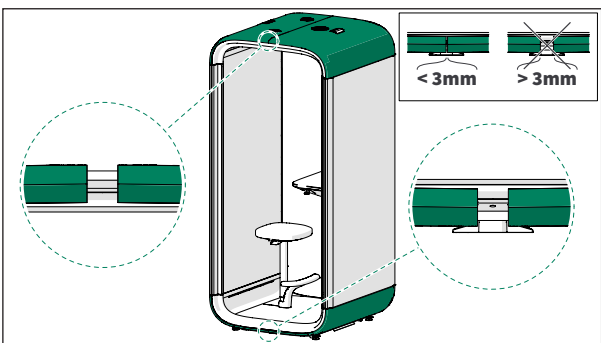
! If needed, gently tap the exterior panels to make them fit tightly.

4.7 Bottom exterior panels



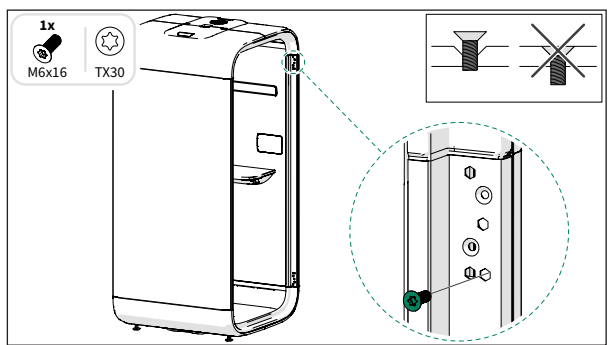
! Tighten the nuts just lightly.

Check the panel alignment

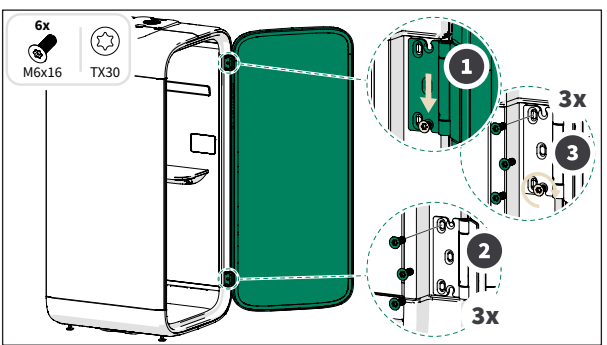


5. DOOR

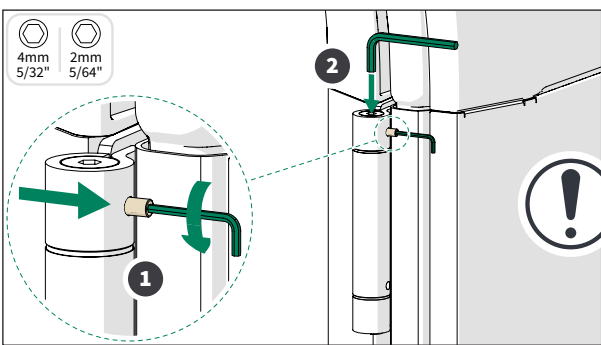
5.1 Door



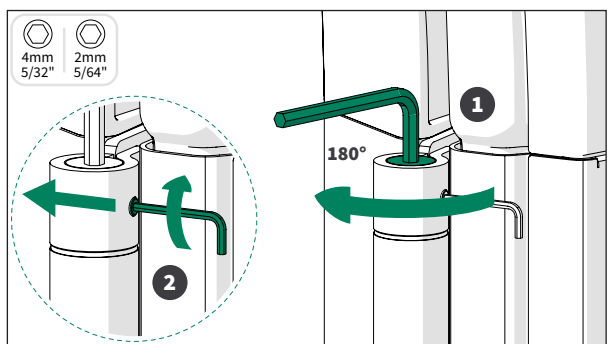
! Install the positioning screw first.
! Do not lift the door from the handle when unpacking it.



Adjust the closing speed



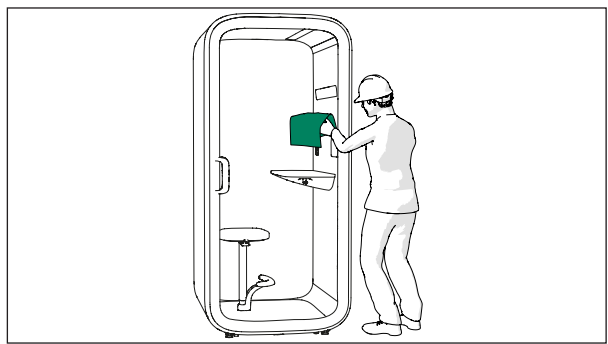
! Adjust both hinges to the same setting.



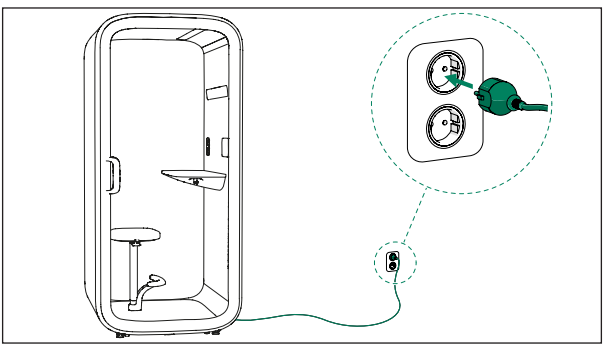
! With a left-handed door, turn counter-clockwise.

Finalize the installation

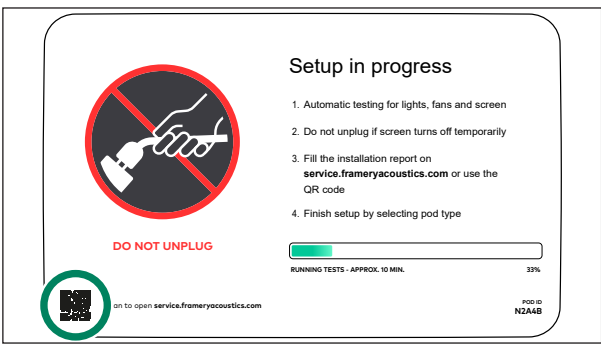
Clean the pod



Connect the power cord



Create an installation report



Scan the QR code on the touchscreen to open the installation report.